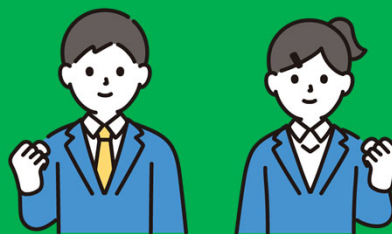




Important Notice



Financial Support for High School Students

Grants for Supplemental Scholarships

High School Supplemental Scholarship Fund

Provision of support for educational costs other than tuition including textbooks, educational materials costs, etc.)

The scholarship does not have to be paid back

Household conditions

- Households on welfare
- Households exempt from paying inhabitant tax (per income basis)
- ※ **Households determined exempt from tax due to a sudden change in household income** are also eligible.

Application process

- In order to receive assistance from supplemental scholarship funds, you are required to apply through the school, or the municipal office of your parent/guardian's residence.
- Sometime between April and June, **newly enrolled students** will be able to apply to receive a **partial early payment of the grant**.
- ※ Note that you must apply to receive assistance from supplemental scholarship funds, separately from the High School Tuition Support Fund.
- ※ The implementation conditions of the supplemental scholarship system will vary depending on the prefecture.

Grant Amount for FY2025

| Household conditions | Grant amount (annual amount) | |
|--|------------------------------|----------------|
| | National, public school | Private school |
| Households on welfare 【full-time, part-time, correspondence courses】 | 32,300 yen | 52,600 yen |
| Households exempt from tax 【full-time, part-time courses】 | 143,700 yen | 152,000 yen |
| Households exempt from tax 【correspondence, advanced courses】 | 50,500 yen | 52,100 yen |

For households exempt from tax, the first-born child and the second-born child will each receive the **same grant amount**.



※ For households with a sudden change in income, the grant amount will change according to which month your application is submitted.

Please contact your school or your local prefectural office for any questions on the grant program.

Contact numbers are available via the following link on the MEXT website
http://www.mext.go.jp/a_menu/shotou/mushouka/detail/1353842.htm

