

Regional Innovation Strategy Promoting Regions

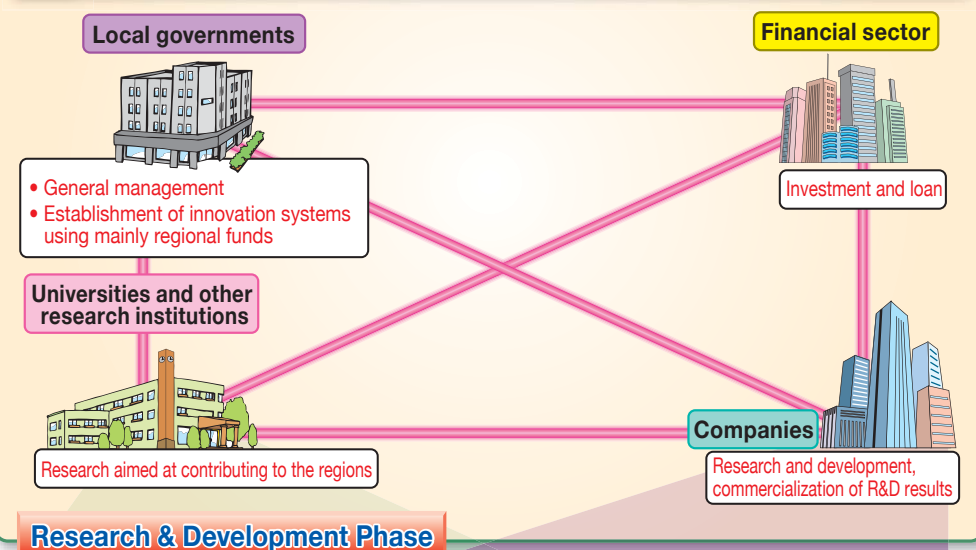
In Fiscal 2011, the Ministry of Education, Culture, Sports, Science and Technology (MEXT), the Ministry of Economy, Trade and Industry (METI) and the Ministry of Agriculture, Forestry and Fisheries (MAFF) jointly selected regions with excellent original visions toward the creation of regional innovations and designate them as "regional innovation strategy promoting regions." The Innovation Promotion Council (composing members: local governments, business groups, universities and other research organizations, financial institutions, etc.) was established in the regions to promote the creation of regional innovations from a long-term perspective. This council is responsible for managing activities in regions that have established regional innovation strategies and are proactively carrying out projects as either "regions focused on strengthening international competitiveness" or "regions focused on advancement of research function/industrial concentration".

Among the selected regions, those with especially outstanding strategies will receive seamless support for all activities ranging from fundamental research conducted by universities to commercialization of research results by companies. All pertinent policies of relevant ministries will be utilized to provide full-fledged support to help the regions realize their regional innovation strategies comprehensively and efficiently.

This will establish systems that allow industry, academia, government and the financial sector to collaborate and create self-sustainable and expansive innovations by maximizing regional characteristics. This systems will revitalize local communities, and it is also expected to achieve further advancement and diversification of science and technology in Japan as well as enhancement of the international competitiveness of Japan's industry.

Innovation Promotion Council

- Function**
- To establish "regional innovation strategies" for the creation of new regional innovations and to implement self-sustainable activities toward the realization



Research & Development Phase

Fundamental research → Research & development → Industrialization

Support from the national government

MEXT

Role: Provision of support for the formation of intellectual assets and for the development of human resources

METI, MAFF, etc.

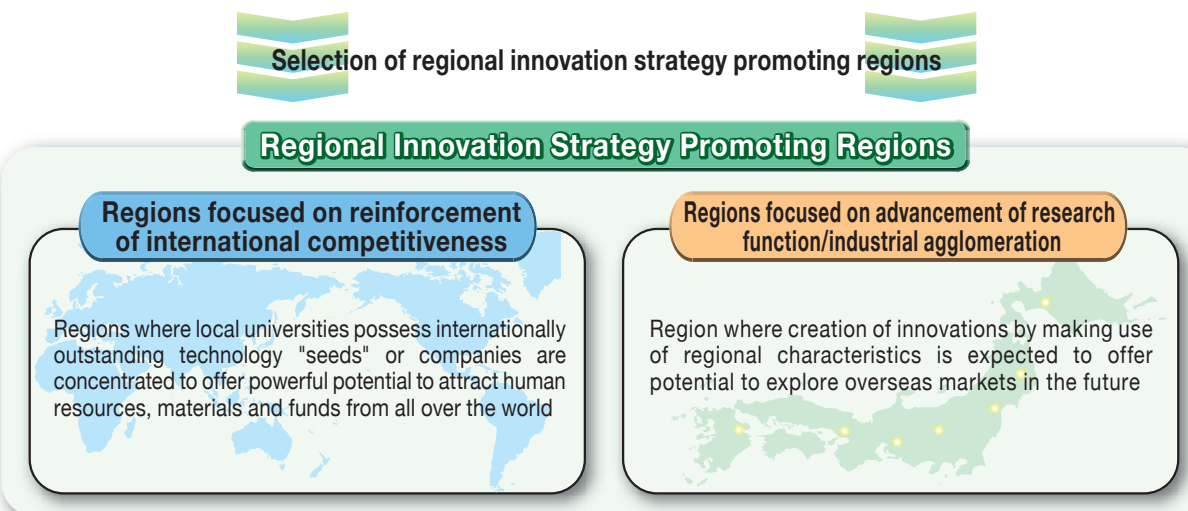
Role: Provision of support for the commercialization of research results, development of sales channels, etc.

For effective use of limited resources, the share of roles is clearly defined, and support is provided to augment inadequate local functions.

Continuous Creation of Innovations to Realize Self-sustainable Regions

Flow of Processes of Receiving Support from Relevant Ministries

Regions with self-sustainable and excellent visions toward the creation of regional innovations



Among the selected regional innovation strategy promoting regions, those with superb visions receive the following support.

Support Programs Offered by Ministries

MEXT's support Programs

- Regional Innovation Strategy Support Program (see pages 5 and 6)
- Concentration of researchers who play core roles in regional innovation strategies
 - Development and implementation of human resource development programs for realizing regional innovation strategies
 - Establishment of knowledge networks of universities and other research institutions
 - Support for sharing of research facilities and equipment among local universities and other research institutions

METI's support Programs

- The business to strengthen a local industry competitive power
 - Subsidy for the promotion of establishment of growth industries, etc.
 - Support projects for strengthening research and development capabilities of the private sector and for promoting practical application of R&D results
 - Subsidy for the Development of Growth Industries and Promotion of Establishment of New Business Facilities, etc.
 - The Innovation Center Establishment Assistance Program
- * Regional innovation strategies are taken into consideration during the adoption of projects.

MAFF's support Programs

- Research and development projects for application in promoting new policy of agriculture, forestry and fisheries
- * Regional innovation strategies are taken into consideration during the adoption of projects.