

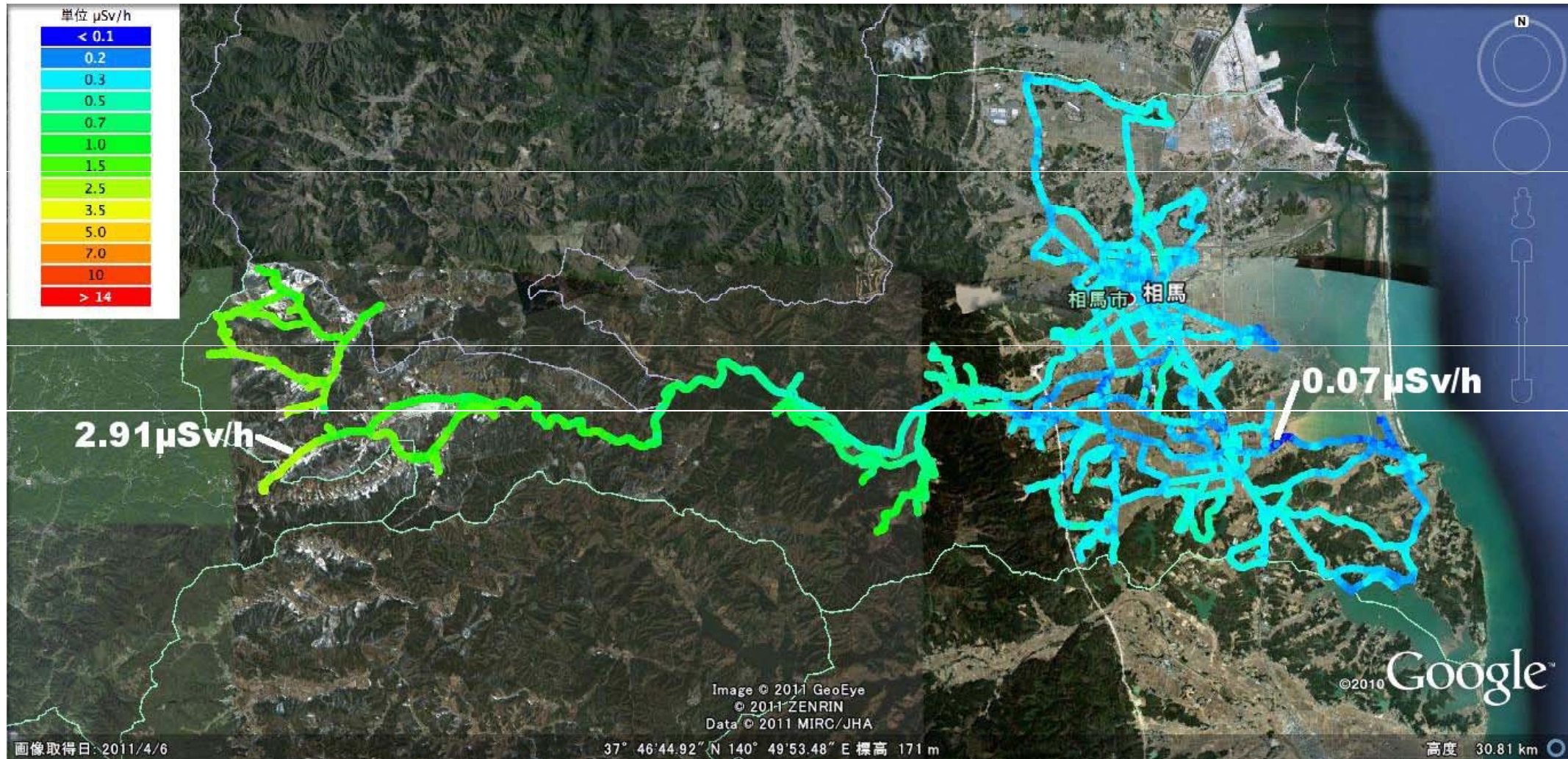
# Readings of Vehicle-Borne Monitoring in Soma City

July 19. 2011

Nuclear Emergency Response Headquarters (Radioactivity Team)  
Disaster Provision Main Office of Fukushima Pref. (Nuclear Power Team)

- 1 Monitoring Time: July 9, 2011
- 2 Monitoring Point: Tamano in Soma city, Higashitamano, Yamakami, Nitsukeshi etc, .
- 3 Monitoring method: Measure air dose rates by driving four vehicles within the target area
- 4 Result of a measurement  
The maximum : 2.91  $\mu$  Sv/h (Tamano : North latitude 37.76493 East longitude 140.7061)  
The minimum : 0.07  $\mu$  Sv/h (Nitsukeshi : North latitude 37.76745 East longitude 140.9581)

- All Routes and Dose Rates



# 《 日常生活と放射線 》



※ Sv【シーベルト】=放射線の種類による生物効果の定数(※) × Gy【グレイ】

※ X線、γ線では 1

# Radiation in Daily-life

※Unit :  $\mu\text{Sv}$



※  $\text{Sv}$  [Sievert] = Constant of organism effect by kind of radiation (※)  $\times$  Gy [gray]

※ It is 1 in case of X ray and  $\gamma$  ray.