

Readings of Vehicle-Borne Monitoring in Motomiya City

July 19, 2011

Nuclear Emergency Response Headquarters (Radioactivity Team)

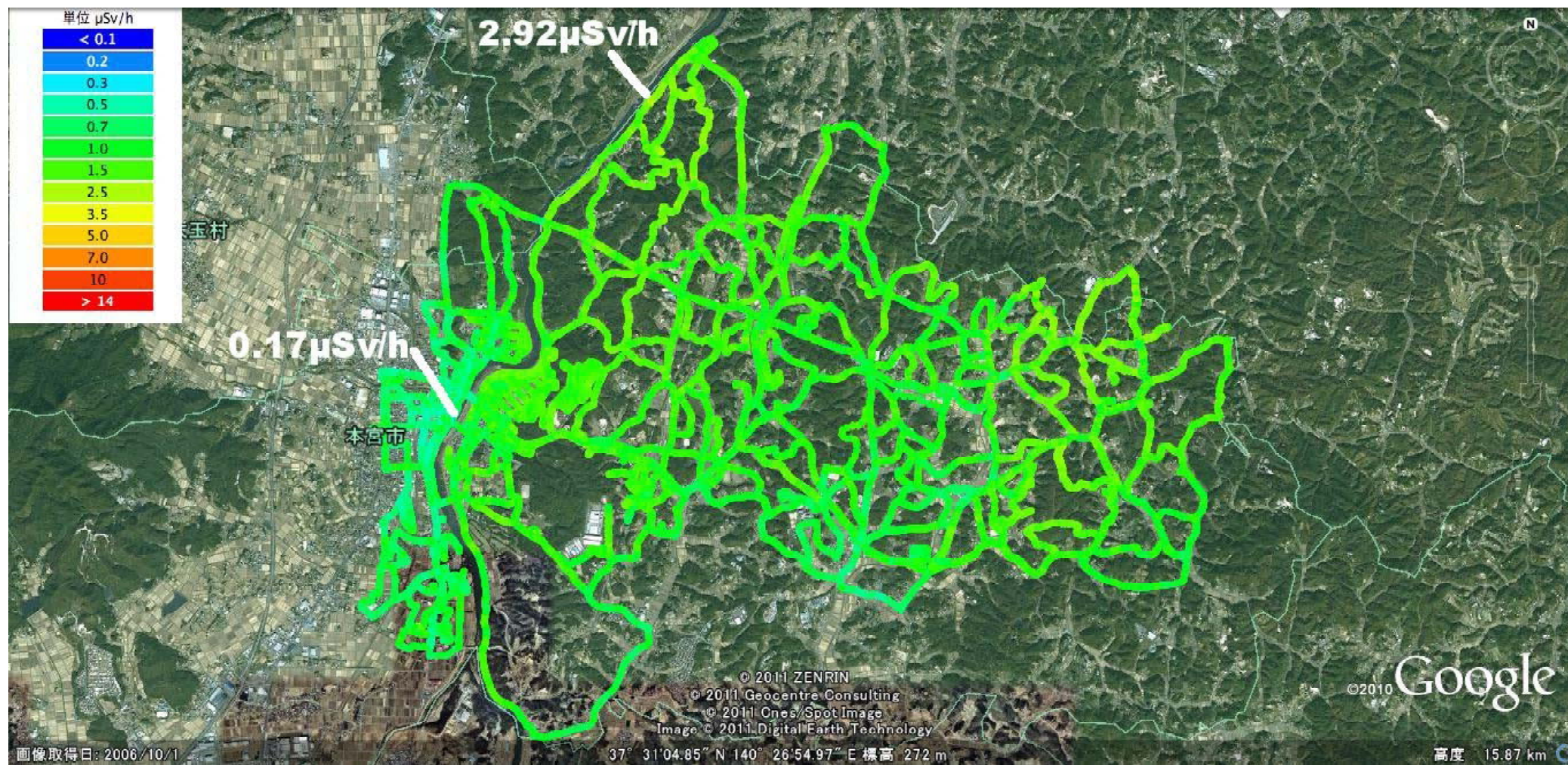
Disaster Provision Main Office of Fukushima Pref. (Nuclear Power Team)

- 1 Monitoring Time: July 13, 2011
- 2 Monitoring Point: Motomiya in Motomiya City、 Niita、 Wada、 Takagi、 Nagaya etc.,.
- 3 Monitoring method: Measure air dose rates by driving five vehicles within the target area
- 4 Results of a measurement

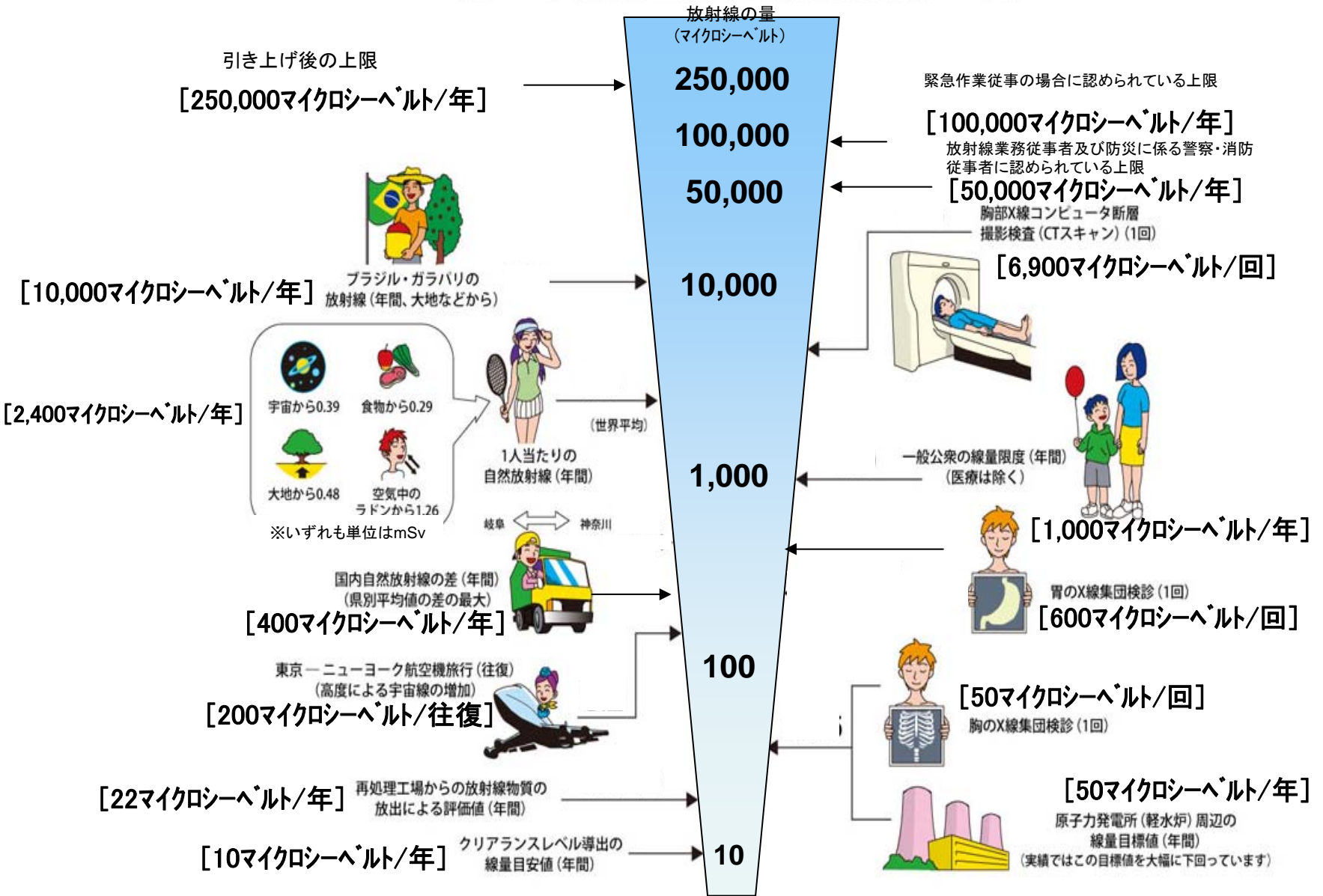
The maximum : $2.92 \mu\text{ Sv/h}$ (Wada : North Latitude 37.5478 East Longitude 140.4299)

The minimum : $0.17 \mu\text{ Sv/h}$ (Motomiya : North Latitude 37.5149 East Longitude 140.4037)

- All Routes and Dose Rates



《 日常生活と放射線 》

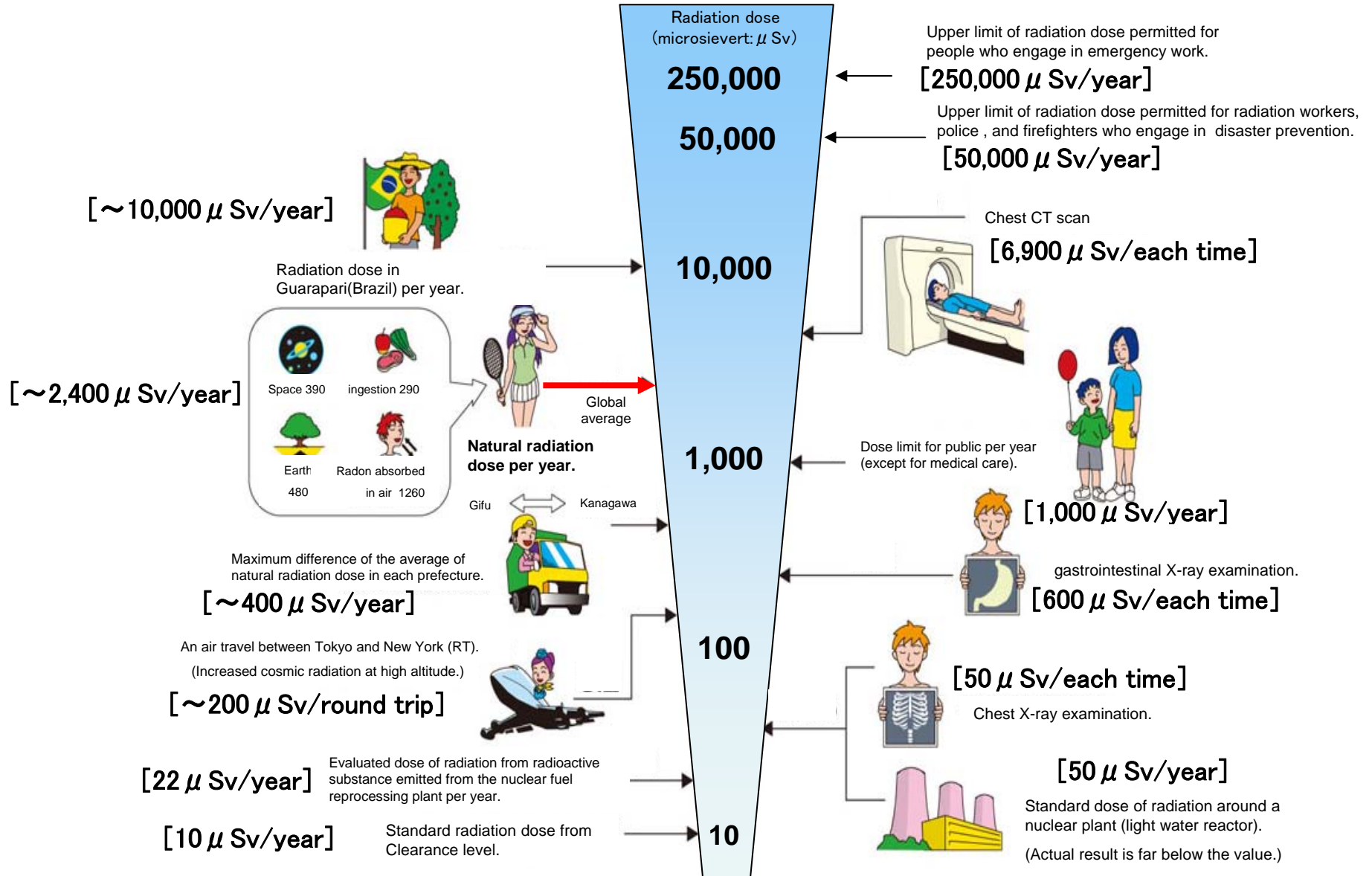


※ Sv【シーベルト】=放射線の種類による生物効果の定数(※) × Gy【グレイ】

※ X線、γ線では 1

Radiation in Daily-life

※Unit : μSv



※ Sv [Sievert] = Constant of organism effect by kind of radiation (※) × Gy [gray]

※ It is 1 in case of X ray and γ ray.