

**Readings by Monitoring Car in Iwaki City
(Kawamae District)
(Preliminary Report)**

June 30, 2011

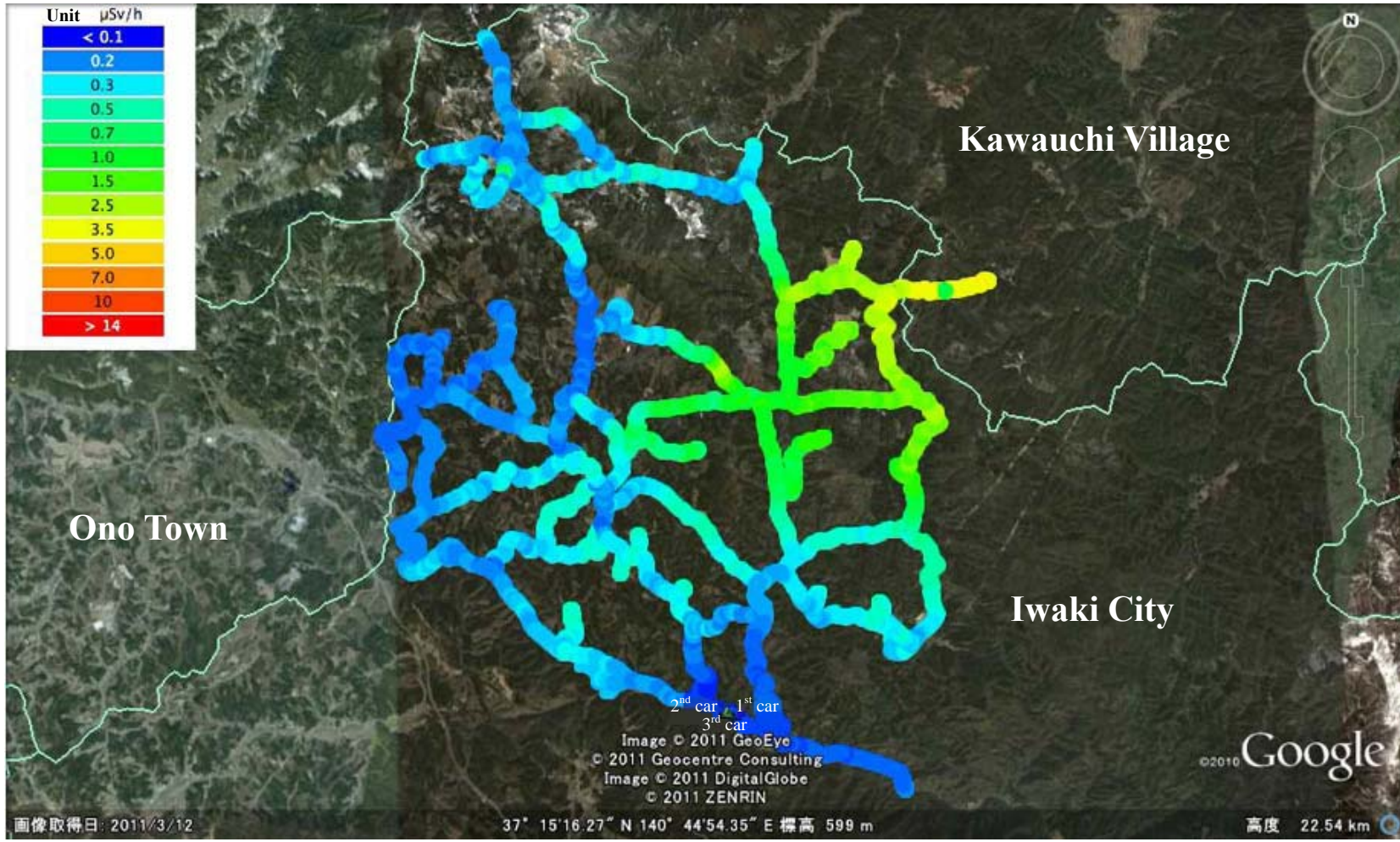
Nuclear Emergency Response Headquarters (Radioactivity Team)
Disaster Provision Main Office of Fukushima Pref. (Nuclear Power Team)

- 1 Date: 11:00 to 15:00 on June 29, 2011
- 2 Target: Kawamae District, Iwaki City
- 3 Method: Run three cars within the target area to measure air dose rates

4 Monitoring results

Routes and the distribution of dose rates are as shown in the figure below. The maximum value was $2.81 \mu\text{ Sv/h}$ and the minimum value was $0.06 \mu\text{ Sv/h}$ within the target area (within Iwaki City).

At a location outside the target area (Kawauchi Village), a relative high value of $4.38 \mu\text{ Sv/h}$ was measured.



Monitoring Points Showing High Dose Rates

