

Readings of Environmental Radiation Level in emergency monitoring (Group 1) (3/25)

2011/3/25		Measurement (μ Sv/h)								
Sampling Points (Fukushima Kawamata Iitate Minamisoma Shinchi)	Measurement Time	Fukushima	Kawamata	Iitate	Minamisoma	Shinchi	Shinchi	Iitate	Kawamata	Fukushima
		Readings	Readings (Outside the car)	Notes	Measurement Time	Readings	Readings (Outside the car)	Notes		
1	Fukushima(Fukushima Branch)	10:35	0.9			Cloudy	19:46	0.7		
2	Fukushima									
3	Fukushima	10:40	1.9				19:41	1.6		
4	Fukushima	10:41	1.8				19:39	1.7		
5	Fukushima	10:44	2.4				19:37	2.1		
6	Fukushima	10:46	2.4				19:35	2.0		
7	Fukushima	10:46	2.5				19:35	2.4		
8	Fukushima	10:50	2.9				19:33	2.7		
9	Fukushima	10:52	6.7				19:31	4.7		
10	Fukushima	10:54	4.5	1m 4.98 Ground Level 6.68			19:26	3.6	1m 4.25 Ground Level 4.77	
11	Fukushima	11:03	2.7				19:20	2.3		
12	Fukushima	11:06	2.3				19:17	2.0		
13	Kawamata	11:09	2.2				19:13	2.2		
14	Kawamata	11:11	1.4				19:11	1.4		
15	Kawamata	11:14	1.6				19:08	1.6		
16	Kawamata	11:17	2.0				19:05	2.2		
17	Kawamata									
18	Kawamata	11:20	2.0				19:02	1.5		
19	Kawamata	11:21	2.2	1m 2.60 Ground Level 3.48		Cloudy Collected samples:Land soil· Leaf Vegetable· Drinking Water· Dust				
20	Kawamata	11:54	1.5			Cloudy	19:00	1.5		
21	Kawamata·Iitate	12:00	3.7	1m 4.54 Ground Level 5.28			18:44	3.2	1m 4.51 Ground Level 4.78	
22	Iitate	12:10	4.1				18:41	5.2		
23	Iitate	12:11	9.1				18:39	8.1		
24	Iitate	12:14	9.3				18:37	9.2		
25	Iitate	12:17	15.1	1m 22.0 Ground Level 25.9		Cloudy Collected samples Land soil· Leaf Vegetable· Pond Water				
26	Iitate	12:33	8.7			Cloudy	18:35	9.7		
	Iitate (Iitate Village office)	12:38	5.2	1m 8.62 Ground Level 12.1		Snow Collected samples: Dust· Drinking Water				
27	Iitate	13:24	8.4	1m 12.3 Ground Level 14.6		Snow	18:29	6.5	1m 11.8 Ground Level 14.2	
28	Iitate	13:33	7.4	1m 10.9 Ground Level 14.5			18:16	6.5	1m 10.2 Ground Level 13.2	
	Iitate						17:52	4.3		Snow
29	Minamisoma	13:40	5.8							
30	Minamisoma	13:48	5.8			Rain				
31	Minamisoma	13:55	3.2							
32	Minamisoma	13:58	2.2							
33	Minamisoma	14:04	1.6	1m 2.03 Ground Level 2.87						
34	Minamisoma (Minamisoma joint government building)	14:12	1.4	1m 1.64 Ground Level 2.19		Cloudy Collected samples: Land soil· Leaf Vegetable· Drinking Water· Dust				
35	Minamisoma	15:10	1.0			Cloudy				
36	Minamisoma	15:14	1.1							
37	Minamisoma	15:20	0.9							
38	Soma	15:26	1.2			Rain				
39	Soma	15:29	1.2							
	Soma						17:22	1.1		
40	Soma	15:36	1.0				17:18	0.9		Rain
41	Shinchi	15:44	0.9				17:08	0.8		Cloudy
42	Shinchi	15:49	0.8				17:04	0.7		Rain
43	Shinchi (Shinchi Town Hall)	15:53	0.6	1m 0.60 Ground Level 0.74		Cloudy Collected samples:Land soil· Leaf Vegetable· Drinking Water· Dust				

Readings of Environmental Radiation Level in emergency monitoring (Group 2) (3/25)

2011/3/25		Measurement (μ Sv/h)							
Sampling Points		Fukushima Tamura Ono Iwaki				Iwaki Ono Tamura Fukushima			
		Measurement Time	Readings (inside the car)	Readings (Outside the car)	Notes	Measurement Time	Readings (inside the car)	Readings (Outside the car)	Notes
1	Fukushima(Fukushima Branch)								
	Fukushima								
	Fukushima								
	Fukushima								
	Fukushima					17:24	0.74		
2	Fukushima					17:06	2.2		
3	Fukushima					16:57	1.8		
4	Kawamata					16:50	1.3		
5	Kawamata					16:45	1.5		
6	Kawamata					16:42	2.0		
7	Kawamata					16:40	1.5		
8	Kawamata					16:34	1.4		
9	Nihonmatsu(Towa Branch)					16:32	1.5		
10	Nihonmatsu					16:28	1.9		
11	Nihonmatsu					16:18	1.5		
12	Nihonmatsu·Kawamata					16:15	1.3		
13	Tamura					16:11	1.0	1.4	
14	Tamura					15:57	0.50	0.53	
15	Tamura					15:51	0.48		
16	Tamura					15:45	0.46		
17	Tamura					15:43	0.47		
18	Ono					15:40	0.45		
19	Ono					15:33	0.46		
20	Ono					15:32	0.43		
21	Ono					15:30	0.48		
22	Ono (Ono town office)	11:23	0.37	0.37		15:22	0.39	0.34	
23	Ono	12:42	0.54			15:10	0.50		
24	Ono	12:44	0.58			15:08	0.56		
25	Iwaki	12:50	0.87			15:02	0.72		
	Iwaki	12:56	0.74			14:57	0.68		
26	Iwaki	13:10	1.2			14:42	1.1		
27	Iwaki	13:20	1.4			14:31	1.4		
41	Iwaki (Iwaki joint government building)	13:32	0.92	1.3					

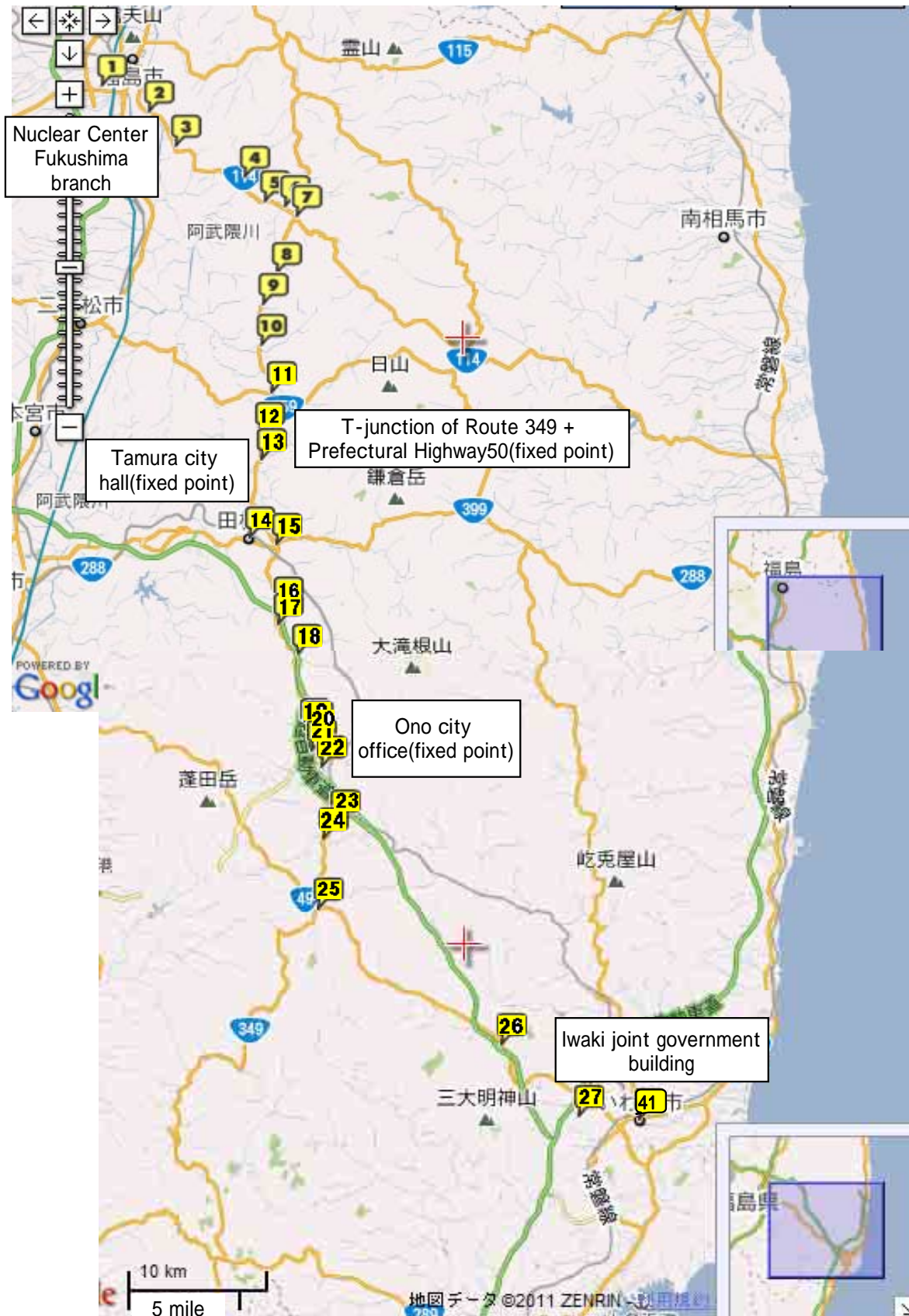
Readings of Environmental Radiation Level in emergency monitoring (Group 3) (3/25)

2011/3/25		Measurement (μ Sv/h)				
Sampling Points		Fukushima	Nihonmatsu	Tamura	Yamakiya	Tsukidate
		Measurement Time	Readings (inside the car)	Readings (Outside the car)	Weather	Notes
1	Fukushima(Fukushima Branch)	10:30	0.8		Cloudy	
2	Fukushima	10:50	1.9		"	
3	Nihonmatsu	10:53	1.5		"	
4	Nihonmatsu(Nihonmatsu city office)	11:07	1.9	3.9	"	Collected samples:Land soil · Leaf Vegetable · Drinking Water · Dust
5	Nihonmatsu	12:46	1.1		"	
6	Nihonmatsu	12:59	0.9		"	
7	Nihonmatsu · Kawamata	13:04	0.7		"	
8	Tamura	13:06	0.5	1.0	Light snow	
9	Tamura(Tamura city office)	13:22	0.2	0.3	Light snow	Collected samples:Land soil · Leaf Vegetable · Drinking Water · Dust
10	Nihonmatsu	14:26	1.3		Cloudy	
11	Kawamata	14:36	1.6		Cloudy	
12	Kawamata(Yamagiya Post office)	14:53	3.4	6.3	Snow	Collected samples:Land soil · Leaf Vegetable · Drinking Water · Dust
13	Kawamata(Kojima Community center)	15:55	1.9		Rain	
14	Date(Date Branch)	16:02	1.8	2.9	Rain	Collected samples:Land soil · Leaf Vegetable · Drinking Water · Dust
15	Fukushima(Fukushima Branch)	18:16	0.6		Snow	

Readings of Environmental Radiation Level by emergency monitoring (Group 1)



Readings of Environmental Radiation Level by emergency monitoring (Group 2)

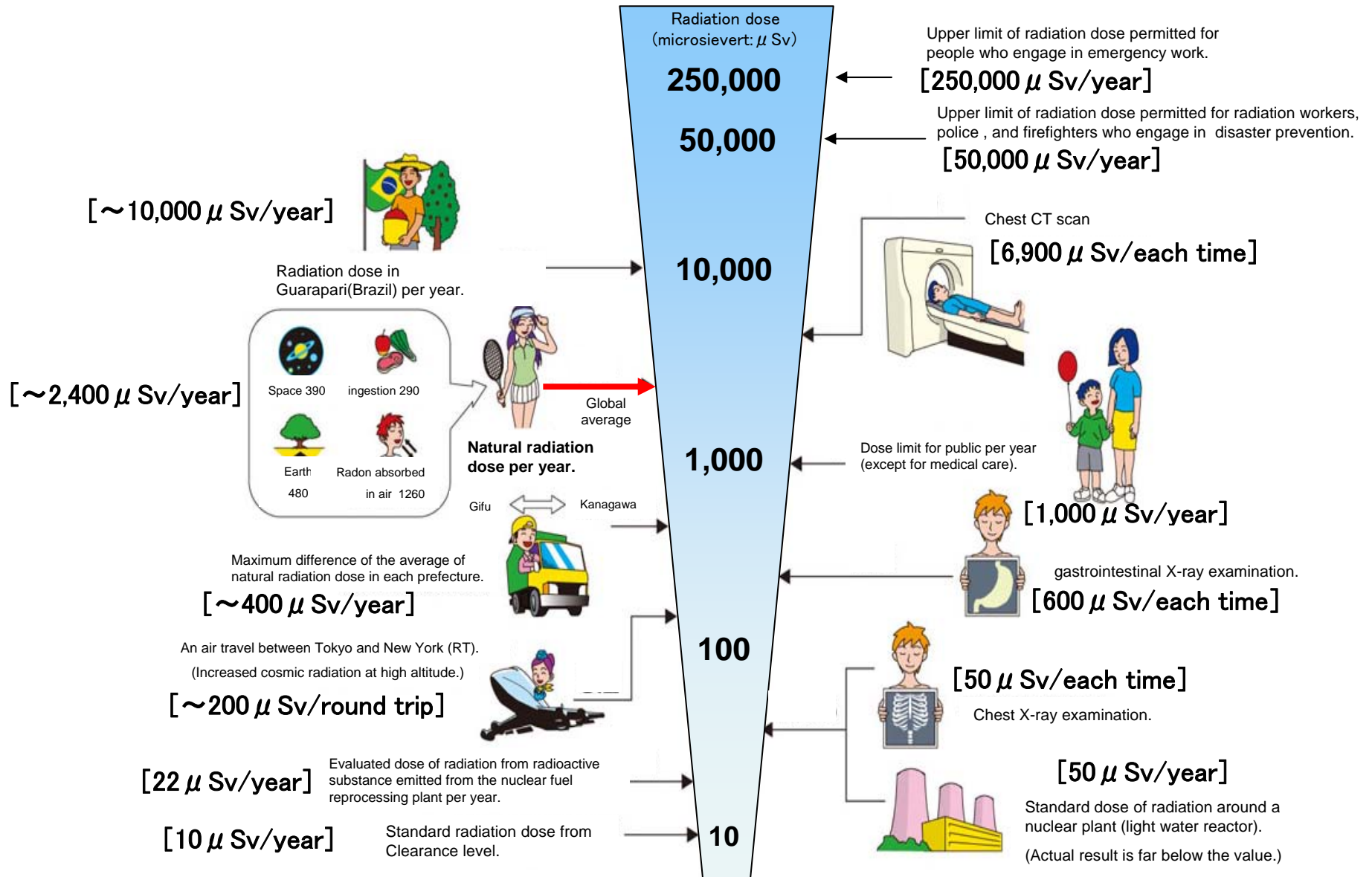


Readings of Environmental Radiation Level by emergency monitoring (Group 3)



Radiation in Daily-life

※Unit : μSv



※ Sv [Sievert] = Constant of organism effect by kind of radiation (※) × Gy [gray]

※ It is 1 in case of X ray and γ ray.