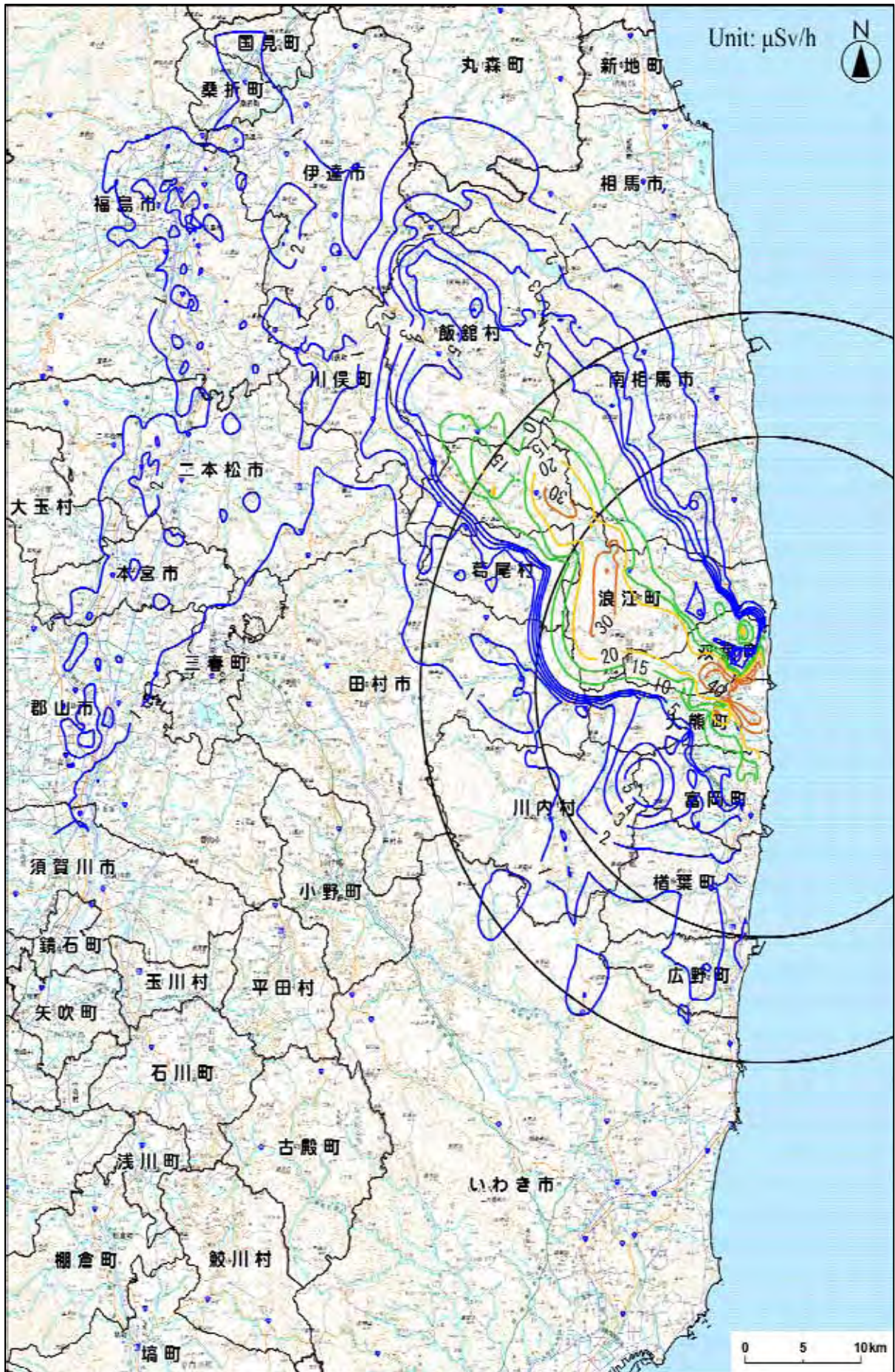


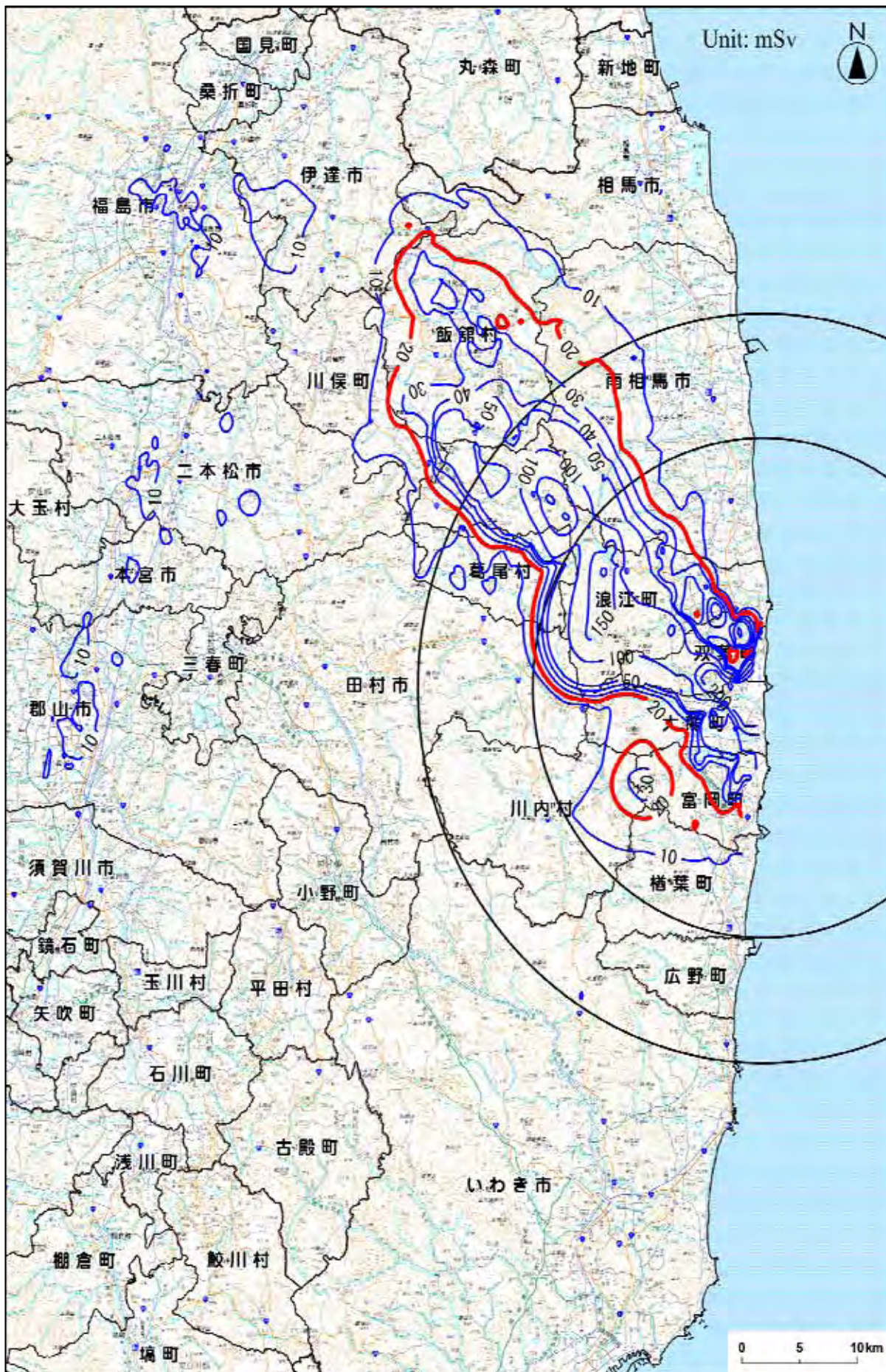
# Dose Readings Map ( Estimated values ) ( as of May 11, 2011 )



Based on actual values observed up to 24:00, May 11, 2011.



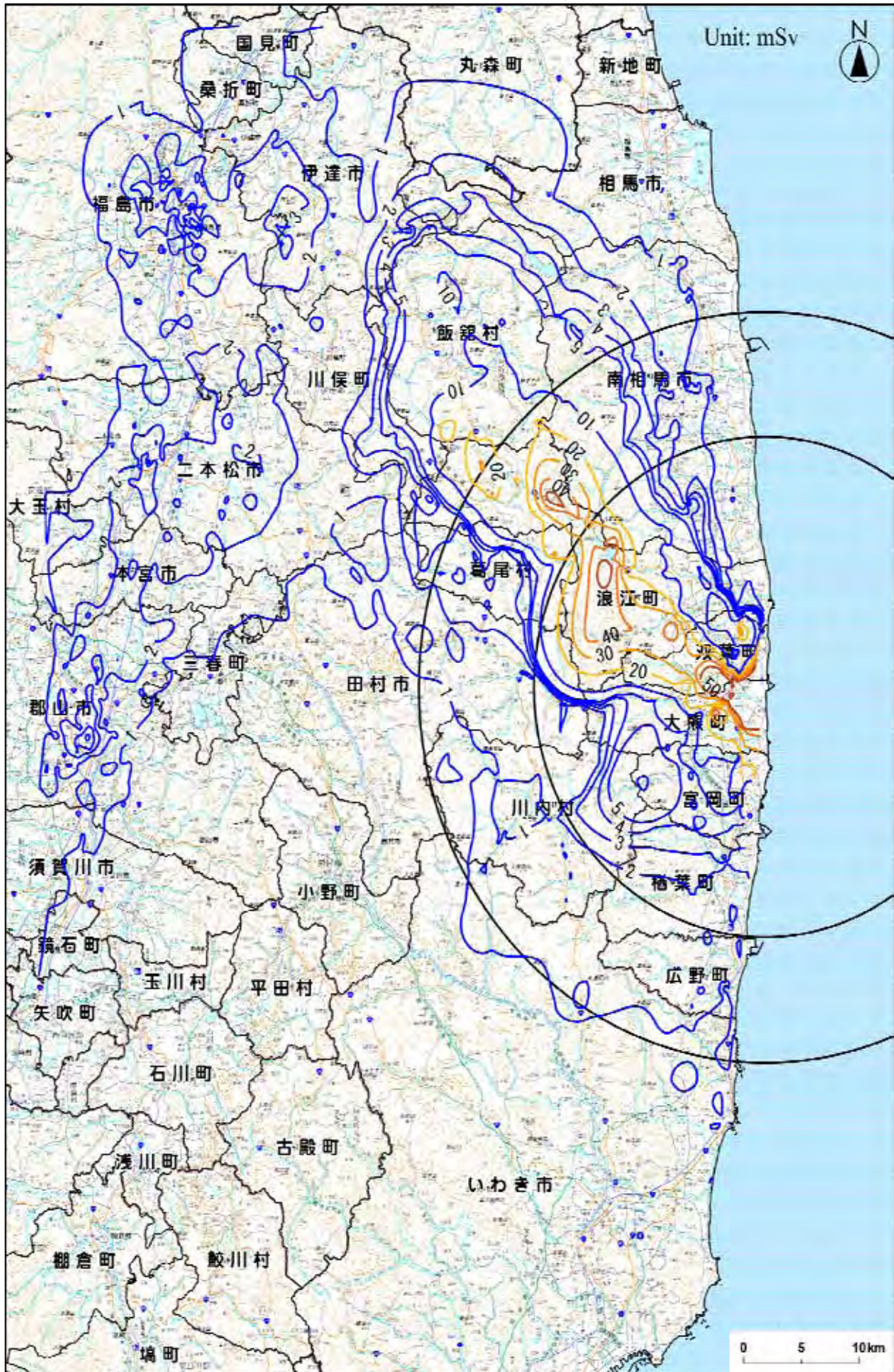
# Integrated Dose Estimation Map (Integrated dose up until March 11, 2012)



Based on actual values observed up to 24:00, May 11, 2011



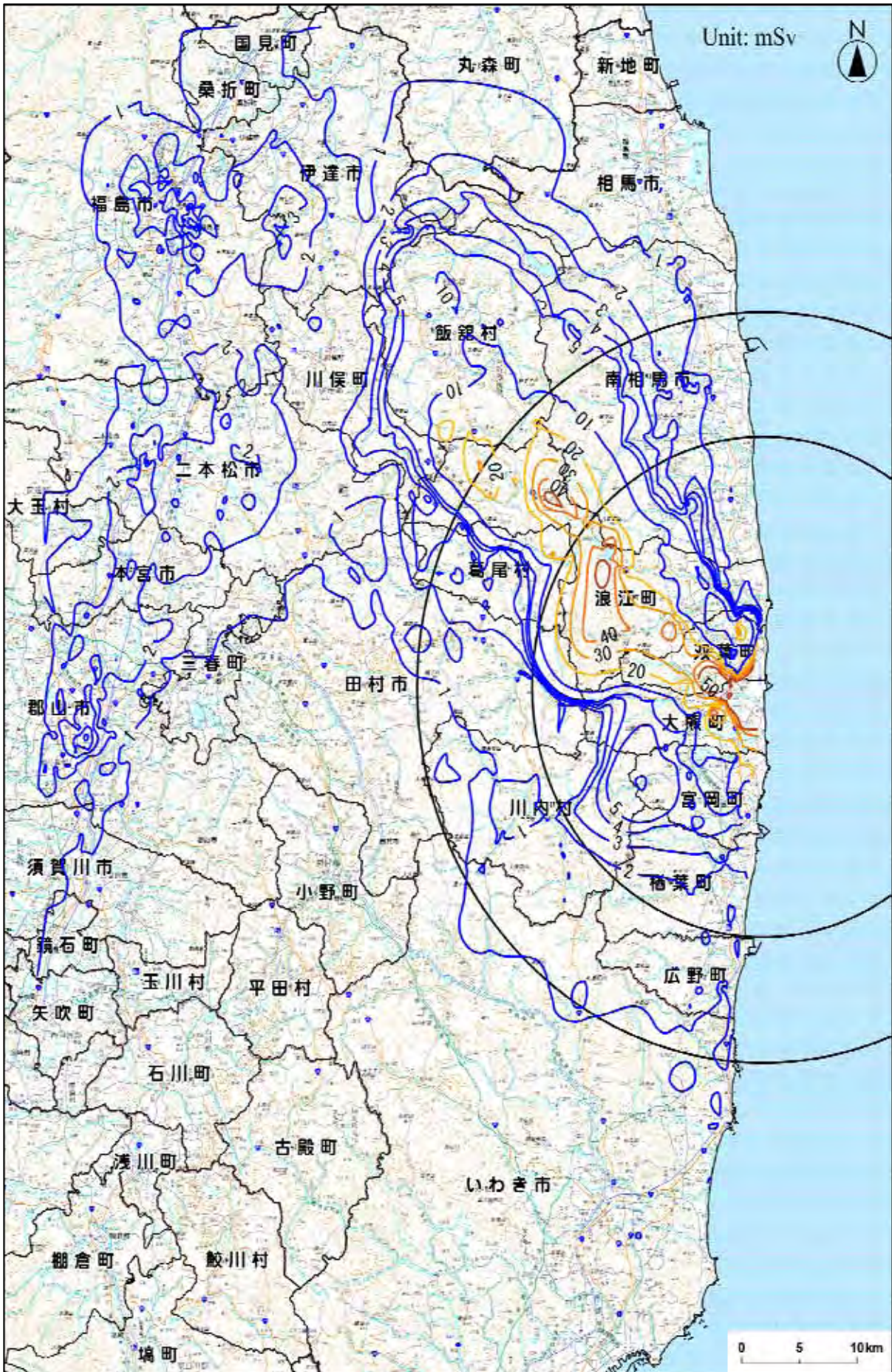
# Integrated Dose Estimation Map (Integrated dose up until May 11, 2011)



Based on actual values observed up to 24:00, May 11, 2011.



# Integrated Dose Estimation Map (Integrated dose up until May 11, 2011)



Based on actual values observed up to 24:00, May 11, 2011.



## Estimates of Integrated Dose at Each Continuous Monitoring Location based on Measured Values ( 1 / 4 )

Location Number	Location (Monitoring Area) [ 10]	From Fukushima Dai-ichi NPP		Starting Date of Monitoring Air Dose Rate	Estimates of Integrated Dose [ 1]		Latest Readings (mSv/h) [ 3]		Estimates of Integrated Dose as of March 11, 2012 (mSv) [ 4]
		Direction	Distance		(mSv)	Note	(mSv/h)	Note	
(1) Planned evacuation zones									
83	Futaba county Namie town Akougi Kunugidaira	North/West	24km	2011/3/24	56.6	[ 2]	0.0371		219.5
32	Futaba county Namie town Akougi Teshichiro	North/West	31km	2011/3/16	29.5	[ 5]	0.0172		105.3
81	Futaba county Namie town Akougi Ishikoya	North/West	30km	2011/3/24	31.2	[ 2]	0.0164		103.3
79	Futaba county Namie town shimotsushima kayabuka	West/North/West	29km	2011/3/16	13.3	[ 5]	0.0084		50.3
31	Futaba county Namie town Tsushima Nakaoki	West/North/West	30km	2011/3/17	12.0	[ 5]	0.0072		43.4
34	Futaba county Namie town Tsushima Taikougi	West/North/West	30km	2011/3/19	5.8	[ 2] [ 5]	0.0035		21.4
21	Futaba County Katsurao Village Kaminogawa	West/North/West	32km	2011/3/17	3.4	[ 5]	0.0029		16.0
104	Futaba county Katsurao Village Oaza Ochiai aza Ochiai	West/North/West	25km	2011/4/7	3.0	[ 2]	0.0013		8.8
33	Soma county litate Village Nagadoro	North/West	33km	2011/3/16	16.5	[ 5]	0.0092		57.1
62	Soma county litate Village Kusano Taishido	North/West	39km	2011/3/17	7.0		0.0050		29.0
61	Soma county litate Village Yagisawa	North/West	36km	2011/3/17	5.5		0.0041		23.5
63	Soma county litate Village Nimaibashi	North/West	44km	2011/3/17	2.5		0.0015		9.0
46	Date county Kawamata town Yamakiya Mukaideyama	West/North/West	34km	2011/3/17	6.6		0.0036		22.4
36	Date county Kawamata town Yamakiya Oonukari	West/North/West	38km	2011/3/20	4.5	[ 2]	0.0028		16.8
(2) Other zones									
108	Minami Soma city Haramachi ward Ohara Daihata	North/North/West	30km	2011/4/7	4.2	[ 2]	0.0028		16.4
107	Minami Soma city Haramachi ward Baba shimo nakouchi	North/North/West	23km	2011/4/7	3.6	[ 2]	0.0021		13.0
6	Minami Soma city Kashima ward Nishimachi	North	32km	2011/3/17	1.1		0.0008		4.5
103	Minami Soma city Haramachi ward Taka Mamegarauchi	North	21km	2011/4/7	0.8	[ 2]	0.0005		3.0
7	Minami Soma city Kashima ward Terauchi Motoyashiki	North/North/West	32km	2011/3/17	0.8	[ 5]	0.0008		4.1
80	Minami Soma city Haramachi ward Takami town	North	25km	2011/3/20	0.9	[ 2] [ 5]	0.0004		2.7
78	Date county kawamata town Tsurusawa	North/West	48km	2011/3/20	1.5		0.0016	[ 6]	8.7
4	Date county Kawamata town oaza Tsurusawa aza Kawabata	North/West	47km	2011/3/17	1.4	[ 2]	0.0010		5.8
37	Date city Ryozen town Ishida Hojizawa	North/West	48km	2011/3/31	4.4	[ 2]	0.0039		21.7
3	Date city Ryozen town Ishida Hikohei	North/West	46km	2011/3/17	3.1		0.0023		13.1
102	Date city Tsukidate town	North/West	51km	2011/4/7	1.7	[ 2]	0.0013		7.5
101	Date city Ryozen town Oishi aza Minowa	North/West	55km	2011/4/7	1.6	[ 2]	0.0011		6.3
2	Fukushima city Onami Takinoiri	North/West	56km	2011/3/17	3.2		0.0022		12.9
88	Fukushima city Higarigaoka	West/North/West	58km	2011/4/3	2.5	[ 2]	0.0017		10.0
1	Fukushima city Sugitsuma town	North/West	62km	2011/3/16	1.6	[ 5]	0.0006		4.1
85	Fukushima city Arai Harajiku	West/North/West	66km	2011/3/27	0.6	[ 2]	0.0005		2.8
77	Iwaki city Ogawa town Kamiogawa	South/West	26km	2011/3/20	1.6	[ 2]	0.0009		5.5
44	Iwaki city Ohisa town Ohisa Yanomezawa	South/South/West	28km	2011/3/17	1.1		0.0004		2.7
72	Iwaki city Hisanohama town Hisanohama aza Kitaaramaki	South	31km	2011/3/20	0.9	[ 2]	0.0003		2.2
38	Iwaki City Yotsukura town Shiraiwa Hokita	South/South/West	34km	2011/3/31	0.8	[ 2] [ 5]	0.0003		1.9
106	Iwaki city Kawamae town Ojiroi aza Syokangoya	West/South/West	32km	2011/4/7	0.3	[ 2]	0.0003		1.7
73	Iwaki City Yotsukura town Shiraiwa Hokita	South	35km	2011/3/20	0.7	[ 2]	0.0002		1.6
74	Iwaki city Ogawa town Takahagi	South/South/West	36km	2011/3/20	0.5	[ 2]	0.0001		1.0
84	Iwaki city Miwa-town Saiso	South/West	39km	2011/3/26	0.3	[ 2] [ 5]	0.0001		0.9
75	Iwaki city Uchigoumiyamaya town	South/South/West	43km	2011/3/20	0.3	[ 2]	0.0000		0.3
45	Futaba county Naraha town Yamadaoka Utsukushimori	South	20km	2011/3/17	1.3		0.0006		3.8
71	Futaba county Hirono town Shimokitaba Nawashirogae	South	23km	2011/3/20	1.1	[ 2] [ 5]	0.0003		2.3
11	Nihonmatsu city Ota aza Shimoda	West/North/West	43km	2011/3/17	1.5		0.0011		6.4
10	Nihonmatsu city Harimichi Nakajima	West/North/West	44km	2011/3/17	1.1		0.0008		4.4
35	Nihonmatsu city Tazawa Hagidaira	West/North/West	37km	2011/3/19	0.8	[ 2]	0.0006	[ 6]	3.6

## Estimates of Integrated Dose at Each Continuous Monitoring Location based on Measured Values ( 2 / 4 )

Location Number	Location (Monitoring Area) [ 10]	From Fukushima Dai-ichi NPP		Starting Date of Monitoring Air Dose Rate	Estimates of Integrated Dose [ 1]		Latest Readings (mSv/h) [ 3]	Estimates of Integrated Dose as of March 11, 2012 (mSv) [ 4]
		Direction	Distance		(mSv)	Note		
89	Koriyama city Toyota town	West	60km	2011/4/3	2.5	[ 2]	0.0010	6.9
86	Koriyama city Ootsuki town Choemonbayashi	West	63km	2011/3/27	1.4	[ 2]	0.0007	4.5
87	Futaba county Kawauchi Village Kamikawauchi Hananouchi	West/South/West	29km	2011/3/27	1.1	[ 2]	0.0007	4.2
76	Futaba county Kawauchi Village Kamikawauchi Hayawata	West/South/West	22km	2011/3/20	0.7	[ 2] [ 5]	0.0003	2.1
43	Futaba county Kawauchi Village Shimokawauchi Miyawata	West/South/West	22km	2011/3/16	0.6		0.0003	2.0
15	Tamura city Tokiwa town Yamane Kashima	West	32km	2011/3/17	1.1	[ 5]	0.0008	4.4
42	Tamura city Tokiwa town Yamane Tomioka	West	33km	2011/3/17	1.0		0.0007	3.8
23	Tamura city Funehiki town Minamiutsushi Suichu-uchi	West/North/West	37km	2011/3/17	0.8		0.0007	3.8
41	Tamura City Miyakoji town Furumichi	West	21km	2011/3/17	0.9		0.0005	3.0
20	Tamura city Funehiki town Niitate shimo	West	41km	2011/3/17	0.7		0.0005	2.7
22	Tamura city Funehiki town Kamiutsushi aza Ushirota	West/North/West	35km	2011/3/17	0.6		0.0004	2.1
105	Tamura city Miyakoji town Furumichi aza Teranomae	West	21km	2011/4/7	0.4	[ 2]	0.0003	1.9
13	Tamura city Tokiwa town Tokiwa Uchimachi Tamura city Tokiwa town	West	37km	2011/3/17	0.5		0.0003	1.7
12	Tamura city Funehiki town Funehiki aza Ozawakawashiro	West	39km	2011/3/17	0.3		0.0003	1.7
14	Tamura city Tokiwa town Tokiwa Uchimachi	West	34km	2011/3/17	0.4		0.0003	1.5
52	Tamura city Funehiki town funehiki Babakawara	West	41km	2011/3/17	0.3		0.0002	1.2
39	Soma city Yamakami Kaminamiki	North/North/West	41km	2011/4/1	1.0	[ 2] [ 5]	0.0006	3.8
5	Soma city Nakanoteramae	North/North/West	42km	2011/3/17	0.7		0.0005	3.0
51	Tamura county Ono town Ononiimachi Tatemawari	West/South/West	39km	2011/3/17	0.3		0.0002	1.2

This table was jointly compiled by the Nuclear Safety Commission, MEXT, and the Nuclear and Industrial Safety Agency.

\*1 Shown values are integrated values monitored from 6:00, March 12 through 24:00, April 21. The same estimation method as that used by the Nuclear Safety Commission on March 28, 2011 is used, whereby the values are estimated by multiplying the monitored values by 0.6 in consideration of the reduction effect of wooden buildings (0.4) when staying outdoors for eight hours and indoors for 16 hours.

\*2 For locations where the monitoring was started on or after March 19, the dose data for the period from March 16 to the day before the start of monitoring has been derived by assuming that the dose has changed in proportion to changes at Location No. 32, where the steepest dose change has been observed.

\*3 Shown values are the latest air dose rates monitored by the time of the press release at 10:00, May 12. As for locations [\*5] where actual values have been obtained by a simple integrating dosimeter, the values are the integrated values monitored since the time of the previous data sampling divided by the time lapsed.

\*4 Shown values have been obtained by the same method as that mentioned in \*1, while supposing that the latest monitored values [\*3] will stay unchanged on and after MAy 12.

\*5 For the period where actual values monitored by a simple integrating dosimeter are available, such values are indicated.

Estimates of Integrated Dose at Each Continuous Monitoring Location based on Measured Values ( 3 / 4 )

Location Number	Location (Motiroring Area)[ 10]	From Fukushima Dai-ichi NPP		Starting Date of Monitoring Air Dose Rate	Estimates of Integrated Dose (mSv) [ 7, 8]	Estimated values as of May 11 (mSv/h)	Estimates of Integrated Dose as of March 11, 2012 (mSv) [ 4]
		Direction	Distance				
(3)Planned evacuation zones(added point)							
i28	Soma county litate Village Hiso	North/West	34km	2011/4/26	28.2	0.0147	92.9
i27	Soma county litate Village Nagadoro	North/West	33km	2011/4/26	21.5	0.0159	91.3
i26	Soma county litate Village Nagadoro	North/West	31km	2011/4/26	17.3	0.0109	65.3
i24	Soma county litate Village Komiya	North/West	32km	2011/4/26	15.3	0.0095	57.2
i25	Soma county litate Village Warabidaira	North/West	29km	2011/4/26	14.8	0.0095	56.4
i4	Soma county litate Village Fukaya	North/West	41km	2011/4/25	14.1	0.0085	51.2
i22	Soma county litate Village Komiya	North/West	35km	2011/4/26	11.8	0.0079	46.5
i20	Soma county litate Village Sekisawa	North/West	36km	2011/4/26	9.6	0.0079	44.3
i13	Soma county litate Village Maeta	North/West	43km	2011/4/25	12.0	0.0068	41.8
i19	Soma county litate Village Sekisawa	North/West	38km	2011/4/26	10.9	0.0070	41.5
i29	Soma county litate Village Hiso	North/West	38km	2011/4/26	10.1	0.0063	37.9
i23	Soma county litate Village Komiya	North/West	36km	2011/4/26	9.8	0.0063	37.3
i21	Soma county litate Village Komiya	North/West	33km	2011/4/26	9.5	0.0062	36.8
i14	Soma county litate Village Kusano	North/West	40km	2011/4/25	8.9	0.0054	32.4
i10	Soma County litate Village Sasu	North/West	46km	2011/4/25	8.9	0.0052	31.8
i9	Soma county litate Village Maeta	North/West	45km	2011/4/25	9.6	0.0048	30.8
i2	Soma county litate Village Itamizawa	North/West	39km	2011/4/25	7.9	0.0052	30.6
i31	Soma county litate Villagelitoi	North/West	38km	2011/4/26	7.8	0.0049	29.4
i7	Soma county litate Village Usuishi	North/West	42km	2011/4/25	8.0	0.0048	29.2
i3	Soma county litate Village Kusano	North/West	39km	2011/4/25	8.0	0.0048	28.9
i6	Soma county litate VillageFukaya	North/West	41km	2011/4/25	11.0	0.0040	28.8
i32	Soma county litate Village litoi	North/West	37km	2011/4/26	6.4	0.0049	28.1
i30	Soma county litate Village litoi	North/West	40km	2011/4/26	7.3	0.0045	27.1
i5	Soma county litate Village Fukaya	North/West	40km	2011/4/25	7.5	0.0045	27.1
i18	Soma county litate Village Yagisawa	North/West	36km	2011/4/25	6.1	0.0044	25.5
i11	Soma County litate Village Sasu	North/West	46km	2011/4/25	7.0	0.0041	24.9
i1	Soma county litate Village Itamizawa	North/West	39km	2011/4/25	7.0	0.0040	24.7
i17	Soma county litate Village Kusano	North/West	38km	2011/4/25	6.5	0.0038	23.3
i12	Soma County litate Village Sasu	North/West	43km	2011/4/25	4.8	0.0031	18.3
i8	Soma county litate Village Nimaibashi	North/West	44km	2011/4/25	4.0	0.0031	17.5
i15	Soma county litate Village Ookura	North/North/West	40km	2011/4/25	5.1	0.0028	17.3
i16	Soma county litate Village Ookura	North/North/West	40km	2011/4/25	3.7	0.0027	15.4
K8	Futaba-country Katsurao-Village Katsurao	North/West	21km	2011/4/25	32.3	0.0190	115.8
K7	Futaba-country Katsurao-Village Katsurao	North/West	23km	2011/4/25	16.3	0.0097	59.1
K6	Futaba-country Katsurao-Village Katsurao	West/North/West	26km	2011/4/25	15.8	0.0097	58.6
K9	Futaba-country Katsurao-Village Ochiai	West/North/West	21km	2011/4/25	5.6	0.0024	16.1
K4	Futaba County Katsurao Village Nogawa	West/North/West	28km	2011/4/25	4.5	0.0026	15.8
K1	Futaba-country Katsurao-Village Katsurao	West/North/West	32km	2011/4/25	3.7	0.0020	12.6
K2	Futaba-country Katsurao-Village Katsurao	West/North/West	30km	2011/4/25	3.1	0.0020	12.0
K11	Futaba-country Katsurao-Village Ochiai	West/North/West	21km	2011/4/25	3.6	0.0017	11.2
K3	Futaba-country Katsurao-Village Katsurao	West/North/West	28km	2011/4/25	2.8	0.0017	10.4
K10	Futaba-country Katsurao-Village Ochiai	West/North/West	24km	2011/4/25	2.4	0.0017	9.9
K5	Futaba County Katsurao Village Nogawa	West/North/West	29km	2011/4/25	3.0	0.0015	9.7
kw6	Date county Kawamata town Yamakiya	West/North/West	33km	2011/4/26	13.2	0.0079	48.1
kw4	Date county Kawamata town Yamakiya	West/North/West	37km	2011/4/26	4.8	0.0029	17.3
kw3	Date county Kawamata town Yamakiya	West/North/West	40km	2011/4/26	3.2	0.0019	11.7
kw5	Date county Kawamata town Yamakiya	West/North/West	34km	2011/4/26	3.2	0.0019	11.7
ms6	Minami Soma city Haramachi ward Baba	North/West	21km	2011/4/26	18.4	0.0111	67.1
ms4	Minami Soma city Haramachi ward Takanokura	North/West	27km	2011/4/26	7.5	0.0045	27.4

Estimates of Integrated Dose at Each Continuous Monitoring Location based on Measured Values ( 4 / 4 )

Location Number	Location (Monitoring Area) [ 10 ]	From Fukushima Dai-ichi NPP		Starting Date of Monitoring Air Dose Rate	Estimates of Integrated Dose (mSv) [ 7, 8 ]	Estimated values as of May 11 (mSv/h)	Estimates of Integrated Dose as of March 11, 2012 (mSv) [ 4 ]
		Direction	Distance				
n5	Futaba county Namie town Hirusone	North/West	22km	2011/4/27	61.1	0.0441	254.8
n11	Futaba county Namie town Hirusone	North/West	20km	2011/5/2	46.9	0.0282	170.8
n1	Futaba county Namie town Akougi	North/West	31km	2011/4/27	35.3	0.0255	147.3
n2	Futaba county Namie town Akougi	North/West	28km	2011/4/27	31.2	0.0243	137.9
n7	Futaba county Namie town Minamitsushima	North/West	23km	2011/4/27	33.3	0.0231	134.9
n4	Futaba county Namie town Akougi	North/West	26km	2011/4/27	28.8	0.0224	127.1
n9	Futaba county Namie town shimotsushima	West/North/West	29km	2011/4/27	15.6	0.0236	119.4
n6	Futaba county Namie town Minamitsushima	North/West	25km	2011/4/27	26.3	0.0152	92.9
n3	Futaba county Namie town Akougi	North/West	28km	2011/4/27	21.0	0.0155	89.1
n8	Futaba county Namie town shimotsushima	North/West	27km	2011/4/27	22.5	0.0152	89.1
n10	Futaba county Namie town Hatsuke	West/North/West	33km	2011/4/27	3.3	0.0021	12.5
(4)Other zones (added point)							
kw1	Date county kawamata town Kotunagi-aza-awahukuji	North/West	42km	2011/4/26	2.5	0.0015	8.9
kw2	Date county kawamata town Kotunagi-aza-awahukuji	North/West	42km	2011/4/26	2.2	0.0013	7.8
ms1	Minami Soma city Haramachi ward Ohara	North/North/West	33km	2011/4/26	5.4	0.0032	19.6
ms5	Minami Soma city Haramachi ward Takanokura	North/North/West	25km	2011/4/26	4.6	0.0028	16.8
ms11	Minami Soma city Haramachi ward Ohara	North/North/West	29km	2011/4/26	3.7	0.0022	13.4
ms2	Minami Soma city Kashima ward Jisabara	North/North/West	32km	2011/4/26	2.8	0.0017	10.1
ms7	Minami Soma city Haramachi ward Baba	North/North/West	22km	2011/4/26	1.5	0.0009	5.6
ms3	Minami Soma city Kashima ward Kamitochikubo	North/North/West	36km	2011/4/26	1.4	0.0008	5.0
ms8	Minami Soma city Haramachi ward Kanezawa	North	27km	2011/4/26	0.2	0.0001	0.6
ms10	Minami Soma city Haramachi ward Taka	North	21km	2011/4/26	0.2	0.0001	0.6
ni1	Nihonmatsu city Kamikawasaki	West/North/West	51km	2011/4/25	2.2	0.0013	7.8
ni2	Nihonmatsu city Tazawa	West/North/West	36km	2011/4/26	1.7	0.0010	6.2
mo1	Motomiya City Wada	West/North/West	52km	2011/4/25	2.5	0.0015	9.0
ko1	Koriyama city Tsurumitan	West	59km	2011/4/25	4.0	0.0024	14.5
ko2	Koriyama city Saikon	West	60km	2011/4/25	2.0	0.0012	7.3
d4	Date city Ryozen town Kamioquni	North/West	55km	2011/4/27	4.4	0.0027	16.2
d2	Date city Ryozen town Shimooguni	North/West	55km	2011/4/27	4.0	0.0024	14.6
d5	Date city Ryozen town Ishida	North/West	48km	2011/4/27	3.9	0.0023	14.1
d3	Date city Ryozen town Kamioquni	North/West	55km	2011/4/27	3.2	0.0019	11.5
d13	Fukushima city Nankodai	North/West	59km	2011/4/27	2.6	0.0016	9.4
d6	Fukushima city Koganeyama	North/West	62km	2011/4/27	3.0	0.0021	11.9
d11	Fukushima city Higashihama town	North/West	61km	2011/4/27	2.3	0.0014	8.3
d1	Fukushima city Minamiyanome	North/West	66km	2011/4/27	1.9	0.0011	6.8
d12	Fukushima city Watari	North/West	61km	2011/4/27	1.9	0.0011	6.8
d7	Fukushima city Sankyoue	North/West	63km	2011/4/27	1.4	0.0009	5.2
d10	Fukushima city Hamada town	North/West	61km	2011/4/27	1.4	0.0009	5.2
d8	Fukushima city Miyashita town	North/West	63km	2011/4/27	1.7	0.0014	7.5
d9	Fukushima city Shinama town	North/West	62km	2011/4/27	1.0	0.0006	3.5

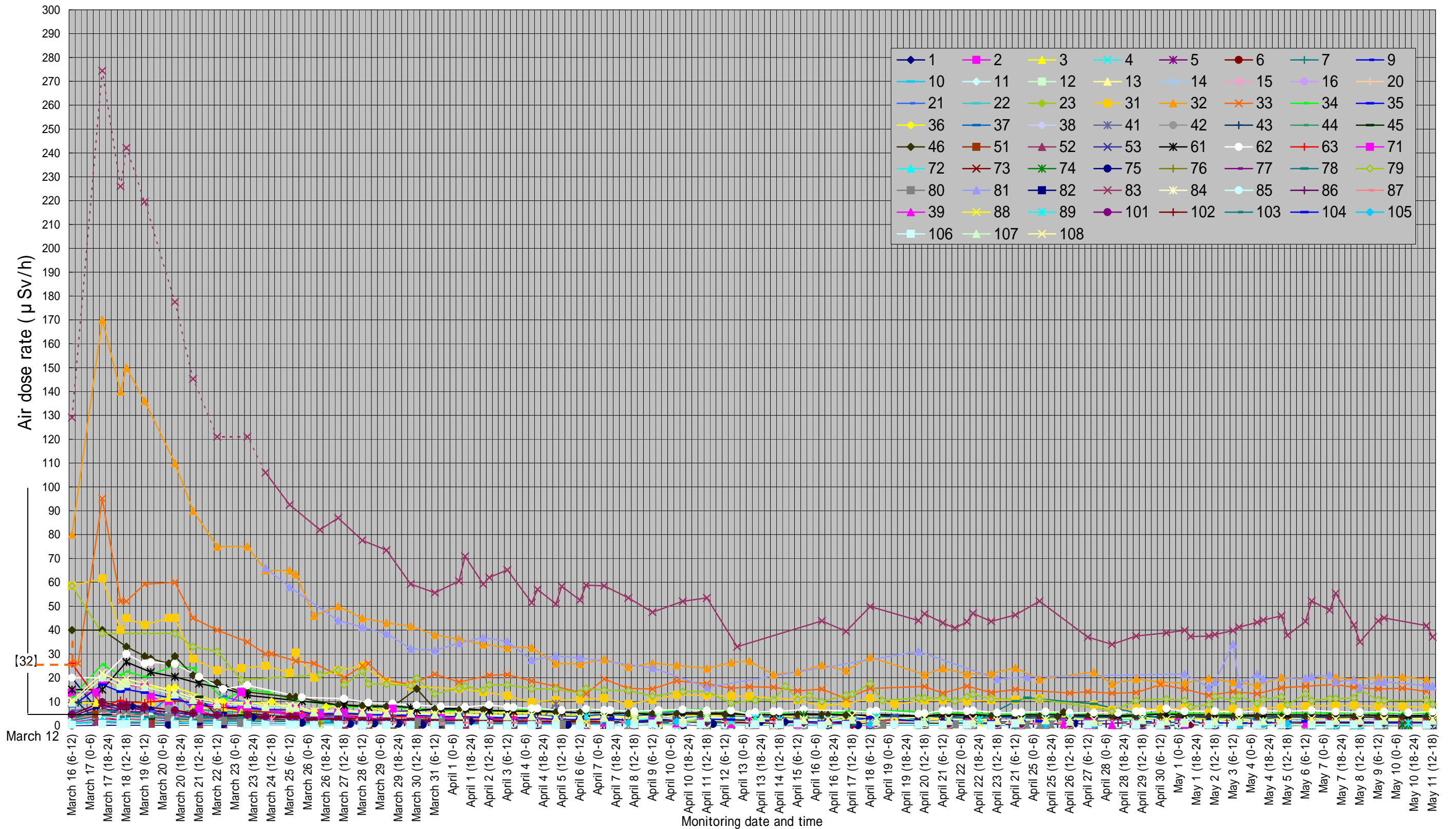
- \*7: The integrated dose from 6 o'clock on March 12 to 24 o'clock May 11. Radioactive decay by wooden houses, assuming people stayed 16 hours in the houses, are taken into account
- \*8: The dose data for the period from March 16 to the day before the start of monitoring has been derived by assuming that the dose has changed in proportion to changes at Location No. 32, where the steepest dose change has been observed.
- \*9: Values have been obtained while supposing that the estimated values for May 11 will stay unchanged on and after May 12.
- \*10: Information on the latitude and longitude of each monitoring spot is available on the MEXT website.

To prepare the isogram map of estimated integrated doses, the values for a total of 2,448 locations were used (the 151 locations mentioned above plus the air dose monitoring locations mentioned below [2,297 locations]).

- (1) Air dose rates observed in the emergency environmental monitoring conducted by Fukushima Prefecture from March 30 to MAY 1: 91 locations
- (2) Air dose rates observed in monitoring conducted by MEXT on April 9 in Katsurao Village and Namie Town: 16 locations
- (3) Air dose rates observed in monitoring conducted by MEXT on April 12 and April 14 in Iitate Village, Iwaki City, Katsurao Village, Kawauchi Village, Namie Town, Hirono Town, and Minami Soma City: 172 locations
- (4) Air dose rates observed within the area covered by the isogram map in the grid survey conducted by Fukushima Prefecture from April 12 to April 16: 1,790 locations
- (5) Air dose rates observed inside the 20 km zone in monitoring conducted by MEXT and TEPCO on March 30 and 31, and April 2, 18 and 19: 228 locations



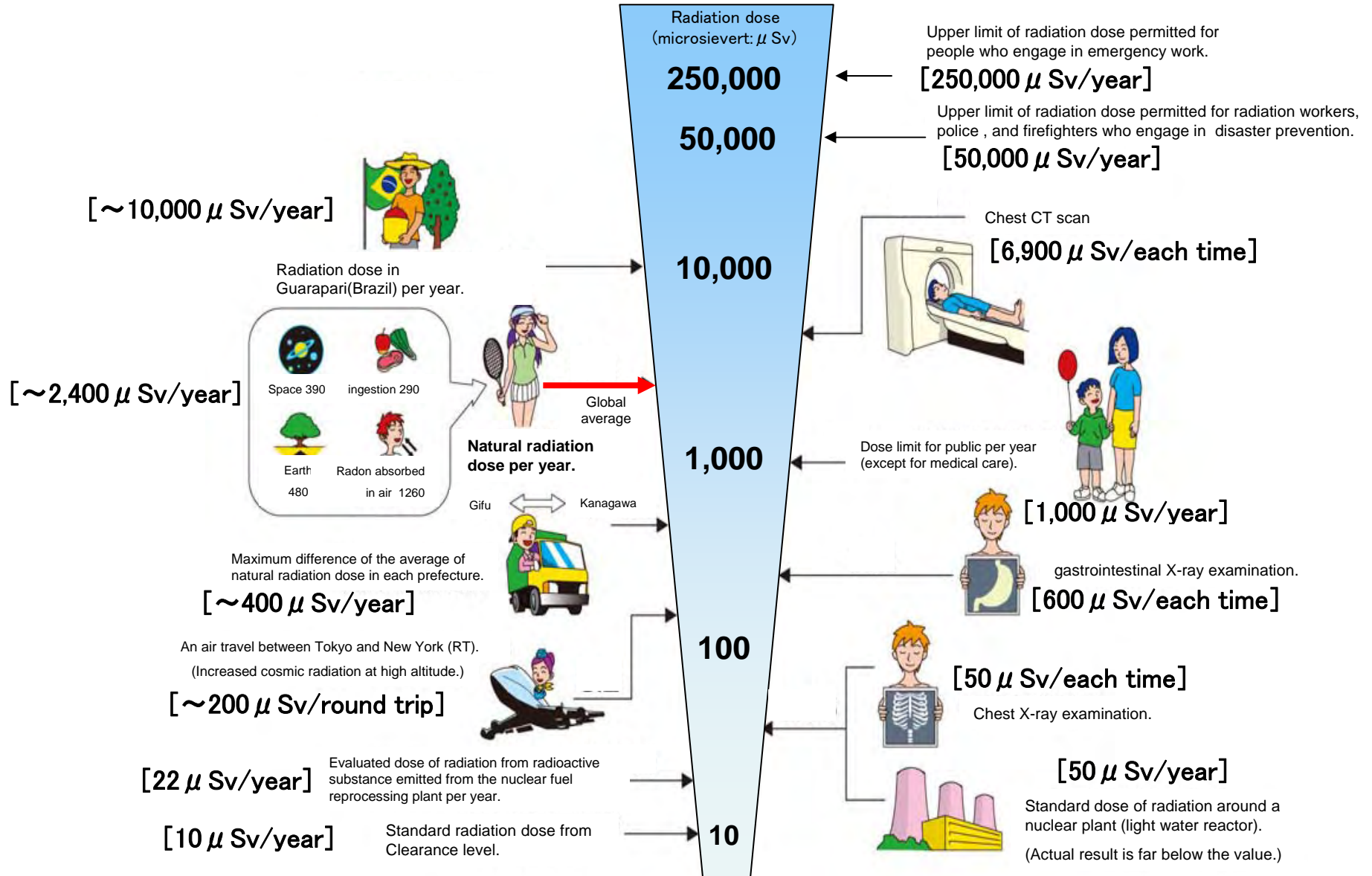
# Changes in Air Dose Rate Readings



Notes: In cases where more than one reading was taken during the six-hour period, the maximum value is plotted.  
The dotted lines show estimates assumed as being proportional to the value at location 32, not measured values.

# Radiation in Daily-life

※Unit :  $\mu\text{Sv}$



※ Sv [Sievert] = Constant of organism effect by kind of radiation (※) × Gy [gray]

※ It is 1 in case of X ray and  $\gamma$  ray.