

## Readings of Air Dose Rate in Fukushima Pref. (Report No.6)

As of 10:00 May 18, 2011

**\*1 Value measured by simple dosimeters (pocket dosimeters) .**

Reading point (Distance from Fukushima Dai-ichi NPP)	Installation Date and Time	Date and Time (last monitoring) (x)	Readings (last monitoring) (a) ( $\mu$ Sv)	Monitoring Date and Time (y)	Reading of Integrated Dose (b) ( $\mu$ Sv)	Accumulated Time (z = y - x)	Reading of integrated Dose (c = b - a) ( $\mu$ Sv)
							Average does per hour (c/z)
Northern part's health and welfare office [1] (About61kmNorth/West)	2011/4/11 10:40	2011/5/9 10:00	1772 <sup>*1</sup>	2011/5/16 10:00	2140	168hour00minutes	368 (2.2 $\mu$ Sv/h)
Date City Hall [2] (About62kmWest/North/West)	2011/4/11 14:30	2011/5/9 10:00	688 <sup>*1</sup>	2011/5/16 10:00	843	168hour00minutes	155 (0.9 $\mu$ Sv/h)
Motomiya City Hall [3] (About57kmWest)	2011/4/12 10:55	2011/5/9 10:30	569 <sup>*1</sup>	2011/5/16 10:30	698	168hour00minutes	129 (0.8 $\mu$ Sv/h)
Fukushima Northern Police Station Koori branch [4] (About62kmNorth/West)	2011/4/12 10:00	2011/5/9 10:05	816 <sup>*1</sup>	2011/5/16 10:30	998	168hour25minutes	182 (1.1 $\mu$ Sv/h)
Kunimi Town Hall [5] (About61kmNorth/West)	2011/4/11 15:20	2011/5/9 11:00	676 <sup>*1</sup>	2011/5/16 9:50	820	166hour50minutes	144 (0.9 $\mu$ Sv/h)
Ootama Village Hall [6] (About60kmWest/North/West)	2011/4/12 10:30	2011/5/9 8:30	312 <sup>*1</sup>	2011/5/16 9:00	381	168hour30minutes	69 (0.4 $\mu$ Sv/h)
Nihonmatsu City Hall [7] (About56kmWest/North/West)	2011/3/30 10:27	2011/5/9 10:30	1827 <sup>*1</sup>	2011/5/16 9:38	2080	167hour08minutes	253 (1.5 $\mu$ Sv/h)
Kawamata Town Hall [8] (About47kmWest/North/West)	2011/3/30 11:10	2011/5/9 10:17	870 <sup>*1</sup>	2011/5/16 9:57	978	167hour40minutes	108 (0.6 $\mu$ Sv/h)
Fukushima City lino branch office [9] (About51kmNorth/West)	2011/3/30 10:32	2011/5/9 15:49	1154 <sup>*1</sup>	2011/5/16 15:36	1308	167hour47minutes	154 (0.9 $\mu$ Sv/h)
Kooriyama Joint government building [10] (About58kmWest)	2011/4/10 10:00	2011/5/9 10:00	839 <sup>*1</sup>	2011/5/16 10:00	1022	168hour00minutes	183 (1.1 $\mu$ Sv/h)
Sugakawa City Hall [11] (About60kmWest/South/West)	2011/4/10 10:20	2011/5/9 10:00	345 <sup>*1</sup>	2011/5/16 10:00	415	168hour00minutes	70 (0.4 $\mu$ Sv/h)
Kagamiishi Town Hall [12] (About64kmWest/South/West)	2011/4/10 11:00	2011/5/9 10:00	320 <sup>*1</sup>	2011/5/16 10:00	410	168hour00minutes	90 (0.5 $\mu$ Sv/h)
Tenei Village Hall [13] (About72kmWest/South/West)	2011/4/10 11:54	2011/5/9 9:58	816 <sup>*1</sup>	2011/5/16 10:05	988	168hour07minutes	172 (1.0 $\mu$ Sv/h)
Ishikawa Town Hall [14] (About60kmWest/South/West)	2011/4/11 16:51	2011/5/9 10:50	87 <sup>*1</sup>	2011/5/16 11:00	107	168hour10minutes	20 (0.1 $\mu$ Sv/h)
Tamakawa Village Hall [15] (About60kmWest/South/West)	2011/5/2 18:06	2011/5/9 10:00	66 <sup>*1</sup>	2011/5/16 10:00	130	168hour00minutes	64 (0.4 $\mu$ Sv/h)
Asakawa Town Hall [16] (About67kmSouth/West)	2011/4/10 15:30	2011/5/9 10:00	166 <sup>*1</sup>	2011/5/16 10:00	203	168hour00minutes	37 (0.2 $\mu$ Sv/h)

\*1 Value measured by simple dosimeters (pocket dosimeters) .

Reading point (Distance from Fukushima Dai-ichi NPP)	Installation Date and Time	Date and Time (last monitoring) (x)	Readings (last monitoring) (a) ( $\mu$ Sv)	Monitoring Date and Time (y)	Reading of Integrated Dose (b) ( $\mu$ Sv)	Accumulated Time (z = y - x)	Reading of integrated Dose (c = b - a) ( $\mu$ Sv)
							Average does per hour (c / z)
Furudono Town Hall [17] (About56k mSouth/West)	2011/5/2 16:48	2011/5/10 11:00	31 <sup>*1</sup>	2011/5/16 11:00	63	144hour00minutes	32 (0.2 $\mu$ Sv/h)
Tamura City Miyakoji Administration Bureau [18] (About21k mWest)	2011/3/30 13:00	2011/5/9 14:15	593 <sup>*1</sup>	2011/5/16 14:04	674	167hour49minutes	81 (0.5 $\mu$ Sv/h)
Iwaisawa Elementary School [19] (About27k mWest)	2011/3/30 13:20	2011/5/9 14:28	1254 <sup>*1</sup>	2011/5/16 14:17	1423	167hour49minutes	169 (1.0 $\mu$ Sv/h)
Tokiwa Administration Bureau [20] (About35k mWest)	2011/3/30 14:20	2011/5/9 14:46	471 <sup>*1</sup>	2011/5/16 14:31	533	167hour45minutes	62 (0.4 $\mu$ Sv/h)
Tamura City Hall [21] (About41k mWest)	2011/3/30 12:05	2011/5/9 12:15	402 <sup>*1</sup>	2011/5/16 11:20	460	167hour05minutes	58 (0.3 $\mu$ Sv/h)
Miharu Town Hall [22] (About48k mWest)	2011/5/2 19:23	2011/5/10 13:00	98 <sup>*1</sup>	2011/5/16 13:00	176	144hour00minutes	78 (0.5 $\mu$ Sv/h)
Environment Center [23] (About60k mWest)	2011/3/30 16:08	2011/5/9 10:01	1132 <sup>*1</sup>	2011/5/16 10:00	1298	167hour59minutes	166 (1.0 $\mu$ Sv/h)
Ono Town Hall [24] (About39k mWest/South/West)	2011/3/30 10:56	2011/5/9 10:48	174 <sup>*1</sup>	2011/5/16 10:37	201	167hour49minutes	27 (0.2 $\mu$ Sv/h)
Hirata Village Hall [25] (About47k mWest/South/West)	2011/4/1 17:40	2011/5/9 14:40	319 <sup>*1</sup>	2011/5/16 14:51	361	168hour11minutes	42 (0.2 $\mu$ Sv/h)
Shirakawa joint government Hall [26] (About81k mSouth/West)	2011/4/18 14:17	2011/5/9 10:00	302 <sup>*1</sup>	2011/5/16 11:50	399	169hour50minutes	97 (0.6 $\mu$ Sv/h)
Nishigou Village Hall [27] (About84k mWest/South/West)	2011/4/7 15:30	2011/5/9 10:55	467 <sup>*1</sup>	2011/5/16 11:00	557	168hour05minutes	90 (0.5 $\mu$ Sv/h)
Izumizaki Village Hall [28] (About72k mWest/South/West)	2011/4/7 17:40	2011/5/9 10:00	343 <sup>*1</sup>	2011/5/16 10:00	411	168hour00minutes	68 (0.4 $\mu$ Sv/h)
Nakajima Village Hall [29] (About68k mWest/South/West)	2011/4/7 17:10	2011/5/9 8:50	123 <sup>*1</sup>	2011/5/16 9:00	146	168hour10minutes	23 (0.1 $\mu$ Sv/h)
Yabuki Town Hall [30] (About66k mWest/South/West)	2011/4/7 16:40	2011/5/9 10:00	330 <sup>*1</sup>	2011/5/16 10:00	395	168hour00minutes	65 (0.4 $\mu$ Sv/h)
Tanagura Town Hall [31] (About73k mWest/South/West)	2011/4/8 16:45	2011/5/9 11:00	224 <sup>*1</sup>	2011/5/16 10:00	272	167hour00minutes	48 (0.3 $\mu$ Sv/h)
Yamatsuri Town Hall [32] (About82k mSouth/West)	2011/4/8 15:40	2011/5/9 10:00	115 <sup>*1</sup>	2011/5/16 10:00	141	168hour00minutes	26 (0.2 $\mu$ Sv/h)
Hanawa Town Hall [33] (About76k mSouth/West)	2011/4/8 16:10	2011/5/9 10:10	195 <sup>*1</sup>	2011/5/16 10:10	237	168hour00minutes	42 (0.3 $\mu$ Sv/h)
Samegawa Village Hall [34] (About63k mSouth/West)	2011/4/8 14:05	2011/5/9 9:50	127 <sup>*1</sup>	2011/5/16 10:05	154	168hour15minutes	27 (0.2 $\mu$ Sv/h)
Aizuwakamatsu joint government building [35] (About97k mWest)	2011/4/13 16:33	2011/5/9 10:00	113 <sup>*1</sup>	2011/5/16 10:06	142	168hour06minutes	29 (0.2 $\mu$ Sv/h)
Kitakata City Hall [36] (About105k mWest/North/West)	2011/4/12 13:26	2011/5/9 10:00	117 <sup>*1</sup>	2011/5/16 10:00	147	168hour00minutes	30 (0.2 $\mu$ Sv/h)
Kita Shiobara Village Hall [37] (About100k mWest/North/West)	2011/4/12 12:03	2011/5/9 10:00	132 <sup>*1</sup>	2011/5/16 10:00	166	168hour00minutes	34 (0.2 $\mu$ Sv/h)
Nozawa Elementary School (Nishi Aizu Town) [38] (About124k mWest)	2011/4/13 11:51	2011/5/9 10:00	106 <sup>*1</sup>	2011/5/16 10:45	134	168hour45minutes	28 (0.2 $\mu$ Sv/h)
Bandai Town Hall [39] (About94k mWest)	2011/4/12 10:01	2011/5/9 10:00	144 <sup>*1</sup>		the equipment was broken		

\*1 Value measured by simple dosimeters (pocket dosimeters) .

Reading point (Distance from Fukushima Dai-ichi NPP)	Installation Date and Time	Date and Time (last monitoring) (x)	Readings (last monitoring) (a) ( $\mu$ Sv)	Monitoring Date and Time (y)	Reading of Integrated Dose (b) ( $\mu$ Sv)	Accumulated Time (z = y - x)	Reading of integrated Dose (c = b - a) ( $\mu$ Sv)
							Average does per hour (c / z)
Inawashiro Town Hall [40] (About83k mWest)	2011/4/12 10:53	2011/5/9 10:00	118 <sup>*1</sup>	2011/5/16 10:00	147	168hour00minutes	29 (0.2 $\mu$ Sv/h)
Aizubange Town Hall [41] (About108k mWest)	2011/4/23 11:43	2011/5/9 10:20	91 <sup>*1</sup>	2011/5/16 11:15	129	168hour55minutes	38 (0.2 $\mu$ Sv/h)
Yugawa Village Community Center [42] (About103k mWest)	2011/4/23 10:52	2011/5/9 10:00	155 <sup>*1</sup>	2011/5/16 10:00	221	168hour00minutes	66 (0.4 $\mu$ Sv/h)
Yanaizu Town Hall [43] (About117k mWest)	2011/4/14 9:57	2011/5/9 10:00	142 <sup>*1</sup>	2011/5/16 10:00	178	168hour00minutes	36 (0.2 $\mu$ Sv/h)
Mishima Town Hall [44] (About123k mWest)	2011/4/14 10:50	2011/5/9 10:00	113 <sup>*1</sup>	2011/5/16 16:25	145	174hour25minutes	32 (0.2 $\mu$ Sv/h)
Kaneyama Town Hall [45] (About133k mWest)	2011/4/14 11:47	2011/5/9 10:00	87 <sup>*1</sup>	2011/5/16 10:00	108	168hour00minutes	21 (0.1 $\mu$ Sv/h)
Shouwa Village Hall [46] (About126k mWest)	2011/4/14 13:48	2011/5/9 10:00	93 <sup>*1</sup>	2011/5/16 10:00	116	168hour00minutes	23 (0.1 $\mu$ Sv/h)
Aizumisato Town Hall Takada branch [47] (About105k mWest)	2011/4/14 15:27	2011/5/9 10:21	103 <sup>*1</sup>	2011/5/16 10:42	130	168hour21minutes	27 (0.2 $\mu$ Sv/h)
Minamiaizu joint government building [48] (About115k mWest/South/West)	2011/4/8 9:38	2011/5/9 10:00	93 <sup>*1</sup>	2011/5/16 10:00	111	168hour00minutes	18 (0.1 $\mu$ Sv/h)
Shimogou Town Hall [49] (About104k mWest)	2011/5/13 10:16	2011/5/13 10:16	0 <sup>*1</sup>	2011/5/16 10:31	6	72hour15minutes	6 (0.1 $\mu$ Sv/h)
Soma City Hall [50] (About43k mNorth/North/West)	2011/3/29 13:38	2011/5/9 10:04	667 <sup>*1</sup>	2011/5/16 9:55	740	167hour51minutes	73 (0.4 $\mu$ Sv/h)
Shinchi Town Hall [51] (About52k mNorth/North/West)	Under adjustment of the equipment						
Minamisoma City Kashima office [52] (About32k mNorth)	2011/3/29 15:40	2011/5/9 11:03	935 <sup>*1</sup>	2011/5/16 11:01	1056	167hour58minutes	121 (0.7 $\mu$ Sv/h)
Bajikouen [53] (About20k mNorth/West)	2011/3/29 16:50	2011/5/9 12:08	2239 <sup>*1</sup>	2011/5/16 11:42	2549	167hour34minutes	310 (1.9 $\mu$ Sv/h)
Ishigami junior high school(Minami Soma city) [54] (About25k mNorth/North/West)	2011/3/29 17:12	2011/5/9 12:22	1610 <sup>*1</sup>	2011/5/16 11:55	1825	167hour33minutes	215 (1.3 $\mu$ Sv/h)
Tsushima elementary school (Namie Town) [55] (About29k mNorth/West)	2011/3/30 11:40	2011/5/9 13:40	12000 <sup>*1</sup>	2011/5/16 13:29	13640	167hour49minutes	1640 (9.8 $\mu$ Sv/h)
Iwakioota Station [56] (About21k mNorth)	2011/3/29 16:22	2011/5/9 11:52	674 <sup>*1</sup>	2011/5/16 11:24	766	167hour32minutes	92 (0.5 $\mu$ Sv/h)
Minamisoma Town Hall [57] (About24k mNorth)	2011/3/30 15:10	2011/5/9 13:14	673 <sup>*1</sup>	2011/5/16 13:06	769	167hour52minutes	96 (0.6 $\mu$ Sv/h)
Iitate Village Hall [58] (About39k mNorth/West)	2011/3/30 13:20	2011/5/9 11:39	3870 <sup>*1</sup>	2011/5/16 11:22	4427	167hour43minutes	557 (3.3 $\mu$ Sv/h)
Yamakiya Post Office [59] (About38k mNorth/West)	2011/3/30 13:54	2011/5/9 13:55	2475 <sup>*1</sup>	2011/5/16 12:56	2810	167hour01minutes	335 (2.0 $\mu$ Sv/h)
Katsurao Village Hall [60] (About25k mWest)	2011/3/30 12:20	2011/5/9 13:58	1743 <sup>*1</sup>	2011/5/16 13:48	1991	167hour50minutes	248 (1.5 $\mu$ Sv/h)
Futatsu-numa Park [61] (About24k mSouth)	2011/4/1 15:30	2011/5/9 12:35	835 <sup>*1</sup>	2011/5/16 12:40	931	168hour05minutes	96 (0.6 $\mu$ Sv/h)
Iwaki joint government building* [62] (About43k mSouth/South/West)	2011/3/30 13:00	2011/5/9 10:00	484 <sup>*1</sup>	2011/5/16 10:00	531	168hour00minutes	47 (0.3 $\mu$ Sv/h)

\*1 Value measured by simple dosimeters (pocket dosimeters) .

Reading point (Distance from Fukushima Dai-ichi NPP)	Installation Date and Time	Date and Time (last monitoring) (x)	Readings (last monitoring) (a) ( $\mu$ Sv)	Monitoring Date and Time (y)	Reading of Integrated Dose (b) ( $\mu$ Sv)	Accumulated Time (z = y - x)	Reading of integrated Dose (c = b - a) ( $\mu$ Sv)
							Average does per hour (c / z)
Iwaki city Nakoso Branch Office [63] (About611 mSouth/South/West)	2011/4/1 12:35	2011/5/9 10:25	181 <sup>**1</sup>	2011/5/16 10:22	203	167hour57minutes	22 (0.1 $\mu$ Sv/h)
Kawamae Station [64] (About35 k mSouth/West)	2011/4/1 16:50	2011/5/9 13:45	306 <sup>**1</sup>	2011/5/16 14:04	343	168hour19minutes	37 (0.2 $\mu$ Sv/h)
Yumoto High School [65] (About51 k mSouth)	2011/4/1 14:10	2011/5/9 11:05	459 <sup>**1</sup>	2011/5/16 11:01	528	167hour56minutes	69 (0.4 $\mu$ Sv/h)
Kairyu no Sato Center [66] (About28 k mSouth)	2011/4/1 15:10	2011/5/9 12:10	679 <sup>**1</sup>	2011/5/16 12:20	753	168hour10minutes	74 (0.4 $\mu$ Sv/h)

Notes)

·Reading by : Fukushima Pref.(Emergency Monitoring Unit)

·Sampling point : 1m from ground

·The figures of 0.0 in the column "Date and Time (last monitoring)" indicate that there was new instalation in the area.

·Values measured by simple dosimeters (pocket dosimeters) do not correspond to accumulated air dose rates measured by survey meters at the same reading posts due to the characteristics of measurement devices, etc.

·For Bandai Town Hall[Pref. 39], the equipment was broken, so it will be replaced.

·For Shimogou Town Hall[Pref. 49], The equipment was under adjustment because the readings are unstable. However, the equipment was replaced, and measurement has commenced from May 13 onwards.

·Regarding Shinchi Town Hall [pref. 51], measurement devices are being adjusted because the readings are not stable.

# Readings of Fukushima Pref. Air Dose Rate (Northern part ,Midland, South,Aizu, South Aizu)

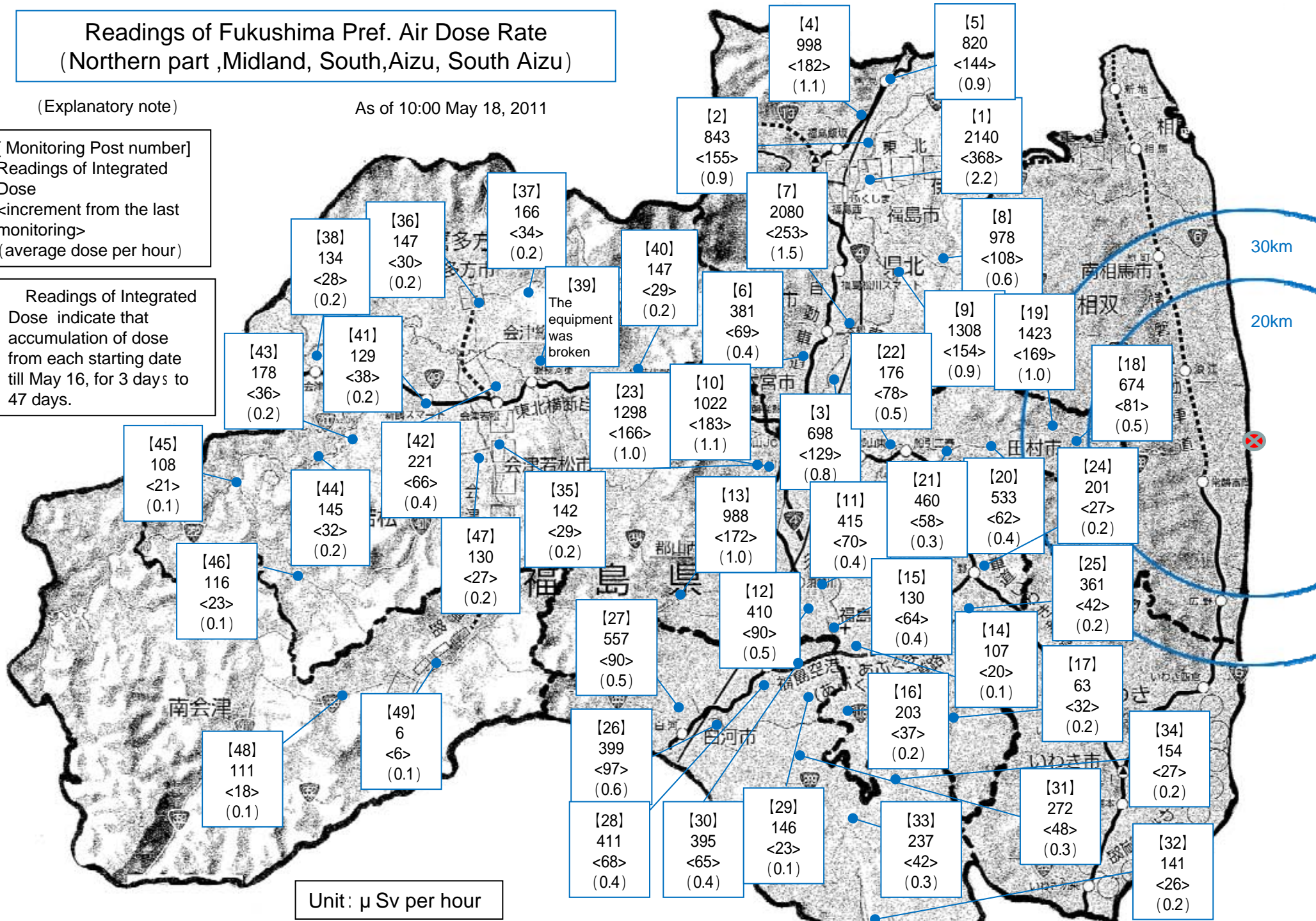
(Explanatory note)

As of 10:00 May 18, 2011

[ Monitoring Post number]  
Readings of Integrated  
Dose

<increment from the last  
monitoring>  
(average dose per hour)

Readings of Integrated  
Dose indicate that  
accumulation of dose  
from each starting date  
till May 16, for 3 days to  
47 days.



Unit: μSv per hour

# Readings of Fukushima Pref. Air Dose Rate (Sousou, Iwaki)

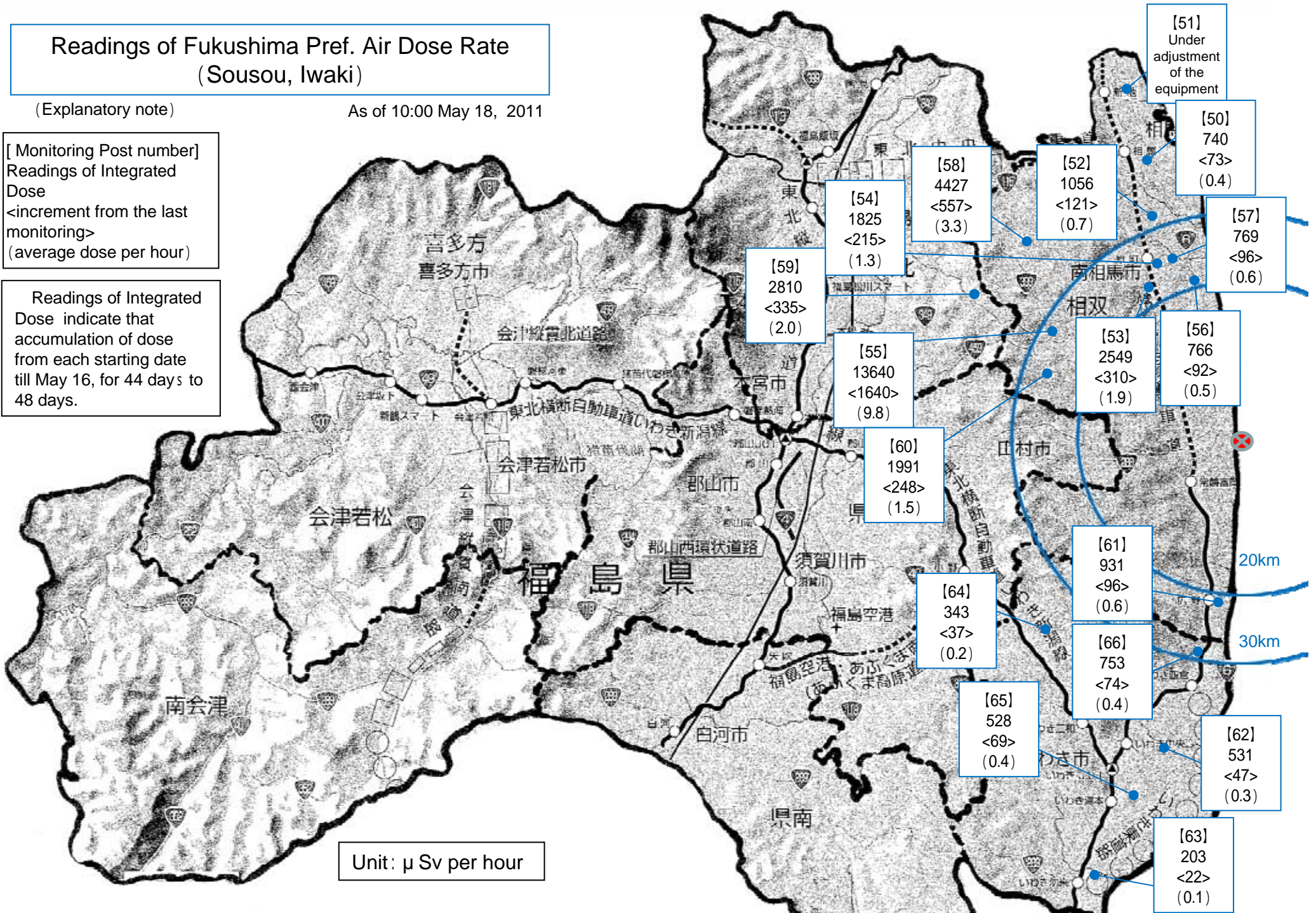
(Explanatory note)

As of 10:00 May 18, 2011

[ Monitoring Post number ]  
Readings of Integrated  
Dose  
<increment from the last  
monitoring>  
(average dose per hour)

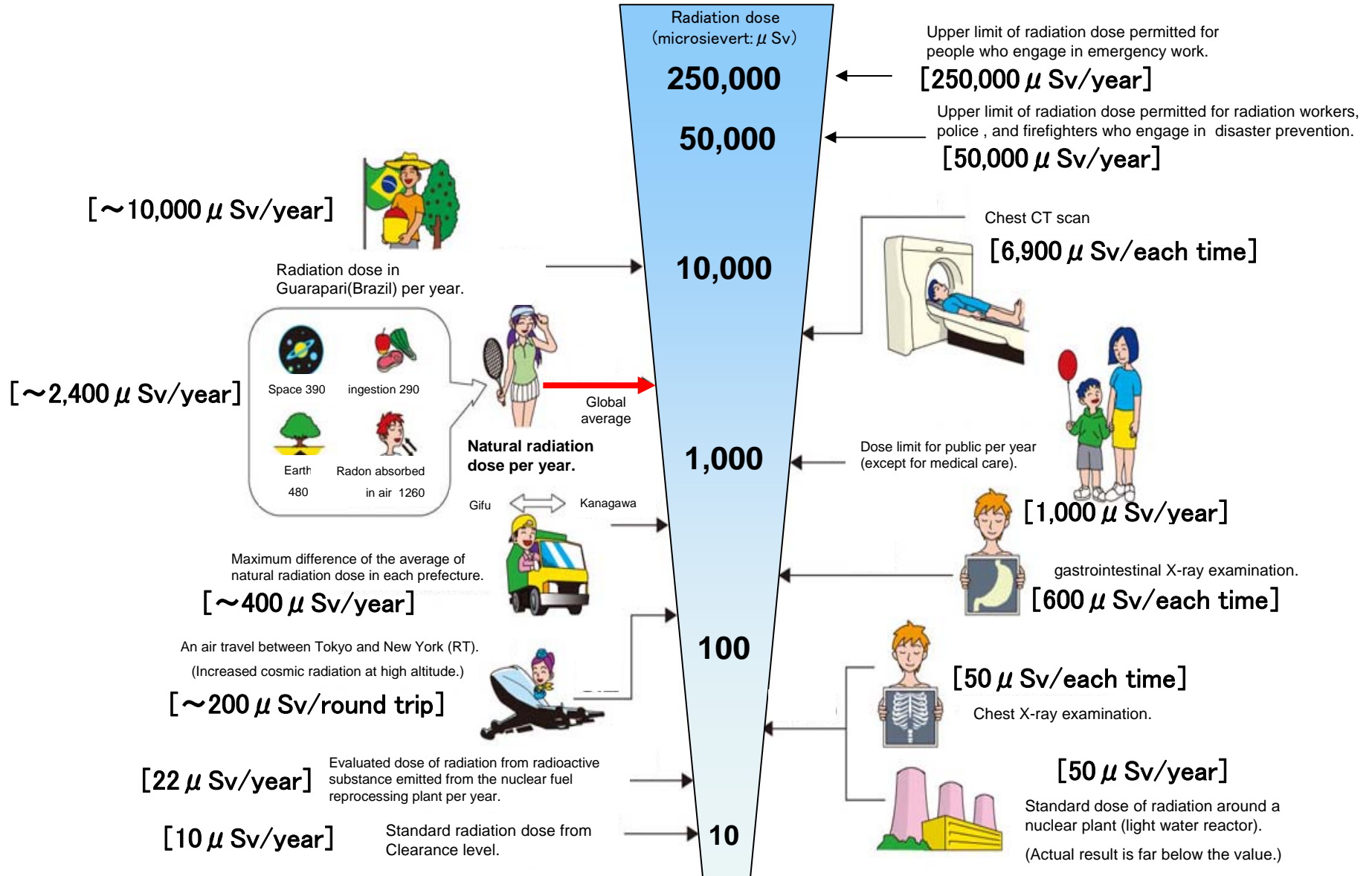
Readings of Integrated  
Dose indicate that  
accumulation of dose  
from each starting date  
till May 16, for 44 days to  
48 days.

Unit:  $\mu$  Sv per hour



# Radiation in Daily-life

※Unit :  $\mu\text{Sv}$



※ Sv [Sievert] = Constant of organism effect by kind of radiation (※) × Gy [gray]

※ It is 1 in case of X ray and  $\gamma$  ray.