

Readings of Air Dose Rate in Fukushima Pref..(Report No.4)

As of 14:00 May 3,2011

*** 1 the readings are measured by pocket dosimeter**

Sampling Point (Distance from Fukushima Dai-ichi NPP)	Installation Date and Time	Date and Time (last monitoring) (x)	Readings (last monitoring) (a) (μ Sv)	Monitoring Date and Time (y)	Reading of Integrated Dose (b) (μ Sv)	Accumulated Time (z = y - x)	Reading of integrated Dose (c = b - a)
							Average does per hour (c/z)
Northern part's health and welfare office [1] (About61kmNorthWest)	2011/4/11 10:40	2011/4/25 10:15	968 ^{**1}	2011/5/2 10:00	1376 ^{**1}	167h45mn	408 (2.4 μ Sv/h)
Date City Hall [2] (About62kmWestNorthWest)	2011/4/11 14:30	2011/4/25 10:00	361 ^{**1}	2011/5/2 12:30	530 ^{**1}	170h30mn	169 (1.0 μ Sv/h)
Motomiya City Hall [3] (About57kmWest)	2011/4/12 10:55	2011/4/25 10:40	291 ^{**1}	2011/5/2 10:00	434 ^{**1}	167h20mn	143 (0.9 μ Sv/h)
Fukushima Northern Police Station Koori branch [4] (About62kmNorthWest)	2011/4/12 10:00	2011/4/25 10:07	424 ^{**1}	2011/5/2 10:30	623 ^{**1}	168h23mn	199 (1.2 μ Sv/h)
Kunimi Town Hall [5] (About61kmNorthWest)	2011/4/11 15:20	2011/4/25 10:00	368 ^{**1}	2011/5/2 10:00	521 ^{**1}	168h00mn	153 (0.9 μ Sv/h)
Ootama Village Hall [6] (About60kmWestNorthWest)	2011/4/12 10:30	2011/4/25 10:33	161 ^{**1}	2011/5/2 8:30	239 ^{**1}	165h57mn	78 (0.5 μ Sv/h)
Nihonmatsu City Hall [7] (About56kmWestNorthWest)	2011/3/30 10:27	2011/4/25 11:22	1299 ^{**1}	2011/5/2 9:48	1562 ^{**1}	166h26mn	263 (1.6 μ Sv/h)
Kawamata Town Hall [8] (About47kmWestNorthWest)	2011/3/30 11:10	2011/4/25 10:52	637 ^{**1}	2011/5/2 10:18	754 ^{**1}	167h26mn	117 (0.7 μ Sv/h)
Fukushima City lino branch office [9] (About51kmNorthWest)	2011/3/30 10:32	2011/4/25 16:26	826 ^{**1}	2011/5/2 16:38	995 ^{**1}	168h12mn	169 (1.0 μ Sv/h)
Kooriyama Joint government building [10] (About58kmWest)	2011/4/10 10:00	2011/4/25 10:00	460 ^{**1}	2011/5/2 10:00	652 ^{**1}	168h00mn	192 (1.1 μ Sv/h)
Sugakawa City Hall [11] (About60kmWestSouthWest)	2011/4/10 10:20	2011/4/25 10:00	194 ^{**1}	2011/5/2 10:00	274 ^{**1}	168h00mn	80 (0.5 μ Sv/h)
Kagamiishi Town Hall [12] (About64kmWestSouthWest)	2011/4/10 11:00	2011/4/25 10:00	160 ^{**1}	2011/5/2 10:00	238 ^{**1}	168h00mn	78 (0.5 μ Sv/h)
Tenei Village Hall [13] (About72kmWestSouthWest)	2011/4/10 11:54	2011/4/25 13:00	450 ^{**1}	2011/5/2 10:38	635 ^{**1}	165h38mn	185 (1.1 μ Sv/h)
Ishikawa Town Hall [14] (About60kmWestSouthWest)	2011/4/11 16:51	2011/4/25 12:00	45 ^{**1}	2011/5/2 11:00	67 ^{**1}	167h00mn	22 (0.1 μ Sv/h)
Tamakawa Village Hall [15] (About60kmWestSouthWest)	Under adjustment of the equipment						
Asakawa Town Hall [16] (About67kmSouthWest)	2011/4/10 15:30	2011/4/25 10:00	88 ^{**1}	2011/5/2 10:35	123 ^{**1}	168h35mn	35 (0.2 μ Sv/h)

* 1 the readings are measured by pocket dosimeter

Sampling Point (Distance from Fukushima Dai-ichi NPP)	Installation Date and Time	Date and Time (last monitoring) (x)	Readings (last monitoring) (a) (μ Sv)	Monitoring Date and Time (y)	Reading of Integrated Dose (b) (μ Sv)	Accumulated Time (z = y - x)	Reading of integrated Dose (c = b - a)
							Average does per hour (c/z)
Furudono Town Hall [17] (About56kmSouthWest)	Under adjustment of the equipment						
Tamura City Miyakoji Administration Bureau [18] (About21kmWest)	2011/3/30 13:00	2011/4/25 14:48	422 ^{**1}	2011/5/2 15:12	503 ^{**1}	168h24mn	81 (0.5 μ Sv/h)
Iwaisawa Elementary School [19] (About27kmWest)	2011/3/30 13:20	2011/4/25 15:00	894 ^{**1}	2011/5/2 15:24	1077 ^{**1}	168h24mn	183 (1.1 μ Sv/h)
Tokiwa Administration Bureau [20] (About35kmWest)	2011/3/30 14:20	2011/4/25 15:19	333 ^{**1}	2011/5/2 15:38	403 ^{**1}	168h19mn	70 (0.4 μ Sv/h)
Tamura City Hall [21] (About41kmWest)	2011/3/30 12:05	2011/4/25 13:53	277 ^{**1}	2011/5/2 11:14	340 ^{**1}	165h21mn	63 (0.4 μ Sv/h)
Miharu Town Hall [22] (About48kmWest)	Under adjustment of the equipment						
Environment Center [23] (About60kmWest)	2011/3/30 16:08	2011/4/25 10:00	785 ^{**1}	2011/5/2 10:00	962 ^{**1}	168h00mn	177 (1.1 μ Sv/h)
Ono Town Hall [24] (About39kmWestSouthWest)	2011/3/30 10:56	2011/4/25 11:25	120 ^{**1}	2011/5/2 11:05	148 ^{**1}	167h40mn	28 (0.2 μ Sv/h)
Hirata Village Hall [25] (About47kmWestSouthWest)	2011/4/1 17:40	2011/4/25 15:14	221 ^{**1}	2011/5/2 16:14	272 ^{**1}	169h00mn	51 (0.3 μ Sv/h)
Shirakawa joint government Hall [26] (About81kmSouthWest)	2011/4/18 14:17	2011/4/25 10:40	103 ^{**1}	2011/5/2 10:30	205 ^{**1}	167h50mn	102 (0.6 μ Sv/h)
Nishigou Village Hall [27] (About84kmWestSouthWest)	2011/4/7 15:30	2011/4/25 10:40	277 ^{**1}	2011/5/2 13:50	376 ^{**1}	171h10mn	99 (0.6 μ Sv/h)
Izumizaki Village Hall [28] (About72kmWestSouthWest)	2011/4/7 17:40	2011/4/25 10:00	203 ^{**1}	2011/5/2 10:50	273 ^{**1}	168h50mn	70 (0.4 μ Sv/h)
Nakajima Village Hall [29] (About68kmWestSouthWest)	2011/4/7 17:10	2011/4/25 8:30	72 ^{**1}	2011/5/2 10:00	97 ^{**1}	169h30mn	25 (0.1 μ Sv/h)
Yabuki Town Hall [30] (About66kmWestSouthWest)	2011/4/7 16:40	2011/4/25 10:00	193 ^{**1}	2011/5/2 10:00	263 ^{**1}	168h00mn	70 (0.4 μ Sv/h)
Tanagura Town Hall [31] (About73kmWestSouthWest)	2011/4/8 16:45	2011/4/25 10:40	126 ^{**1}	2011/5/2 11:00	176 ^{**1}	168h20mn	50 (0.3 μ Sv/h)
Yamatsuri Town Hall [32] (About82kmSouthWest)	2011/4/8 15:40	2011/4/25 10:00	63 ^{**1}	2011/5/2 10:00	90 ^{**1}	168h00mn	27 (0.2 μ Sv/h)
Hanawa Town Hall [33] (About76kmSouthWest)	2011/4/8 16:10	2011/4/25 10:30	109 ^{**1}	2011/5/2 10:00	153 ^{**1}	167h30mn	44 (0.3 μ Sv/h)
Samegawa Village Hall [34] (About63kmSouthWest)	2011/4/8 14:05	2011/4/25 9:46	72 ^{**1}	2011/5/2 10:08	100 ^{**1}	168h22mn	28 (0.2 μ Sv/h)
Aizuwakamatsu joint government building [35] (About97kmWest)	2011/4/13 16:33	2011/4/25 10:00	52 ^{**1}	2011/5/2 10:00	83 ^{**1}	168h00mn	31 (0.2 μ Sv/h)
Kitakata City Hall [36] (About105kmWestNorthWest)	2011/4/12 13:26	2011/4/25 10:00	63 ^{**1}	2011/5/2 10:00	88 ^{**1}	168h00mn	25 (0.1 μ Sv/h)
Kita Shiobara Village Hall [37] (About100kmWestNorthWest)	2011/4/12 12:03	2011/4/25 10:30	65 ^{**1}	2011/5/2 10:30	99 ^{**1}	168h00mn	34 (0.2 μ Sv/h)
Nozawa Elementary School (Nishi Aizu Town) [38] (About124kmWest)	2011/4/13 11:51	2011/4/25 10:00	49 ^{**1}	2011/5/2 10:00	78 ^{**1}	168h00mn	29 (0.2 μ Sv/h)
Bandai Town Hall [39] (About94kmWest)	2011/4/12 10:01	2011/4/25 10:00	71 ^{**1}	2011/5/2 10:00	107 ^{**1}	168h00mn	36 (0.2 μ Sv/h)

* 1 the readings are measured by pocket dosimeter

Sampling Point (Distance from Fukushima Dai-ichi NPP)	Installation Date and Time	Date and Time (last monitoring) (x)	Readings (last monitoring) (a) (μ Sv)	Monitoring Date and Time (y)	Reading of Integrated Dose (b) (μ Sv)	Accumulated Time (z = y - x)	Reading of integrated Dose (c = b - a)
							Average does per hour (c/z)
Inawashiro Town Hall [40] (About83k mWest)	2011/4/12 10:53	2011/4/25 10:00	56 ^{**1}	2011/5/2 10:00	88 ^{**1}	168h00mn	32 (0.2 μ Sv/h)
Aizubange Town Hall [41] (About108k mWest)	2011/4/23 11:43	2011/4/25 10:00	10 ^{**1}	2011/5/2 10:00	51 ^{**1}	168h00mn	41 (0.2 μ Sv/h)
Yugawa Village Community Center [42] (About103k mWest)	2011/4/23 10:52	2011/4/25 11:00	19 ^{**1}	2011/5/2 10:00	87 ^{**1}	167h00mn	68 (0.4 μ Sv/h)
Yanaizu Town Hall [43] (About117k mWest)	2011/4/14 9:57	2011/4/25 10:00	64 ^{**1}	2011/5/2 10:00	103 ^{**1}	168h00mn	39 (0.2 μ Sv/h)
Mishima Town Hall [44] (About123k mWest)	2011/4/14 10:50	2011/4/25 10:00	51 ^{**1}	2011/5/2 10:00	82 ^{**1}	168h00mn	31 (0.2 μ Sv/h)
Kaneyama Town Hall [45] (About133k mWest)	2011/4/14 11:47	2011/4/25 10:00	40 ^{**1}	2011/5/2 10:00	64 ^{**1}	168h00mn	24 (0.1 μ Sv/h)
Shouwa Village Hall [46] (About126k mWest)	2011/4/14 13:48	2011/4/25 9:55	41 ^{**1}	2011/5/2 10:00	67 ^{**1}	168h05mn	26 (0.2 μ Sv/h)
Aizumisato Town Hall Takada branch [47] (About105k mWest)	2011/4/14 15:27	2011/4/25 10:17	46 ^{**1}	2011/5/2 10:20	75 ^{**1}	168h03mn	29 (0.2 μ Sv/h)
Minamiaizu joint government building [48] (About115k mWestSouthWest)	2011/4/8 9:38	2011/4/25 10:00	54 ^{**1}	2011/5/2 10:00	75 ^{**1}	168h00mn	21 (0.1 μ Sv/h)
Shimogou Town Hall [49] (About104k mWest)	Under adjustment of the equipment						
Souma City Hall [50] (About43k mNorthNorthWest)	2011/3/29 13:38	2011/4/25 10:10	506 ^{**1}	2011/5/2 10:53	592 ^{**1}	168h43mn	86 (0.5 μ Sv/h)
Shinchi Town Hall [51] (About52k mNorthNorthWest)	Under adjustment of the equipment						
Minamisouma City Kashima office [52] (About32k mNorth)	2011/3/29 15:40	2011/4/25 11:16	671 ^{**1}	2011/5/2 11:59	807 ^{**1}	168h43mn	136 (0.8 μ Sv/h)
Bajikouen [53] (About20k mNorthWest)	2011/3/29 16:50	2011/4/25 12:22	1582 ^{**1}	2011/5/2 13:02	1918 ^{**1}	168h40mn	336 (2.0 μ Sv/h)
Ishigami junior high school(Minami Soma city) [54] (About25k mNorthNorthWest)	2011/3/29 17:12	2011/4/25 12:48	1154 ^{**1}	2011/5/2 13:16	1388 ^{**1}	168h28mn	234 (1.4 μ Sv/h)
Tsushima elementary school (Namie Town) [55] (About29k mNorthWest)	2011/3/30 11:40	2011/4/25 14:10	8550 ^{**1}	2011/5/2 14:36	10300 ^{**1}	168h26mn	1750 (10.4 μ Sv/h)
Iwakioota Station [56] (About21k mNorth)	2011/3/29 16:22	2011/4/25 12:07	483 ^{**1}	2011/5/2 12:48	581 ^{**1}	168h41mn	98 (0.6 μ Sv/h)
Minamisouma Town Hall [57] (About24k mNorth)	2011/3/30 15:10	2011/4/25 14:59	472 ^{**1}	2011/5/2 13:45	575 ^{**1}	166h46mn	103 (0.6 μ Sv/h)
Iitate Village Hall [58] (About39k mNorthWest)	2011/3/30 13:20	2011/4/25 13:06	2700 ^{**1}	2011/5/2 11:48	3286 ^{**1}	166h42mn	586 (3.5 μ Sv/h)
Yamakiya Post Office [59] (About38k mNorthWest)	2011/3/30 13:54	2011/4/25 16:21	1738 ^{**1}	2011/5/2 12:25	2106 ^{**1}	164h04mn	368 (2.2 μ Sv/h)
Katsurao Village Hall [60] (About25k mWest)	2011/3/30 12:20	2011/4/25 14:30	1286 ^{**1}	2011/5/2 14:52	1480 ^{**1}	168h22mn	194 (1.2 μ Sv/h)
Futatsu-numa Park [61] (About24k mSouth)	2011/4/1 15:30	2011/4/25 13:06	604 ^{**1}	2011/5/2 13:35	724 ^{**1}	168h29mn	120 (0.7 μ Sv/h)
Iwaki joint government building [62] (About43k mSouthSouthWest)	2011/3/30 13:00	2011/4/25 10:00	378 ^{**1}	2011/5/2 10:00	433 ^{**1}	168h00mn	55 (0.3 μ Sv/h)

*** 1 the readings are measured by pocket dosimeter**

Sampling Point (Distance from Fukushima Dai-ichi NPP)	Installation Date and Time	Date and Time (last monitoring) (x)	Readings (last monitoring) (a) (μ Sv)	Monitoring Date and Time (y)	Reading of Integrated Dose (b) (μ Sv)	Accumulated Time ($z = y - x$)	Reading of integrated Dose ($c = b - a$)
							Average does per hour (c/z)
Iwaki city Nakoso Branch Office [63] (About61 k m SouthSouthWest)	2011/4/1 12:35	2011/4/25 10:40	132 ^{**1}	2011/5/2 11:16	157 ^{**1}	168h36mn	25 (0.1 μ Sv/h)
Kawamae Station [64] (About35 k m SouthWest)	2011/4/1 16:50	2011/4/25 14:35	221 ^{**1}	2011/5/2 15:20	265 ^{**1}	168h45mn	44 (0.3 μ Sv/h)
Yumoto High School [65] (About51 k m South)	2011/4/1 14:10	2011/4/25 11:20	314 ^{**1}	2011/5/2 11:56	389 ^{**1}	168h36mn	75 (0.4 μ Sv/h)
Kairyu no Sato Center [66] (About28 k m South)	2011/4/1 15:10	2011/4/25 12:30	513 ^{**1}	2011/5/2 13:08	599 ^{**1}	168h38mn	86 (0.5 μ Sv/h)

Notes)

- Reading by : Fukushima Pref. (Emergency Monitoring Unit)
- Sampling point : 1m from ground
- The figures of 0.0 in the column "Date and Time (last monitoring)" indicate that there was new installation in the area.
- Measurements by pocket dosimeters and integrated values of readings with survey meters for the air dose rate (at the same point) are not always same due to those devices' characteristics.
- [15] [17] [22] [49] [51] : The equipment is under adjustment because the readings are unstable.
- The number of Sampling Point used to be described as [Pref.#] in Report No.1&No.2 is changed to as [#] by Report No.3. (#:Numeric Character)

Readings of Fukushima Pref. Air Dose Rate (Northern part ,Midland, South,Aizu, South Aizu)

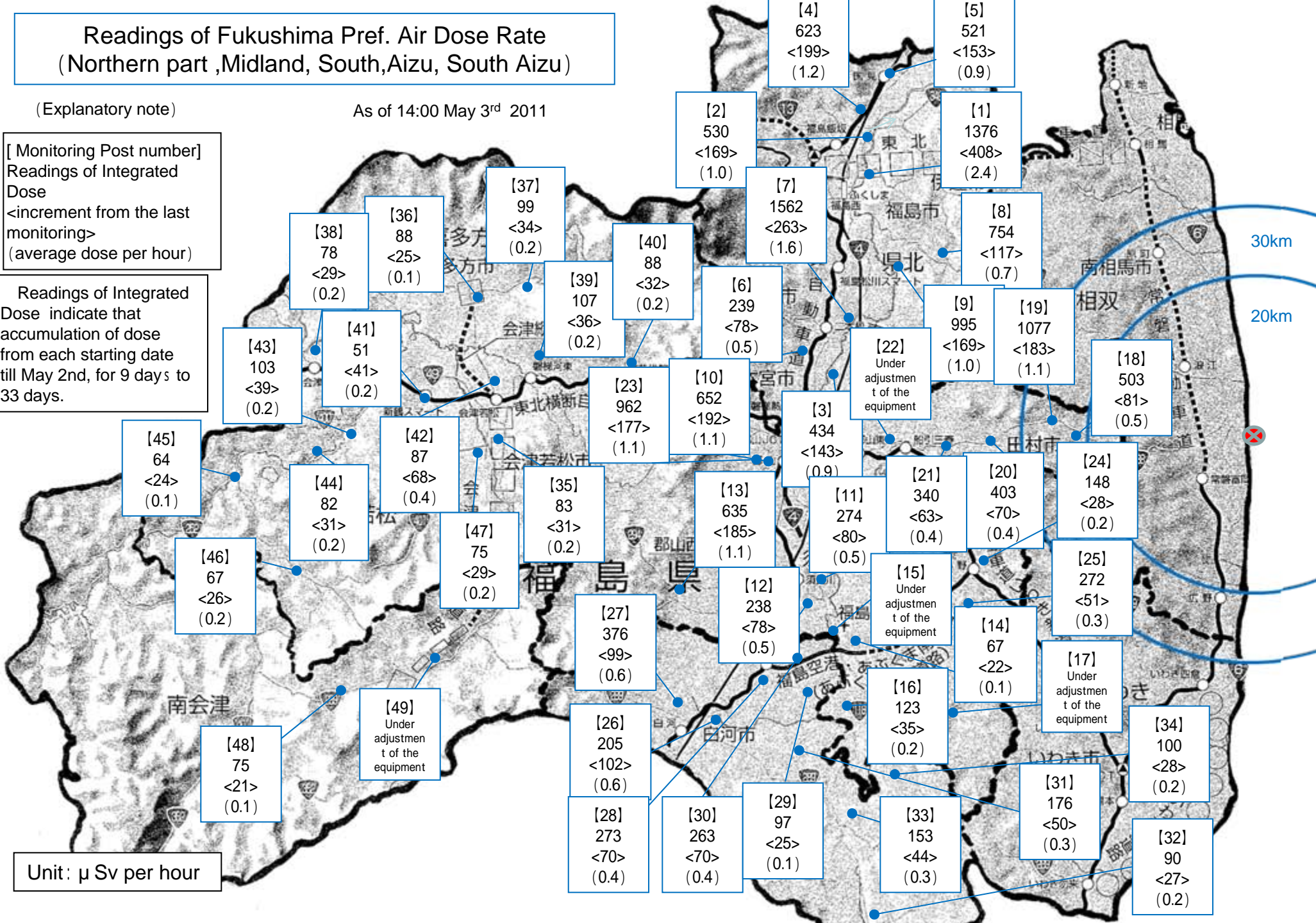
(Explanatory note)

As of 14:00 May 3rd 2011

[Monitoring Post number]
Readings of Integrated
Dose
<increment from the last
monitoring>
(average dose per hour)

Readings of Integrated
Dose indicate that
accumulation of dose
from each starting date
till May 2nd, for 9 days to
33 days.

Unit : μ Sv per hour



Readings of Fukushima Pref. Air Dose Rate (Sousou, Iwaki)

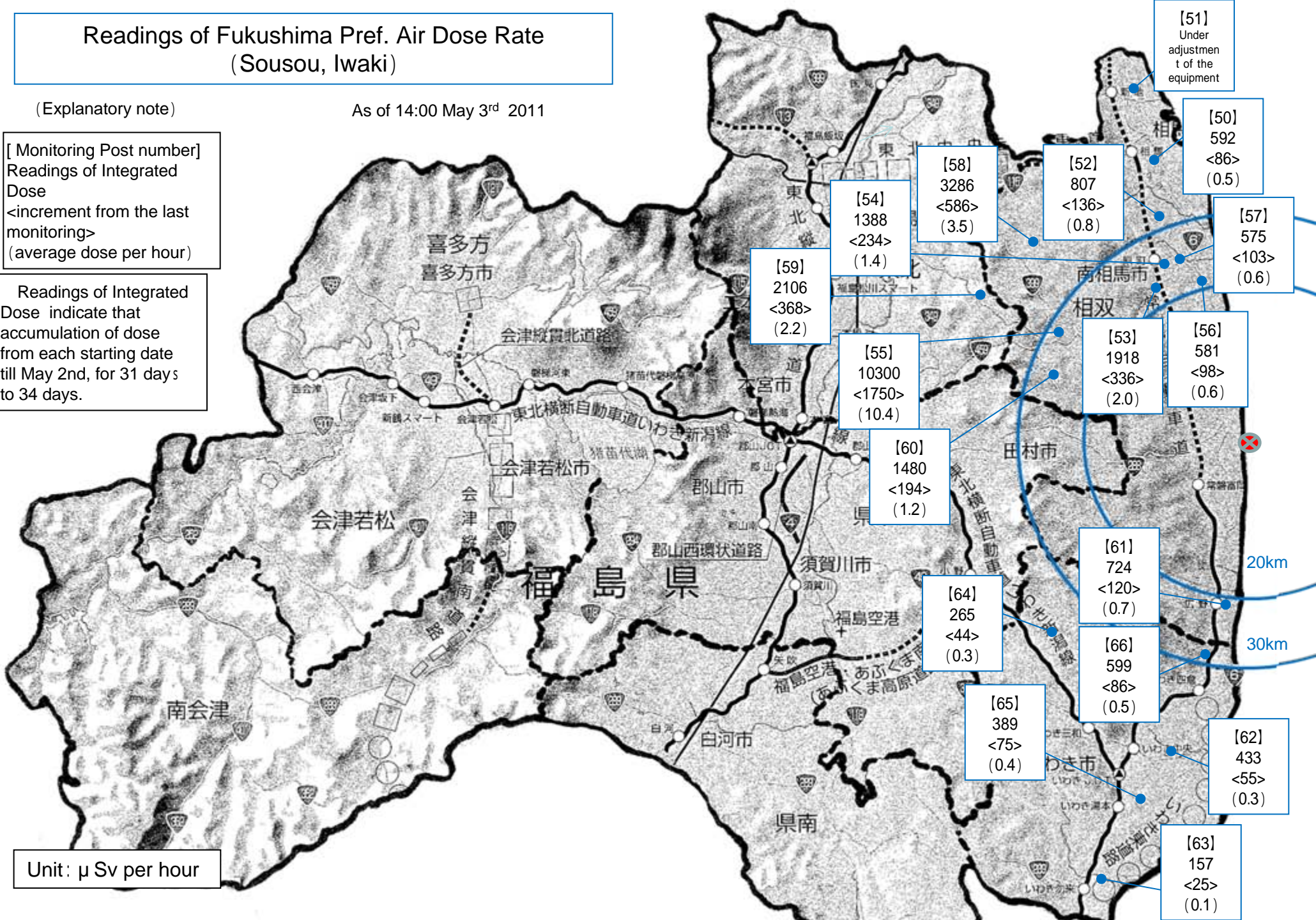
(Explanatory note)

As of 14:00 May 3rd 2011

[Monitoring Post number]
Readings of Integrated
Dose
<increment from the last
monitoring>
(average dose per hour)

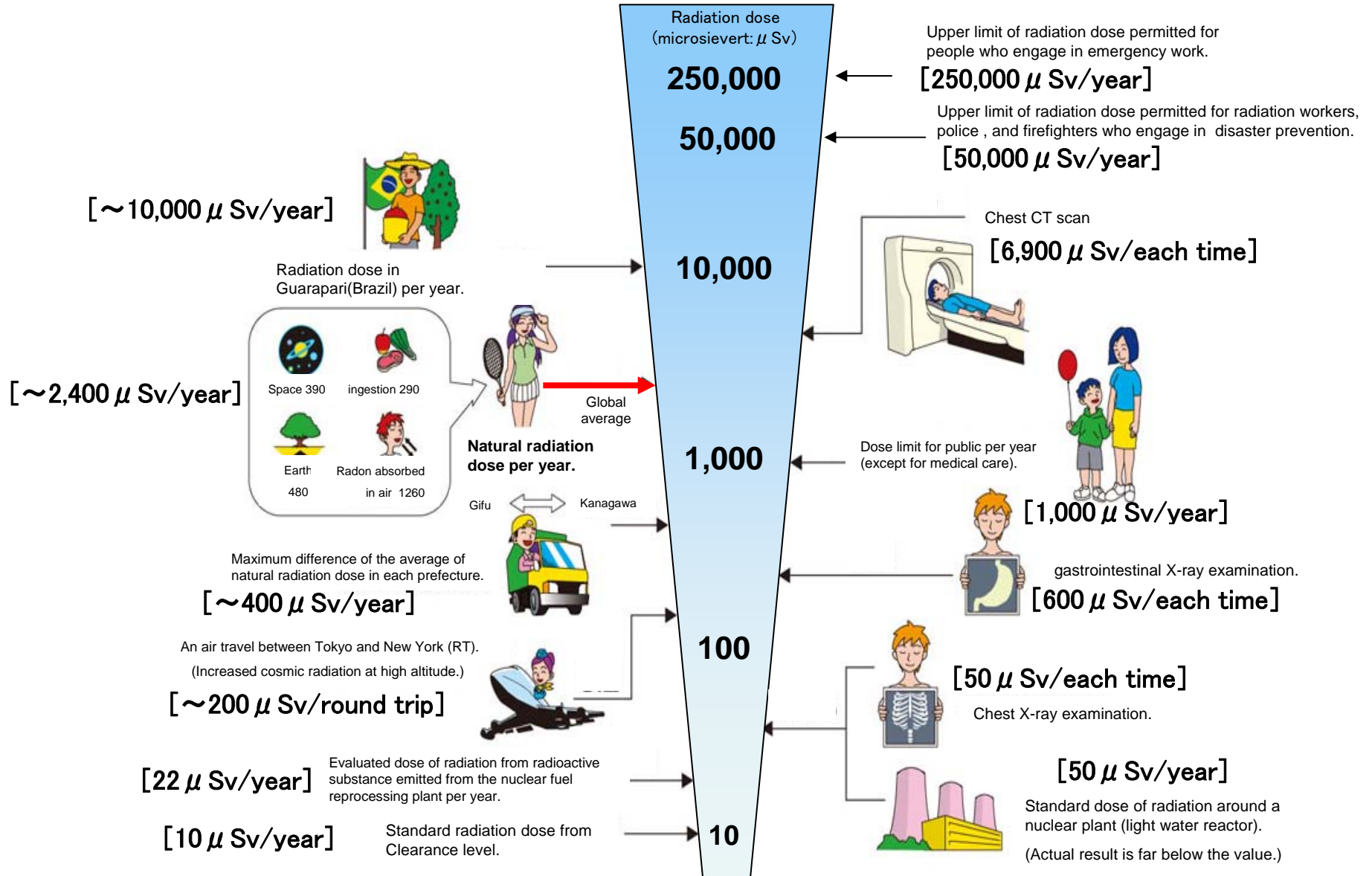
Readings of Integrated
Dose indicate that
accumulation of dose
from each starting date
till May 2nd, for 31 days
to 34 days.

Unit: μ Sv per hour



Radiation in Daily-life

※Unit : μSv



※ Sv [Sievert] = Constant of organism effect by kind of radiation (※) × Gy [gray]

※ It is 1 in case of X ray and γ ray.