

## Readings of Air Dose Rate in Fukushima Pref..(Report No.2)

As of 16:00 April 19,2011

**\*1 Value measured by simple dosimeters (pocket dosimeters)**

Sampling Point (Distance from Fukushima Dai-ichi NPP)	Installation Date and Time	Date and Time (last monitoring) (x)	Readings (last monitoring) (a) ( $\mu$ Sv)	Monitoring Date and Time (y)	Reading of Integrated Dose (b) ( $\mu$ Sv)	Accumulated Time (z = y - x)	Reading of integrated Dose (c = b - a)
							Average does per hour (c/z)
Northern part's health and welfare office [Pref.1] (About61kmNorthWest)	2011/4/11 10:40	2011/4/11 10:40	0 <sup>**1</sup>	2011/4/18 10:30	497 <sup>**1</sup>	167h50minutes	497 (3.0 $\mu$ Sv/h)
Date City Hall [Pref.2] (About62kmWestNorthWest)	2011/4/11 14:30	2011/4/11 14:30	0 <sup>**1</sup>	2011/4/18 10:00	184 <sup>**1</sup>	163h30minutes	184 (1.1 $\mu$ Sv/h)
Motomiya City Hall [Pref.3] (About57kmWest)	2011/4/12 10:55	2011/4/12 10:55	0 <sup>**1</sup>	2011/4/18 10:00	136 <sup>**1</sup>	143h05minutes	136 (1.0 $\mu$ Sv/h)
Fukushima Northern Police Station Koori branch [Pref.4] (About62kmNorthWest)	2011/4/12 10:00	2011/4/12 10:00	0 <sup>**1</sup>	2011/4/18 15:25	211 <sup>**1</sup>	149h25minutes	211 (1.4 $\mu$ Sv/h)
Kunimi Town Hall [Pref.5] (About61kmNorthWest)	2011/4/11 15:20	2011/4/11 15:20	0 <sup>**1</sup>	2011/4/18 10:00	188 <sup>**1</sup>	162h40minutes	188 (1.2 $\mu$ Sv/h)
Ootama Village Hall [Pref.6] (About60kmWestNorthWest)	2011/4/12 10:30	2011/4/12 10:30	0 <sup>**1</sup>	2011/4/18 10:00	75 <sup>**1</sup>	143h30minutes	75 (0.5 $\mu$ Sv/h)
Nihonmatsu City Hall [Pref.7] (About56kmWestNorthWest)	2011/3/30 10:27	2011/4/11 10:07	693 <sup>**1</sup>	2011/4/18 10:15	1000 <sup>**1</sup>	168h08minutes	307 (1.8 $\mu$ Sv/h)
Kawamata Town Hall [Pref.8] (About47kmWestNorthWest)	2011/3/30 11:10	2011/4/11 10:43	398 <sup>**1</sup>	2011/4/18 10:05	496 <sup>**1</sup>	167h22minutes	98 (0.6 $\mu$ Sv/h)
Fukushima City lino branch office [Pref.9] (About51kmNorthWest)	2011/3/30 10:32	2011/4/11 17:33	436 <sup>**1</sup>	2011/4/18 17:37	635 <sup>**1</sup>	168h04minutes	199 (1.2 $\mu$ Sv/h)
Kooriyama Joint government building [Pref.10] (About58kmWest)	2011/4/10 10:00	2011/4/11 10:00	33 <sup>**1</sup>	2011/4/18 10:00	251 <sup>**1</sup>	168h00minutes	218 (1.3 $\mu$ Sv/h)
Sugakawa City Hall [Pref.11] (About60kmWestSouthWest)	2011/4/10 10:20	2011/4/11 10:00	13 <sup>**1</sup>	2011/4/18 10:00	107 <sup>**1</sup>	168h00minutes	94 (0.6 $\mu$ Sv/h)
Kagamiishi Town Hall [Pref.12] (About64kmWestSouthWest)	2011/4/10 11:00	2011/4/11 10:00	10 <sup>**1</sup>	2011/4/18 10:00	86 <sup>**1</sup>	168h00minutes	76 (0.5 $\mu$ Sv/h)
Tenei Village Hall [Pref.13] (About72kmWestSouthWest)	2011/4/10 11:54	2011/4/11 10:00	29 <sup>**1</sup>	2011/4/18 10:00	246 <sup>**1</sup>	168h00minutes	217 (1.3 $\mu$ Sv/h)
Ishikawa Town Hall [Pref.14] (About60kmWestSouthWest)	2011/4/11 16:51	2011/4/11 16:51	0 <sup>**1</sup>	2011/4/18 10:00	22 <sup>**1</sup>	161h09minutes	22 (0.1 $\mu$ Sv/h)
Tamakawa Village Hall [Pref.15] (About60kmWestSouthWest)	setting up the equipment						
Asakawa Town Hall [Pref.16] (About67kmSouthWest)	2011/4/10 15:30	2011/4/11 10:00	5 <sup>**1</sup>	2011/4/18 10:00	48 <sup>**1</sup>	168h00minutes	43 (0.3 $\mu$ Sv/h)

**\*1 Value measured by simple dosimeters (pocket dosimeters)**

Sampling Point (Distance from Fukushima Dai-ichi NPP)	Installation Date and Time	Date and Time (last monitoring) (x)	Readings (last monitoring) (a) ( $\mu$ Sv)	Monitoring Date and Time (y)	Reading of Integrated Dose (b) ( $\mu$ Sv)	Accumulated Time (z = y - x)	Reading of integrated Dose (c = b - a)
							Average does per hour (c/z)
Furudono Town Hall [Pref.17] (About56 k mSouthWest)	setting up the equipment						
Tamura City Miyakoji Administration Bureau [Pref.18] (About21 k mWest)	2011/3/30 13:00	2011/4/11 15:42	229 <sup>*1</sup>	2011/4/18 15:45	330 <sup>*1</sup>	168h03minutes	101 (0.6 $\mu$ Sv/h)
Iwaisawa Elementary School [Pref.19] (About27 k mWest)	2011/3/30 13:20	2011/4/11 15:54	480 <sup>*1</sup>	2011/4/18 15:59	697 <sup>*1</sup>	168h05minutes	217 (1.3 $\mu$ Sv/h)
Tokiwa Administration Bureau [Pref.20] (About35 k mWest)	2011/3/30 14:20	2011/4/11 16:13	167 <sup>*1</sup>	2011/4/18 16:27	253 <sup>*1</sup>	168h14minutes	86 (0.5 $\mu$ Sv/h)
Tamura City Hall [Pref.21] (About41 k mWest)	2011/3/30 12:05	2011/4/11 11:06	137 <sup>*1</sup>	2011/4/18 11:15	210 <sup>*1</sup>	168h09minutes	73 (0.4 $\mu$ Sv/h)
Miharu Town Hall [Pref.22] (About48 k mWest)	setting up the equipment						
Environment Center [Pref.23] (About60 k mWest)	2011/3/30 16:08	2011/4/12 10:10	425 <sup>*1</sup>	2011/4/19 8:48	620 <sup>*1</sup>	166h38minutes	195 (1.2 $\mu$ Sv/h)
Ono Town Hall [Pref.24] (About39 k mWestSouthWest)	2011/3/30 10:56	2011/4/11 10:41	61 <sup>*1</sup>	2011/4/18 10:29	91 <sup>*1</sup>	167h48minutes	30 (0.2 $\mu$ Sv/h)
Hirata Village Hall [Pref.25] (About47 k mWestSouthWest)	setting up the equipment						
Shirakawa joint government Hall [Pref.26] (About81 k mSouthWest)	2011/4/8 18:00	2011/4/11 10:00	24 <sup>*1</sup>	2011/4/18 10:00	82 <sup>*1</sup>	168h00minutes	58 (0.3 $\mu$ Sv/h)
Nishigou Village Hall [Pref.27] (About84 k mWestSouthWest)	2011/4/7 15:30	2011/4/11 10:00	62 <sup>*1</sup>	2011/4/18 10:55	174 <sup>*1</sup>	168h55minutes	112 (0.7 $\mu$ Sv/h)
Izumizaki Village Hall [Pref.28] (About72 k mWestSouthWest)	2011/4/7 17:40	2011/4/11 10:00	44 <sup>*1</sup>	2011/4/18 10:00	127 <sup>*1</sup>	168h00minutes	83 (0.5 $\mu$ Sv/h)
Nakajima Village Hall [Pref.29] (About68 k mWestSouthWest)	2011/4/7 17:10	2011/4/11 10:00	16 <sup>*1</sup>	2011/4/18 9:00	45 <sup>*1</sup>	167h00minutes	29 (0.2 $\mu$ Sv/h)
Yabuki Town Hall [Pref.30] (About66 k mWestSouthWest)	2011/4/7 16:40	2011/4/11 10:00	44 <sup>*1</sup>	2011/4/18 10:00	121 <sup>*1</sup>	168h00minutes	77 (0.5 $\mu$ Sv/h)
Tanagura Town Hall [Pref.31] (About73 k mWestSouthWest)	2011/4/8 16:45	2011/4/11 10:00	22 <sup>*1</sup>	2011/4/18 9:30	77 <sup>*1</sup>	167h30minutes	55 (0.3 $\mu$ Sv/h)
Yamatsuri Town Hall [Pref.32] (About82 k mSouthWest)	2011/4/8 15:40	2011/4/11 10:00	11 <sup>*1</sup>	2011/4/18 10:00	37 <sup>*1</sup>	168h00minutes	26 (0.2 $\mu$ Sv/h)
Hanawa Town Hall [Pref.33] (About76 k mSouthWest)	2011/4/8 16:10	2011/4/11 10:00	22 <sup>*1</sup>	2011/4/18 10:30	66 <sup>*1</sup>	168h30minutes	44 (0.3 $\mu$ Sv/h)
Samegawa Village Hall [Pref.34] (About63 k mSouthWest)	2011/4/8 14:05	2011/4/11 10:00	12 <sup>*1</sup>	2011/4/18 9:50	43 <sup>*1</sup>	167h50minutes	31 (0.2 $\mu$ Sv/h)
Aizuwakamatsu joint government building [Pref.35] (About97 k mWest)	2011/4/13 16:33	2011/4/13 16:33	0 <sup>*1</sup>	2011/4/18 10:00	21 <sup>*1</sup>	113h27minutes	21 (0.2 $\mu$ Sv/h)
Kitakata City Hall [Pref.36] (About105 k mWestNorthWest)	2011/4/12 13:26	2011/4/12 13:26	0 <sup>*1</sup>	2011/4/18 10:00	28 <sup>*1</sup>	140h34minutes	28 (0.2 $\mu$ Sv/h)
Kita Shiobara Village Hall [Pref.37] (About100 k mWestNorthWest)	2011/4/12 12:03	2011/4/12 12:03	0 <sup>*1</sup>	2011/4/18 10:00	31 <sup>*1</sup>	141h57minutes	31 (0.2 $\mu$ Sv/h)
Nozawa Elementary School (Nishi Aizu Town) [Pref.38] (About124 k mWest)	2011/4/13 11:51	2011/4/13 11:51	0 <sup>*1</sup>	2011/4/18 10:00	21 <sup>*1</sup>	118h09minutes	21 (0.2 $\mu$ Sv/h)
Bandai Town Hall [Pref.39] (About94 k mWest)	2011/4/12 10:01	2011/4/12 10:01	0 <sup>*1</sup>	2011/4/18 10:00	33 <sup>*1</sup>	143h59minutes	33 (0.2 $\mu$ Sv/h)

**\*1 Value measured by simple dosimeters (pocket dosimeters)**

Sampling Point (Distance from Fukushima Dai-ichi NPP)	Installation Date and Time	Date and Time (last monitoring) (x)	Readings (last monitoring) (a) ( $\mu$ Sv)	Monitoring Date and Time (y)	Reading of Integrated Dose (b) ( $\mu$ Sv)	Accumulated Time (z = y - x)	Reading of integrated Dose (c = b - a)
							Average does per hour (c/z)
Inawashiro Town Hall [Pref.40] (About83k mWest)	2011/4/12 10:53	2011/4/12 10:53	0 <sup>**1</sup>	2011/4/18 10:00	27 <sup>**1</sup>	143h07minutes	27 (0.2 $\mu$ Sv/h)
Aizubange Town Hall [Pref.41] (About108 k mWest)	Setting up the equipment						
Yugawa Village Community Center [Pref.42] (About103 k mWest)	Setting up the equipment						
Yanaizu Town Hall [Pref.43] (About117 k mWest)	2011/4/14 9:57	2011/4/14 9:57	0 <sup>**1</sup>	2011/4/18 10:00	23 <sup>**1</sup>	96h03minutes	23 (0.2 $\mu$ Sv/h)
Mishima Town Hall [Pref.44] (About123 k mWest)	2011/4/14 10:50	2011/4/14 10:50	0 <sup>**1</sup>	2011/4/18 10:00	19 <sup>**1</sup>	95h10minutes	19 (0.2 $\mu$ Sv/h)
Kaneyama Town Hall [Pref.45] (About133 k mWest)	2011/4/14 11:47	2011/4/14 11:47	0 <sup>**1</sup>	2011/4/18 10:00	14 <sup>**1</sup>	94h13minutes	14 (0.1 $\mu$ Sv/h)
Shouwa Village Hall [Pref.46] (About126 k mWest)	2011/4/14 13:48	2011/4/14 13:48	0 <sup>**1</sup>	2011/4/18 10:00	15 <sup>**1</sup>	92h12minutes	15 (0.2 $\mu$ Sv/h)
Aizumisato Town Hall Takada branch [Pref.47] (About105 k mWest)	2011/4/14 15:27	2011/4/14 15:27	0 <sup>**1</sup>	2011/4/18 11:00	16 <sup>**1</sup>	91h33minutes	16 (0.2 $\mu$ Sv/h)
Minamiaizu joint government building [Pref.48] (About115 k mWestSouthWest)	2011/4/8 9:38	2011/4/11 10:00	9 <sup>**1</sup>	2011/4/18 10:00	32 <sup>**1</sup>	168h00minutes	23 (0.1 $\mu$ Sv/h)
Shimogou Town Hall [Pref.49] (About104 k mWest)	Setting up the equipment						
Souma City Hall [Pref.50] (About43 k mNorthNorthWest)	2011/3/29 13:38	2011/4/11 11:21	283 <sup>**1</sup>	2011/4/18 11:13	396 <sup>**1</sup>	167h52minutes	113 (0.7 $\mu$ Sv/h)
Shinchi Town Hall [Pref.51] (About52 k mNorthNorthWest)	Setting up the equipment						
Minamisouma City Kashima office [Pref.52] (About32 k mNorth)	2011/3/29 15:40	2011/4/11 12:25	353 <sup>**1</sup>	2011/4/18 12:40	511 <sup>**1</sup>	168h15minutes	158 (0.9 $\mu$ Sv/h)
Bajikouen [Pref.53] (About20 k mNorthWest)	2011/3/29 16:50	2011/4/11 13:08	829 <sup>**1</sup>	2011/4/18 13:37	1207 <sup>**1</sup>	168h29minutes	378 (2.2 $\mu$ Sv/h)
Ishigami junior high school(Minami Soma city) [Pref.54] (About25 k mNorthNorthWest)	2011/3/29 17:12	2011/4/11 13:21	622 <sup>**1</sup>	2011/4/18 13:55	896 <sup>**1</sup>	168h34minutes	274 (1.6 $\mu$ Sv/h)
Tsushima elementary school(Namie Town) [Pref.55] (About29 k mNorthWest)	2011/3/30 11:40	2011/4/11 14:50	4663 <sup>**1</sup>	2011/4/18 15:05	6700 <sup>**1</sup>	168h15minutes	2037 (12.1 $\mu$ Sv/h)
Iwakioota Station [Pref.56] (About21 k mNorth)	2011/3/29 16:22	2011/4/11 12:53	268 <sup>**1</sup>	2011/4/18 13:21	381 <sup>**1</sup>	168h28minutes	113 (0.7 $\mu$ Sv/h)
Minamisouma Town Hall [Pref.57] (About24 k mNorth)	2011/3/30 15:10	2011/4/10 13:00	224 <sup>**1</sup>	2011/4/18 13:07	359 <sup>**1</sup>	192h07minutes	135 (0.7 $\mu$ Sv/h)
Iitate Village Hall [Pref.58] (About39 k mNorthWest)	2011/3/30 13:20	2011/4/11 12:50	1410 <sup>**1</sup>	2011/4/18 11:33	2081 <sup>**1</sup>	166h43minutes	671 (4.0 $\mu$ Sv/h)
Yamakiya Post Office [Pref.59] (About38 k mNorthWest)	2011/3/30 13:54	2011/4/11 12:36	903 <sup>**1</sup>	2011/4/18 12:23	1334 <sup>**1</sup>	167h47minutes	431 (2.6 $\mu$ Sv/h)
Katsurao Village Hall [Pref.60] (About25 k mWest)	2011/3/30 12:20	2011/4/11 15:17	626 <sup>**1</sup>	2011/4/18 15:23	932 <sup>**1</sup>	168h06minutes	306 (1.8 $\mu$ Sv/h)
Futatsu-numa Park [Pref.61] (About24 k mSouth)	2011/4/1 15:30	2011/4/11 13:59	308 <sup>**1</sup>	2011/4/18 13:40	469 <sup>**1</sup>	167h41minutes	161 (1.0 $\mu$ Sv/h)
Iwaki joint government building [Pref.62] (About43 k mSouthSouthWest)	2011/3/30 13:00	2011/4/11 10:00	230 <sup>**1</sup>	2011/4/18 18:00	315 <sup>**1</sup>	176h00minutes	85 (0.5 $\mu$ Sv/h)

**\*1 Value measured by simple dosimeters (pocket dosimeters)**

Sampling Point (Distance from Fukushima Dai-ichi NPP)	Installation Date and Time	Date and Time (last monitoring) (x)	Readings (last monitoring) (a) ( $\mu$ Sv)	Monitoring Date and Time (y)	Reading of Integrated Dose (b) ( $\mu$ Sv)	Accumulated Time (z = y - x)	Reading of integrated Dose (c = b - a)
							Average does per hour (c/z)
Iwaki city Nakoso Branch Office [Pref.63] (About 61 k m SouthSouthWest)	2011/4/1 12:35	2011/4/11 11:45	67 <sup>**1</sup>	2011/4/18 11:30	101 <sup>**1</sup>	167h45minutes	34 (0.2 $\mu$ Sv/h)
Kawamae Station [Pref.64] (About 35 k m SouthWest)	2011/4/1 16:50	2011/4/11 15:24	108 <sup>**1</sup>	2011/4/18 15:08	168 <sup>**1</sup>	167h44minutes	60 (0.4 $\mu$ Sv/h)
Yumoto High School [Pref.65] (About 51 k m South)	2011/4/1 14:10	2011/4/11 12:41	147 <sup>**1</sup>	2011/4/18 12:10	222 <sup>**1</sup>	167h29minutes	75 (0.4 $\mu$ Sv/h)
Kairyu no Sato Center [Pref.66] (About 28 k m South)	2011/4/1 15:10	2011/4/11 13:42	277 <sup>**1</sup>	2011/4/18 13:20	407 <sup>**1</sup>	167h38minutes	130 (0.8 $\mu$ Sv/h)

Remarks)

· Reading by : Fukushima Pref. (Emergency Monitoring Unit)

· Sampling point : 1 m from ground

· The figures of 0.0 in the column "Date and Time (last monitoring)" indicate that there was new installation in the area.

**· Values measured by simple dosimeters (pocket dosimeters) do not correspond to accumulated air dose rates measured by survey meters at the same reading posts due to the characteristics of measurement devices, etc.**

**· Regarding Tamakawa Village Hall [pref. 15], Furudono Town Hall [pref. 17], Miharu Town Hall [pref. 22], Hirata Village Hall [pref. 25], Shimogou Town Hall [pref. 49], and Shinchi Town Hall [pref. 51], measurement devices are being adjusted because the readings are not stable.**

· Revised installation date and time of Iwaki joint government building (Pref.62) from report no.1.

# Readings of Fukushima Pref. Air Dose Rate (Northern part ,Midland, South,Aizu, South Aizu)

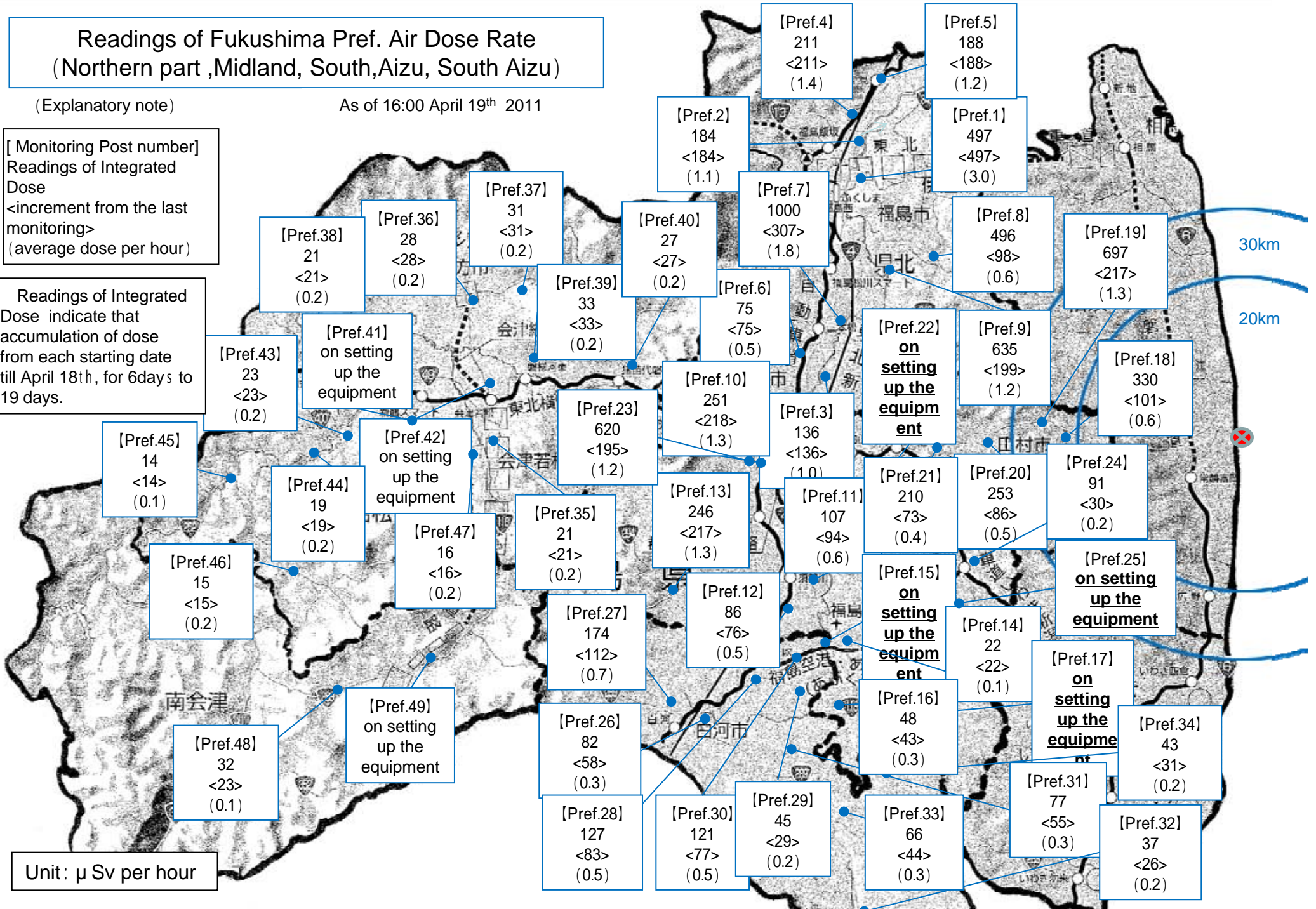
(Explanatory note)

As of 16:00 April 19<sup>th</sup> 2011

[ Monitoring Post number ]  
Readings of Integrated  
Dose  
<increment from the last  
monitoring>  
(average dose per hour)

Readings of Integrated  
Dose indicate that  
accumulation of dose  
from each starting date  
till April 18<sup>th</sup>, for 6days to  
19 days.

Unit :  $\mu$  Sv per hour



# Readings of Fukushima Pref. Air Dose Rate (Sousou, Iwaki)

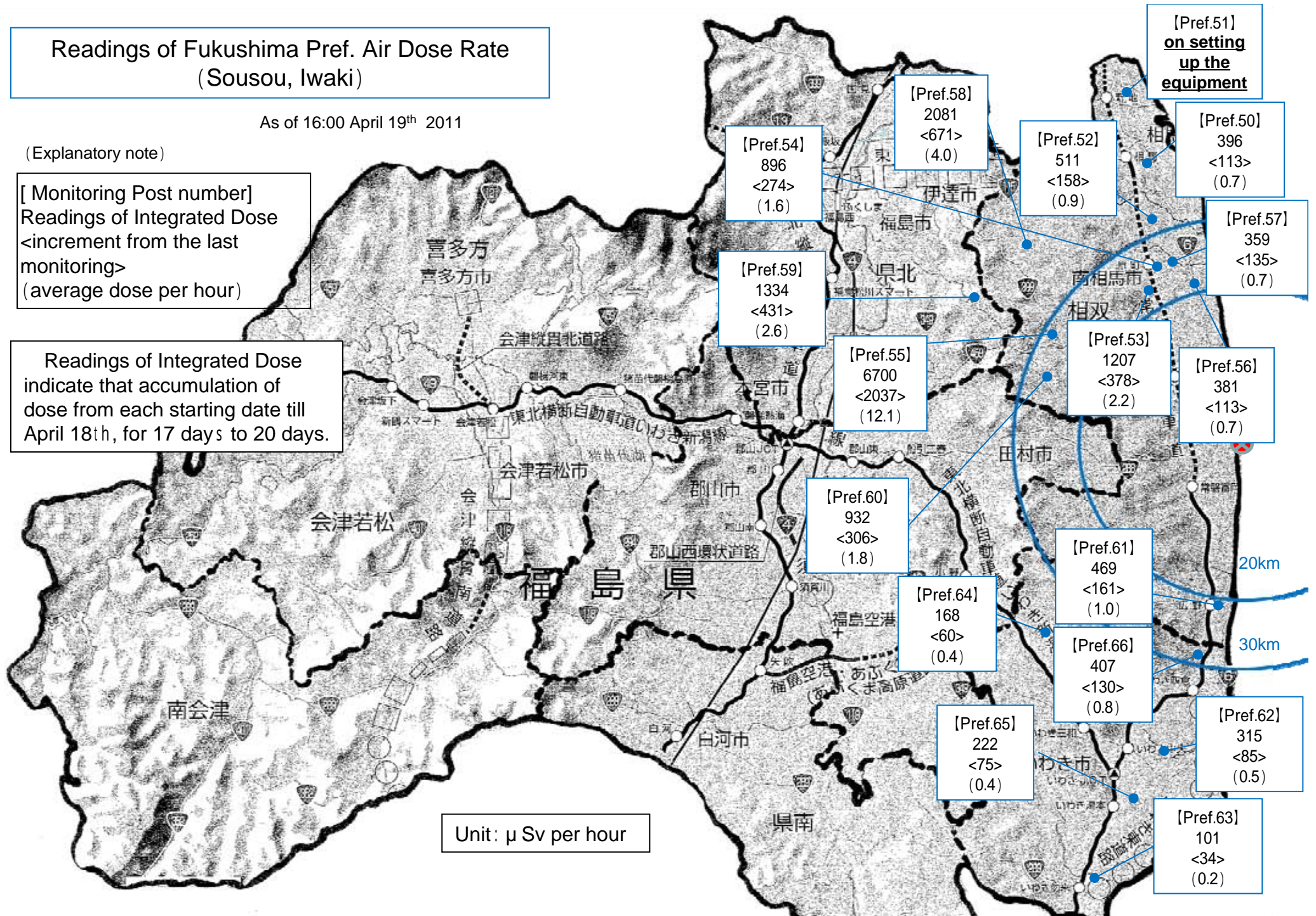
As of 16:00 April 19<sup>th</sup> 2011

(Explanatory note)

[ Monitoring Post number ]  
Readings of Integrated Dose  
<increment from the last  
monitoring>  
(average dose per hour)

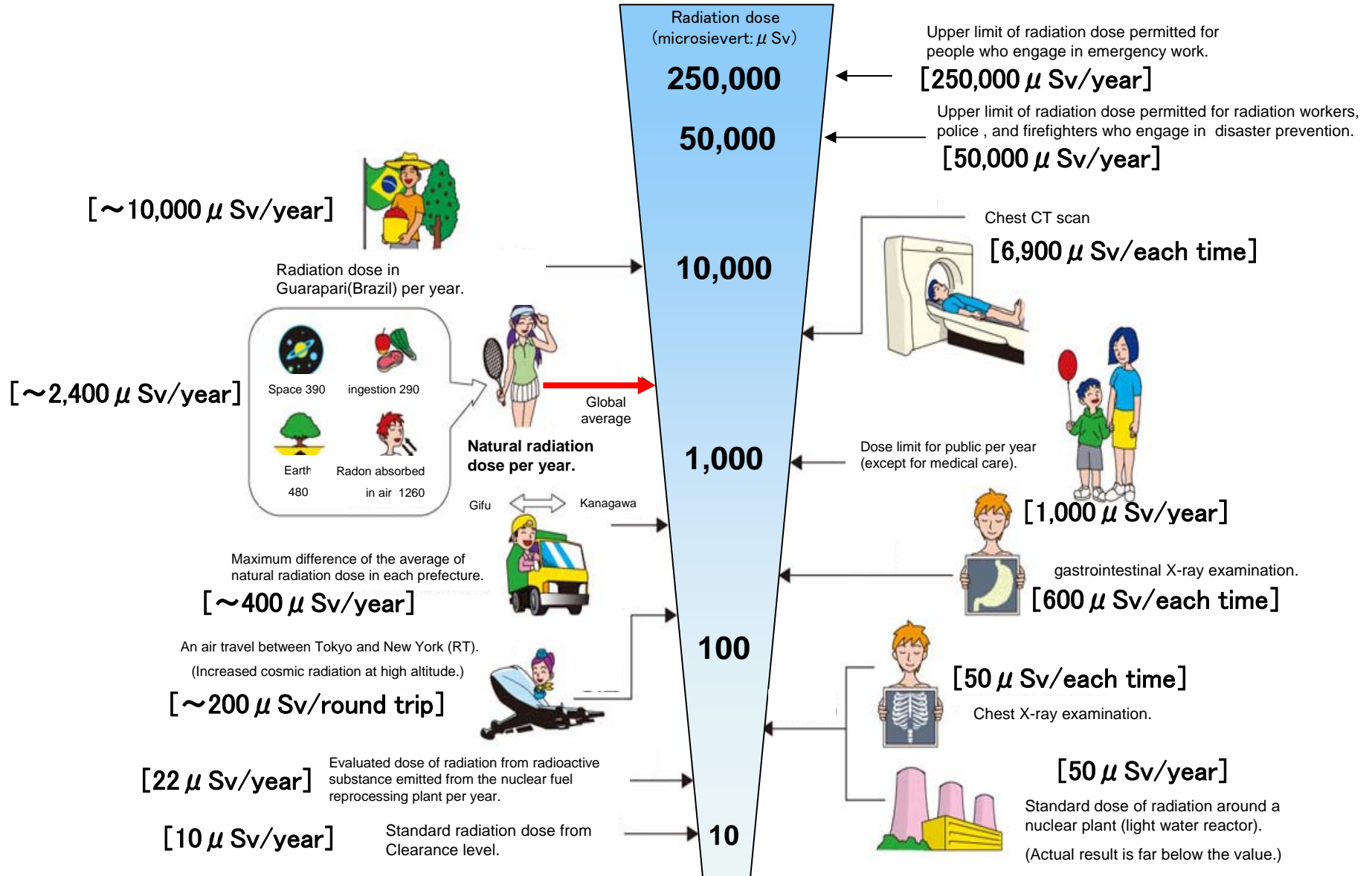
Readings of Integrated Dose  
indicate that accumulation of  
dose from each starting date till  
April 18<sup>th</sup>, for 17 days to 20 days.

Unit:  $\mu$ Sv per hour



# Radiation in Daily-life

※Unit :  $\mu\text{Sv}$



※ Sv [Sievert] = Constant of organism effect by kind of radiation (※) × Gy [gray]

※ It is 1 in case of X ray and  $\gamma$  ray.