

Readings of Air Dose Rate in Fukushima Pref.. (Report No.1)

As of 14:00 April 12,2011
Nuclear Emergency On-Site Task Force

***1 Value measured by simple dosimeters (pocket dosimeters)**

Sampling Point (Distance from Fukushima Dai-ichi NPP)	Installation Date and Time	Date and Time (last monitoring) (x)	Readings (last monitoring) (a) (μ Sv)	Monitoring Date and Time (y)	Reading of Integrated Dose (b) (μ Sv)	Accumulated Time ($z = y - x$)	Reading of integrated Dose ($c = b - a$) (μ Sv)
							Average does per hour (c/z)
Northern part's health and welfare office [Pref.1] (About61kmNorthWest)							
Date City Hall [Pref.2] (About62kmWestNorthWest)							
Motomiya City Hall [Pref.3] (About57kmWest)							
Fukushima Northern Police Station Koori branch [Pref.4] (About62kmNorthWest)							
Kunimi Town Hall [Pref.5] (About61kmNorthWest)							
Ootama Village Hall [Pref.6] (About60kmWestNorthWest)							
Nihonmatsu City Hall [Pref.7] (About56kmWestNorthWest)	2011/3/30 10:27	2011/3/30 10:27	0 ^{**1}	2011/4/11 10:07	693 ^{**1}	287h40minutes	693 (2.4 μ Sv/h)
Kawamata Town Hall [Pref.8] (About47kmWestNorthWest)	2011/3/30 11:10	2011/3/30 11:10	0 ^{**1}	2011/4/11 10:43	398 ^{**1}	287h33minutes	398 (1.4 μ Sv/h)
Fukushima City lino branch office [Pref.9] (About51kmNorthWest)	2011/3/30 10:32	2011/3/30 10:32	0 ^{**1}	2011/4/11 17:33	436 ^{**1}	295h01minutes	436 (1.5 μ Sv/h)
Kooriyama Joint government building [Pref.10] (About58kmWest)	2011/4/10 10:00	2011/4/10 10:00	0 ^{**1}	2011/4/11 10:00	33 ^{**1}	24h00minutes	33 (1.4 μ Sv/h)
Sugakawa City Hall [Pref.11] (About60kmWestSouthWest)	2011/4/10 10:20	2011/4/10 10:20	0 ^{**1}	2011/4/11 10:00	13 ^{**1}	23h40minutes	13 (0.5 μ Sv/h)
Kagamiishi Town Hall [Pref.12] (About64kmWestSouthWest)	2011/4/10 11:00	2011/4/10 11:00	0 ^{**1}	2011/4/11 10:00	10 ^{**1}	23h00minutes	10 (0.4 μ Sv/h)
Tenei Town Hall [Pref.13] (About72kmWestSouthWest)	2011/4/10 11:54	2011/4/10 11:54	0 ^{**1}	2011/4/11 10:00	29 ^{**1}	22h06minutes	29 (1.3 μ Sv/h)
Ishikawa Town Hall [Pref.14] (About60kmWestSouthWest)	setting up the equipment						
Tamakawa Village Hall [Pref.15] (About60kmWestSouthWest)	setting up the equipment						
Asakawa Town Hall [Pref.16] (About67kmSouthWest)	2011/4/10 15:30	2011/4/10 15:30	0 ^{**1}	2011/4/11 10:00	5 ^{**1}	18h30minutes	5 (0.3 μ Sv/h)

*1 Value measured by simple dosimeters (pocket dosimeters)

Sampling Point (Distance from Fukushima Dai-ichi NPP)	Installation Date and Time	Date and Time (last monitoring) (x)	Readings (last monitoring) (a) (μ Sv)	Monitoring Date and Time (y)	Reading of Integrated Dose (b) (μ Sv)	Accumulated Time ($z = y - x$)	Reading of integrated Dose ($c = b - a$) (μ Sv)
							Average does per hour (c/z)
Furudono Town Hall [Pref.17] (About56kmSouthWest)	setting up the equipment						
Tamura City Miyakoji Administration Bureau [Pref.18] (About21kmWest)	2011/3/30 13:00	2011/3/30 13:00	0**1	2011/4/11 15:42	229**1	290h42minutes	229 (0.8 μ Sv/h)
Iwaisawa Elementary School [Pref.19] (About27kmWest)	2011/3/30 13:20	2011/3/30 13:20	0**1	2011/4/11 15:54	480**1	290h34minutes	480 (1.7 μ Sv/h)
Tokiwa Administration Bureau [Pref.20] (About35kmWest)	2011/3/30 14:20	2011/3/30 14:20	0**1	2011/4/11 16:13	167**1	289h53minutes	167 (0.6 μ Sv/h)
Tamura City Hall [Pref.21] (About41kmWest)	2011/3/30 12:05	2011/3/30 12:05	0**1	2011/4/11 11:06	137**1	287h01minutes	137 (0.5 μ Sv/h)
Miharu Town Hall [Pref.22] (About48kmWest)	setting up the equipment						
Environment Center [Pref.23] (About60kmWest)	2011/3/30 16:08	2011/3/30 16:08	0**1	2011/4/12 10:10	425**1	306h02minutes	425 (1.4 μ Sv/h)
Ono Town Hall [Pref.24] (About39kmWestSouthWest)	2011/3/30 10:56	2011/3/30 10:56	0**1	2011/4/11 10:41	61**1	287h45minutes	61 (0.2 μ Sv/h)
Hirata Village Hall [Pref.25] (About47kmWestSouthWest)	setting up the equipment						
Shirakawa joint government Hall [Pref.26] (About81kmSouthWest)	2011/4/8 18:00	2011/4/8 18:00	0**1	2011/4/11 10:00	24**1	64h00minutes	24 (0.4 μ Sv/h)
Nishigou Village Hall [Pref.27] (About84kmWestSouthWest)	2011/4/7 15:30	2011/4/7 15:30	0**1	2011/4/11 10:00	62**1	90h30minutes	62 (0.7 μ Sv/h)
Izumizaki Village Hall [Pref.28] (About72kmWestSouthWest)	2011/4/7 17:40	2011/4/7 17:40	0**1	2011/4/11 10:00	44**1	88h20minutes	44 (0.5 μ Sv/h)
Nakajima Village Hall [Pref.29] (About68kmWestSouthWest)	2011/4/7 17:10	2011/4/7 17:10	0**1	2011/4/11 10:00	16**1	88h50minutes	16 (0.2 μ Sv/h)
Yabuki Town Hall [Pref.30] (About66kmWestSouthWest)	2011/4/7 16:40	2011/4/7 16:40	0**1	2011/4/11 10:00	44**1	89h20minutes	44 (0.5 μ Sv/h)
Tanagura Town Hall [Pref.31] (About73kmWestSouthWest)	2011/4/8 16:45	2011/4/8 16:45	0**1	2011/4/11 10:00	22**1	65h15minutes	22 (0.3 μ Sv/h)
Yamatsuri Town Hall [Pref.32] (About82kmSouthWest)	2011/4/8 15:40	2011/4/8 15:40	0**1	2011/4/11 10:00	11**1	66h20minutes	11 (0.2 μ Sv/h)
Hanawa Town Hall [Pref.33] (About76kmSouthWest)	2011/4/8 16:10	2011/4/8 16:10	0**1	2011/4/11 10:00	22**1	65h50minutes	22 (0.3 μ Sv/h)
Samegawa Village Hall [Pref.34] (About63kmSouthWest)	2011/4/8 14:05	2011/4/8 14:05	0**1	2011/4/11 10:00	12**1	67h55minutes	12 (0.2 μ Sv/h)
Aizuwakamatsu joint government building [Pref.35] (About97kmWest)							
Kitakata City Hall [Pref.36] (About105kmWestNorthWest)							
Kita Shiobara Village Hall [Pref.37] (About100kmWestNorthWest)							
Nozawa Elementary School(Nishi Aizu Town) [Pref.38] (About124kmWest)							

*1 Value measured by simple dosimeters (pocket dosimeters)

Sampling Point (Distance from Fukushima Dai-ichi NPP)	Installation Date and Time	Date and Time (last monitoring) (x)	Readings (last monitoring) (a) (μ Sv)	Monitoring Date and Time (y)	Reading of Integrated Dose (b) (μ Sv)	Accumulated Time ($z = y - x$)	Reading of integrated Dose ($c = b - a$) (μ Sv)
							Average does per hour (c/z)
Bandai Town Hall [Pref.39] (About94k mWest)							
Inawashiro Town Hall [Pref.40] (About83k mWest)							
Aizubange Town Hall [Pref.41] (About108k mWest)							
Yugawa Village Community Center [Pref.42] (About103k mWest)							
Yanaizu Town Hall [Pref.43] (About117k mWest)							
Mishima Town Hall [Pref.44] (About123k mWest)							
Kaneyama Town Hall [Pref.45] (About133k mWest)							
Shouwa Village Hall [Pref.46] (About126k mWest)							
Aizumisato Town Hall Takada branch [Pref.47] (About105k mWest)							
Minamiaizu joint government building [Pref.48] (About115k mWestSouthWest)	2011/4/8 9:38	2011/4/8 9:38	0 ^{**1}	2011/4/11 10:00	9 ^{**1}	72h22minutes	9 (0.1 μ Sv/h)
Shimogou Town Hall [Pref.49] (About104k mWest)	Setting up the equipment						
Souma City Hall [Pref.50] (About43k mNorthNorthWest)	2011/3/29 13:38	2011/3/29 13:38	0 ^{**1}	2011/4/11 11:21	283 ^{**1}	309h43minutes	283 (0.9 μ Sv/h)
Shinchi Town Hall [Pref.51] (About52k mNorthNorthWest)	Setting up the equipment						
Minamisouma City Kashima office [Pref.52] (About32k mNorth)	2011/3/29 15:40	2011/3/29 15:40	0 ^{**1}	2011/4/11 12:25	353 ^{**1}	308h45minutes	353 (1.1 μ Sv/h)
Bajikouen [Pref.53] (About20k mNorthWest)	2011/3/29 16:50	2011/3/29 16:50	0 ^{**1}	2011/4/11 13:08	829 ^{**1}	308h18minutes	829 (2.7 μ Sv/h)
Ishigami junior high school(Minami Soma city) [Pref.54] (About25k mNorthNorthWest)	2011/3/29 17:12	2011/3/29 17:12	0 ^{**1}	2011/4/11 13:21	622 ^{**1}	308h09minutes	622 (2.0 μ Sv/h)
Tsushima elementary school (Namie Town) [Pref.55] (About29k mNorthWest)	2011/3/30 11:40	2011/3/30 11:40	0 ^{**1}	2011/4/11 14:50	4663 ^{**1}	291h10minutes	4663 (16.0 μ Sv/h)
Iwakioota Station [Pref.56] (About21k mNorth)	2011/3/29 16:22	2011/3/29 16:22	0 ^{**1}	2011/4/11 12:53	268 ^{**1}	308h31minutes	268 (0.9 μ Sv/h)
Minamisouma Town Hall [Pref.57] (About24k mNorth)	2011/3/30 15:10	2011/3/30 15:10	0 ^{**1}	2011/4/10 13:00	224 ^{**1}	261h50minutes	224 (0.9 μ Sv/h)
litate Village Hall [Pref.58] (About39k mNorthWest)	2011/3/30 13:20	2011/3/30 13:20	0 ^{**1}	2011/4/11 12:50	1410 ^{**1}	287h30minutes	1410 (4.9 μ Sv/h)
Yamakiya Post Office [Pref.59] (About38k mNorthWest)	2011/3/30 13:54	2011/3/30 13:54	0 ^{**1}	2011/4/11 12:36	903 ^{**1}	286h42minutes	903 (3.1 μ Sv/h)
Katsurao Village Hall [Pref.60] (About25k mWest)	2011/3/30 12:20	2011/3/30 12:20	0 ^{**1}	2011/4/11 15:17	626 ^{**1}	290h57minutes	626 (2.2 μ Sv/h)
Futatsu-numa Park [Pref.61] (About24k mSouth)	2011/4/1 15:30	2011/4/1 15:30	0 ^{**1}	2011/4/11 13:59	308 ^{**1}	238h29minutes	308 (1.3 μ Sv/h)

*1 Value measured by simple dosimeters (pocket dosimeters)

Sampling Point (Distance from Fukushima Dai-ichi NPP)	Installation Date and Time	Date and Time (last monitoring) (x)	Readings (last monitoring) (a) (μ Sv)	Monitoring Date and Time (y)	Reading of Integrated Dose (b) (μ Sv)	Accumulated Time ($z = y - x$)	Reading of integrated Dose ($c = b - a$) (μ Sv)
							Average does per hour (c/z)
Iwaki joint government building [Pref.62] (About43k mSouthSouthWest)	2011/3/30 12:26	2011/3/30 12:26	0 ^{**1}	2011/4/11 10:00	230 ^{**1}	285h34minutes	230 (0.8 μ Sv/h)
Iwaki city Nakoso Branch Office [Pref.63] (About61k mSouthSouthWest)	2011/4/1 12:35	2011/4/1 12:35	0 ^{**1}	2011/4/11 11:45	67 ^{**1}	239h10minutes	67 (0.3 μ Sv/h)
Kawamae Station [Pref.64] (About35k mSouthWest)	2011/4/1 16:50	2011/4/1 16:50	0 ^{**1}	2011/4/11 15:24	108 ^{**1}	238h34minutes	108 (0.5 μ Sv/h)
Yumoto High School [Pref.65] (About51k mSouth)	2011/4/1 14:10	2011/4/1 14:10	0 ^{**1}	2011/4/11 12:41	147 ^{**1}	238h31minutes	147 (0.6 μ Sv/h)
Kairyu no Sato Center [Pref.66] (About28k mSouth)	2011/4/1 15:10	2011/4/1 15:10	0 ^{**1}	2011/4/11 13:42	277 ^{**1}	238h32minutes	277 (1.2 μ Sv/h)

Remarks)

· Reading by : Fukushima Pref. (Emergency Monitoring Unit)

· The figures of 0.0 in the column "Date and Time (last monitoring)" indicate that there was new installation in the area.

· Measurement would be started as soon as the installation of the dosimeter in sampling points with no data now. (As of April 11th 2011, the installation has done at 47 points in 66 points all.)

· Values measured by simple dosimeters (pocket dosimeters) do not correspond to accumulated air dose rates measured by survey meters at the same reading posts due to the characteristics of measurement devices, etc.

· Regarding Tamakawa Village Hall [pref. 15], Furudono Town Hall [pref. 17], Miharu Town Hall [pref. 22], Hirata Village Hall [pref. 25], Shimogou Town Hall [pref. 49], and Shinchi Town Hall [pref. 51], measurement devices are being adjusted because the readings are not stable.

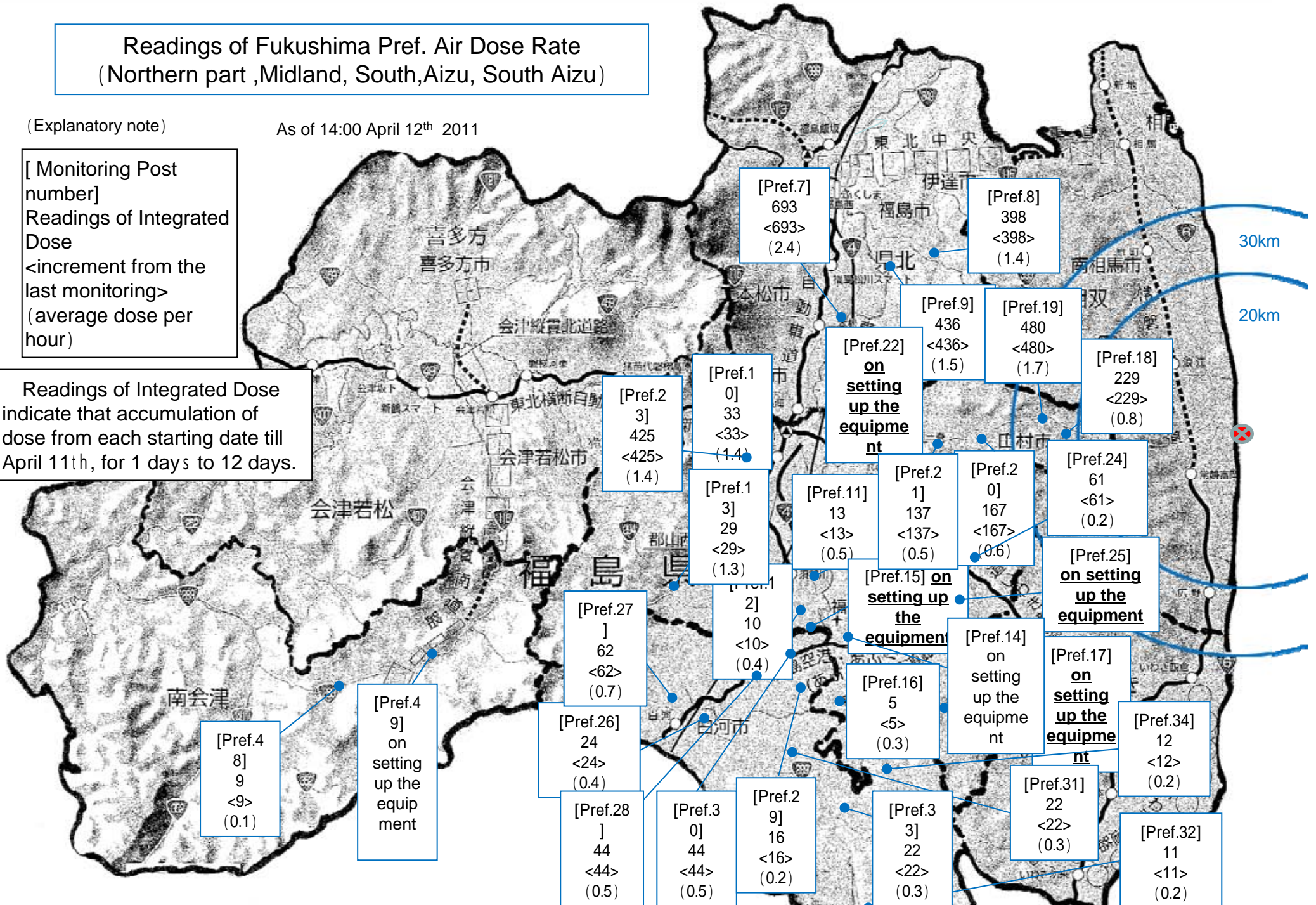
Readings of Fukushima Pref. Air Dose Rate (Northern part ,Midland, South,Aizu, South Aizu)

(Explanatory note)

As of 14:00 April 12th 2011

[Monitoring Post number]
Readings of Integrated Dose
<increment from the last monitoring>
(average dose per hour)

Readings of Integrated Dose indicate that accumulation of dose from each starting date till April 11th, for 1 days to 12 days.



Readings of Fukushima Pref. Air Dose Rate (Sousou, Iwaki)

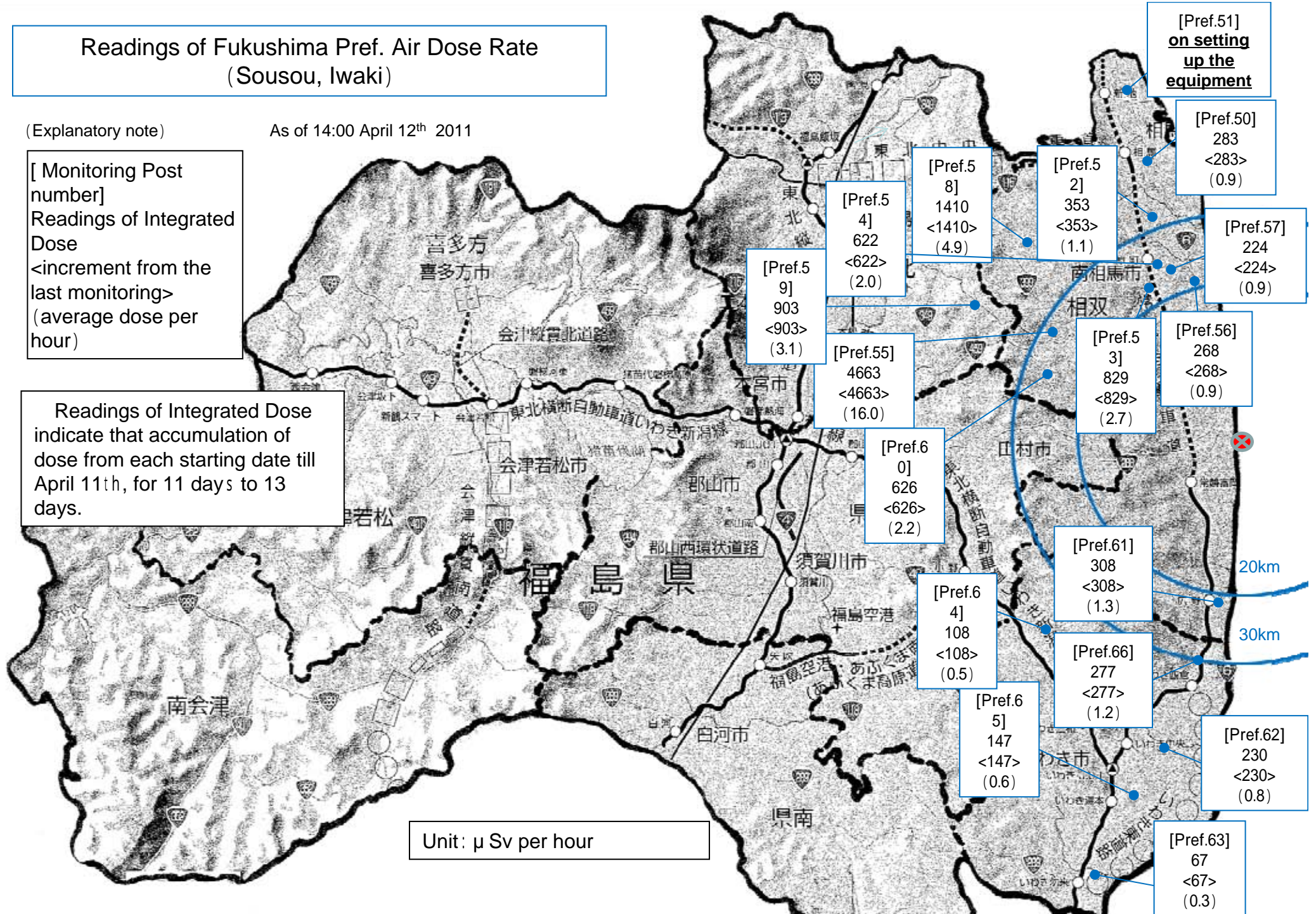
(Explanatory note)

As of 14:00 April 12th 2011

[Monitoring Post number]
Readings of Integrated Dose
<increment from the last monitoring>
(average dose per hour)

Readings of Integrated Dose indicate that accumulation of dose from each starting date till April 11th, for 11 days to 13 days.

Unit: μ Sv per hour



Radiation in Daily-life

※Unit : μSv



※ Sv [Sievert] = Constant of organism effect by kind of radiation (※) \times Gy [gray]

※ It is 1 in case of X ray and γ ray.