

Readings of Air Dose Rate in Fukushima Pref..(Report No.3)

As of 19:00 April 25,2011

*** 1 the readings are measured by pocket dosimeter**

Sampling Point (Distance from Fukushima Dai-ichi NPP)	Installation Date and Time	Date and Time (last monitoring) (x)	Readings (last monitoring) (a) (μ Sv)	Monitoring Date and Time (y)	Reading of Integrated Dose (b) (μ Sv)	Accumulated Time (z = y - x)	Reading of integrated Dose (c = b - a)
							Average does per hour (c/z)
Northern part's health and welfare office [1] (About61kmNorthWest)	2011/4/11 10:40	2011/4/18 10:30	497 ^{*1}	2011/4/25 10:15	968 ^{*1}	167h45min	471 (2.8 μ Sv/h)
Date City Hall [2] (About62kmWestNorthWest)	2011/4/11 14:30	2011/4/18 10:00	184 ^{*1}	2011/4/25 10:00	361 ^{*1}	168h00min	177 (1.1 μ Sv/h)
Motomiya City Hall [3] (About57kmWest)	2011/4/12 10:55	2011/4/18 10:00	136 ^{*1}	2011/4/25 10:40	291 ^{*1}	168h40min	155 (0.9 μ Sv/h)
Fukushima Northern Police Station Koori branch [4] (About62kmNorthWest)	2011/4/12 10:00	2011/4/18 15:25	211 ^{*1}	2011/4/25 10:07	424 ^{*1}	162h42min	213 (1.3 μ Sv/h)
Kunimi Town Hall [5] (About61kmNorthWest)	2011/4/11 15:20	2011/4/18 10:00	188 ^{*1}	2011/4/25 10:00	368 ^{*1}	168h00min	180 (1.1 μ Sv/h)
Ootama Village Hall [6] (About60kmWestNorthWest)	2011/4/12 10:30	2011/4/18 10:00	75 ^{*1}	2011/4/25 10:33	161 ^{*1}	168h33min	86 (0.5 μ Sv/h)
Nihonmatsu City Hall [7] (About56kmWestNorthWest)	2011/3/30 10:27	2011/4/18 10:15	1000 ^{*1}	2011/4/25 11:22	1299 ^{*1}	169h07min	299 (1.8 μ Sv/h)
Kawamata Town Hall [8] (About47kmWestNorthWest)	2011/3/30 11:10	2011/4/18 10:05	496 ^{*1}	2011/4/25 10:52	637 ^{*1}	168h47min	141 (0.8 μ Sv/h)
Fukushima City lino branch office [9] (About51kmNorthWest)	2011/3/30 10:32	2011/4/18 17:37	635 ^{*1}	2011/4/25 16:26	826 ^{*1}	166h49min	191 (1.1 μ Sv/h)
Kooriyama Joint government building [10] (About58kmWest)	2011/4/10 10:00	2011/4/18 10:00	251 ^{*1}	2011/4/25 10:00	460 ^{*1}	168h00min	209 (1.2 μ Sv/h)
Sugakawa City Hall [11] (About60kmWestSouthWest)	2011/4/10 10:20	2011/4/18 10:00	107 ^{*1}	2011/4/25 10:00	194 ^{*1}	168h00min	87 (0.5 μ Sv/h)
Kagamiishi Town Hall [12] (About64kmWestSouthWest)	2011/4/10 11:00	2011/4/18 10:00	86 ^{*1}	2011/4/25 10:00	160 ^{*1}	168h00min	74 (0.4 μ Sv/h)
Tenei Village Hall [13] (About72kmWestSouthWest)	2011/4/10 11:54	2011/4/18 10:00	246 ^{*1}	2011/4/25 13:00	450 ^{*1}	171h00min	204 (1.2 μ Sv/h)
Ishikawa Town Hall [14] (About60kmWestSouthWest)	2011/4/11 16:51	2011/4/18 10:00	22 ^{*1}	2011/4/25 12:00	45 ^{*1}	170h00min	23 (0.1 μ Sv/h)
Tamakawa Village Hall [15] (About60kmWestSouthWest)	Under adjustment of the equipment						
Asakawa Town Hall [16] (About67kmSouthWest)	2011/4/10 15:30	2011/4/18 10:00	48 ^{*1}	2011/4/25 10:00	88 ^{*1}	168h00min	40 (0.2 μ Sv/h)

* 1 the readings are measured by pocket dosimeter

Sampling Point (Distance from Fukushima Dai-ichi NPP)	Installation Date and Time	Date and Time (last monitoring) (x)	Readings (last monitoring) (a) (μ Sv)	Monitoring Date and Time (y)	Reading of Integrated Dose (b) (μ Sv)	Accumulated Time (z = y - x)	Reading of integrated Dose (c = b - a)
							Average does per hour (c / z)
Furudono Town Hall [17] (About56 k mSouthWest)	Under adjustment of the equipment						
Tamura City Miyakoji Administration Bureau [18] (About21 k mWest)	2011/3/30 13:00	2011/4/18 15:45	330 ^{*1}	2011/4/25 14:48	422 ^{*1}	167h03min	92 (0.6 μ Sv/h)
Iwaisawa Elementary School [19] (About27 k mWest)	2011/3/30 13:20	2011/4/18 15:59	697 ^{*1}	2011/4/25 15:00	894 ^{*1}	167h01min	197 (1.2 μ Sv/h)
Tokiwa Administration Bureau [20] (About35 k mWest)	2011/3/30 14:20	2011/4/18 16:27	253 ^{*1}	2011/4/25 15:19	333 ^{*1}	166h52min	80 (0.5 μ Sv/h)
Tamura City Hall [21] (About41 k mWest)	2011/3/30 12:05	2011/4/18 11:15	210 ^{*1}	2011/4/25 13:53	277 ^{*1}	170h38min	67 (0.4 μ Sv/h)
Miharu Town Hall [22] (About48 k mWest)	Under adjustment of the equipment						
Environment Center [23] (About60 k mWest)	2011/3/30 16:08	2011/4/19 8:48	620 ^{*1}	2011/4/25 10:00	785 ^{*1}	145h12min	165 (1.1 μ Sv/h)
Ono Town Hall [24] (About39 k mWestSouthWest)	2011/3/30 10:56	2011/4/18 10:29	91 ^{*1}	2011/4/25 11:25	120 ^{*1}	168h56min	29 (0.2 μ Sv/h)
Hirata Village Hall [25] (About47 k mWestSouthWest)	2011/4/1 17:40	2011/4/18 16:37	161 ^{*1}	2011/4/25 15:14	221 ^{*1}	166h37min	60 (0.4 μ Sv/h)
Shirakawa joint government Hall [26] (About81 k mSouthWest)	2011/4/18 14:17	2011/4/18 14:17	0 ^{*1}	2011/4/25 10:40	103 ^{*1}	164h23min	103 (0.6 μ Sv/h)
Nishigou Village Hall [27] (About84 k mWestSouthWest)	2011/4/7 15:30	2011/4/18 10:55	174 ^{*1}	2011/4/25 10:40	277 ^{*1}	167h45min	103 (0.6 μ Sv/h)
Izumizaki Village Hall [28] (About72 k mWestSouthWest)	2011/4/7 17:40	2011/4/18 10:00	127 ^{*1}	2011/4/25 10:00	203 ^{*1}	168h00min	76 (0.5 μ Sv/h)
Nakajima Village Hall [29] (About68 k mWestSouthWest)	2011/4/7 17:10	2011/4/18 9:00	45 ^{*1}	2011/4/25 8:30	72 ^{*1}	167h30min	27 (0.2 μ Sv/h)
Yabuki Town Hall [30] (About66 k mWestSouthWest)	2011/4/7 16:40	2011/4/18 10:00	121 ^{*1}	2011/4/25 10:00	193 ^{*1}	168h00min	72 (0.4 μ Sv/h)
Tanagura Town Hall [31] (About73 k mWestSouthWest)	2011/4/8 16:45	2011/4/18 9:30	77 ^{*1}	2011/4/25 10:40	126 ^{*1}	169h10min	49 (0.3 μ Sv/h)
Yamatsuri Town Hall [32] (About82 k mSouthWest)	2011/4/8 15:40	2011/4/18 10:00	37 ^{*1}	2011/4/25 10:00	63 ^{*1}	168h00min	26 (0.2 μ Sv/h)
Hanawa Town Hall [33] (About76 k mSouthWest)	2011/4/8 16:10	2011/4/18 10:30	66 ^{*1}	2011/4/25 10:30	109 ^{*1}	168h00min	43 (0.3 μ Sv/h)
Samegawa Village Hall [34] (About63 k mSouthWest)	2011/4/8 14:05	2011/4/18 9:50	43 ^{*1}	2011/4/25 9:46	72 ^{*1}	167h56min	29 (0.2 μ Sv/h)
Aizuwakamatsu joint government building [35] (About97 k mWest)	2011/4/13 16:33	2011/4/18 10:00	21 ^{*1}	2011/4/25 10:00	52 ^{*1}	168h00min	31 (0.2 μ Sv/h)
Kitakata City Hall [36] (About105 k mWestNorthWest)	2011/4/12 13:26	2011/4/18 10:00	28 ^{*1}	2011/4/25 10:00	63 ^{*1}	168h00min	35 (0.2 μ Sv/h)
Kita Shiobara Village Hall [37] (About100 k mWestNorthWest)	2011/4/12 12:03	2011/4/18 10:00	31 ^{*1}	2011/4/25 10:30	65 ^{*1}	168h30min	34 (0.2 μ Sv/h)
Nozawa Elementary School (Nishi Aizu Town) [38] (About124 k mWest)	2011/4/13 11:51	2011/4/18 10:00	21 ^{*1}	2011/4/25 10:00	49 ^{*1}	168h00min	28 (0.2 μ Sv/h)
Bandai Town Hall [39] (About94 k mWest)	2011/4/12 10:01	2011/4/18 10:00	33 ^{*1}	2011/4/25 10:00	71 ^{*1}	168h00min	38 (0.2 μ Sv/h)

* 1 the readings are measured by pocket dosimeter

Sampling Point (Distance from Fukushima Dai-ichi NPP)	Installation Date and Time	Date and Time (last monitoring) (x)	Readings (last monitoring) (a) (μ Sv)	Monitoring Date and Time (y)	Reading of Integrated Dose (b) (μ Sv)	Accumulated Time (z = y - x)	Reading of integrated Dose (c = b - a)
							Average does per hour (c/z)
Inawashiro Town Hall [40] (About83k mWest)	2011/4/12 10:53	2011/4/18 10:00	27 ^{**1}	2011/4/25 10:00	56 ^{**1}	168h00min	29 (0.2 μ Sv/h)
Aizubange Town Hall [41] (About108k mWest)	2011/4/23 11:43	2011/4/23 11:43	0 ^{**1}	2011/4/25 10:00	10 ^{**1}	46h17min	10 (0.2 μ Sv/h)
Yugawa Village Community Center [42] (About103k mWest)	2011/4/23 10:52	2011/4/23 10:52	0 ^{**1}	2011/4/25 11:00	19 ^{**1}	48h08min	19 (0.4 μ Sv/h)
Yanaizu Town Hall [43] (About117k mWest)	2011/4/14 9:57	2011/4/18 10:00	23 ^{**1}	2011/4/25 10:00	64 ^{**1}	168h00min	41 (0.2 μ Sv/h)
Mishima Town Hall [44] (About123k mWest)	2011/4/14 10:50	2011/4/18 10:00	19 ^{**1}	2011/4/25 10:00	51 ^{**1}	168h00min	32 (0.2 μ Sv/h)
Kaneyama Town Hall [45] (About133k mWest)	2011/4/14 11:47	2011/4/18 10:00	14 ^{**1}	2011/4/25 10:00	40 ^{**1}	168h00min	26 (0.2 μ Sv/h)
Shouwa Village Hall [46] (About126k mWest)	2011/4/14 13:48	2011/4/18 10:00	15 ^{**1}	2011/4/25 9:55	41 ^{**1}	167h55min	26 (0.2 μ Sv/h)
Aizumisato Town Hall Takada branch [47] (About105k mWest)	2011/4/14 15:27	2011/4/18 11:00	16 ^{**1}	2011/4/25 10:17	46 ^{**1}	167h17min	30 (0.2 μ Sv/h)
Minamiaizu joint government building [48] (About115k mWestSouthWest)	2011/4/8 9:38	2011/4/18 10:00	32 ^{**1}	2011/4/25 10:00	54 ^{**1}	168h00min	22 (0.1 μ Sv/h)
Shimogou Town Hall [49] (About104k mWest)	Under adjustment of the equipment						
Souma City Hall [50] (About43k mNorthNorthWest)	2011/3/29 13:38	2011/4/18 11:13	396 ^{**1}	2011/4/25 10:10	506 ^{**1}	166h57min	110 (0.7 μ Sv/h)
Shinchi Town Hall [51] (About52k mNorthNorthWest)	Under adjustment of the equipment						
Minamisouma City Kashima office [52] (About32k mNorth)	2011/3/29 15:40	2011/4/18 12:40	511 ^{**1}	2011/4/25 11:16	671 ^{**1}	166h36min	160 (1.0 μ Sv/h)
Bajikouen [53] (About20k mNorthWest)	2011/3/29 16:50	2011/4/18 13:37	1207 ^{**1}	2011/4/25 12:22	1582 ^{**1}	166h45min	375 (2.2 μ Sv/h)
Ishigami junior high school(Minami Soma city) [54] (About25k mNorthNorthWest)	2011/3/29 17:12	2011/4/18 13:55	896 ^{**1}	2011/4/25 12:48	1154 ^{**1}	166h53min	258 (1.5 μ Sv/h)
Tsushima elementary school(Namie Town) [55] (About29k mNorthWest)	2011/3/30 11:40	2011/4/18 15:05	6700 ^{**1}	2011/4/25 14:10	8550 ^{**1}	167h05min	1850 (11.1 μ Sv/h)
Iwakioota Station [56] (About21k mNorth)	2011/3/29 16:22	2011/4/18 13:21	381 ^{**1}	2011/4/25 12:07	483 ^{**1}	166h46min	102 (0.6 μ Sv/h)
Minamisouma Town Hall [57] (About24k mNorth)	2011/3/30 15:10	2011/4/18 13:07	359 ^{**1}	2011/4/25 14:59	472 ^{**1}	169h52min	113 (0.7 μ Sv/h)
Iitate Village Hall [58] (About39k mNorthWest)	2011/3/30 13:20	2011/4/18 11:33	2081 ^{**1}	2011/4/25 13:06	2700 ^{**1}	169h33min	619 (3.7 μ Sv/h)
Yamakiya Post Office [59] (About38k mNorthWest)	2011/3/30 13:54	2011/4/18 12:23	1334 ^{**1}	2011/4/25 16:21	1738 ^{**1}	171h58min	404 (2.3 μ Sv/h)
Katsurao Village Hall [60] (About25k mWest)	2011/3/30 12:20	2011/4/18 15:23	932 ^{**1}	2011/4/25 14:30	1286 ^{**1}	167h07min	354 (2.1 μ Sv/h)
Futatsu-numa Park [61] (About24k mSouth)	2011/4/1 15:30	2011/4/18 13:40	469 ^{**1}	2011/4/25 13:06	604 ^{**1}	167h26min	135 (0.8 μ Sv/h)
Iwaki joint government building [62] (About43k mSouthSouthWest)	2011/3/30 13:00	2011/4/18 18:00	315 ^{**1}	2011/4/25 10:00	378 ^{**1}	160h00min	63 (0.4 μ Sv/h)

* 1 the readings are measured by pocket dosimeter

Sampling Point (Distance from Fukushima Dai-ichi NPP)	Installation Date and Time	Date and Time (last monitoring) (x)	Readings (last monitoring) (a) (μ Sv)	Monitoring Date and Time (y)	Reading of Integrated Dose (b) (μ Sv)	Accumulated Time (z = y - x)	Reading of integrated Dose (c = b - a)
							Average does per hour (c/z)
Iwaki city Nakoso Branch Office [63] (About 61 k m SouthSouthWest)	2011/4/1 12:35	2011/4/18 11:30	101 ^{**1}	2011/4/25 10:40	132 ^{**1}	167h10min	31 (0.2 μ Sv/h)
Kawamae Station [64] (About 35 k m SouthWest)	2011/4/1 16:50	2011/4/18 15:08	168 ^{**1}	2011/4/25 14:35	221 ^{**1}	167h27min	53 (0.3 μ Sv/h)
Yumoto High School [65] (About 51 k m South)	2011/4/1 14:10	2011/4/18 12:10	222 ^{**1}	2011/4/25 11:20	314 ^{**1}	167h10min	92 (0.6 μ Sv/h)
Kairyu no Sato Center [66] (About 28 k m South)	2011/4/1 15:10	2011/4/18 13:20	407 ^{**1}	2011/4/25 12:30	513 ^{**1}	167h10min	106 (0.6 μ Sv/h)

Notes)

- Reading by : Fukushima Pref. (Emergency Monitoring Unit)
- Sampling point : 1 m from ground
- The figures of 0.0 in the column "Date and Time (last monitoring)" indicate that there was new installation in the area.
- [26]: The installation location has been changed from last time.
- Measurements by pocket dosimeters and integrated values of readings with survey meters for the air dose rate (at the same point) are not always same due to those devices' characteristics.

The number of Sampling Point used to be described as [Pref.#] in Report No.1&No.2 is changed to as [#] by Report No.3. (#:Numeric Character)

Readings of Fukushima Pref. Air Dose Rate (Northern part ,Midland, South,Aizu, South Aizu)

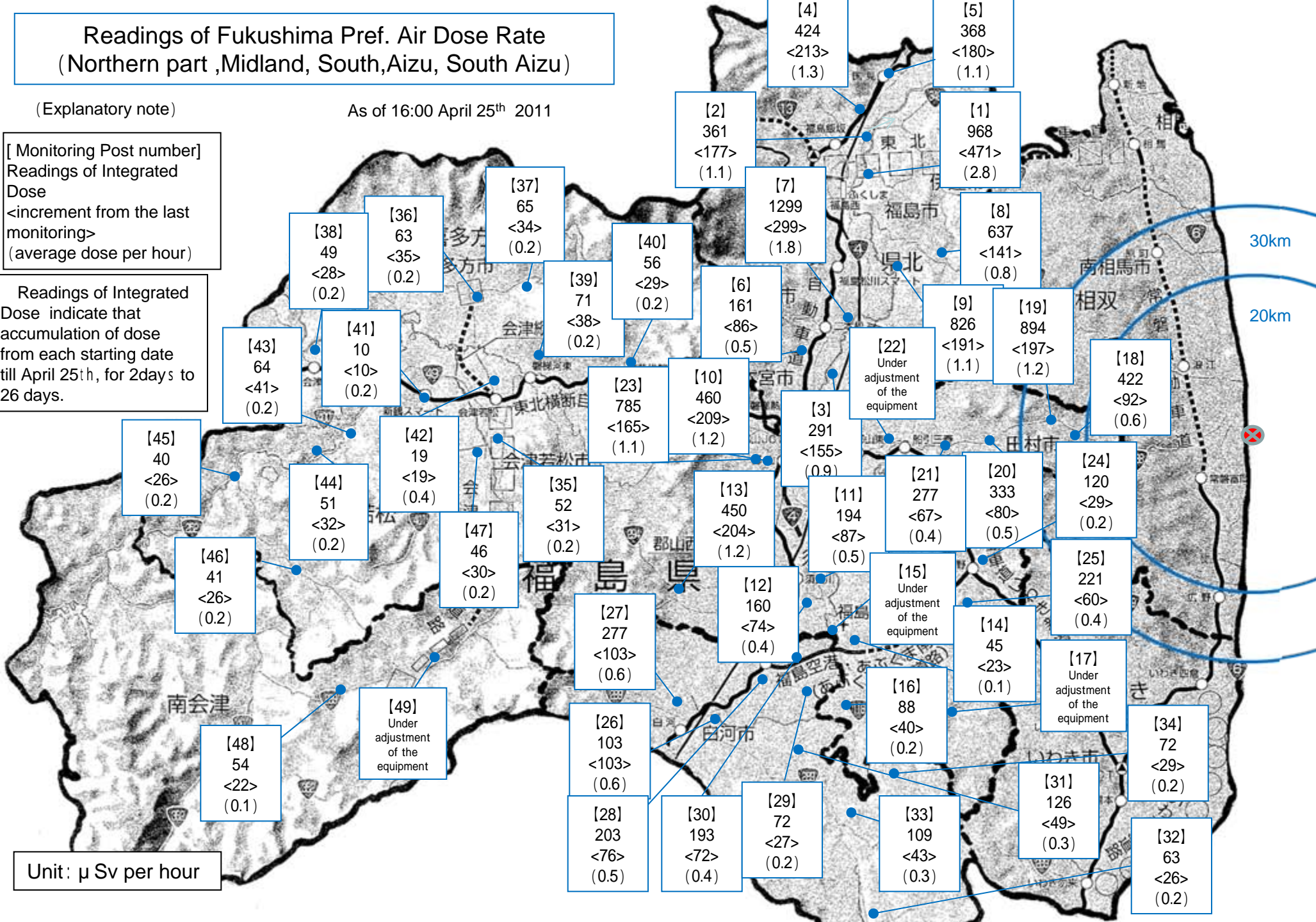
(Explanatory note)

As of 16:00 April 25th 2011

[Monitoring Post number]
Readings of Integrated
Dose
<increment from the last
monitoring>
(average dose per hour)

Readings of Integrated
Dose indicate that
accumulation of dose
from each starting date
till April 25th, for 2days to
26 days.

Unit: μ Sv per hour



Readings of Fukushima Pref. Air Dose Rate (Sousou, Iwaki)

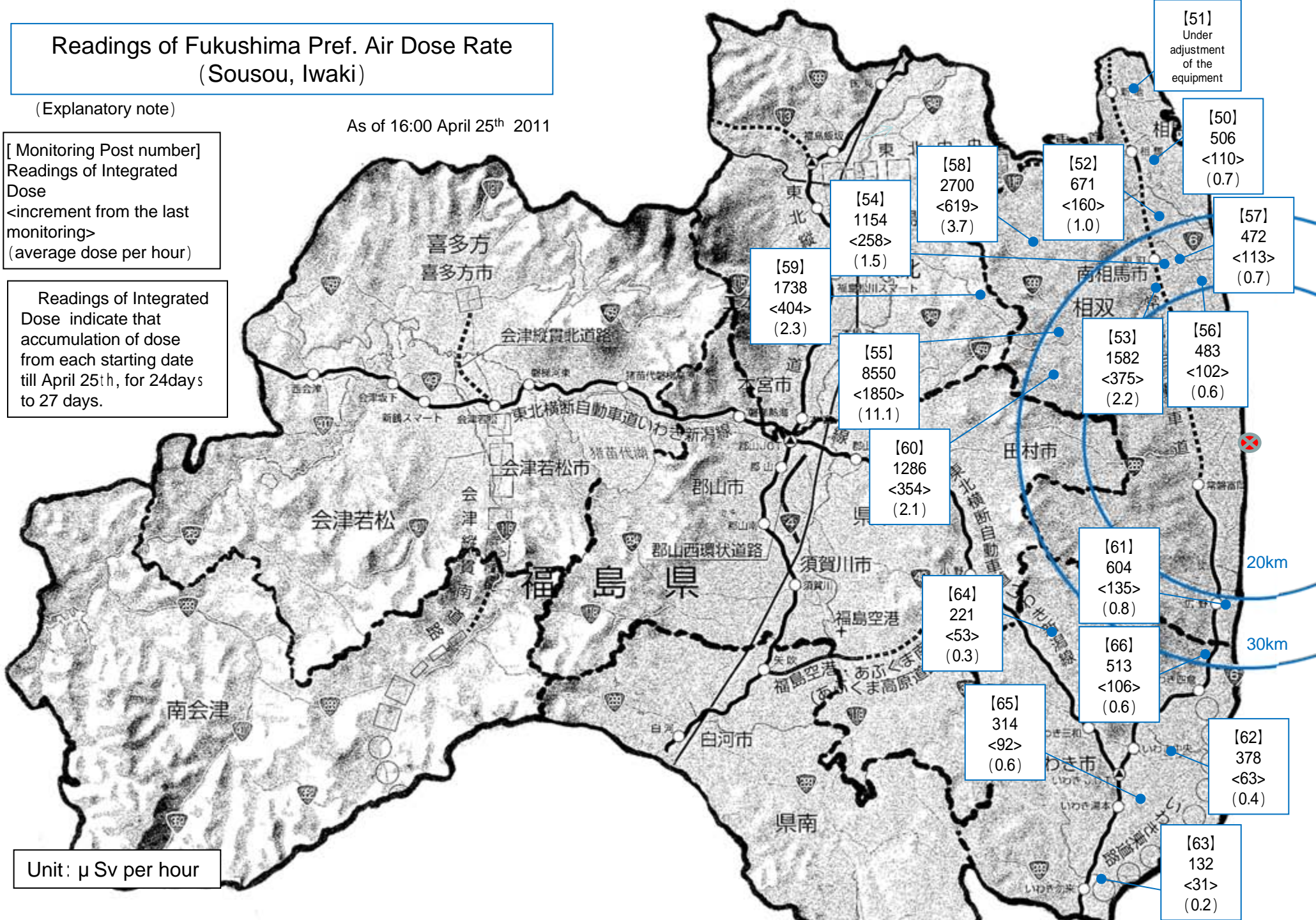
(Explanatory note)

As of 16:00 April 25th 2011

[Monitoring Post number]
Readings of Integrated
Dose
<increment from the last
monitoring>
(average dose per hour)

Readings of Integrated
Dose indicate that
accumulation of dose
from each starting date
till April 25th, for 24days
to 27 days.

Unit: μ Sv per hour



[51]
Under
adjustment
of the
equipment

[50]
506
<110>
(0.7)

[57]
472
<113>
(0.7)

[53]
1582
<375>
(2.2)

[56]
483
<102>
(0.6)

[54]
1154
<258>
(1.5)

[59]
1738
<404>
(2.3)

[55]
8550
<1850>
(11.1)

[60]
1286
<354>
(2.1)

[64]
221
<53>
(0.3)

[61]
604
<135>
(0.8)

[66]
513
<106>
(0.6)

[65]
314
<92>
(0.6)

[62]
378
<63>
(0.4)

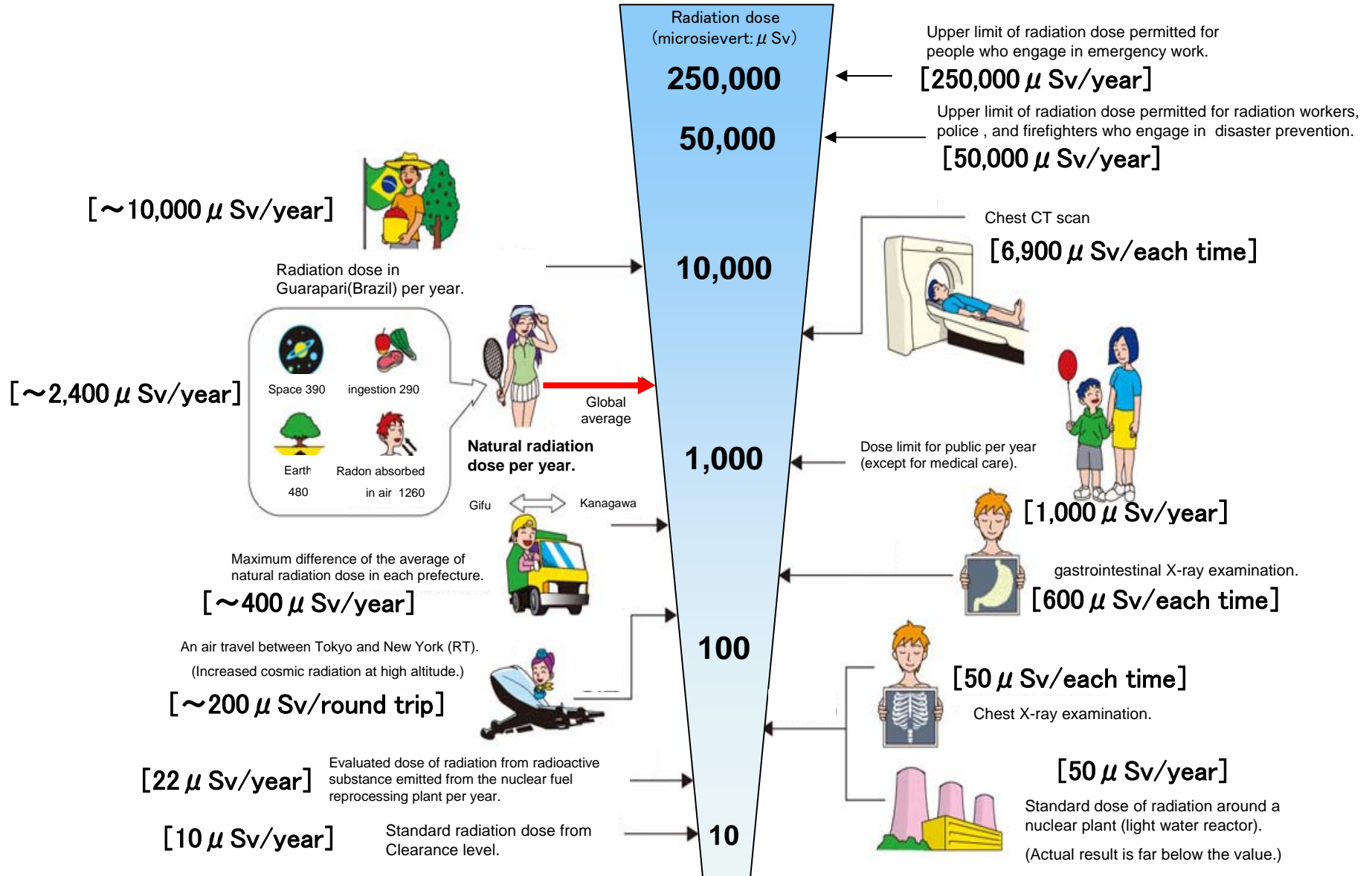
[63]
132
<31>
(0.2)

20km

30km

Radiation in Daily-life

※Unit : μSv



※ Sv [Sievert] = Constant of organism effect by kind of radiation (※) \times Gy [gray]

※ It is 1 in case of X ray and γ ray.