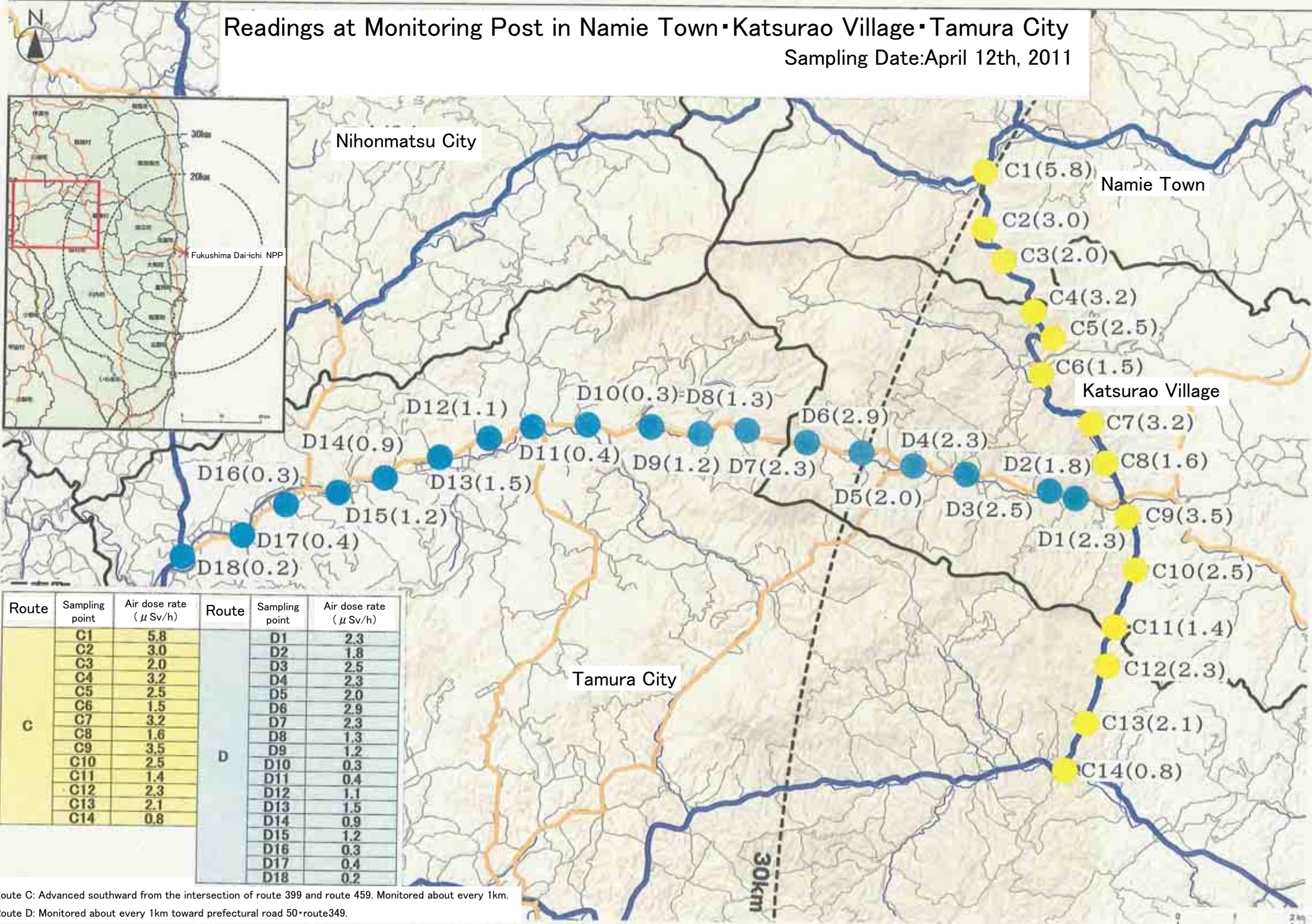


# Readings at Monitoring Post in Namie Town • Katsurao Village • Tamura City

Sampling Date: April 12th, 2011

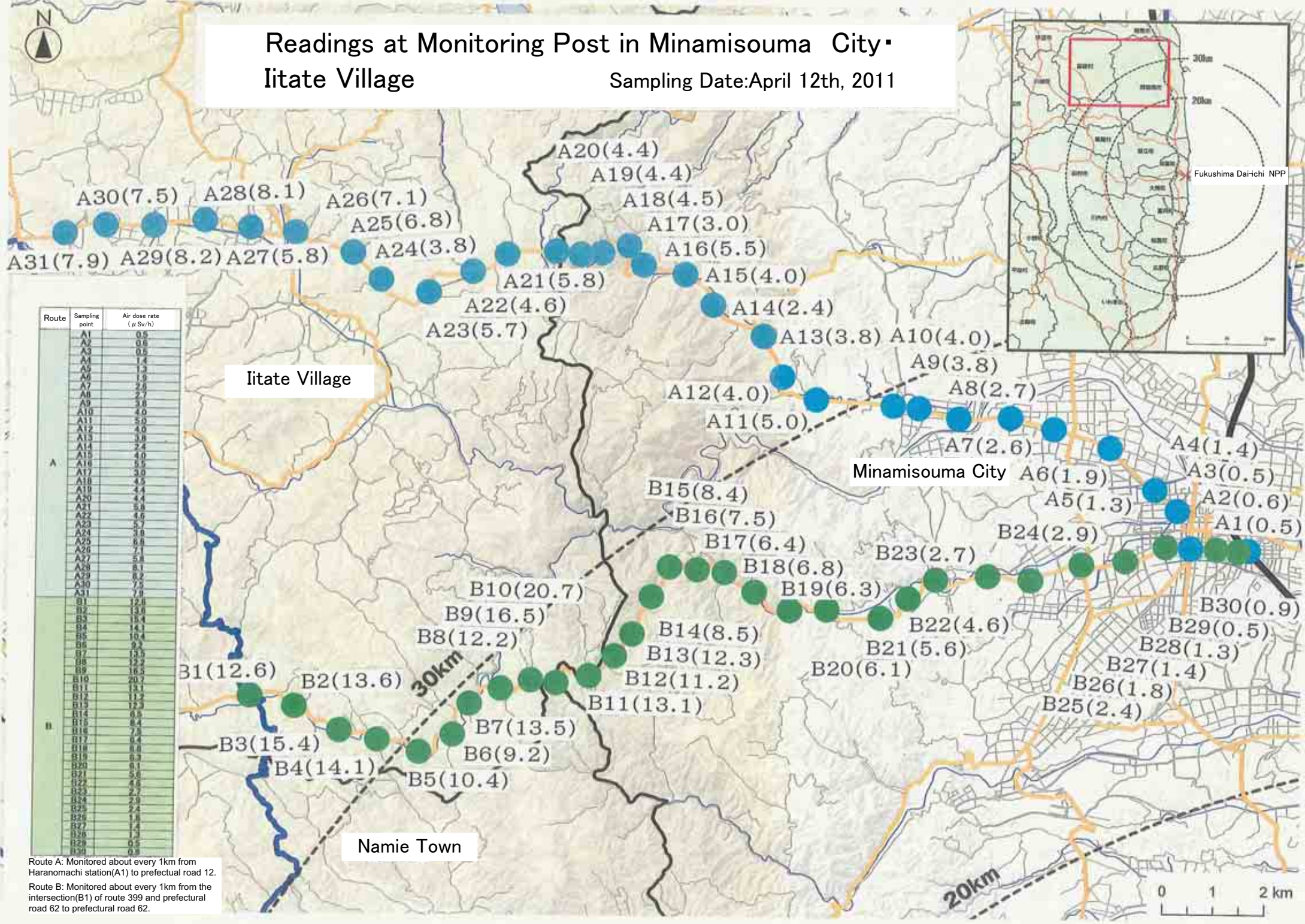


Route	Sampling point	Air dose rate ( $\mu$ Sv/h)	Route	Sampling point	Air dose rate ( $\mu$ Sv/h)
C	C1	5.8	D	D1	2.3
	C2	3.0		D2	1.8
	C3	2.0		D3	2.5
	C4	3.2		D4	2.3
	C5	2.5		D5	2.0
	C6	1.5		D6	2.9
	C7	3.2		D7	2.3
	C8	1.6		D8	1.3
	C9	3.5		D9	1.2
	C10	2.5		D10	0.3
	C11	1.4		D11	0.4
	C12	2.3		D12	1.1
	C13	2.1		D13	1.5
	C14	0.8		D14	0.9

Route C: Advanced southward from the intersection of route 399 and route 459. Monitored about every 1km.  
 Route D: Monitored about every 1km toward prefectural road 50 • route 349.

# Readings at Monitoring Post in Minamisouma City Iitate Village

Sampling Date: April 12th, 2011



Route A: Monitored about every 1km from Haranomachi station(A1) to prefectural road 12.  
Route B: Monitored about every 1km from the intersection(B1) of route 399 and prefectural road 62 to prefectural road 62.

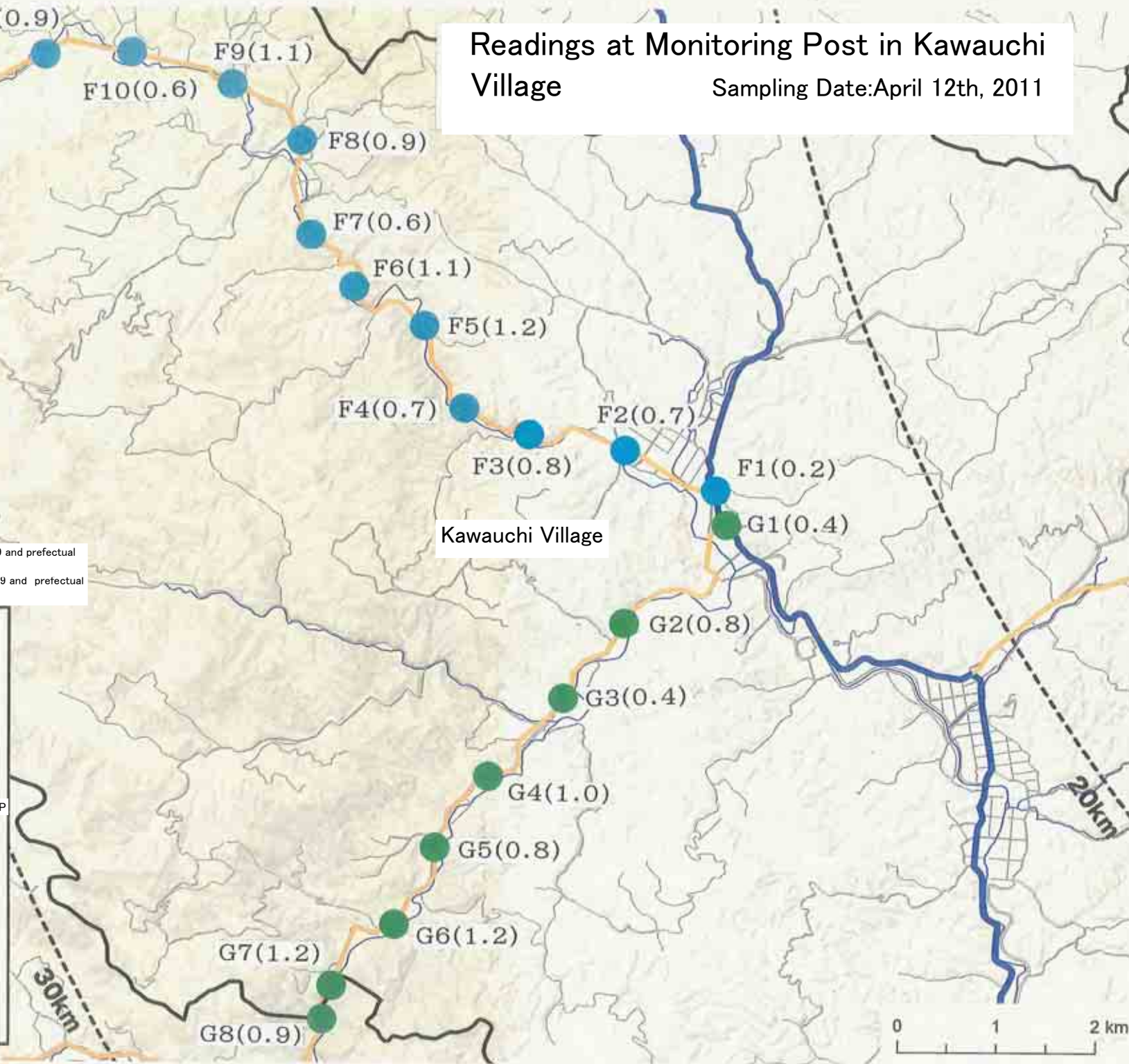
# Readings at Monitoring Post in Kawauchi Village

Sampling Date: April 12th, 2011

Route	Sampling point	Air dose rate ( $\mu\text{Sv/h}$ )
F	F1	0.2
	F2	0.7
	F3	0.8
	F4	0.7
	F5	1.2
	F6	1.1
	F7	0.6
	F8	0.9
	F9	1.1
	F10	0.6
	F11	0.9
G	G1	0.4
	G2	0.8
	G3	0.4
	G4	1.0
	G5	0.8
	G6	1.2
	G7	1.2
	G8	0.9

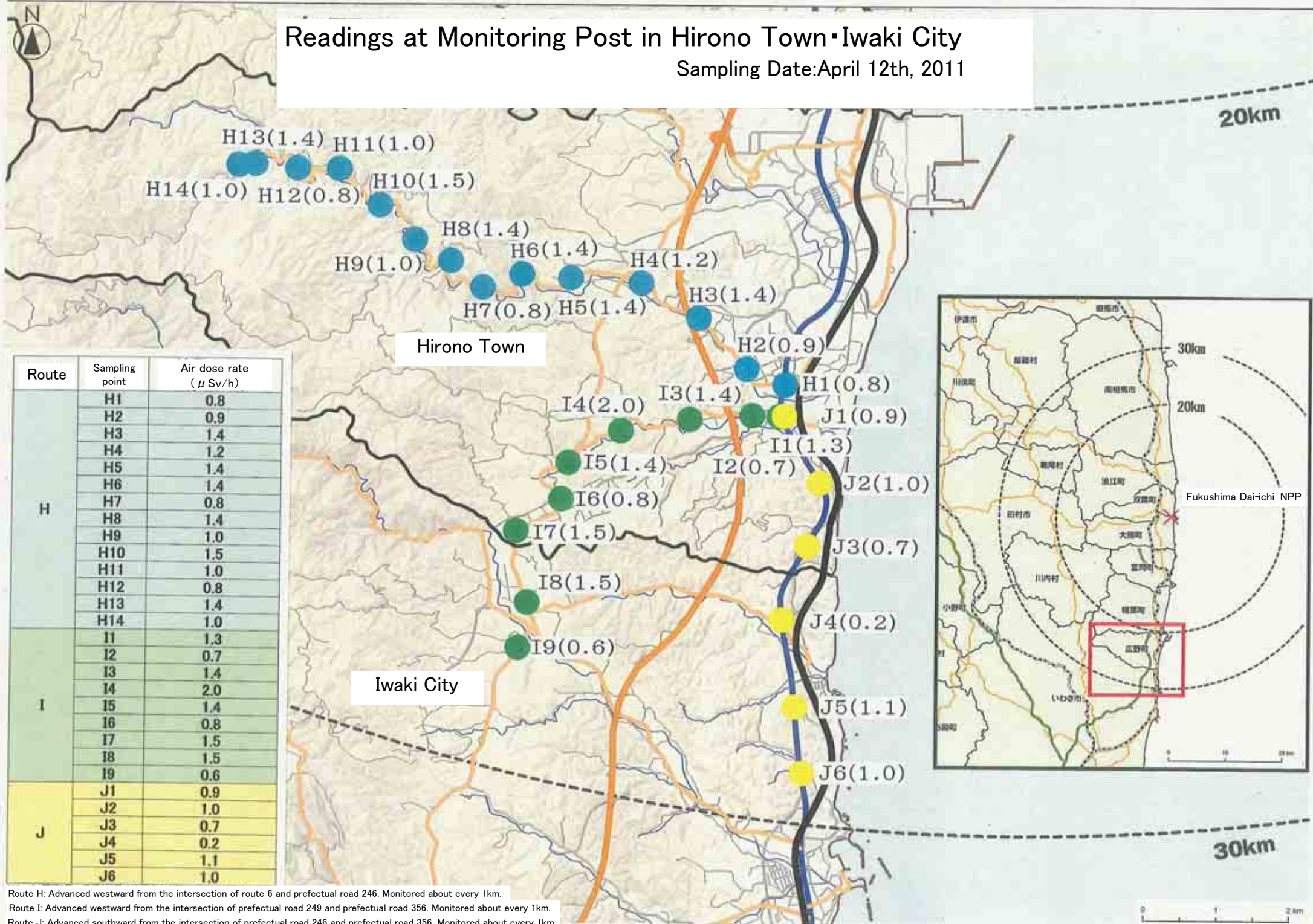
Route F: Advanced northwestward from the intersection of route 399 and prefectural road 112. Monitored about every 1km.

Route G: Advanced southwestward from the intersection of route 399 and prefectural road 36. Monitored about every 1km.



# Readings at Monitoring Post in Hirono Town・Iwaki City

Sampling Date: April 12th, 2011



Route H: Advanced westward from the intersection of route 6 and prefectural road 246. Monitored about every 1km.

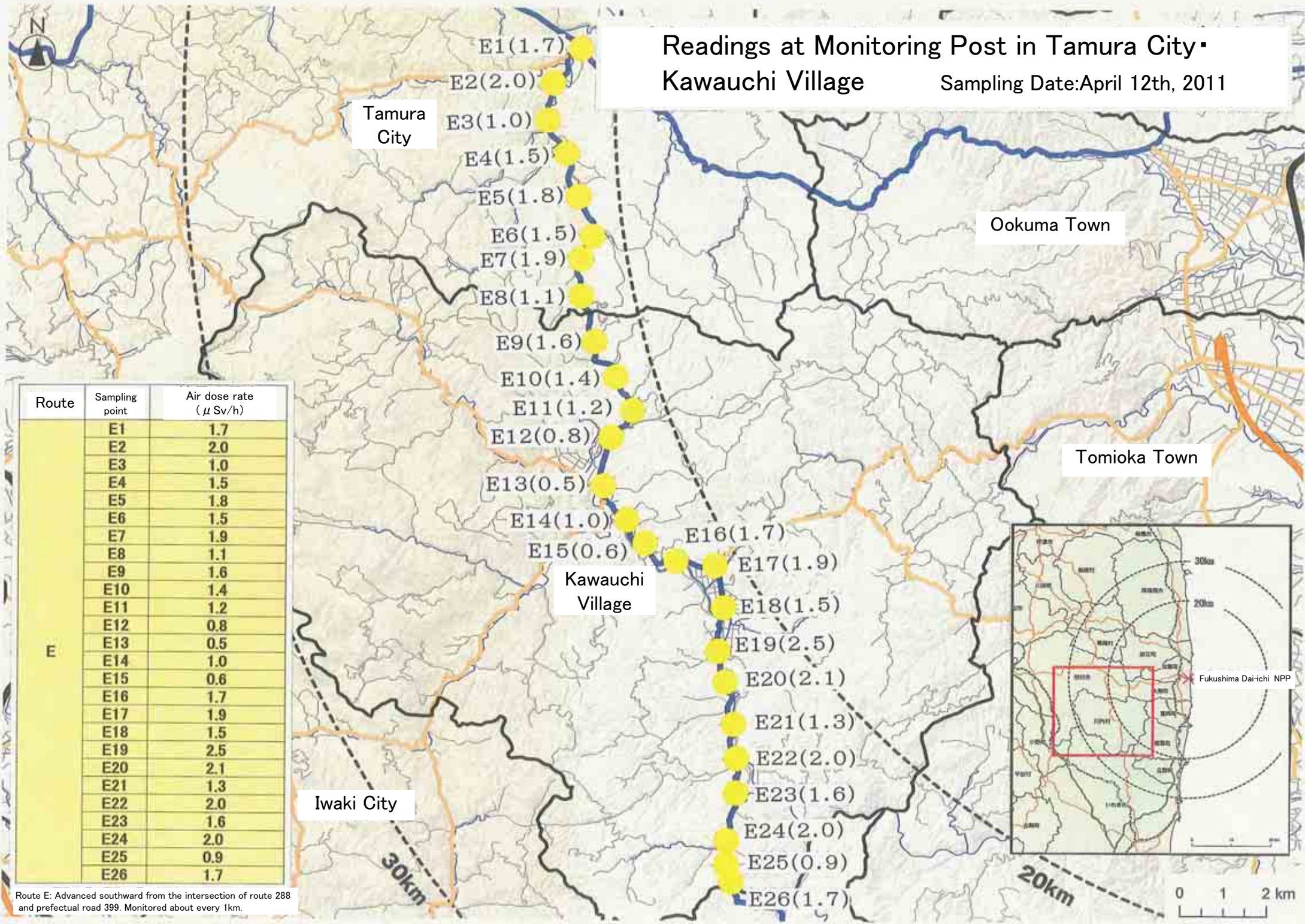
Route I: Advanced westward from the intersection of prefectural road 249 and prefectural road 356. Monitored about every 1km.

Route J: Advanced southward from the intersection of prefectural road 246 and prefectural road 356. Monitored about every 1km.



# Readings at Monitoring Post in Tamura City Kawauchi Village

Sampling Date: April 12th, 2011



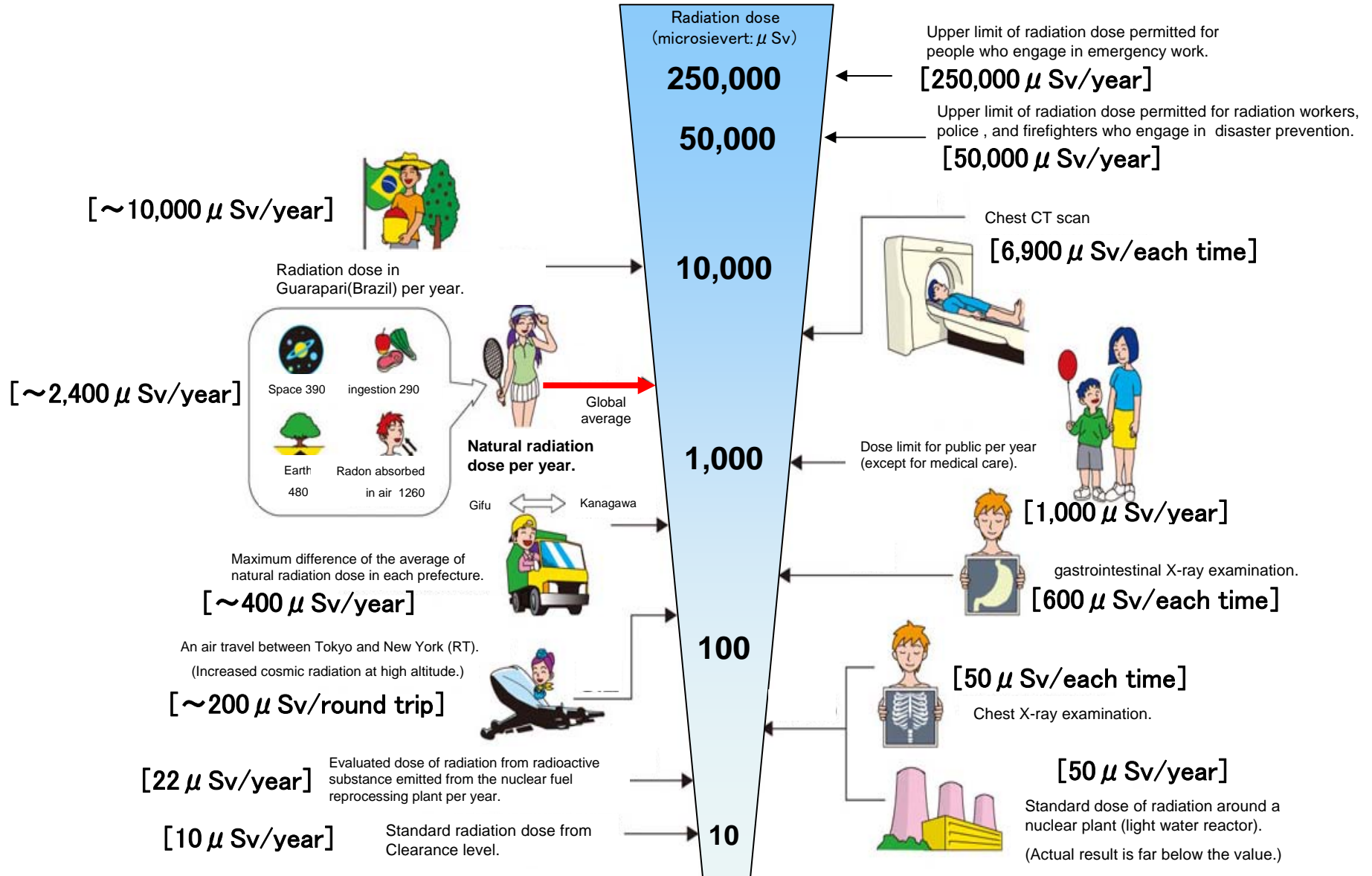
Route	Sampling point	Air dose rate ( $\mu$ Sv/h)
E	E1	1.7
	E2	2.0
	E3	1.0
	E4	1.5
	E5	1.8
	E6	1.5
	E7	1.9
	E8	1.1
	E9	1.6
	E10	1.4
	E11	1.2
	E12	0.8
	E13	0.5
	E14	1.0
	E15	0.6
	E16	1.7
	E17	1.9
	E18	1.5
	E19	2.5
	E20	2.1
	E21	1.3
	E22	2.0
	E23	1.6
	E24	2.0
	E25	0.9
	E26	1.7

Route E: Advanced southward from the intersection of route 288 and prefectural road 399. Monitored about every 1km.



# Radiation in Daily-life

※Unit :  $\mu\text{Sv}$



※  $\text{Sv}$  [Sievert] = Constant of organism effect by kind of radiation (※)  $\times$  Gy [gray]

※ It is 1 in case of X ray and  $\gamma$  ray.