

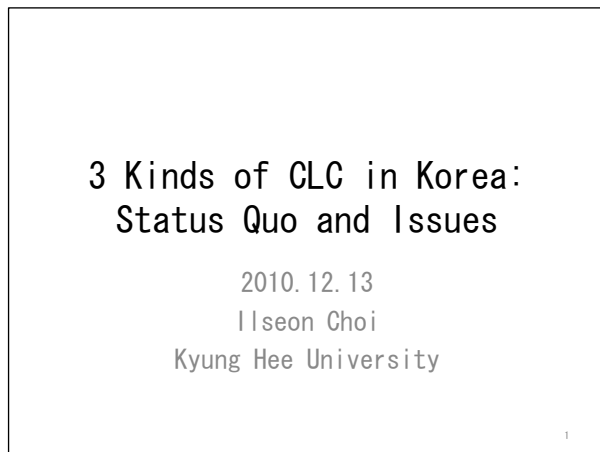
韓国(2): 韓国における3種類のCLC -現状と課題-

チェ・イルソン

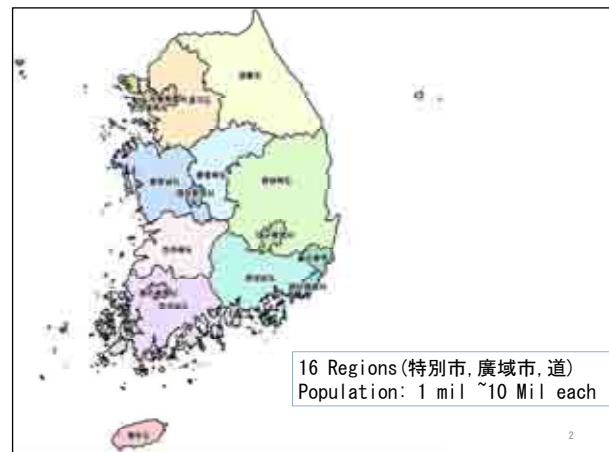
慶熙大学校(キョンヒ大学校) 教育大学院 准教授

Mr. Ilseon Choi

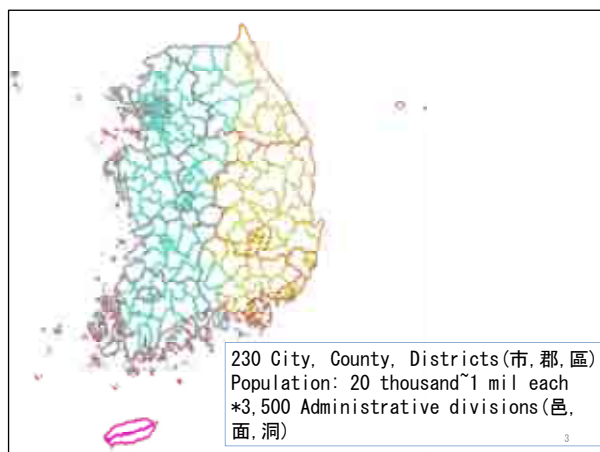
Assistant Professor, Graduate School of Education Kyung Hee University, Republic of Korea



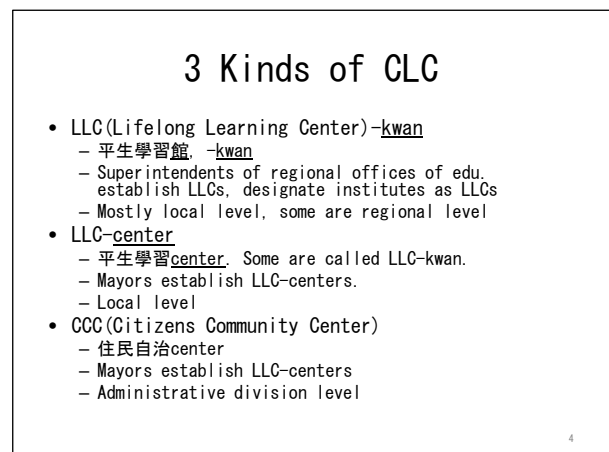
1



2



3



4

## LLC-kwan

- Duties
  - Provision of lifelong edu. programs for local residents
- Two types of LLC-kwan
  - Type I: Institutes designated by superintendents as LLCs in Libraries, universities, NGOs...
  - Type II: Established by superintendents.
- Governance
  - Adjunct to an institute(type I) or a department of regional edu. office(type II)

4

5

- Lifelong Education Act 2000
  - Superintendents should operate LLC
  - 208 institutes designated in 2001, total 404 in 2009
  - Lifelong Education Act revised in 2007
    - Superintendants establish, designate or operate
    - Act 2007 added that Mayors establish or financially support
- Budget
  - Type I: Subsidy from provincial edu. office
  - Type II: Budget of provincial edu. office

5

6

- Total LLC-kwans: 404
  - Established by State of Local Government: 269
  - By Corporation: 119
- Staffs total: 1,933
  - Certified Lifelong Educators: 437
- Learners for a year: 613,662
  - Adults 46%, Children 26%, Seniors 14%, Youths 5%, Combined 9%
- Programs for a year: 13,152
  - Arts & Physical 43%, Humanities 31%, Education 10%, Soc. Sciences 6%, Nat. Sciences 3%, Others 7%

6

7

## LLC-center

- Duty
  - Provision of lifelong edu. programs to citizens
- 76 Lifelong Learning Cities as the background of LLC-centers
  - mid-1990 Changwon city initiated LL City
  - 1999 Kwangmyung city declared LL City
  - 2001 LL City project was initiated by Ministry of Education, Science and Technology (MEST).
- 117 of 230 Local governments operate LLC-center

7

8

- Governance
  - Lifelong edu. council
  - Council composed of local superintendants, members of city council, Lifelong edu. professionals, Heads of LL institutes or organizations.
- Budget
  - Local government budget
  - Mayors' strong support for LLC-centers
- Lifelong Education Act 2007
  - Mayors may establish or financially support LLC-kwan

8

9

## CCC (Citizens Community Center)

- '3rd sector'
  - Reorganizing administrative division offices
  - Local autonomy community by civil participation
  - 2,891 NGOs engaged in CCCs
- 5 Duties
  - Culture/leisure, Civil education, Public support, Community development, Citizen autonomy
  - LLL is 1 of 5 duties. But weight about 50%
- Total 2,621 CCCs (75% of 3,500 admin. divisions)
  - Urban: 1,610 Rural: 1,011

9

10

- Volunteers: 102,497
  - Program support 15%, facility management 8%, instructor 6%, program management 6%, others 65%
- Programs total: 31,746
  - Leisure/art 53%, Civil edu. 18%, Welfare 9%, Civil participation 7%, community development 6%, Others 7%
- Governance
  - CCC council
- Budget
  - Subsidy from local governments and fund-raising

10

11

## Issue 1 Local governments' participation

- Strict division bt. edu. administration and public administration in Korea.
  - Education by superintendents and public administration by governors and mayors.
- LLE act 2007 article 20, 21
  - Governors may establish, or designate and operate regional NILE
  - Mayors may establish or financially support LLC-kwan
- A chance to level up Korean LLE
  - Superintendants' negligence of LLE
  - Mayors' strong interest and support in LLE
  - 50% of local governments operate LLC-centers and established municipal ordinance of LLL.

12

12

- Symbolic event in Korean edu. history!
  - Discussion about the merge of educational admin. and public admin., especially in the area of formal schooling. But no progress. Almost no cooperation between the two.
  - As the regional and local governments participated in LLE, the ideal of the merge of the 2 admin. are initiated.
  - Regional NILEs are being established by governors.
  - Big controversy over Gyeonggi province' s establish of Bureau of Lifelong Education in 2010.

13

13

## Issue 2 Role confusion

- Who is responsible for local LLC-kwan?
  - Superintendents or mayors? especially for type II.
- LLC-center has legal basis?
  - LLC-center can use the term LLC-kwan of LLE act?
  - LLC-centers has been established according to municipal ordinances.
  - LLE act Article 21 can be interpreted as the legal basis of LLC-centers
- Prospects
  - Type I LLC-kwans will decrease, type II will increase.
  - LLC-centers increase and will take the leading CLC role.
  - CCCs perform their role as the basic unit of CLC.

14

14

## Issue 3 Civil participation and networking

- Local Autonomy resumed in 1988
  - Local Autonomy stopped by mil. coup in 1961
  - Local council election in 1991, governors and mayors in 1995
  - LLL as a key to animate local autonomy: CCC, LLL City
- Top-down approach in Lifelong Learning
  - The influence of 30 yrs. vacuum of local autonomy
  - Government-driven LLL projects since LLE Act 2000
  - Mayors' strong 'political' interest in LLL
- How to facilitate civil participation?
  - Village-building movement to rejuvenate a village through LLL.
  - CCC councils by citizens, an resistance to the intervention of admin.
  - Supporting study circle, Leadership training
- How to network local edu. resources?
  - Cooperation among 3 CLCs
  - Local universities, libraries, regional think-tanks, NGOs, businesses
  - LLL city as a network to support community LLL

15

15

## Issue 4 Financial and human resource

- Financial support needed
  - State and local government' s subsidies and support. LE act 2007, article 16.
  - LLL budget is 0.1% of MEST budget in 2010
  - Expanding LLL cities. LLL city project stopped in 2008
  - Subsidy for LLL programs and study circles
- LLL professionals needed
  - LLL institutes should employ Lifelong Educators. LE Act 2007. ex) 2 in each CLC with 20 staffs or more.
  - No or few LL professionals in CCCs
  - Staffs in LLC-centers are temporarily employed
  - Staffs in LLC-kwans type I hold additional position.
  - Instructors in CLCs in short-term contract. 50% in LLC-kwans hired less than 1 year

16

16

## References

- Ministry of Education, Science and Technology (MEST) (2008). 2008 Lifelong Education White Paper
- MEST (2009). 2009 Lifelong Education White Paper
- MEST (2008). National Report on the Development and State of ALE
- MEST (2009). Statistics of Lifelong Education
- Websites of 230 local governments.

17

17

Thank you

18

18