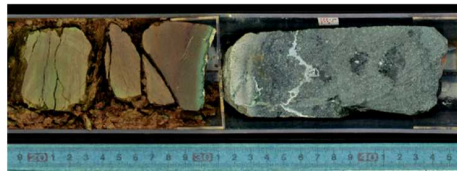


科学的成果2: <沈み込み帯構造・状態の把握>

深部プレート境界での新水源の発見

322 obtained just small sample of basement

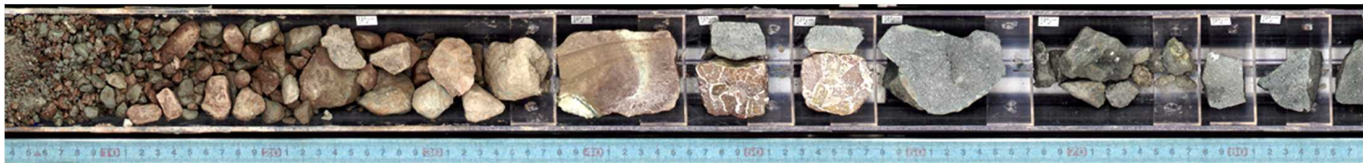


322-C0012A

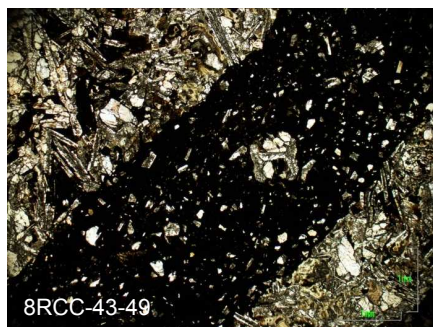
333-C0012E



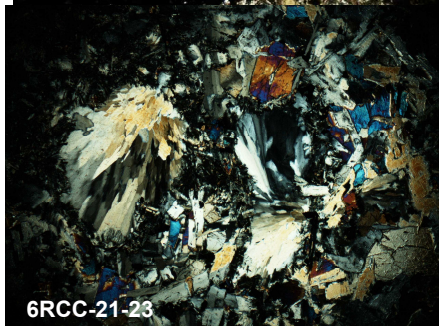
333-C0012F



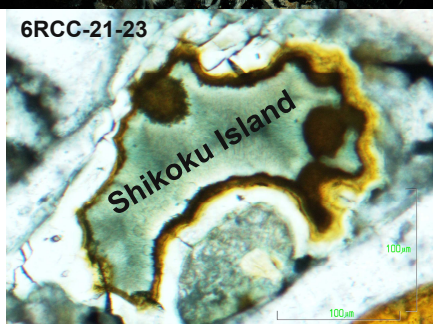
333-C0012G



8RCC-43-49



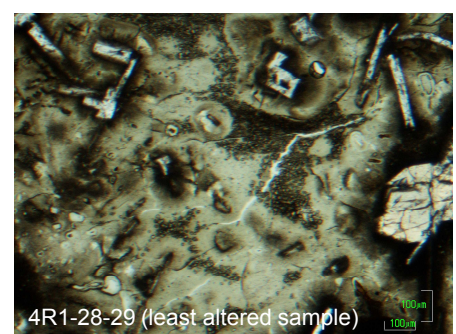
6RCC-21-23



6RCC-21-23

変質玄武岩

- 100 m cored, 18 m recovered
- Phyric basalt pillows and massive flows
- Localized oxidizing alteration
 - Accumulation of iron hydroxides in veins
- Pervasive alteration under reducing conditions
 - Replacement of olivines, glass and most plagioclases
 - Hydrus secondary phases: clay (saponite...) and zeolites (analcime...)
 - Pyrite occurrence



4R1-28-29 (least altered sample)