



# II



## **Trends and Development in Education, Science and Technology Policies**

### **Summary**



# 1

## Chapter

# The Creation of a Lifelong Learning Society and the Comprehensive Promotion of Educational Policies

“Lifelong Learning” refers to learning that people pursue over a lifetime such as education at home, school education, social education, and autonomous learning. The Basic Act on Education, Article 3 outlines the Government’s philosophy of Lifelong Learning by stating, “Efforts must be made to realize a society in which everyone can learn anywhere and at any time in their lives, and appropriately utilize outcomes from their learning to cultivate their own individuality, therefore enjoying a fulfilling life.” Japan’s Ministry of Education, Culture, Sports, Science and Technology (MEXT) works on policies to develop Lifelong Learning, seeking the cultivation of a “Lifelong Learning Society” where learning opportunities are “available for anybody, anywhere, at anytime” and where results lead to the overall improvement of the people.

With Japan facing rapid changes in the structures of industry and employment as well as fast-paced progress in globalization and information and communication technologies (ICT) utilization in recent years, its citizens must adapt to changes in society by improving their integrated “intelligence.” This includes the ability to identify and investigate one’s own challenges, the ability to think flexibly, the capability to apply one’s own knowledge and skills to solve problems, and the capability to establish good relationships with others.

Further, 2010 was the year when the reestablishment of community “ties” was recognized again as a great challenge in Japanese society. For example, one of the top 10 buzzwords for the year was Muen-Shakai, meaning “society in which individuals are isolated and have weak personal ties with one another.” Also, problems such as elderly people dying with no one around, known as “solitary death” in Japan, became pronounced. In order to reestablish community “ties,” it is vital that diverse participants such as neighborhoods/enterprises, NPOs (non-profit organizations), etc. cooperate with each other and with the Japanese government to improve the situation, leading to an improvement in integrated “intelligence” as well.

Such integrated “intelligence” can be developed only through various life experiences, in addition to experiences at school. “Learning” is key in responding to changes and issues which arise in society, and in building a vigorous society and economy which will enable individuals to live colorful, productive lives. Thus, the need to foster a “Lifelong Learning Society” is more pressing now than ever before.

# 2

## Chapter

# Further Enhancement of Children's Education

Education is an endeavor that aims to fully develop the personality of each and every child, and is essential for children to lead happy lives in the future. In addition, education has the mission of cultivating the children who will be the future leaders of Japan and society, and the importance of such education remains a constant that will remain unchanged across eras. Further, with factors such as intensifying competition from overseas, as society continues to change at a rapid pace, the education of children is becoming increasingly important.

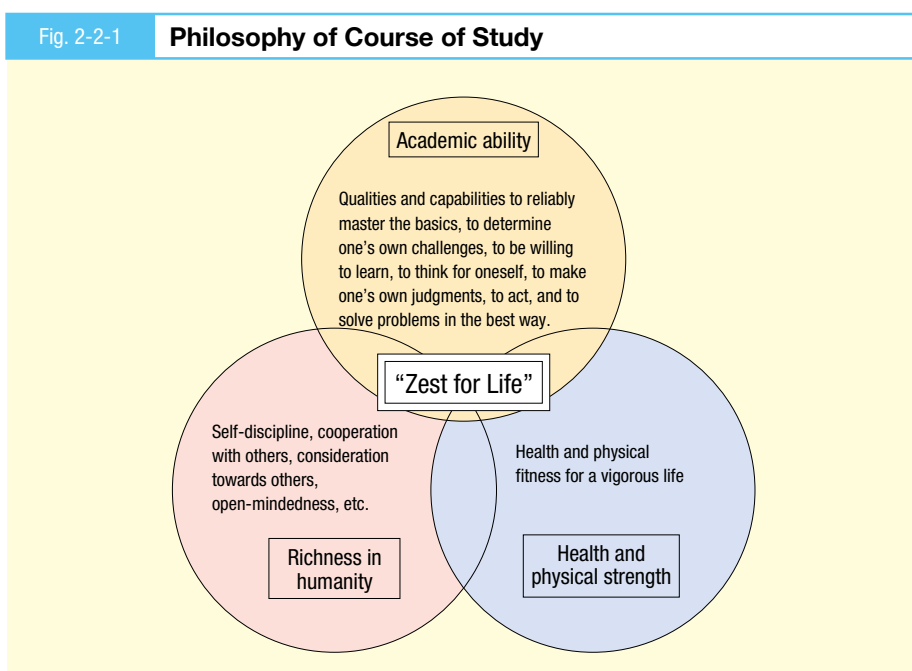
Considering this context, MEXT is implementing a wide range of policies to further enhance the children's education.

First, MEXT established Course of Study as general standard for Curriculum ranging from kindergartens through high schools, so that every child will receive a certain level of education in Japan regardless of his/her place of residence. MEXT revised the Course of Study\* for kindergartens as well as the Courses of Study\* for elementary and junior high schools in March 2008, and the Courses of Study\* for high schools and schools for special needs education in March 2009. These revisions place emphasis on training in the abilities to think, make decisions, and express oneself while fostering the acquisition of knowledge/skills in order to develop a "zest for life," one that values a balance of academic abilities, richness in humanity, health and physical strength. The revisions also aim to increase the number of classes and enhance content matter.

Further, to raise up scientific and technological personnel for the next generation, MEXT is fully engaging in promoting measures that aim to enhance education in science, technology and mathematics. This includes enhancing measures which foster interest among children in science and mathematics at various levels by uncovering and cultivating children's natural talents. At the same time, MEXT has been pursuing efforts to enhance foreign language education. For example, foreign language activities has been introduced at the elementary school level nationwide since the start of FY 2011.

Additionally, it is essential to enhance the quality and quantity of textbooks which are the primary teaching-material in school curriculums and which play an important role in students' pursuit of learning. Thus, the textbook authorization system is adopted to ensure compliance with the new Courses of Study\*.

Currently, there are a considerable number of issues relevant to student guidance, such as acts of violence, bullying, and non-attendance at school, which have become critical issues in education. MEXT endeavors to produce a compilation of cases as possible references at each school, and to enhance the educational counseling system so that such issues can be handled properly and so that school life becomes worthwhile and productive to the vast majority of children.



In recent years, we have been facing emerging social problems with young people, such as less attitudes concerning work and occupation, high turnover rates, and growing numbers of part-timers and those without employment, education or training. In order to ensure that children acquire attitudes towards work and careers in keeping with their developmental stages and are able to carve out lives for themselves with a clear sense of purpose, career education and vocational education at school is important. In January 2011, the Central Council for Education released a policy report entitled "Future vision on career education and vocational education at school." Taking the results into consideration, MEXT has determined to take steps to enhance career education.

Since school is a place for learning activities which aim to promote healthy growth and self-actualization in children, it is important to keep children safe and sound while they are there. MEXT is working on measures to promote dietary education, to deal with mental and physical health issues, and to ensure the safety of students both while they are at school and while traveling to and from school.

In addition, MEXT is working to promote an increased awareness of and respect for human rights through school and social education. This includes the following: the promotion of early childhood education, since it cultivates the foundation of the lifelong formation of character; the promotion of special needs education for children with disabilities, in consideration of their individual educational needs, which aims at full development of their capabilities and at their independence, and social participation; and the promotion of education which enhances international understanding and Overseas Japanese Children's Education in an effort to develop the nation's human resource capacity and nurture citizens who are able to flourish in our internationalized society.

Also, society as a whole must appropriately bear the costs of education so that children can receive the education necessary for future self-reliance, regardless their financial situation at home. MEXT is working to mitigate the household burden of educational expenses with measures adopted within schools such as making public high schools tuition-free and a High School Enrollment Support Fund System, both which started in April 2010.

With Japan's high school matriculation rate in recent years reaching approximately 98%, high schools play a key role as national educational institutions. This increase in the matriculation rate has led to a diversification in the abilities/aptitudes, interests/concerns and career plans of students. MEXT is seeking to enhance the high school education experience so that it cultivates the personality of each student.

Success of educational activities at schools depends significantly on the level of quality, ability and enthusiasm of the teachers more than anything. Thus, enhancing teacher quality and ability is an extremely important policy issue for educational enrichment of children. Therefore, the Japanese National Government has established an Educational Personnel Certification System for teacher qualification. Through this system,

Fig. 2-2-2

"Making Public High Schools Tuition-free/High School Enrollment Support Fund System" April 2011, from Posters/Leaflets



Daily life at kindergarten where children enjoy interactions with teachers and friends.  
(Nagoya City Kindergarten No. 2)

various measures are adopted at each stage, such as, for example, the development of teachers at universities, and the recruitment/training after hiring through prefectural boards of education. In addition, MEXT is investigating measures to improve teacher quality in a coordinated manner, with the goal to realize an even higher quality education.

To improve the capabilities of schools in the educational process, ensuring that there are a sufficient number of teachers is an important policy issue. To secure the required number of capable teachers needed nationwide and to maintain and improve educational levels, the Compulsory Education System Funded by Tax Revenues has been established at the expense of the National Government and the prefectures. This system guarantees the full amount of the salaries of teaching staff at public compulsory education schools (which account for the majority of compulsory education costs). Furthermore, in order to respond properly to various matters regarding school education, in April, 2011, MEXT established a system which allows for flexible legal standards for class sizes depending on the circumstances in the regions or at specific schools and legal standards for class size reduced the number of first-grade pupils per class from 40 down to 35.

Improvements of the educational environment and the educational quality at school cannot be achieved through the efforts of schools alone. It is important that parents/guardians, community people and schools deepen relationships and parents/guardians and community people support school management actively based on a shared understanding that they are responsible for the educational quality in the local community as well as school.

To make this happen, MEXT is promoting educational board to give schools more discretion on curriculum, budgets, etc. so that schools can initiate educational activities in a creative manner based on the realities of the community and children, and engage in autonomous and self-sustaining school management. At the same time, by spreading the School Management Council System (Community Schools) and other means, MEXT is promoting school development through coordination and cooperation among schools, parents/guardians and community.

# 3

## Chapter

# Various Developments in Universities

Higher education institutions such as universities, junior colleges, and colleges of technology are responsible for playing the central role in Japanese advanced education and research. They also contribute extensively to growth in the social economy through advanced research and the development of human resources with technical knowledge and skills in specific fields of study as well as in general education.

MEXT is planning to qualify assurance in higher education and improve educational competency with the Approval System of the Establishment and the Certification and Evaluation System. The former system is equivalent to a "preliminary review" and the latter system is equivalent to "post\_evaluation." MEXT is also promoting university reform in an effort to organize universities based on their uniqueness and advantages, or to improve their international competency. Moreover, MEXT is encouraging universities to disclose their educational information proactively so that they can fulfill their responsibilities as the public institutions and improve education and research levels through both internal and external evaluations.

Also concerning graduate schools, MEXT is working on the formation of a world-class education and research center. It is also planning to enhance organizational and systematic education, playing down a research-guidance bias that emphasizes the development of researchers. Rather, MEXT seeks to make this research center into a "locus of intelligence" which develops human resources capable of leading Japan's society, economy and culture, and also capable of making international contributions.

With acceleration in the mobilization of human resources due to rapid globalization, it is an urgent task for universities in Japan to promote interaction and cooperation among universities and the exchange of students of assured quality, as well as to develop people who can contribute internationally. MEXT is supporting efforts by universities to internationalize and form a center for exchange, and is making efforts for high-quality exchange, including expansion of the credit transfer system, such as the "Campus Asia" concept. In addition to these efforts, MEXT is working to support organization of leading graduate schools to train doctors who can lead the world, especially in emerging fields.

On the other hand, MEXT is also making progress in responding to various social challenges in Japan. For example, based on the severe current economic situation, MEXT supports measures for reduction or waivers of tuition and enrollment fees that are carried out by universities, and extends its scholarship loan program even wider so that students who have interest and ability do not have to give up studies. Regarding scholarship loans, MEXT aims for smooth operations, such as the establishment of systems of reduced return or grace payback periods for scholarships to mitigate the burden of those who have difficulty in paying back scholarship loans due to changes in their financial situation.

MEXT is also giving comprehensive support to universities that is making employment efforts and is working to help improve students' employ-ability both through the curriculum as well as through general supports outside of their field-of-study. MEXT is working to support prospective graduates in cooperation with related ministries; for example, it has made requests to economic / industry organizations to put the brakes on earlier and offer longer recruiting activities.

In addition, MEXT is promoting myriad efforts aimed at various developments in higher education such as expanding the functions of university hospitals to be the core of local medical care, improving university entrance procedures, and enhancing colleges of technology.

# 4

## Chapter

# Promotion of Private Schools

## Important Roles that Private Schools Play

Private school pupils/students/undergraduates account for approximately 80% for all university / junior colleges, approximately 30% for all high schools, close to 80% for all kindergartens, and more than 90% for all specialized training colleges and miscellaneous schools. It's clear that private schools contribute significantly to Japan's educational development. Further, in this society which is based on global knowledge and learning, each private school must foster unique educational research which responds to a diverse range of people's needs, and then each school must implement distinctive activities based on its own school motto or focus. In this way, private schools play an important role both in the quantity and quality of development in Japanese school education.

Therefore, making the promotion of private schools an important policy matter, MEXT is trying to maintain and improve education and research conditions, and to mitigate the study-related financial burden of registered students. In addition, in order to make operations more sound, MEXT is working to further enhance them by taking the following measures:

- (1) Providing assistance for operating costs such as the labor expense for teaching-staff and expenses related to education and research, and to designing facilities,
- (2) Offering loans through the Promotion and Mutual Aid Corporation for Private Schools of Japan measure,
- (3) Offering favorable taxation measures, and
- (4) Providing support to improve the school corporations.

Furthermore, the revised Private Schools Act has been enforced since April 1, 2005 so that school corporations which establish private schools can appropriately respond to recent rapid societal changes and take action against various challenges independently and with agility. The major revised points are 1) improvement in management and operation systems at school corporations; 2) disclosure of financial information to the parties concerned; and 3) reconsideration of organization of the Private Schools Council.

Every private school is expected to make progress in building a distinctive and attractive school that is responsible to meet the needs of its people, while making progress in maintaining and improving its operations through proactive disclosure of information related to educational content and financial status.

# 5

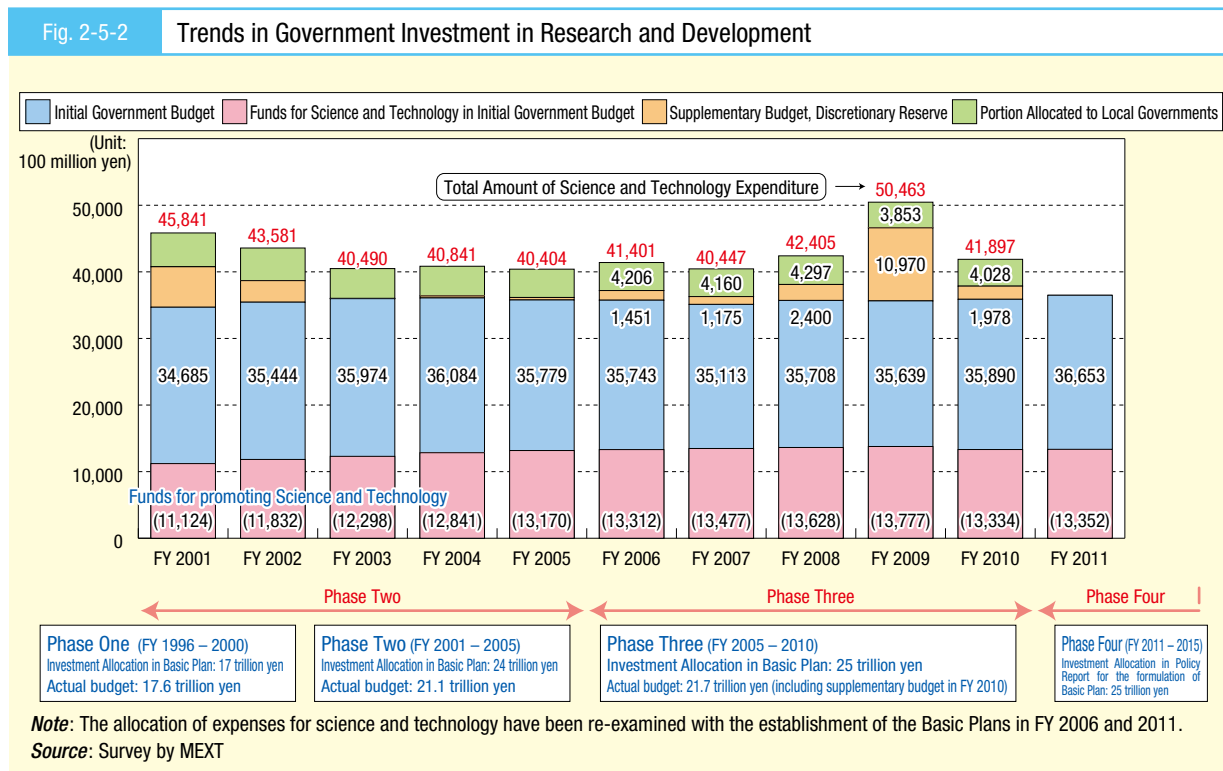
## Chapter

# The Comprehensive Promotion of Science and Technology Policy

## Current Issues, Background, and Future Direction — The Establishment of the 4<sup>th</sup> Science and Technology Basic Plan

In recent years, Japan and the world have experienced unprecedented change. The world is facing an escalation of global-scale problems and intensified competition for natural resources, energy and food. Further, with the People's Republic of China, India and other emerging countries gaining economic power, economic globalization is on the rise. Meanwhile, with a declining birthrate and aging population, Japan is confronting a decline in social and economic vitality as well.

Japan has been steadily and continuously encouraging advances in science and technology through Basic Plans established over the last 15 years, or three phases. These Basic Plans have evolved from the Science and Technology Basic Law, enacted in 1995. Actually, the increase in R&D investment and the reorganization of the science and technology system have resulted in a number of research outcomes and achievements. Still, there remain some concerns, as each result does not necessarily contribute to solving the social issues Japan is confronting and, due to tight fiscal circumstances, the government has barely increased its investment in research and development. Further, the nation has seen a decrease in positions available for young researcher at universities (Fig. 2-5-2, Fig 2-5-3).

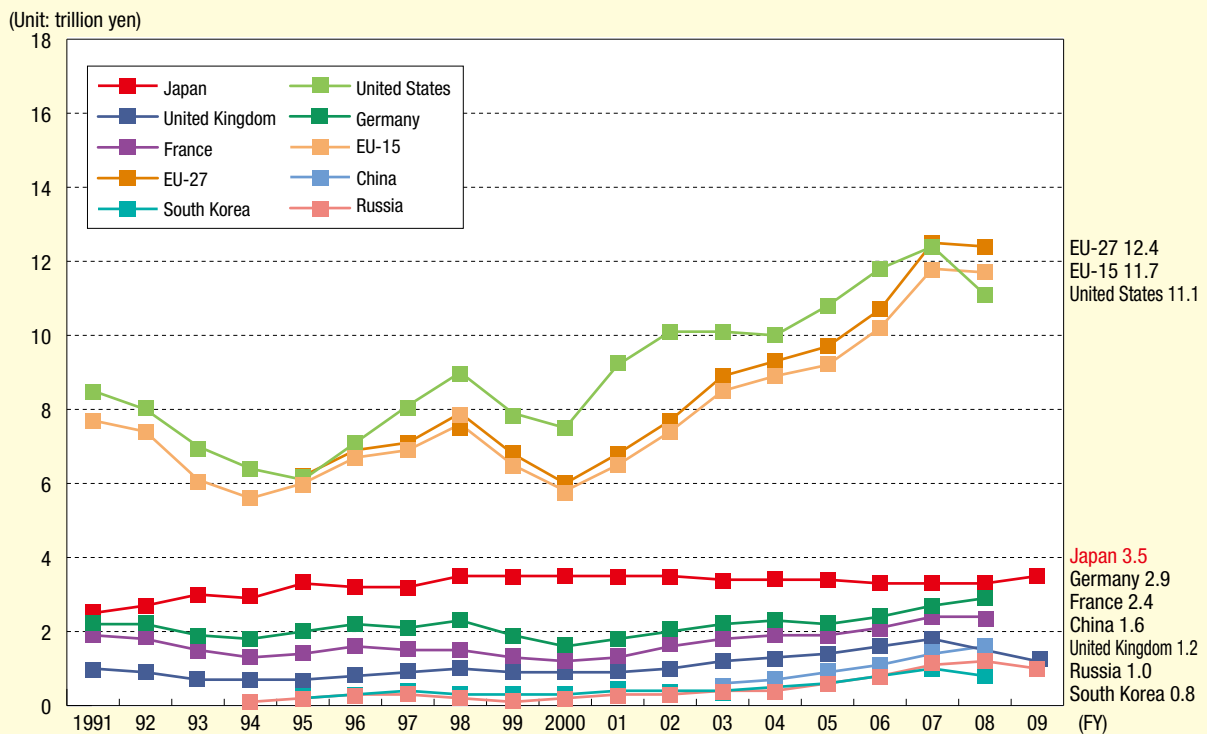


Based on an understanding of this current economic climate, the government planned to establish the 4th Science and Technology Basic Plan for the next five years beginning from FY 2011 in March 2011. However, the Great East Japan Earthquake on March 11, 2011 forced a revising of the plan.

Report for establishing the 4th Basic Plan, "Japan's Science and Technology Basic Policy Report" (December 24, 2010), states five visions of the country. These are (1) A country that achieves sustainable growth for years to come; (2) A country that realizes an affluent high-quality life for the people; (3) A country that possesses S&T as the foundation for national survival; (4) A country that takes the initiative in solving global issues; and (5) A country that continues to create "knowledge" assets and fosters S&T as a culture. Furthermore, this policy report Presented three basic concepts of future S&T policies:(1)Integrated development of "STI policies"; (2) Further focus on the "roles of human resources and the organizations"; and (3)Realization of a "Policy to be created and promoted together with society."

Fig. 2-5-3

## Trends in Government-Financed R&amp;D Expenditures in Selected Countries (IMF exchange rate conversion)

**Note:**

1. MEXT-estimated R&D expenditures and percentages for government-financed R&D expenditures (excludes Japan).
2. R&D expenditures for all countries include those for human and social sciences. For the Human and social sciences are not included in South Korea (Republic of Korea) data through FY 2006.
3. The U.S. figure for FY 2008 is provisional.
4. The UK figure for FY 2009 is provisional.
5. Germany's figures for FY 1992, 1994-96, 1998, 2000 and 2002 are estimated values.
6. The EU figures are estimates by Eurostat and OECD.

**Source:**

Japan, "Report on the Survey of Research and Development" Statistics Bureau, Ministry of Internal Affairs and Communications  
 EU: (R&D expenditures) Eurostat database  
 EU: (Government-financed R&D expenditures) "Main Science and Technology Indicators, Vol. 2010/2" OECD  
 Other countries: "Main Science and Technology Indicators, Vol. 2010/2" OECD

Keeping these fundamental ideals in mind, the Basic Policy Report is shifting from its current "focus by category" to a new "focus by responses to issues" in order to realize its principles. Specifically, for the "two major innovations as a pillar of growth," the Basic Policy Report is focusing on environment and energy ("Low carbon energy supply," "Highly efficient and smart use of energy," and "Greening of social infrastructure."). The 4th Basic Plan also is focusing on the medical, nursing and health arenas ("Development of innovative prevention care", "Development of new early diagnostic methods", "Realization of safe and highly effective treatment", and "Improvement of quality of life (QOL) of elderly/disabled persons and patients"). The Basic Policy Report also endeavors to help "Realizing an affluent and high-quality life for the public," "Strengthening the industrial competitiveness of Japan," "contribution to the solution of global issues," "Maintaining the basis of national existence," and "improvement and reinforcement of common infrastructure for S&T" as the "Response to the essential issues facing Japan." At the same time, the Basic Policy Report envisions a system reform for promoting STI, as well as strategic development of globally integrated activities

Moreover, embracing a vision of "enhancement of basic research and human resource development" in tandem with measures to address the important issues above, the Basic Policy Report states drastic enhancement of long-term basic research, development of human resources to lead S&T, and establishment of international-level research environment and infrastructure.

Furthermore, the Basic Policy Report envisions citizen participation in policy-making, scientific and technical communication, and reconstruction of the system of research and development to meet its goals of "Development of policies to be created and promoted together with society." In terms of R&D investment, the

Basic Policy Report has set a goal to encourage combined government and private sector investment to reach 4% of GDP or higher, and then made clear its target of approximately 25 trillion yen total during the term of the 4th Basic Plan. It also aims to raise government R&D investment to 1 % of GDP (estimation based on the assumption that government R&D investment is 1 % of GDP, and the average nominal GDP growth rate is 2.8% during that timeframe). (Fig. 2-5-4)

Fig. 2-5-4

## Japan's Science and Technology Basic Policy Report (December 24, 2010)

### I. Basic Understanding

#### 1. A tumultuous world and crisis in Japan

In today's world, dramatic changes in politics, society and economy are underway. Japan is no exception. Consequently, the recognized roles which science and technology play have altered significantly.

#### <Changes around the world>

- Emergence of global issues, intensified competition for natural resources and energy
- Emerging countries gaining economic power, increased economic globalization
- Changes in innovation systems, advances in the circulation of human brain capital of brain circulation

#### <Crises in Japan>

- Declining birthrate and aging population, producing an overall declining population, leading to a decline in social and economic vigor
- Long-term declining trend in industrial competitiveness

#### 2. Position of Science and Technology Basic Plan

It is a basic course of action that the government will pursue to implement of Japan's policies in science and technology in an integrated and systematic manner as a national strategy for the next five years. The government will carry this out by reviewing its New Growth Strategy for a broader perspective, in an effort to both refine and execute it in tandem with other important policies.

#### 3. Results and issues of the 3rd Science and Technology Basic Plan

- Individual achievements do not necessarily contribute to complete solutions for social problems.
- Although government investment is on the rise, the pace has recently slowed down.
- Decrease in university employment positions for young researchers, obstacles in maintaining and managing facilities and equipment.

#### 4. Principle of the 4th Science and Technology Basic Plan

- (1) Visions of the country
  - i) A country that achieves sustainable growth for years to come
  - ii) A country that realizes an affluent high-quality life for the people
  - iii) A country that possesses S&T as the foundation for national survival
  - iiii) A country that takes the initiative in solving global issues
  - iiiii) A country that continues to create "knowledge" assets and fosters S&T as a culture
- (2) Basic concepts of future S&T policies
  - i) Integrated development of "STI policies"
  - ii) Further focus on the "roles of human resources and the organizations"
  - iii) Realization of a "Policy to be created and promoted together with society"

### II. Promotion of the Two Major Innovations as a Pillar of Growth

#### 1. Basic Concept

Strategically promote innovations by science and technology in the environment/energy and medical/nursing-care/healthcare fields for overcoming limitations and creating new growth industries.

#### 2. Promotion of Green Innovation

- i) Low carbon energy supply, ii) Highly efficient and smart use of energy, and iii) Greening of social infrastructure

#### 3. Promotion of Life Innovation

- i) Development of innovative preventive care, ii) Development of new early diagnostic methods, iii) Realization of safe and highly effective treatment, and iv) Improvement of quality of life (QOL) of elderly/ disabled persons and patients

#### 4. System Reform for Promoting STI

- (1) Strengthening of the strategic promotion system for STI
  - i) Foundation of "STI Strategy Council (tentative name)"
  - ii) Strengthening "knowledge" networks among industry, university and government
  - iii) Establishment of "places" for industry-university-government collaboration (a base for open innovation, etc.)
- (2) Construction of new systems for STI
  - i) Environmental improvement for strengthening commercialization support
  - ii) Utilization of regulations/institutions for promoting innovation
  - iii) Establishment of regional innovation systems
  - iiii) Promotion of intellectual property strategies and international standardization strategies

### III. Response to the Essential Issues Facing Japan

#### 1. Basic Concept

Identification of the important issues which the National Government must address, and the focused promotion of measures for achieving success in those issues.

#### 2. Promotion of Measures for Achieving Success in Essential Issues

- (1) Realizing an affluent and high-quality life for the public
  - (2) Strengthening the industrial competitiveness of Japan
  - (3) Contribution to the solution of global issues
  - (4) Maintaining the basis of national existence
  - (5) Improvement and reinforcement of common infrastructure for S & T
- 3. System Reform to Achieve Success with Essential Issues**  
(Promotion of measures based on the driving policies outlined in II. 4.)

#### 4. Strategic Development of Globally Integrated Activities

- (1) Promotion of R&D for solving common issues in Asia  
(Plan for an Eastern Asia Science and Innovation Area, etc.)
- (2) New development of S&T diplomacy
  - i) Development of international activities taking advantage of the strengths of Japan
  - ii) Promotion of international activities concerning advanced S & T
  - iii) Promotion of the cooperation on global issues with developing countries
  - iiii) Enhancing the infrastructure for developing international activities for S&T

### IV. Enhancement of Basic Research and Human Resource Development

#### 1. Basic Concept

Improvement in measures to promote basic research and human resource development in tandem with Japan's response to essential issues

#### 2. Drastic Enhancement of Basic Research

- (1) Enhancement of creative and diverse basic research  
(Further expansion of grants-in-aid for scientific research)
- (2) Enhancement of globally top-level basic research  
(Formation of clusters of research-oriented universities, formation of world-class locations, etc.)

#### 3. Development of Human Resources to Lead S&T

- (1) Development of human resources capable of working actively in diverse scenes
  - i) Drastic enhancement of graduate school education  
(Creation of the opportunity for dialogue between industry and academia, the establishment of guidelines for promoting graduate school education, etc.)
  - ii) Support for entry into doctoral courses and diversification of career paths
  - iii) Engineer training and skill development

- (2) Training for creative quality researchers
  - i) Establishment of fair and highly transparent assessment systems
  - ii) Improvement of career paths for researchers
  - iii) Promoting the activities of female researchers
- (3) Development of human resources who can lead the next generation

#### 4. Establishment of International-Level Research Environment and Infrastructure

- (1) Improvement of R&D environments at universities and public research institutions
  - i) Development of facilities and equipment at universities
  - ii) Promoting the development and shared use of advanced research facilities and equipment
- (2) Development of intellectual infrastructure
- (3) Development of research information infrastructure

### V. Development of Policies to be Created and Promoted together with Society

#### 1. Basic Concept

Development of measures to gain the understanding, support and trust of the people in the effort to enact "policy for the societal and public good"

#### 2. Deepening the Relations between Society and STI

- (1) Promotion of STI policies from the public viewpoint
  - i) Further involvement of the public with policy planning and promotion
  - ii) Response to ethical/legal/social issues
  - iii) Training and securing of human resources who connect society with STI policies
- (2) Promotion of S&T communication activities

#### 3. Promotion of Effective STI Policies

- (1) Enhancement of policy planning, making and promotional functions  
(Head Office for Scientific and Technological Innovation Strategies (tentative name), etc.)
- (2) Enhancement of the assessment and allocation functions in the research fund systems
  - i) Systemic reform for effective and efficient assessment/allocation of research funds
  - ii) Improvement and enhancement of the competitive fund system

- (3) Enhancement of R&D implementation systems
  - i) Reform of the R&D corporation  
(Creation of a new system for national R&D institutions)
  - ii) Development of a system for promoting research activities effectively
- (4) Establishment of PDCA cycle in STI policy
  - i) Ensuring the effectiveness of PDCA cycle
  - ii) Improvement and enhancement of R&D evaluation systems

#### 4. Expansion of R&D Investment

Combined government and private sector R&D investment to reach 4% of GDP or higher  
Government R&D investment to reach 1% of GDP, a total of approximately 25 trillion yen

# 6

## Chapter

# Cultivating Nation Building Based on Culture and the Arts

## Comprehensive Promotion of Measures that Foster Culture and the Arts

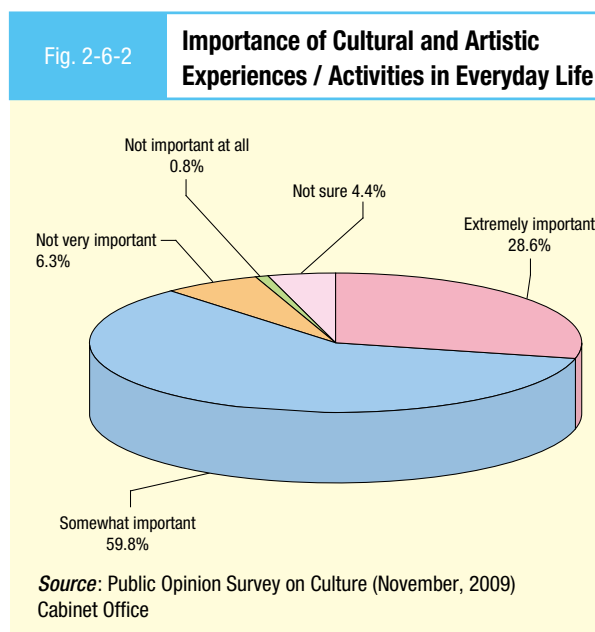
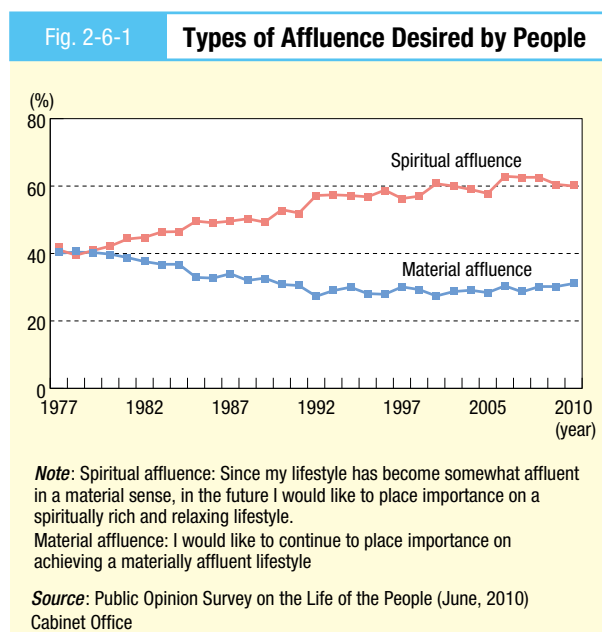
In 2001, the Japanese Government enacted the "Fundamental Law for the Promotion of Culture and the Arts" as an all-encompassing law for culture and the arts. Founded on the promotion of voluntary activities among those who are engaged in culture and the arts, the law aims to comprehensively implement measures which promote culture and the arts, and to contribute to spiritually enhance the lifestyles of the people while invigorating society as a whole.

Pursuant to the Fundamental Law for the Promotion of Culture and the Arts, the government has formulated the "Basic Policy on the Promotion of Culture and the Arts" ("Basic Policy") to comprehensively implement measures associated with the promotion of culture and the arts. Based on this Basic Policy, the government is working to promote culture and the arts aimed at "Nation Building Based on Culture and the Arts."

### - Circumstances Surrounding Culture and the Arts in Japan -

According to the Cabinet Office "Public Opinion Survey on the Life of the People," the percentage of people who think, "Since my lifestyle has become somewhat affluent in a material sense, in the future I would like to place importance on a spiritually rich and relaxing lifestyle" has tended to increase in general, reaching about 60% in FY 2010 (Fig. 2-6-1).

Further, according to the Cabinet Office "Public Opinion Survey on Culture" (November, 2009), approximately 90% of all Japanese people consider it "extremely important" or "somewhat important" to enjoy superb culture and the arts, and participate in cultural activities for oneself in its daily life (Fig. 2-6-2).

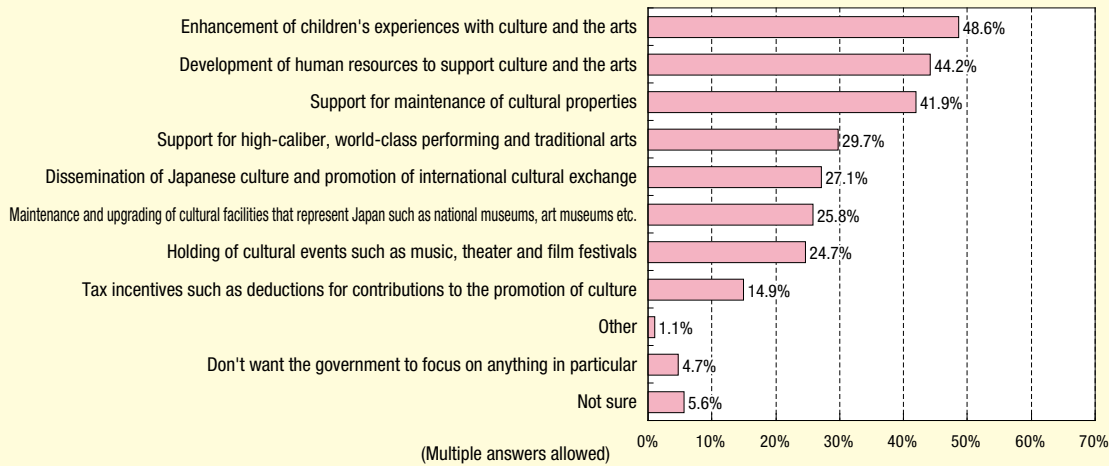


Approximately 50% of Japanese citizens selected "enhancement of children's experiences with culture and the arts" as the area they most wanted the government to focus on in its promotion of culture and the arts. This was followed by the "development of human resources to support culture and the arts" and "support for the maintenance of cultural properties." Approximately 40% of the respondents chose each of these areas (Fig. 2-6-3).

In line with Basic Policy, the Agency for Cultural Affairs carries out a variety of measures for the promotion of culture and the arts. These include experiences for children to become acquainted and familiar with culture and the arts, human resource development, and the preservation and practical use of cultural properties. Unfortunately, however, both Japan's budget for cultural affairs and its private donations are at lower levels compared with those of other countries (Fig. 2-6-4).

Fig. 2-6-3

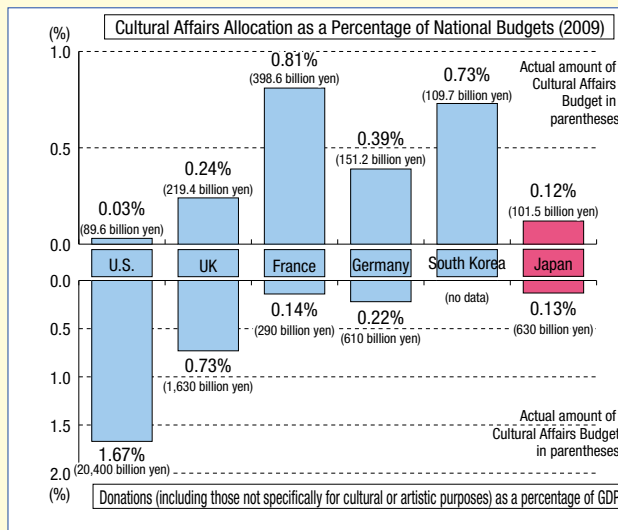
**Areas Citizens want the Government to Focus on when Promoting Culture and the Arts**



Source: Public Opinion Survey on Culture (November, 2009) Cabinet Office

Fig. 2-6-4

**Cultural Affairs Budget and Amount of Donations (In comparison with those of other countries)**



Note:

- Budget amounts are converted as follows.  
1 Euro = 134 yen 1 Dollar = 94 yen 1 Pound = 152 yen 1 Won = 0.076 yen  
(Using Ministry of Finance public disbursing official rates as of January 4, 2010)
- The United States: Figures are the sum of (1) the National Endowment for the Arts budget; (2) the Smithsonian Institute budget; and (3) budgets for the protection of cultural properties by the Department of the Interior, National Park Service. (In the United States, no single department or agency handles cultural policies for the entire nation, and these three institutions listed here dispense public funding related to cultural promotion and protection of cultural properties and artifacts.) In the United States, the main motivations to encourage private donations with little direct assistance from the government are tax deductions and other allowances. The culture affairs related budget accounts for around 0.03% of the federal budget.
- United Kingdom: Figures are the budget amount for the Department for Culture, Media and Sport, excluding the budget for tourism and sports. Note that the department's budget amount includes royal parks, broadcasting and media, and support for cultural industrialization.
- France: French Ministry of Culture and Communication budgeted amount. This includes budgets for archives, cultural industry and art education.
- Germany: Figures are the budgeted amount for the Minister of State for Culture and the Media, and includes the costs of national libraries, archives and media.
- South Korea: Figures are derived from the Ministry of Culture, Sports and Tourism budget amounts, excluding budgeted amounts related to tourism and physical education, but including the budgeted amount for the Cultural Heritage Administration of Korea. The budgeted amount for the Ministry of Culture, Sports and Tourism includes amounts related to cultural industry and national libraries.
- Donations as a percentage of GDP are based on a 2006 report by the Charities Aid Foundation, a UK-based NPO. Figures for other countries are from 2005. Figures for Japan are from the Economic and Social Research Institute, Cabinet Office (2008). No data is available for South Korea.

Source: Survey by the Agency for Cultural Affairs

Culture and the arts are carried on from the past into the future and bring people much delight and inspiration. At the same time, they are crucially important as the foundation for all activity in Japan, including economic and international cooperation.

In light of the importance of culture and the arts, the Agency for Cultural Affairs shall continue to work to promote culture and the arts.

**- Fundamental Law for the Promotion of Culture and the Arts and Basic Policy -**

Against a backdrop of increasing demand by Japanese citizens for the promotion of culture and the arts, the Fundamental Law for the Promotion of Culture and the Arts was passed as legislation by House members in November, 2001, and was proclaimed as law and began to be enforced in December of that year.

The intent of the law is to accelerate voluntary activities among those who are involved in cultural/artistic pursuits and to comprehensively implement measures for the promotion of culture and the arts. To do this, the law aims to define the basis for measures which promote culture and the arts. Some examples of this are arts, media arts, traditional arts, culture of life, and cultural properties. The law also clarifies the responsibilities of the National Government and local government.

The Basic Policy is to be formulated by the government based on the same law that comprehensively implements measures to promote culture and the arts. The Agency for Cultural Affairs has worked on the promotion of culture and the arts based upon the Phase One Basic Policy (approved by Cabinet decision in December, 2002) and the Phase Two Basic Policy (approved by Cabinet decision in February, 2007).

Another Basic Policy was approved by Cabinet decision as the Phase Three on February 8, 2011. (See Section 1 of Chapter 6 in Part II)

### **- Council for Cultural Affairs –**

As part of the reform of central government ministries and agencies in January 2001, the Council for Cultural Affairs was established within the Agency for Cultural Affairs to strengthen the policy-proposing capabilities in preparation for the improved promotion of culture and the arts. The Council for Cultural Affairs has established the Cultural Policy Committee plus its four subdivisions: (1) Subdivision on Japanese language; (2) Subdivision on Copyright; (3) Subdivision on Cultural Properties; and (4) Subdivision on Selection of Cultural Merits. These groups aim to take a broad perspective as they study and deliberate over important matters regarding the promotion of culture and international cultural exchange.

The Council for Cultural Affairs has so far submitted ten policy reports, and the Agency for Cultural Affairs is working on various measures in response to those reports.

### **(Major policy reports etc. in the past)**

- "On Building a Society that Values Culture - Towards a Society where Individuals Enjoy Spiritually Rich Lives (Policy Report)," (April, 2002)
- "Basic Policy on the promotion of Culture and the Arts (Policy Report)," (December, 2002)
- "On Japanese-Language Proficiency which is Required for the Future (Policy Report)," (February, 2004)
- "On Measures to Support Creative Activities in Performing Arts for the Future (Recommendations)," (February, 2004)
- "On Energizing Japan through Local Culture! (Report)," (February, 2005)
- "A Revision of the Basic Policy on the promotion of Culture and the Arts (Policy Report)," (February, 2007)
- "Guidelines on Honorific Expressions (Policy Report)," (February, 2007)
- "On the Training and Practical Use of Talent in the Performing Arts (Report)," (July, 2009)
- "Revised Table of Chinese Characters in Common Use (Joyo Kanji Hyo) (Policy Report)," (June, 2010)
- "Basic Policy on the promotion of Culture and the Arts (Phase Three) (Policy Report)," (January, 2011)

### **- Budgetary and Tax Measures for the Promotion of Culture and the Arts -**

#### **(Budgetary measures)**

In FY 2010, MEXT made progress on policies which support "soft" and "human" endeavor through emphasizing the following three areas: (1) the "creation of a rich culture and the arts, and the nurturing of human talent"; (2) the "preservation and practical use of our nation's unique cultural properties"; and (3) the "transmission of Japan's rich culture both domestically and overseas."

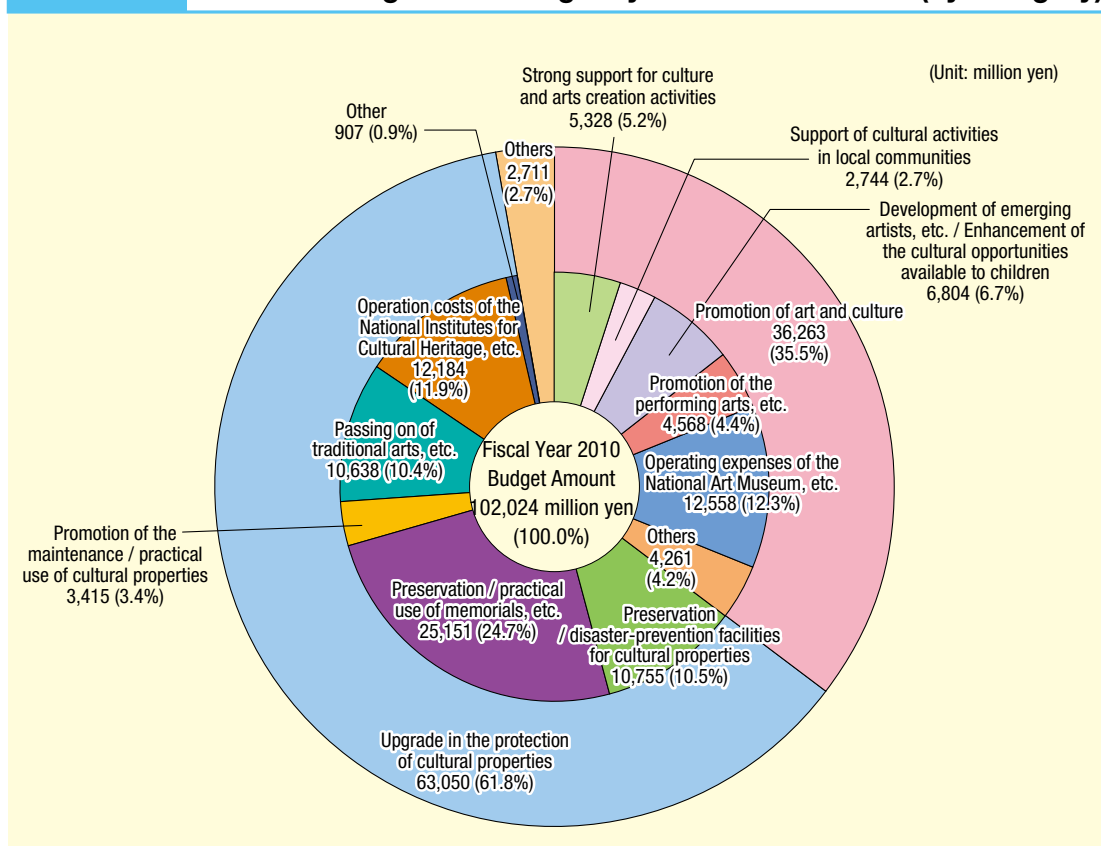
In the area of "creation of a rich culture and the arts, and the nurturing of human talent," MEXT implemented measures focusing on (1) strong support for activities which lead to culture and arts creation activities; (2) support for cultural activities in local communities; and (3) improvements in nurturing artists and other culture-makers, as well as the fostering of cultural experience for children.

In the area of the "preservation and practical use of our nation's unique cultural properties," MEXT has planned enhancements in preservation and disaster-prevention facilities for cultural properties well as promoting the maintenance and practical-use of cultural properties. MEXT also worked on (1) strategically communicating Japan's superb performing arts and media arts both domestically and internationally; (2) promoting international cooperation concerning cultural properties; and (3) improving Japanese language education for foreigners; and (4) developing infrastructure that supports cultural proclamations.

In addition, the Japan Arts Fund established within the Japan Arts Council is providing a wide range of aid for activities which enhance culture and the arts.

Fig. 2-6-5

## FY 2010 Budget for the Agency for Cultural Affairs (by category)

**(Tax measures)**

In general, when a corporation makes a donation, a loss of income up to a certain level, known as an "inclusion," is factored in. Moreover, in the case of donations to a "corporate body that is making special contributions to the public interest," an extra inclusion in expenses is allowed for donations from private persons, and the maximum amount for general inclusion in expenses is permitted for a juristic person, such as a business enterprise. Such donations satisfy specific requirements under the Civil Code; these are primarily for the dissemination/improvement of the arts, the preservation and practical use of cultural properties, and the establishment/operation of museums, etc.,

Particularly with respect to donations by private individuals, some measures were implemented for easier support of cultural and artistic groups. One of these is the raising of the rate of the maximum deductible amount for donations over income from 30% to 40% in 2007. Further, in 2010 the minimum amount allowed to be considered a deduction was lowered from 5,000 yen down to 2,000 yen.

Moreover, for cultural properties, necessary tax incentives are offered so that the owner can properly manage the cultural property. For example, a tax exemption is made, or tax on only half the value is applied to the fixed property tax of a house / building, along with the land that is designated, selected and registered as an important cultural property. When an important cultural property is transferred to the National Government or to local governments, it is exempt of income tax (land designated as an historic site shall be given a special deduction), and for buildings (including traditional buildings located in registered tangible cultural properties or the important preservation districts for a group of traditional buildings) and their land, a specific amount of write-off shall be allowed when calculating the amount of inheritance tax due. Further, as a measure taken in FY 2009/10, a tax on only half the asset's value is applied to the fixed property tax, the real estate acquisition tax, and the city planning tax of the facilities owned by Public Interest Incorporated Associations/Foundations to perform important intangible cultural properties.

In addition, special measures for the payment of the inheritance tax in-kind are allowable for works of art registered as enrolled art objects to promote the opening to the public of art museums with excellent collections.



# 7

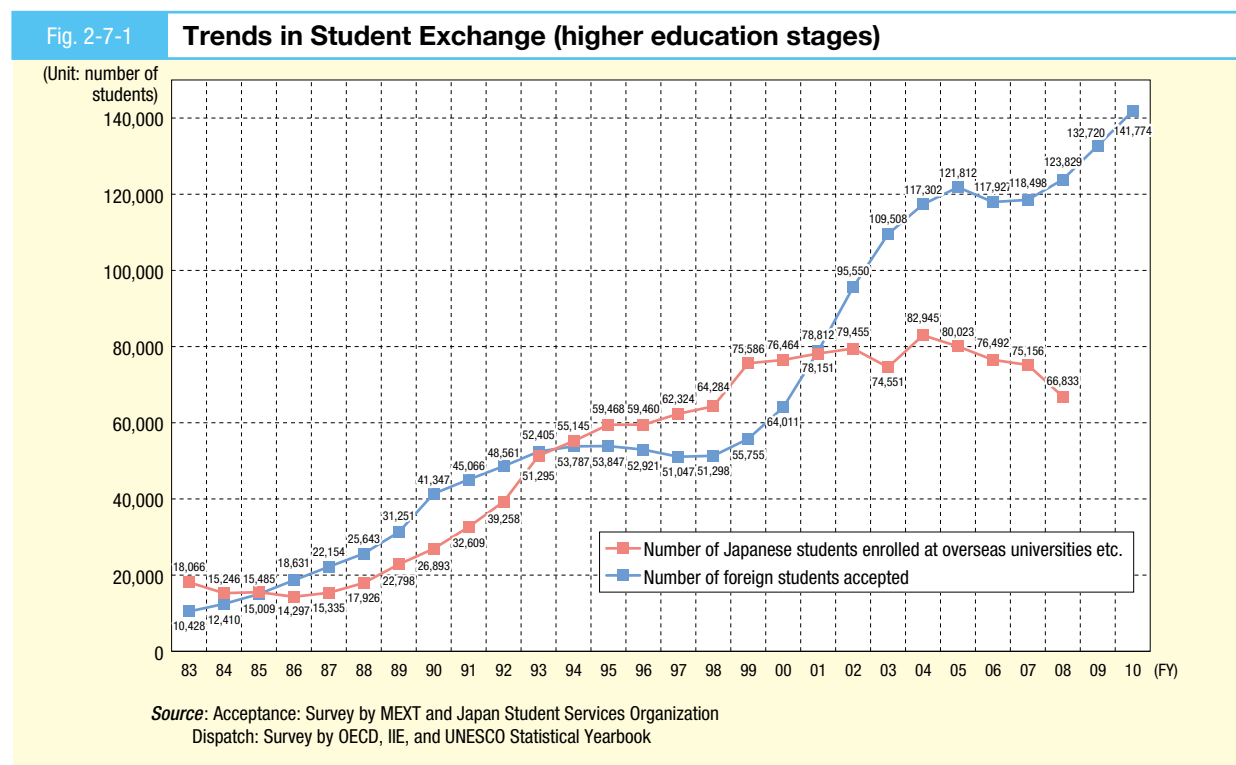
## Chapter

# The Enhancement of International Exchange and Cooperation

## Current issues, background, and future direction

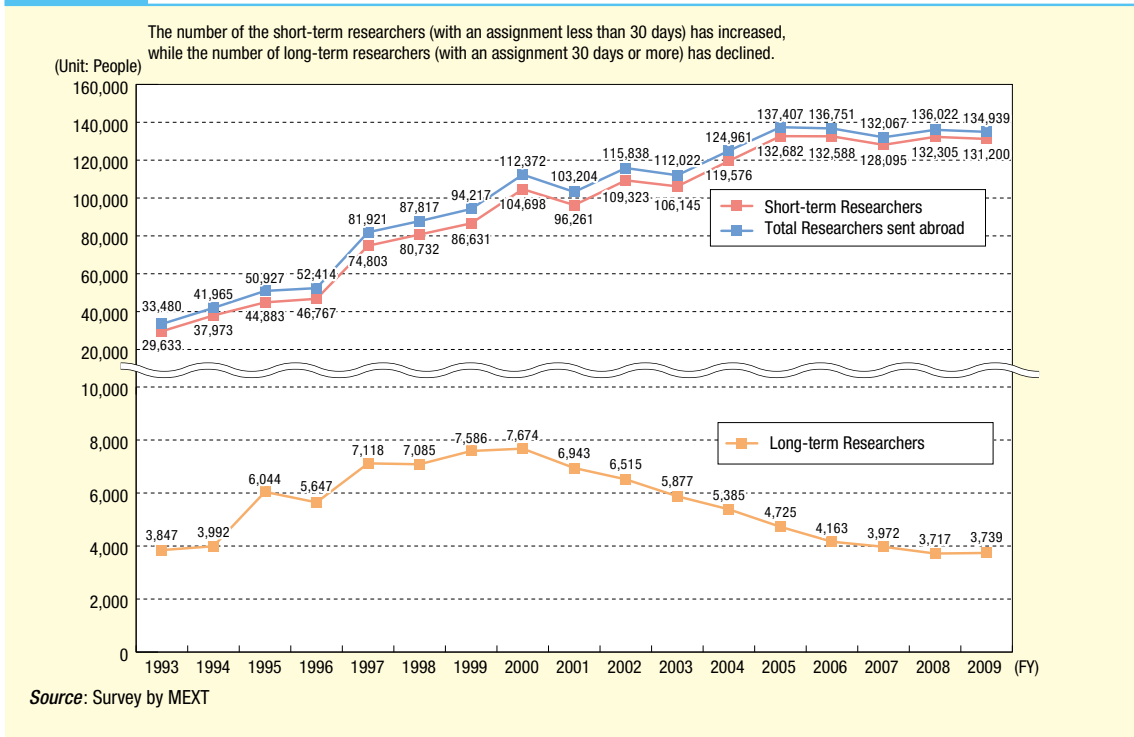
As interdependence among nations intensifies due to the higher mobility of people/things/money, diversification of human resources is essential for Japan to be a society in which new values can be continuously created. The "internationalization of knowledge," in which Japan's "knowledge" is presented to the world, is the very source of innovation which supports the nation's sustainable growth, and such "internationalization of knowledge" is undoubtedly brought about through diversification in human resources. The development of human resources to lead our globalized international society is the most critical challenge upon which our nation's future depends.

In recent years, however, the tendency for young people such as students and researchers to become inward-looking has become a significant social issue for Japan. For example, the number of Japanese studying abroad at overseas universities peaked in 2004 at 80,000, and has since been on the decline. Japan used to be the top in terms of the number of foreign students in the U.S., but now is behind other Asian countries such as China, India, South Korea, etc. Regarding the reasons why Japanese youth are hesitant to study abroad, various factors stand out. These include not only the issue of language skill and the high cost of overseas study, but also the fact that job-hunting has become tougher and takes longer in today's severe economic climate. Further, Japanese employers historically have not necessarily valued overseas study.



Further, the number of researchers dispatched abroad appears to have hit a plateau or declined. In particular, the number of researchers dispatched for long-term assignments has decreased dramatically, which can be explained by significant improvements in the research environment of Japan as well as uncertainty in career options upon return from overseas and the lack of network channels to access opportunities to transfer to overseas institutes.

Fig. 2-7-2 Number of Researchers Sent Abroad (short-term/long-term)



Taking these circumstances into consideration, MEXT began a “Commission on International Exchange Policy” in January 2009, which discusses policies of importance for the promotion of international exchange and international cooperation in this age of globalization. Then, in March 2011, MEXT compiled a "Final Report of the Commission on International Exchange Policy" which calls for the development of human resources necessary in this age of globalization.

The report states that the type of worker who will thrive in this era of tough global competition must acquire an ability to communicate logically in foreign languages, must have an open mind towards other, distinct cultures, and must cultivate his/her imagination to create new values. This is presuming that the worker, as a Japanese, has an appropriate level of natural intelligence and education. The report places strong emphasis on the promotion of the following educational measures to develop such human resources.

### 1. Measures Aimed at Children Who Will Reach Adulthood in 10 years

- Foster English education from an early age to improve communication skills.
- Make practical use of the International Baccalaureate<sup>\*1</sup>, and international schools

### 2. Measures Aimed at Young People Who Are Inward Looking

- From the employer side, efforts could be made to reconsider when job hunting should begin, place value on the overseas study experience, and introduce the concept of the Gap Year,<sup>\*2</sup> etc.
- From the university side, efforts could be made to harmonize the Japanese academic calendar with those of overseas universities, promote more practical education in languages, make practical use of English proficiency test scores such as TOEFL for evaluation.
- Promote a “Campus Asia” project by Japan, China, South Korea which accelerates interaction and coordination among universities in Asia region.

#### \*1 International Baccalaureate

Education by International Baccalaureate Organization was established in 1968 to contribute to the development of flexible thinking in students, to promote education which emphasizes international understanding, and to encourage students to pursue the path toward university matriculation.

#### \*2 Gap Year

A custom that is pervasive in the UK whereby for youth who are between 18 and 25 years old to first get qualified to enter university but then delay matriculation by one year to broaden their social experience and understanding. With that idea in mind, the “Gap Year” refers to a system through which students and young people gain experience abroad for a set time period.

### **3. Measures to Develop Workers Who Excel in the International Job Arena**

- Establishment of programs which offer students internship projects opportunities or volunteer assignments with international organizations as a part of their university education.

### **4. Measures Aimed at Fostering Young Researchers**

- Improvement of opportunities for research abroad as well as networks among Japanese researchers worldwide in an effort to develop and secure world-class, capable workers who are capable of brain circulation.

### **5. Measures Aimed at Improving Teachers**

- Sending of young Japanese English language teachers to U.S. universities to improve their English-teaching skills. Expansion in Japan-China/South Korea teacher exchange. Expansion of participation by active teachers in the Japan Overseas Cooperation Volunteers (JOCV).

### **6. Development of Workers Who Play an Active Role in International Society Through Education for Sustainable Development (ESD)**

- Further promote ESD, which is essentially "education of people who can help create a sustainable society." Strengthening of a support system for ESD by boards of education, universities, private associations and others, as well as improving the network of UNESCO Associated Schools, a driving force for ESD.

Considering all the above, MEXT will continue to work to promote "internationalization of knowledge" both inside and outside of Japan.

# 8

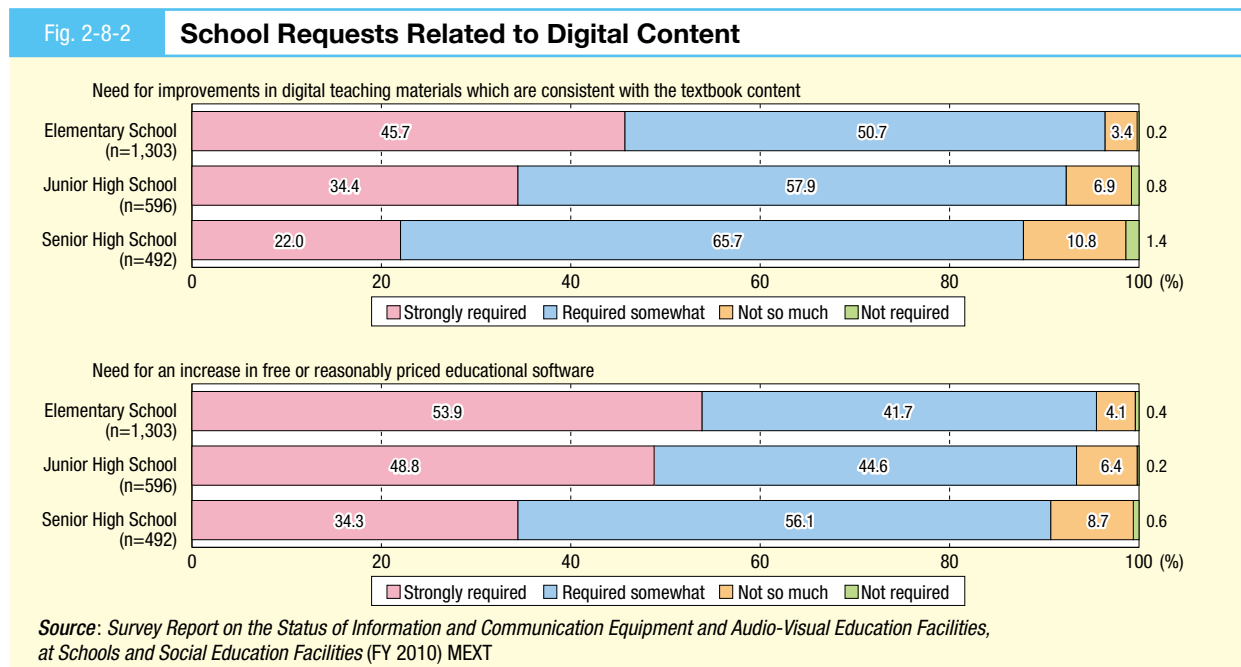
## Chapter

# Promoting the Information Society Revolution

Amid rapid progress towards an information society, ICT (Information and Communication Technology) utilization for education is important in efforts to realize easy-to-understand lessons, alleviate the school administrative works for teachers and enhance students' information literacy, as well as to provide children with high-quality education.

In a model project implemented by MEXT, the results of objective testing indicate that students tend to achieve a higher level of performance in cases where ICT is used compared with cases where it is not. (MEXT contract research, "Research Contributing to the Promotion of ICT use in Education," National Institute of Multimedia Education, Incorporated Administrative Agency, March, 2007). Furthermore, a survey of actual conditions for teachers conducted in Kumamoto Prefecture showed that the time teachers spent directly instructing students increased due to the informatization of school administration. (MEXT contract research, "Program Promoting Advanced Education using ICT" (FY 2007 through 2009).

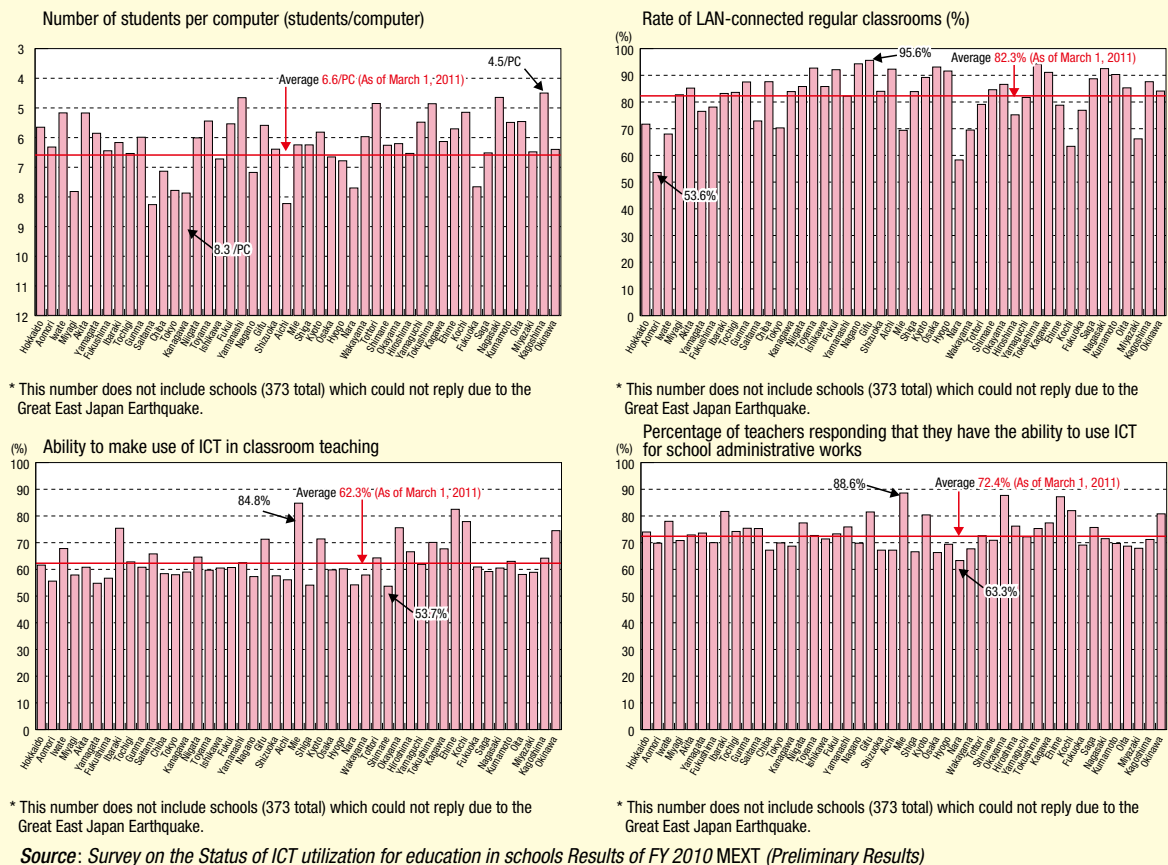
Meanwhile, according to a survey conducted by MEXT, schools are increasingly expressing their need for "teaching materials consistent with the textbook content," as well as for "free or reasonably priced educational software." (Fig. 2-8-2).



In addition, improvements to the environment for ICT at schools and the ability of teachers to use and teach ICT is inadequate, with considerable disparities observed among local governments (Fig. 2-8-3).

Fig. 2-8-3

State of the Development of ICT Environments and the Ability of Teachers to Use and Teach with ICT

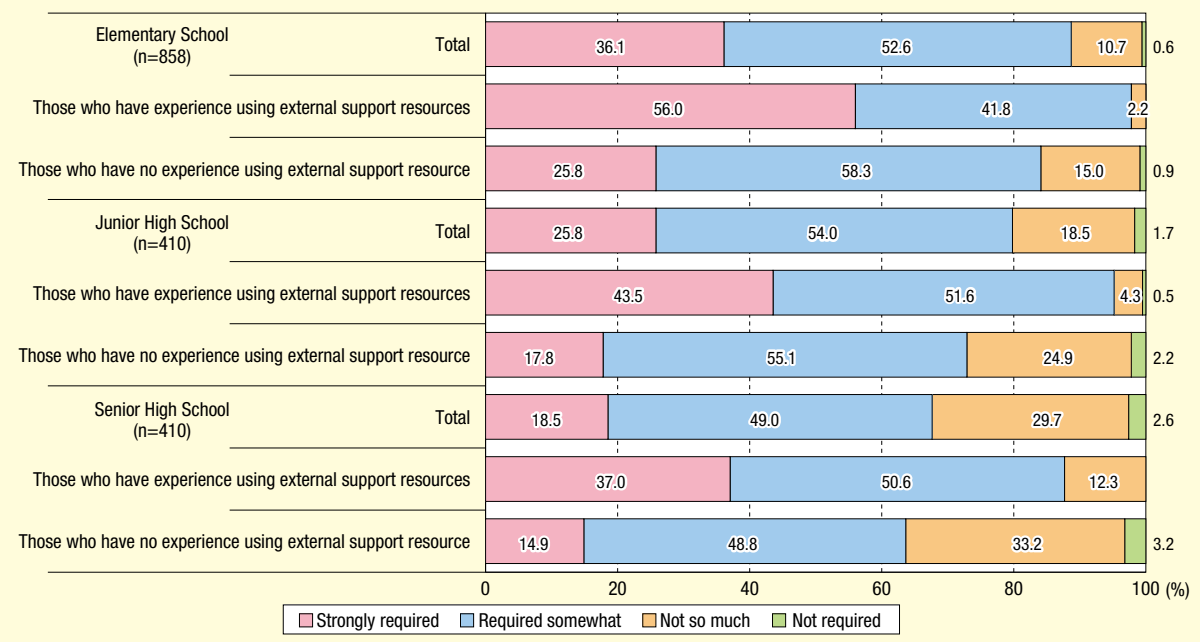


Source: Survey on the Status of ICT utilization for education in schools Results of FY 2010 MEXT (Preliminary Results)

Moreover, many schools claim that external human resource support, such as ICT assistant, is needed. The needs are most recognized by schools with much experience in the practical application of ICT, and they are demanding better ICT support at their schools (Fig. 2-8-4).

Fig. 2-8-4

Need to Improve External Resources for Support (ICT assistant, etc.)



Source: Survey Report on the Status of Information and Communication Equipment and Audio-Visual Education Facilities, at Schools and Social Education Facilities (FY 2010) MEXT

---

The rapid progress towards an information society could lead to overall social innovation by ICT, which can be referred to as the information society revolution. Under the circumstances, it is important to create schools and learning suitable for school education in the 21st century. For this reason, MEXT established "A Vision for Education Informatization," which involves comprehensive measures to promote use of ICT at schools. These measures are based on dialogues such as those at the "Discussion Group on Informatization of School Education" (See topic in this chapter).

# 9

## Chapter

# Maintaining Safe and High-Quality School Facilities

## Initiatives aimed at Making School Facilities Appropriate for a New Era

School facilities are a basic educational requirement, and maintaining safe and high-quality school facilities is essential for preserving and improving educational levels appropriate to the developmental stage of the children.

For this reason, MEXT is working on establishing guidelines and compiling examples to help in maintaining school facilities and ensuring that school officials are aware of these materials. The government is also providing subsidies for buildings which require improvements for the education environment due to insufficient earthquake resistance or aging. MEXT additionally promotes the improvement of school facilities to achieve minimal environmental impact as a global warming countermeasures, a challenge faced the world over.

Also, as well as providing support for the prioritized and systematic improvement of facilities at national universities, etc., MEXT also drives the maintenance and improvement of the campus environment that supports education and research activities at universities and other institutions through the promotion of facility management and other efforts.

## The Role of School Facility Design in the Basic Plan for the Promotion of Education

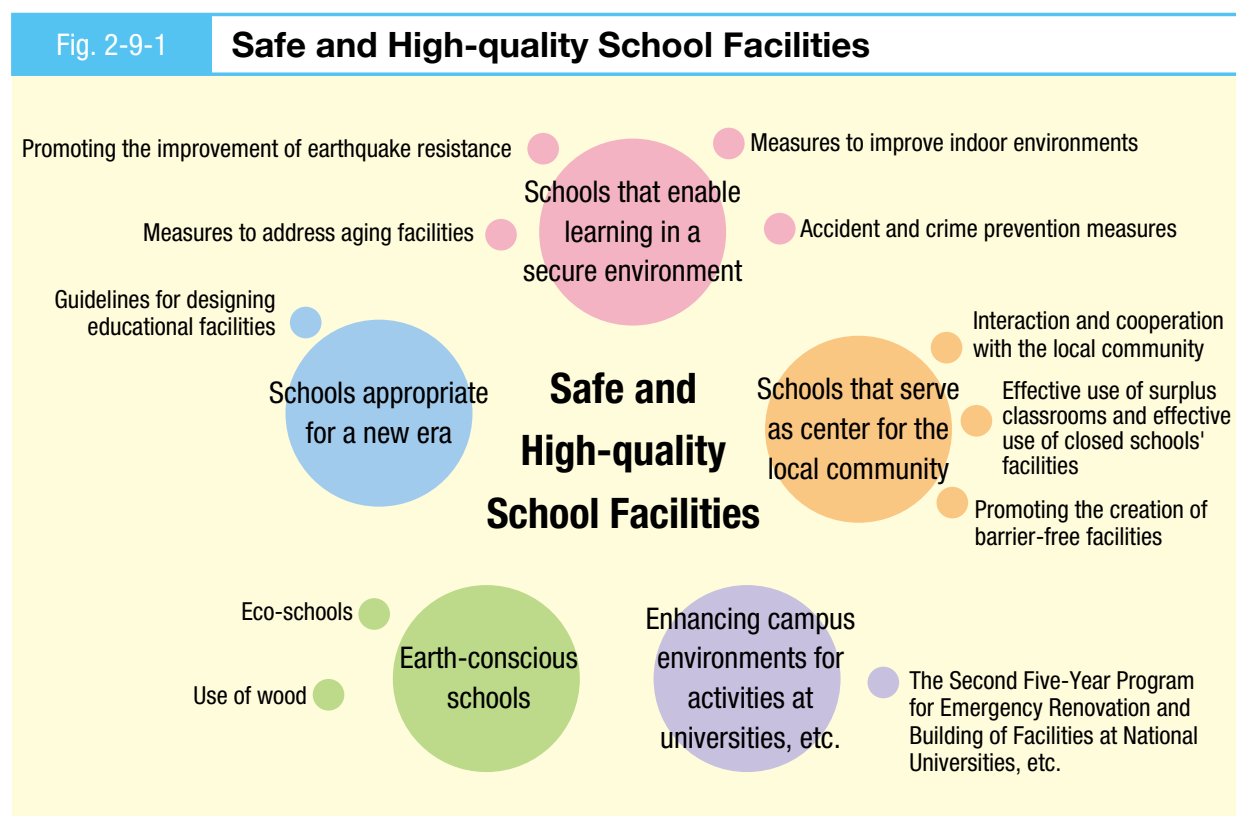
### Basic Direction 3: Development of human resources with a wide range of essential knowledge, expertise and intelligence to support social development

#### ◇ Maintenance and upgrading of education and research facilities and installations such as universities

To promote the development of outstanding human resources and creative and cutting-edge R&D, support is provided for the prioritized and systematic improvement of facilities and equipment at universities, etc. not only to ensure safety, but also to equip them with functions that fulfill present-day education and research needs. To this end, the Second Five-Year Program for Emergency Renovation and Building of Facilities of National Universities, etc. (FY 2006 to 2010) will be steadily implemented.

### Basic Direction 4: Preserving safety and security for children and the creation of an environment for high-quality education

#### ◇ Improving earthquake resistance and taking other measures to establish safe and secure environments at



### *school and other educational facilities*

In order to ensure the basic requirements for education throughout the country, the government supports in the improvement of school facilities. The government also is to assist in establishing emergency evacuation sites by improving the earthquake resistance of elementary and junior high school facilities. These are not only places where students learn and do other activities with a sense of security, but they also play a role as places of safety and security in the event of disasters. The government is to take an active role in improving earthquake resistance at elementary and junior high school facilities, prioritizing those which would have a high risk of collapse in the event of a powerful earthquake. The national government asks local governments and other relevant parties to improve the earthquake resistance at these facilities as soon as possible within the time frame of this plan. Along with these efforts, the government is to also help make the environment of these facilities better by making them barrier-free, anti-asbestos, etc.

## **The Current State of School Facilities — Challenges and Efforts towards Improvement**

### **Schools that enable learning in a secure environment**

- *Promoting the improvement of earthquake resistance*  
It is crucial to ensure the safety of school facilities, since they are both places for students to learn and live as well as emergency evacuation sites for local residents in the event of a disaster. Through the provision of government subsidies, etc., MEXT is supporting the efforts of local governments and actively working to implement measures to improve earthquake resistance.
- *Dealing with aging facilities*  
With facilities constructed over 25 years ago now making up about 70% of all public school facilities, the aging of facilities which were constructed during a period when Japan experienced rapid growth in its number of students has led to some serious problems. To ensure safety and security in the event of an earthquake, and, to ensure reliable use on a daily basis, it is necessary to strategically and effectively promote the renovation and improvement of aging school facilities in order to extend their lives, always keeping environmental concerns in mind.
- *Measures for indoor environments*  
To ensure that students study comfortably and healthily in their schools, MEXT encourages improvement of the environments of school facilities, including anti-asbestos measures and procedures for eliminating indoor air pollution.
- *Accident and anticrime measures at school facilities*  
MEXT is taking measures to support accident and crime prevention at schools in an effort to ensure that the schools' facilities offer an environment that provides a sense of security. This includes adequate disaster prevention and anticrime measures at school facilities.

### **Schools appropriate for a new era**

- *Guidelines for Designing Educational Facilities*  
MEXT has established Guidelines for Designing Educational Facilities which shows items to consider when planning and designing facilities for each type of school. The guidelines are continuously reviewed to respond to changes to the content and methods of learning and to the social circumstances. MEXT is also working to disseminate and raise awareness through exemplary models of school facilities and anthology of ideas for creating new school facilities.

## **Schools that serve as a center for the local community**

- *Interaction and cooperation with the local community*  
The government is working to enhance school facilities as a center for a range of activities, such as lifelong learning opportunities and exchanges with local residents such as the elderly.
- *Effective use of closed schools' facilities and surplus classrooms*  
In recent years closed schools' facilities and surplus classrooms have resulted from a decline in student numbers associated with Japan's declining birthrate, and this phenomenon has created a need to use these classrooms effectively. MEXT offers assistance to local governments when they seek to effectively make use of surplus classrooms by means such as introducing examples of excellent re-use projects and by allowing flexible procedures for the disposal of property.
- *Promotion of barrier-free educational facilities*  
MEXT assists efforts on the part of those who establish or operate schools through such procedures as the creation of exemplary models of school facilities. This is done to enable students, whether disabled or not, to enjoy their school lives relatively problem free. This also allows schools to serve as safe and secure environments for local residents in the event of a disaster.

## **Earth-conscious schools**

- *Eco-schools*  
MEXT is promoting the establishment of environment-friendly educational facilities (eco-schools). These are facilities that reduce environmental impact and aim to coexist with nature while serving as resources for educators and centers of spreading the messages of environmental education to the local community.
- *Use of wood*  
The use of wood for school facilities can be an effective way to cultivate a comfortable and pleasant educational environment while reducing environmental impact. In this regard, MEXT assists municipalities through subsidies, guidebooks on the use of wood, and other measures.

## **Enhancing campus environments for activities at universities, etc**

- *The Second Five-Year Program for Emergency Renovation and Building of Facilities of National Universities, etc. (FY 2006 to 2010)*  
MEXT is supporting the focused and systematic improvement of facilities for such entities as national universities and some corporations, placing a top priority on refurbishment of aging facilities through measure such as improving earthquake resistance. In addition, MEXT using various financial means to proactively upgrade university campus environments in order to better support educational and research activities through improved facility management and upgrades to facilities. MEXT is also currently establishing its facilities design plan for the next five years.

# 10

Chapter

## Enhancing Disaster Prevention Measures

## Chapter 10 Outline

To ensure the safety and security of students, in accordance with the Disaster Countermeasures Basic Act and other legislation, MEXT has formulated the MEXT Disaster Prevention Operation Plan. It aims to promote better disaster prevention through such means as disaster prevention education and improving the disaster protection function of school facilities, while mandating emergency disaster control measures, supporting disaster recovery, and advancing disaster-prevention R&D.

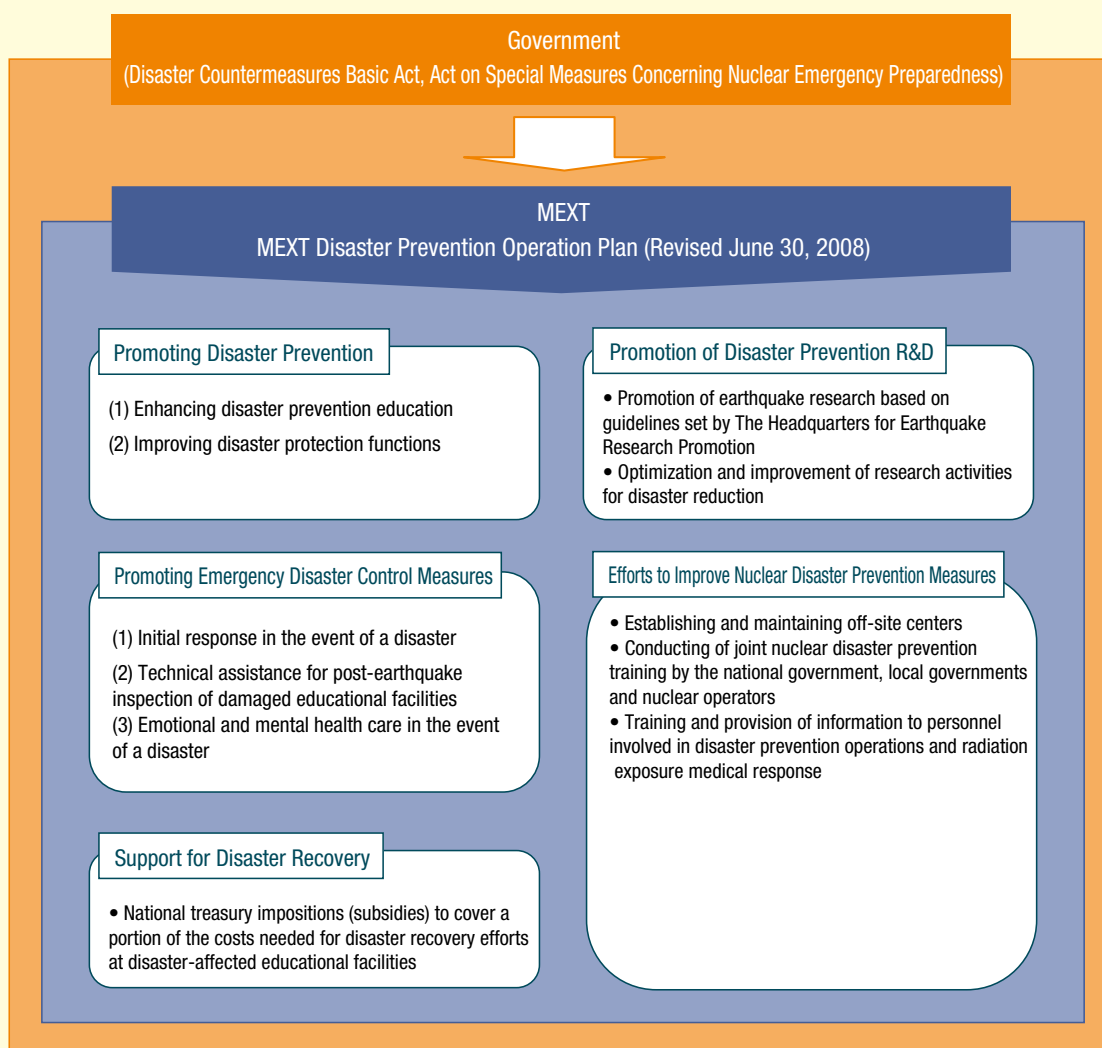
MEXT is also carrying out nuclear disaster prevention measures such as maintaining and improving off-site centers and providing training for workers in the event of a disaster.

However, the Great East Japan Earthquake and the disasters at the Fukushima No. 1 and No. 2 Nuclear Power Stations operated by Tokyo Electric Power Co., Inc. caused unprecedented damage to three prefectures and their surrounding vicinities in the Tohoku Region of Japan. Therefore, it is necessary to review Japan's disaster prevention measures, such as disaster prevention education, and consider how they can be improved. MEXT will evaluate past measures and make every effort to improve its disaster prevention measures for the future.

(See "Response to the Great East Japan Earthquake" for efforts after the earthquake disaster.)

Fig. 2-10-1

### Enhancement of Disaster Prevention Measures



# 11

## Chapter

# Promotion of Administrative Reform and Policy Evaluations, etc

## Chapter 11 Outline

As a part of administrative reform, MEXT has been working on a review of the Incorporated Administrative Agency under its control and, at the same time, has been providing guidance and advice to Public Interest Corporations under its jurisdiction. Its objective has been to foster a smooth transition to a new Public Interest Corporations System, one which became operational in December, 2008. MEXT is now also making progress on a range of initiatives including regional autonomy reform, regulatory reform and a system of Special Zones for Structural Reform.

In addition, in accordance with the Government Policy Evaluations Act and other legislation, MEXT conducts evaluations of the policies under its control and improves its methods for implementing such evaluations each year to ensure that they are conducted in an objective and intelligible manner. With respect to Incorporated Administrative Agencies, in accordance with the General Rule Act for Incorporated Administrative Agencies and other legislation, MEXT has established the MEXT Evaluation Committee for Incorporated Administrative Agency, consisting of outside experts from a range of specialized fields, to conduct strict evaluations.