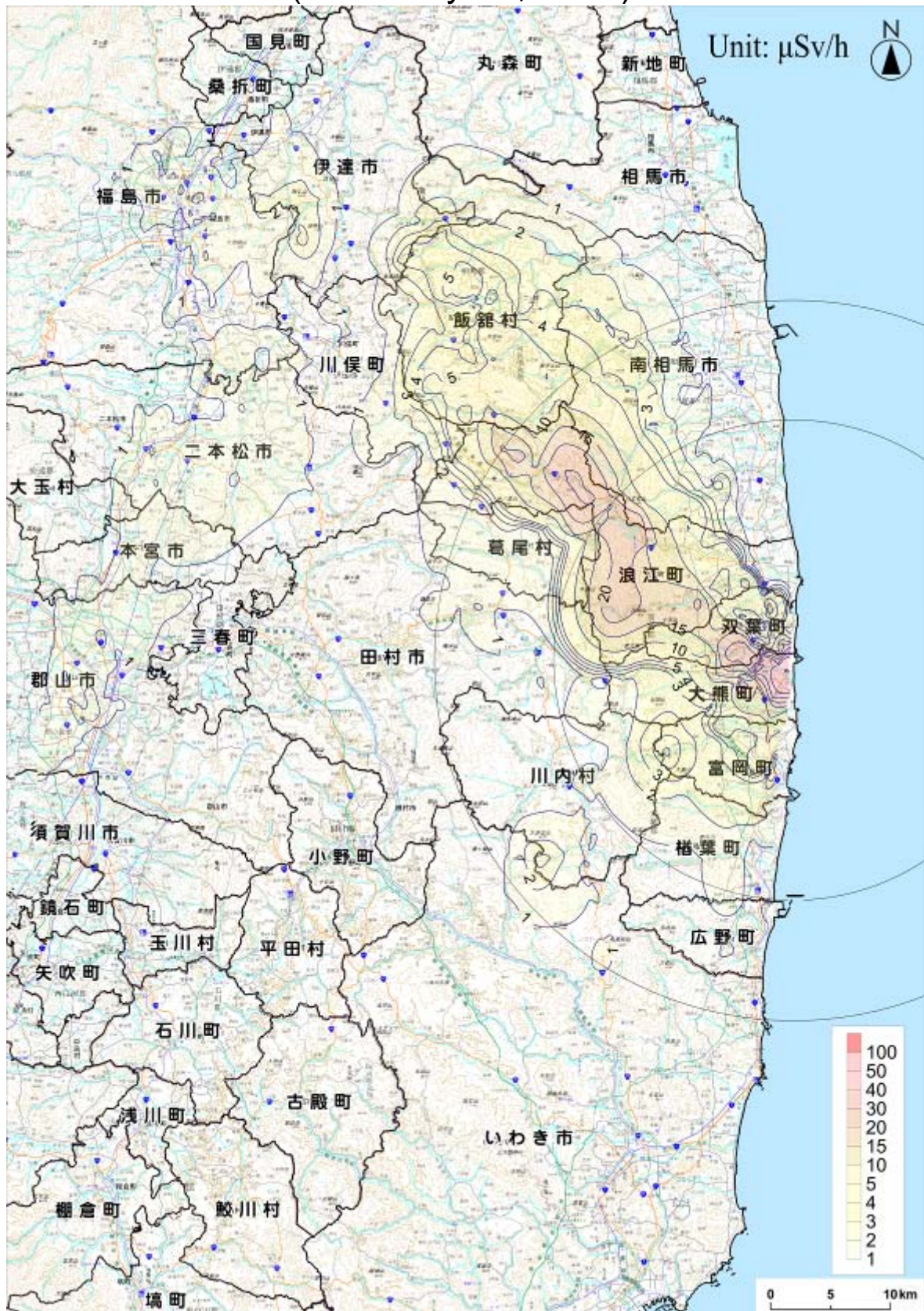
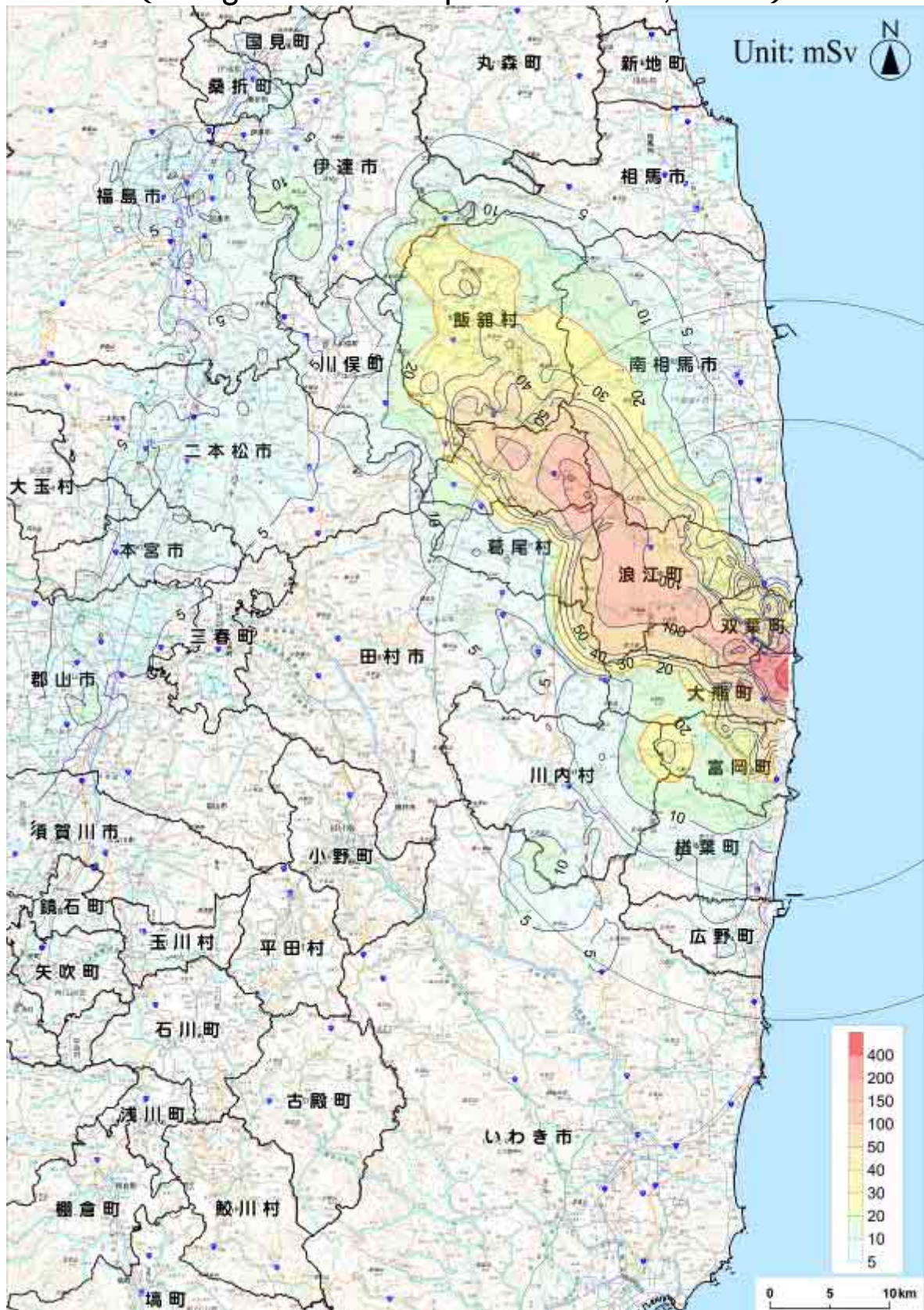


Dose Monitoring Map (Estimates) (As of July 11, 2011)



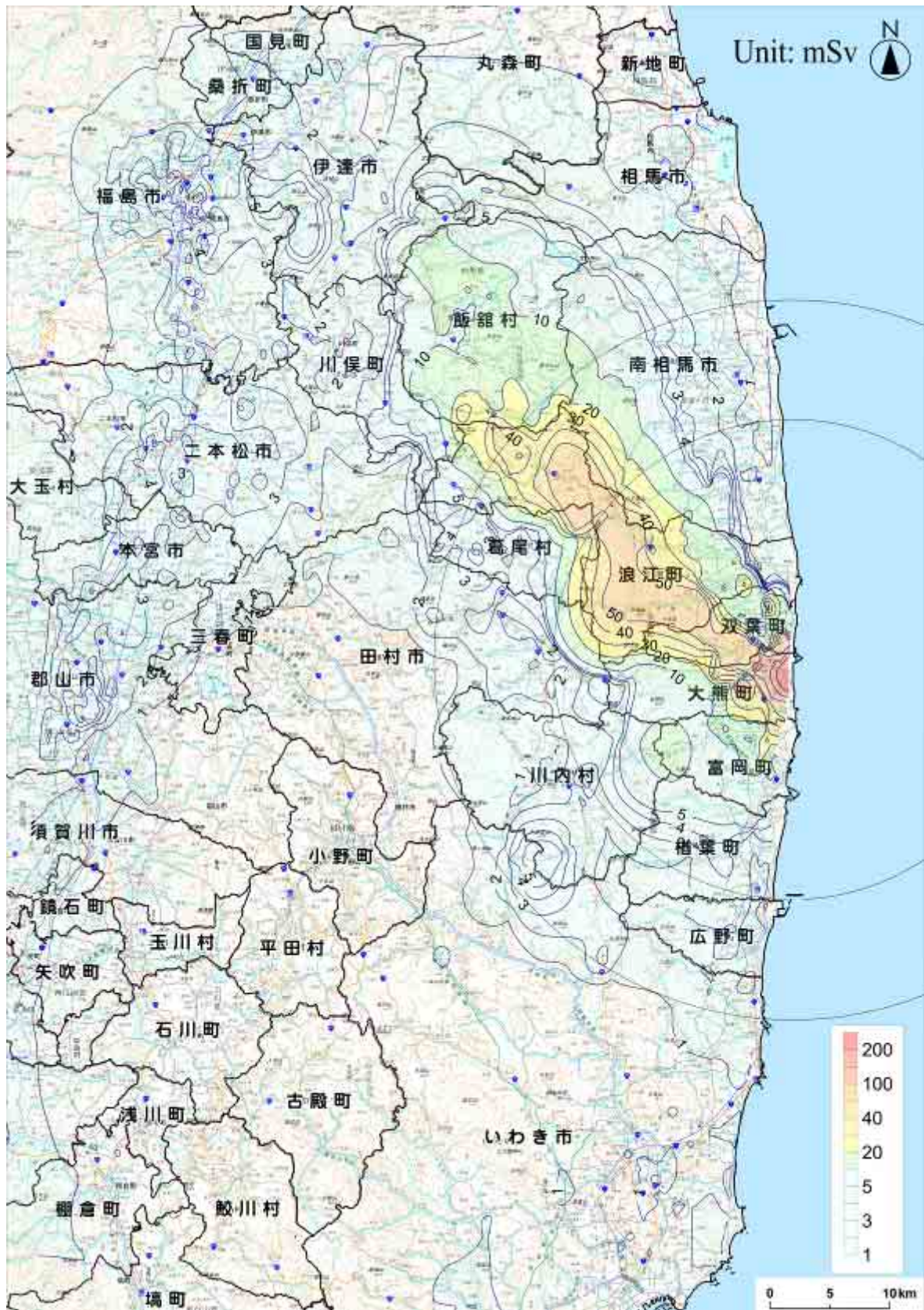
Map: Online map by the Geospatial Information Authority of Japan

Integrated Dose Map (Estimation) (Integrated Dose up to March 11, 2012)



Map: Online map by the Geospatial Information Authority of Japan
Adopting monitored values up to 24:00 on July 11, 2011

Integrated Dose Map (Estimation)
(Integrated Dose up to July 11, 2011)



Map: Online map by the Geospatial Information Authority of Japan
Adopting monitored values up to 24:00 on July 11, 2011

Estimated Integrated Dose at Each Monitoring Location based on Measured Values

Location Number	Reading Point【※11】	From TEPCO Fukushima Dai-ichi NPP		Date on which air dose monitoring was commenced	Estimates of Integrated Dose 【※1】		Latest Readings (Mean value) 【※3】		Estimates of Integrated Dose as of March 11, 2012 (mSv) 【※4】
		Direction	Distance		(mSv)	Note	(mSv/h)	Note	
(1) Planned evacuation zones									
83	Futaba county Namie town Akougi Kunugidaira	North/West	24km	2011/3/24	93.0	【※2】	0.0367		222.0
81	Futaba county Namie town Akougi Ishikoya	North/West	30km	2011/3/24	51.9	【※2】	0.0214		127.1
32	Futaba county Namie town Akougi Teshichiro	North/West	31km	2011/3/16	43.0	【※5】	0.0142		92.9
79	Futaba county Namie town shimotsushima kayabuka	West/North/West	29km	2011/3/16	19.8	【※5】	0.0067		43.4
31	Futaba county Namie town Tsushima Nakaoki	West/North/West	30km	2011/3/17	18.7	【※5】	0.0060		39.8
34	Futaba county Namie town Tsushima Taikougi	West/North/West	30km	2011/3/19	9.1	【※2】【※5】	0.0031		20.0
21	Futaba county Katsurao Village Kaminogawa	West/North/West	32km	2011/3/17	5.9	【※5】	0.0025		14.9
104	Futaba county Katsurao Village Oaza Ochiai aza Ochiai	West/North/West	25km	2011/4/7	4.4	【※2】	0.0011		8.4
33	Soma county Iitate Village Nagadoro	North/West	33km	2011/3/16	23.9	【※5】	0.0075		50.4
62	Soma county Iitate Village Kusano Taishido	North/West	39km	2011/3/17	11.8		0.0039		25.4
61	Soma county Iitate Village Yagisawa	North/West	36km	2011/3/17	9.1		0.0034		21.0
63	Soma county Iitate Village Nimaibashi	North/West	44km	2011/3/17	3.8		0.0011		7.6
46	Date county Kawamata town Yamakiya Mukaideyama	West/North/West	34km	2011/3/17	10.3		0.0035		22.4
36	Date county Kawamata town Yamakiya Oonukari	West/North/West	38km	2011/3/20	7.0	【※2】	0.0022		14.7
(2) Other zones									
108	Minami Soma city Haramachi ward Ohara Daihata	North/North/West	30km	2011/4/7	6.6	【※2】	0.0019		13.3
107	Minami Soma city Haramachi ward Baba shimo nakouchi	North/North/West	23km	2011/4/7	5.3	【※2】	0.0014		10.1
6	Minami Soma city Kashima ward Nishimachi	North	32km	2011/3/17	1.8		0.0008	【※6】	4.6
7	Minami Soma city Kashima ward Terauchi Motoyashiki	North/North/West	32km	2011/3/17	1.4	【※5】	0.0006		3.4
103	Minami Soma city Haramachi ward Taka Mamegarauchi	North	21km	2011/4/7	1.2	【※2】	0.0004		2.6
80	Minami Soma city Haramachi ward Takami town	North	25km	2011/3/20	1.1	【※2】【※5】	0.0003		2.2
4	Date county Kawamata town oaza Tsurusawa aza Kawabata	North/West	47km	2011/3/17	2.3		0.0008		5.2
78	Date county kawamata town Tsurusawa	North/West	48km	2011/3/20	2.2	【※2】	0.0008		5.0
37	Date city Ryozen town Ishida Hojizawa	North/West	48km	2011/3/31	8.4	【※2】	0.0030		19.0
3	Date city Ryozen town Ishida Hikohei	North/West	46km	2011/3/17	5.2		0.0020		12.3
102	Date city Tsukidate town	North/West	51km	2011/4/7	2.8	【※2】	0.0009		5.8
101	Date city Ryozen town Oishi aza Minowa	North/West	55km	2011/4/7	2.4	【※2】	0.0002		3.0
2	Fukushima city Onami Takinoiri	North/West	56km	2011/3/17	5.0		0.0015		10.3
88	Fukushima city Higarigaoka	West/North/West	58km	2011/4/3	3.5	【※2】	0.0011		7.5
1	Fukushima city Sugitsuma town	North/West	62km	2011/3/16	2.1	【※5】	0.0005		3.7
85	Fukushima city Arai Harajiku	West/North/West	66km	2011/3/27	0.9	【※2】	0.0005		2.7
114	Iwaki City Ogawa town Kamiogawa	South/West	26km	2011/3/20	2.5	【※2】	0.0013		7.0
73	Iwaki City Yotsukura town	South	35km	2011/3/20	1.1	【※2】	0.0005		2.9
44	Iwaki City Ohisa town Ohisa Yanomezawa	South/South/West	28km	2011/3/17	1.5		0.0003		2.5
72	Iwaki city Hisanohama town Hisanohama aza Kitaaramaki	South	31km	2011/3/20	1.1	【※2】	0.0004		2.5
38	Iwaki City Yotsukura town Shiraiwa Hokita	South/South/West	34km	2011/3/31	1.0	【※2】【※5】	0.0004		2.4
106	Iwaki city Kawamae town Ojroi aza Syokangoya	West/South/West	32km	2011/4/7	0.6	【※2】	0.0003		1.7
74	Iwaki city Ogawa town Takahagi	South/South/West	36km	2011/3/20	0.7	【※2】	0.0002		1.4
84	Iwaki city Miwa-town Saiso	South/West	39km	2011/3/26	0.5	【※2】【※5】	0.0002		1.1
75	Iwaki city Uchigoumiyamaya town	South/South/West	43km	2011/3/20	0.5	【※2】	0.0002		1.1
45	Futaba county Naraha town Yamadaoka Utsukushimori	South	20km	2011/3/17	1.9		0.0006		3.9
71	Futaba county Hirono town Shimokitaba Nawashirogae	South	23km	2011/3/20	1.5	【※2】【※5】	0.0004		2.9
11	Nihonmatsu city Ota aza Shimoda	West/North/West	43km	2011/3/17	2.6		0.0010		5.9
35	Nihonmatsu city Tazawahagidaira	West/North/West	37km	2011/3/19	1.8	【※2】	0.0009	【※6】	4.9
10	Nihonmatsu city Harimichi Nakajima	West/North/West	44km	2011/3/17	1.8		0.0006		3.8

Estimated Integrated Dose at Each Monitoring Location based on Measured Values

Location Number	Reading Point【※1】	From TEPCO Fukushima Dai-ichi NPP		Date on which air dose monitoring was commenced	Estimates of Integrated Dose 【※1】		Latest Readings (Mean value) 【※3】		Estimates of Integrated Dose as of March 11, 2012 (mSv) 【※4】
		Direction	Distance		(mSv)	Note	(mSv/h)	Note	
86	Koriyama city Ootsuki town Choemonbayashi	West	63km	2011/3/27	2.2	【※2】	0.0007		4.6
87	Futaba county Kawauchi Village Kamikawauchi Hananouchi	West/South/West	29km	2011/3/27	1.9	【※2】	0.0007		4.4
43	Futaba county Kawauchi Village Shimokawauchi Miyawata	West/South/West	22km	2011/3/16	1.0		0.0004		2.4
76	Futaba county Kawauchi Village Kamikawauchi Hayawata	West/South/West	22km	2011/3/20	1.0	【※2】【※5】	0.0003		2.2
15	Tamura city Tokiwa town Yamane Kashima	West	32km	2011/3/17	1.8	【※5】	0.0007		4.1
42	Tamura city Tokiwa town Yamane Tomioka	West	33km	2011/3/17	1.6		0.0006		3.9
23	Tamura City Hunehiki town Minamiutsushi Suicyuuchi	West/North/West	37km	2011/3/17	1.4		0.0005		3.1
41	Tamura city Miyakoji town Furumichi	West	21km	2011/3/17	1.4		0.0004		2.9
20	Tamura City Hunehiki town Niitate shimo	West	41km	2011/3/17	1.1		0.0005		2.7
105	Tamura city Miyakoji town Furumichi aza Teranomae	West	21km	2011/4/7	0.8	【※2】	0.0004		2.0
22	Tamura city Hunehiki town Kamiutsushi Aza Ushirota	West/North/West	35km	2011/3/17	0.9		0.0003		2.0
12	Tamura city Tokiwa town Nishimuki Yakata	West	39km	2011/3/17	0.6		0.0003	【※6】	1.6
13	Tamura city Hunehiki town Funehiki aza Ozawakawashiro	West	37km	2011/3/17	0.8		0.0002		1.5
14	Tamura city Tokiwa town Tokiwa Uchimachi	West	34km	2011/3/17	0.6		0.0003		1.5
52	Tamura city Hunehiki town funehiki Babakawara	West	41km	2011/3/17	0.5		0.0002		1.2
39	Soma city Yamakami Kaminamiki	North/North/West	41km	2011/4/1	1.4	【※2】【※5】	0.0005		3.0
5	Soma city Nakanoteramae	North/North/West	42km	2011/3/17	1.1		0.0004		2.5
51	Tamura county Ono town Ononimachi Tatemawari	West/South/West	39km	2011/3/17	0.6		0.0001		1.0

This table was jointly compiled by the Nuclear Safety Commission, MEXT, and the Nuclear and Industrial Safety Agency.

*1 Shown values are integrated values monitored from 6:00, March 12 through 24:00, July 11.

The same estimation method as that used by the Nuclear Safety Commission on March 26, 2011 is used, whereby the values are estimated by multiplying the monitored values by 0.6 in consideration of the reduction effect of wooden buildings (0.4) when staying outdoors for eight hours and indoors for 16 hours.

*2 For locations where the monitoring was started on or after March 19, the dose data for the period from March 17 to the day before the start of monitoring has been derived by assuming that the dose has changed in proportion to changes at Location No. 32, where the steepest dose change has been observed.

*3: The average of the estimates from July 9 to July 11. As for locations [*5] where actual values have been obtained by a simple integrating dosimeter, this is the average (from July 9 to July 11) of the integrated values monitored since the time of the previous data sampling divided by the time lapsed.

*4 Shown values have been obtained by the same method as that mentioned in *1, while supposing that the Latest Readings (Mean value) [*3] will stay unchanged on and after July 12.

*5 For the period where actual values monitored by a simple integrating dosimeter are available, such values are indicated.

*6: As there are no monitored values available from July 9 to July 11, shown values have been obtained by the same method as that mentioned in *3, while supposing that the doses are proportionate to those at location 32.

Estimated Integrated Dose at Each Monitoring Location based on Measured Values

Location Number	Reading Point【※11】	From TEPCO Fukushima Dai-ichi NPP		Date on which air dose monitoring was commenced	Estimates of Integrated Dose (mSv) 【※8、9】	Latest Readings (Average) (mSv/h)	Estimates of Integrated Dose as of March 11, 2012 (mSv) 【※10】
		Direction	Distance				
(3)Planned evacuation zones (added point)							
i27	Soma county Iitate Village Nagadoro	North/West	33km	2011/4/26	37.4	0.0177	99.7
i28	Soma county Iitate Village Hiso	North/West	34km	2011/4/26	42.5	0.0129	87.7
i26	Soma county Iitate Village Nagadoro	North/West	31km	2011/4/26	28.0	0.0099	62.6
i24	Soma county Iitate Village Komiya	North/West	32km	2011/4/26	24.6	0.0088	55.4
i25	Soma county Iitate Village Warabidaira	North/West	29km	2011/4/26	23.5	0.0076	50.3
i4	Soma county Iitate Village Fukaya	North/West	41km	2011/4/25	22.7	0.0078	50.2
i22	Soma county Iitate Village Komiya	North/West	35km	2011/4/26	19.3	0.0073	45.1
i13	Soma county Iitate Village Maeta	North/West	43km	2011/4/25	18.2	0.0055	37.6
i29	Soma county Iitate Village Hiso	North/West	38km	2011/4/26	16.3	0.0058	36.5
i23	Soma county Iitate Village Komiya	North/West	36km	2011/4/26	15.9	0.0058	36.3
i19	Soma county Iitate Village Sekisawa	North/West	38km	2011/4/26	17.2	0.0052	35.3
i21	Soma county Iitate Village Komiya	North/West	33km	2011/4/26	15.1	0.0053	33.7
i20	Soma county Iitate Village Sekisawa	North/West	36km	2011/4/26	15.9	0.0048	32.9
i10	Soma county Iitate Village Sasu	North/West	46km	2011/4/25	13.8	0.0048	30.5
i6	Soma county Iitate Village Fukaya	North/West	41km	2011/4/25	16.5	0.0040	30.4
i14	Soma county Iitate Village Kusano	North/West	40km	2011/4/25	13.9	0.0045	29.6
i9	Soma county Iitate Village Maeta	North/West	45km	2011/4/25	14.6	0.0042	29.4
i7	Soma county Iitate Village Usuishi	North/West	42km	2011/4/25	12.6	0.0044	28.1
i2	Soma county Iitate Village Itamizawa	North/West	39km	2011/4/25	12.5	0.0043	27.6
i31	Soma county Iitate Village Itoi	North/West	38km	2011/4/26	12.7	0.0039	26.5
i5	Soma county Iitate Village Fukaya	North/West	40km	2011/4/25	12.1	0.0040	26.2
i3	Soma county Iitate Village Kusano	North/West	39km	2011/4/25	12.2	0.0039	25.9
i11	Soma county Iitate Village Sasu	North/West	46km	2011/4/25	11.2	0.0041	25.7
i1	Soma county Iitate Village Itamizawa	North/West	39km	2011/4/25	11.1	0.0038	24.6
i18	Soma county Iitate Village Yagisawa	North/West	36km	2011/4/25	10.0	0.0035	22.3
i32	Soma county Iitate Village Itoi	North/West	37km	2011/4/26	10.8	0.0032	22.1
i30	Soma county Iitate Village Itoi	North/West	40km	2011/4/26	11.0	0.0025	20.0
i17	Soma county Iitate Village Kusano	North/West	38km	2011/4/25	10.2	0.0027	19.6
i12	Soma county Iitate Village Sasu	North/West	43km	2011/4/25	7.5	0.0026	16.8
i15	Soma county Iitate Village Ookura	North/North/West	40km	2011/4/25	8.0	0.0024	16.6
i8	Soma county Iitate Village Nimaibashi	North/West	44km	2011/4/25	6.8	0.0026	15.9
i16	Soma county Iitate Village Ookura	North/North/West	40km	2011/4/25	6.1	0.0021	13.6
K8	Futaba County Katsurao Viillage Katsurao	North/West	21km	2011/4/25	50.5	0.0165	108.4
K7	Futaba County Katsurao Viillage Katsurao	North/West	23km	2011/4/25	25.9	0.0108	63.9
K6	Futaba County Katsurao Viillage Katsurao	West/North/West	26km	2011/4/25	24.9	0.0086	55.3
K9	Futaba County Katsurao Viillage Ochiai	West/North/West	21km	2011/4/25	8.3	0.0025	17.0
K4	Futaba County Katsurao Viillage Nogawa	West/North/West	28km	2011/4/25	6.8	0.0019	13.4
K11	Futaba County Katsurao Viillage Ochiai	West/North/West	21km	2011/4/25	5.4	0.0017	11.2
K1	Futaba County Katsurao Viillage Katsurao	West/North/West	32km	2011/4/25	5.6	0.0016	11.1
K2	Futaba County Katsurao Viillage Katsurao	West/North/West	30km	2011/4/25	5.0	0.0017	11.0
K3	Futaba County Katsurao Viillage Katsurao	West/North/West	28km	2011/4/25	4.5	0.0017	10.4
K10	Futaba County Katsurao Viillage Ochiai	West/North/West	24km	2011/4/25	3.9	0.0014	8.9
K5	Futaba County Katsurao Viillage Nogawa	West/North/West	29km	2011/4/25	4.4	0.0013	8.9
kw6	Date county Kawamata town Yamakiya	West/North/West	33km	2011/4/26	21.0	0.0071	46.1
kw4	Date county Kawamata town Yamakiya	West/North/West	37km	2011/4/26	7.3	0.0021	14.9
kw5	Date county Kawamata town Yamakiya	West/North/West	34km	2011/4/26	4.9	0.0016	10.4
kw3	Date county Kawamata town Yamakiya	West/North/West	40km	2011/4/26	4.9	0.0015	10.1
ms6	Minami Soma city Haramachi ward Baba aza Godaisan	North/West	21km	2011/4/26	30.8	0.0115	71.2
ms4	Minami Soma city Haramachi ward Takanokura aza Mori	North/North/West	27km	2011/4/26	12.9	0.0049	30.1

Estimated Integrated Dose at Each Monitoring Location based on Measured Values

Location Number	Reading Point【※11】	From TEPCO Fukushima Dai-ichi NPP		Date on which air dose monitoring was commenced	Estimates of Integrated Dose (mSv) 【※8、9】	Latest Readings (Average) (mSv/h)	Estimates of Integrated Dose as of March 11, 2012 (mSv) 【※10】
		Direction	Distance				
n5	Futaba county Namie town Hirusone	North/West	22km	2011/4/27	97.8	0.0395	236.7
n11	Futaba county Namie town Hirusone	North/West	20km	2011/5/2	70.9	0.0224	149.8
n2	Futaba county Namie town Akougi	North/West	28km	2011/4/27	52.2	0.0222	130.2
n1	Futaba county Namie town Akougi	North/West	31km	2011/4/27	57.0	0.0196	126.0
n4	Futaba county Namie town Akougi	North/West	26km	2011/4/27	49.6	0.0207	122.5
n7	Futaba county Namie town Minamitsushima	North/West	23km	2011/4/27	54.5	0.0193	122.2
n6	Futaba county Namie town Minamitsushima	North/West	25km	2011/4/27	42.9	0.0175	104.4
n8	Futaba county Namie town shimotsushima	North/West	27km	2011/4/27	36.7	0.0132	83.0
n3	Futaba county Namie town Akougi	North/West	28km	2011/4/27	33.7	0.0114	73.8
n9	Futaba county Namie town shimotsushima	West/North/West	29km	2011/4/27	24.9	0.0086	55.2
n10	Futaba county Namie town Hatsuke	West/North/West	33km	2011/4/27	5.3	0.0020	12.2
(4) Other zones (added point)							
kw1	Date county Kawamata town Kotsunagi	North/West	42km	2011/4/26	3.7	0.0011	7.5
kw2	Date county Kawamata town Kotsunagi	North/West	42km	2011/4/26	3.3	0.0011	7.1
ms1	Minami Soma city Haramachi ward Ohara aza Hebiishi	North/North/West	33km	2011/4/26	9.2	0.0037	22.1
ms5	Minami Soma city Haramachi ward Takakura aza Domae	North/North/West	26km	2011/4/26	7.7	0.0030	18.1
ms11	Minami Soma city Haramachi ward Ohara aza Daihata	North/North/West	29km	2011/4/26	6.1	0.0022	14.0
ms2	Minami Soma city Kashima ward Jisabara aza Kamahai	North/North/West	32km	2011/4/26	4.6	0.0017	10.7
ms3	Minami Soma city Kashima ward Kamitochikubo aza Kanodai	North/North/West	37km	2011/4/26	2.9	0.0015	8.3
ms7	Minami Soma city Haramachi ward Baba aza Nakouchi	North/North/West	23km	2011/4/26	3.1	0.0013	7.8
ms9	Minami Soma city Haramachi ward Takami town	North	24km	2011/4/26	1.1	0.0003	2.1
ms10	Minami Soma city Haramachi ward taka aza Mamegarauchi	North	21km	2011/4/26	0.6	0.0004	2.0
ms8	Minami Soma city Haramachi ward Kanezawa aza Oiai	North	28km	2011/4/26	0.6	0.0004	1.8
ni1	Nihonmatsu city Kamikawasaki	West/North/West	51km	2011/4/25	3.4	0.0013	7.9
ni2	Nihonmatsu city Tazawa	West/North/West	36km	2011/4/26	2.5	0.0007	5.0
mo1	Motomiya City Wada	West/North/West	52km	2011/4/25	6.0	0.0019	12.6
ko3	Koriyama city Toyota town	West	59km	2011/4/3	4.3	0.0018	10.5
ko1	Koriyama city Tsurumidan	West	59km	2011/4/25	3.9	0.0013	8.4
ko2	Koriyama city Saikon	West	60km	2011/4/25	3.5	0.0012	7.7
d4	Date city Ryozen town Kamioguni	North/West	55km	2011/4/27	8.4	0.0037	21.4
d2	Date city Ryozen town Shimooguni	North/West	55km	2011/4/27	7.2	0.0031	18.0
d3	Date city Ryozen town Kamioguni	North/West	55km	2011/4/27	6.1	0.0028	15.8
d5	Date city Ryozen town Ishida	North/West	48km	2011/4/27	6.7	0.0023	14.7
d13	Fukushima City Nankodai	North/West	59km	2011/4/27	5.0	0.0024	13.6
d11	Fukushima City Higashihama town	North/West	61km	2011/4/27	4.4	0.0020	11.5
d1	Fukushima City Minamiyanome	North/West	66km	2011/4/27	3.7	0.0018	10.0
d6	Fukushima City Koganeyama	North/West	62km	2011/4/27	4.1	0.0016	9.7
d12	Fukushima City Watari	North/West	61km	2011/4/27	3.5	0.0017	9.5
d8	Fukushima City Miyashita town	North/West	63km	2011/4/27	2.7	0.0014	7.6
d7	Fukushima City Sankyoue	North/West	63km	2011/4/27	2.7	0.0008	5.5
d10	Fukushima City Kamihama town	North/West	61km	2011/4/27	2.7	0.0008	5.4
d9	Fukushima City Shinhamat town	North/West	62km	2011/4/27	2.1	0.0010	5.4
115	Iwaki city Kawamae town Shimookeuri	South/West	28km	2011/5/30	8.7	0.0023	16.9
174	Iwaki city Ogawa town Takahagi	South/South/West	36km	2011/5/23	0.3	0.0001	0.6
112	Futaba county Hirono town Kamiiazamigawa	South/South/West	24km	2011/5/18	1.5	0.0006	3.6
177	Futaba county Kawauchi Village Shimokawauchi	South/West	25km	2011/5/23	2.6	0.0008	5.3
111	Futaba county Kawauchi Village Kamikawauchi	West/South/West	28km	2011/5/18	1.8	0.0006	3.9
181	Futaba county Kawauchi Village Kamikawauchi	West/South/West	25km	2011/5/20	1.4	0.0005	3.1
113	Tamura city Miyakoji town Iwaisawa	West	25km	2011/5/20	3.7	0.0012	8.0
110	Tamura city Miyakoji town Furumichi	West	25km	2011/5/18	3.1	0.0008	6.1

※8: Shown values are integrated values monitored from 6:00, March 12 through 24:00, July 11, incorporating the exposure reduction effect of wooden buildings when staying indoors for 16 hours.

※9: The dose data for the period from March 17 to the day before the start of monitoring has been derived by assuming that the dose has changed in proportion to changes at Location No. 32, where the steepest dose change has been observed.

※10: Shown values have been obtained while supposing that the latest estimates (the average of estimates from July 9 to July 11) will stay unchanged on and after July 12.

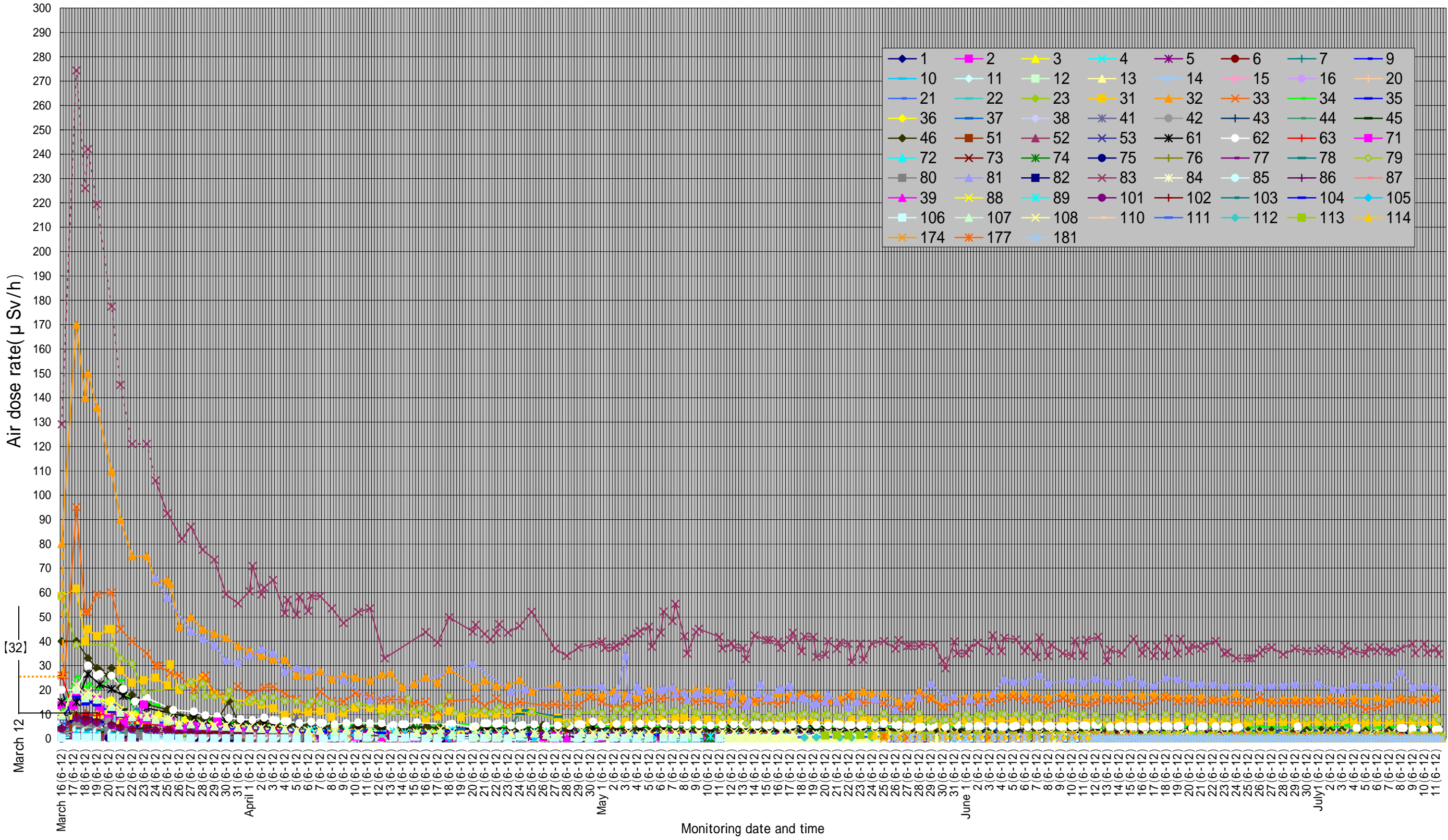
※11: Information on the latitude and longitude of each monitoring spot is available on the MEXT website.

Continued on the next page

To prepare the isogram map of estimated integrated doses, the values for a total of 2,762 locations were used (the 160 locations mentioned above plus the air dose monitoring locations mentioned below [2,602 locations]).

- 1) Air dose rates observed in the emergency environmental monitoring conducted by Fukushima Prefecture from March 30 to July 11: 101 locations
- 2) Air dose rates observed in monitoring conducted by MEXT on April 9 in Katsurao Village and Namie Town: 16 locations
- 3) Air dose rates observed in monitoring conducted by MEXT on April 12 and 14 in Iitate Village, Iwaki City, Katsurao Village, Kawauchi Village, Tamura City, Namie Town, Hirono Town, and Minami Soma City and in monitoring conducted by MEXT, etc. on June 5, 6, 10, 13, 14 and 24 in Date City, Minami Soma City, Iwaki City and Kawauchi Village: 407 locations
- 4) Air dose rates observed within the area covered by the isogram map in the grid survey conducted by Fukushima Prefecture from April 12 to April 16: 1,788 locations
- 5) Air dose rates observed within the area covered by the isogram map in the environmental radioactivity monitoring conducted by Fukushima Prefecture (municipalities and 7 regions in Fukushima : and areas within 20 to 50 km): 54 locations
- 6) Air dose rates observed inside the 20 km zone in monitoring conducted by MEXT and TEPCO : 228 locations
- 7) Air dose rates continuously monitored from April 12 at monitoring posts 1 to 8 near the border of the site of Fukushima Dai-ichi NPP: 8 locations

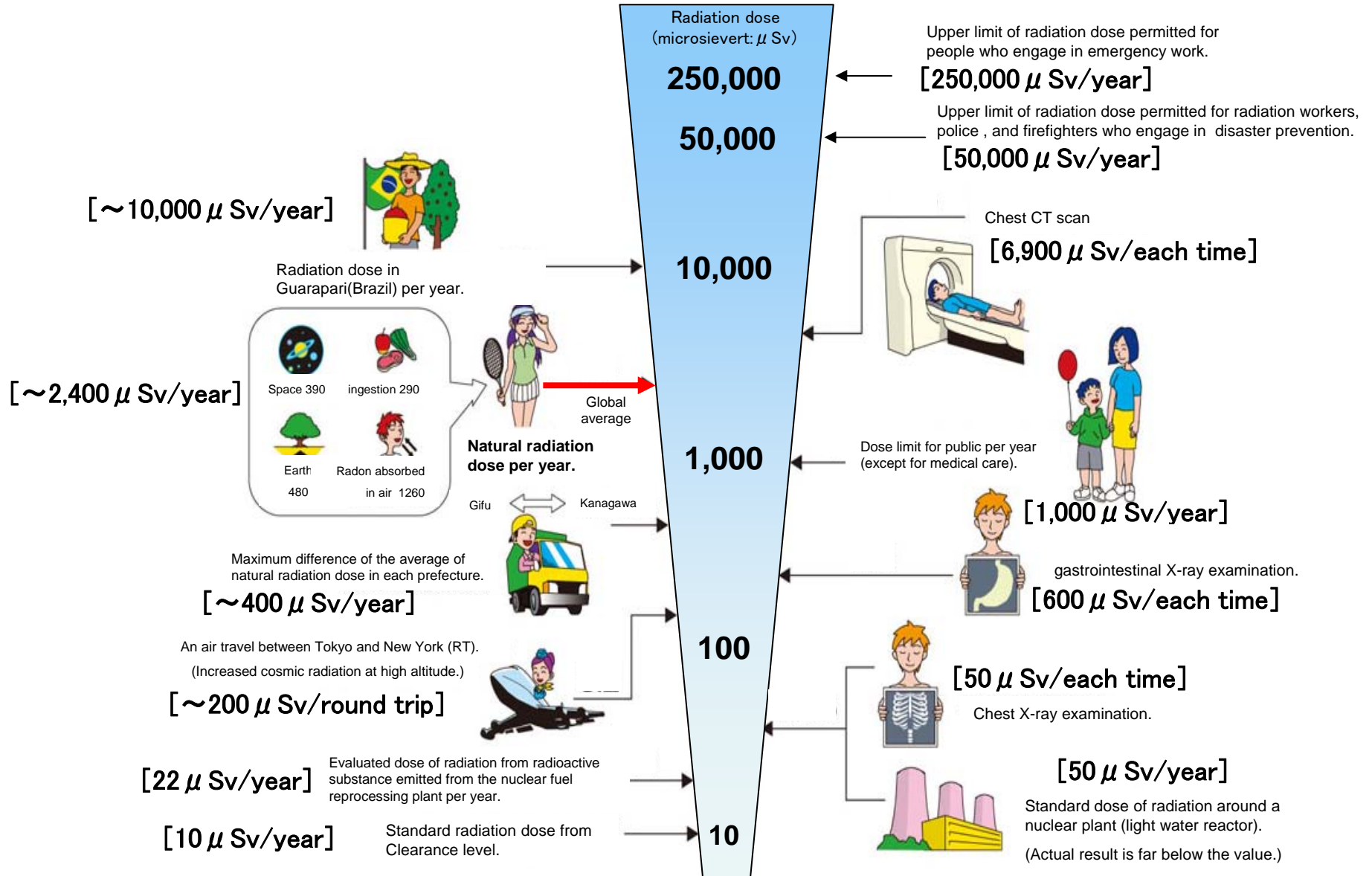
Changes in air dose rates



Notes: In cases where more than one reading was taken during the six-hour period, the maximum value is plotted.
The dotted lines show estimates assumed as being proportional to the value at location 32, not measured values.

Radiation in Daily-life

※Unit : μSv



※ Sv [Sievert] = Constant of organism effect by kind of radiation (※) × Gy [gray]

※ It is 1 in case of X ray and γ ray.