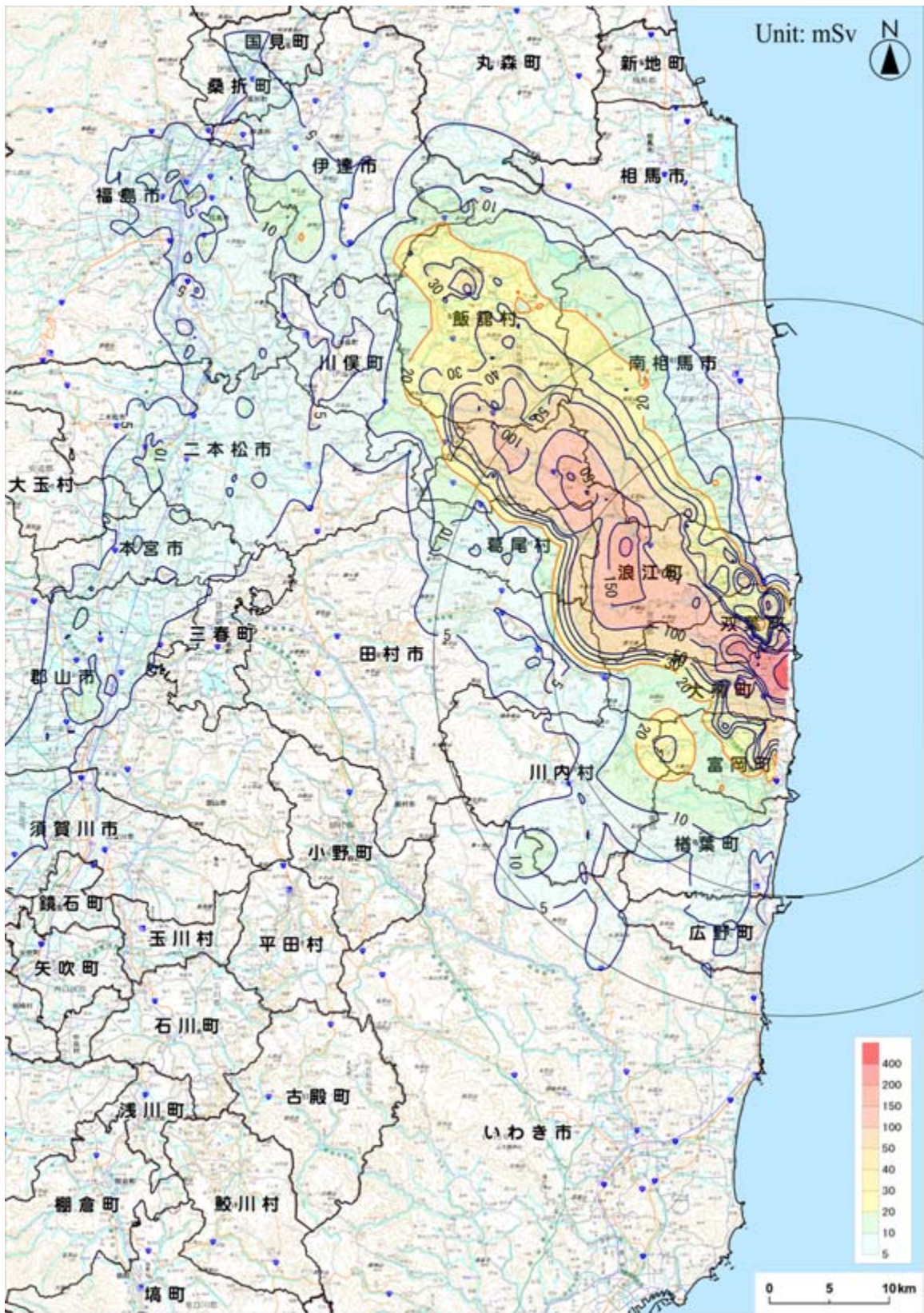


Dose Monitoring Map (Estimates) (As of June 11, 2011)



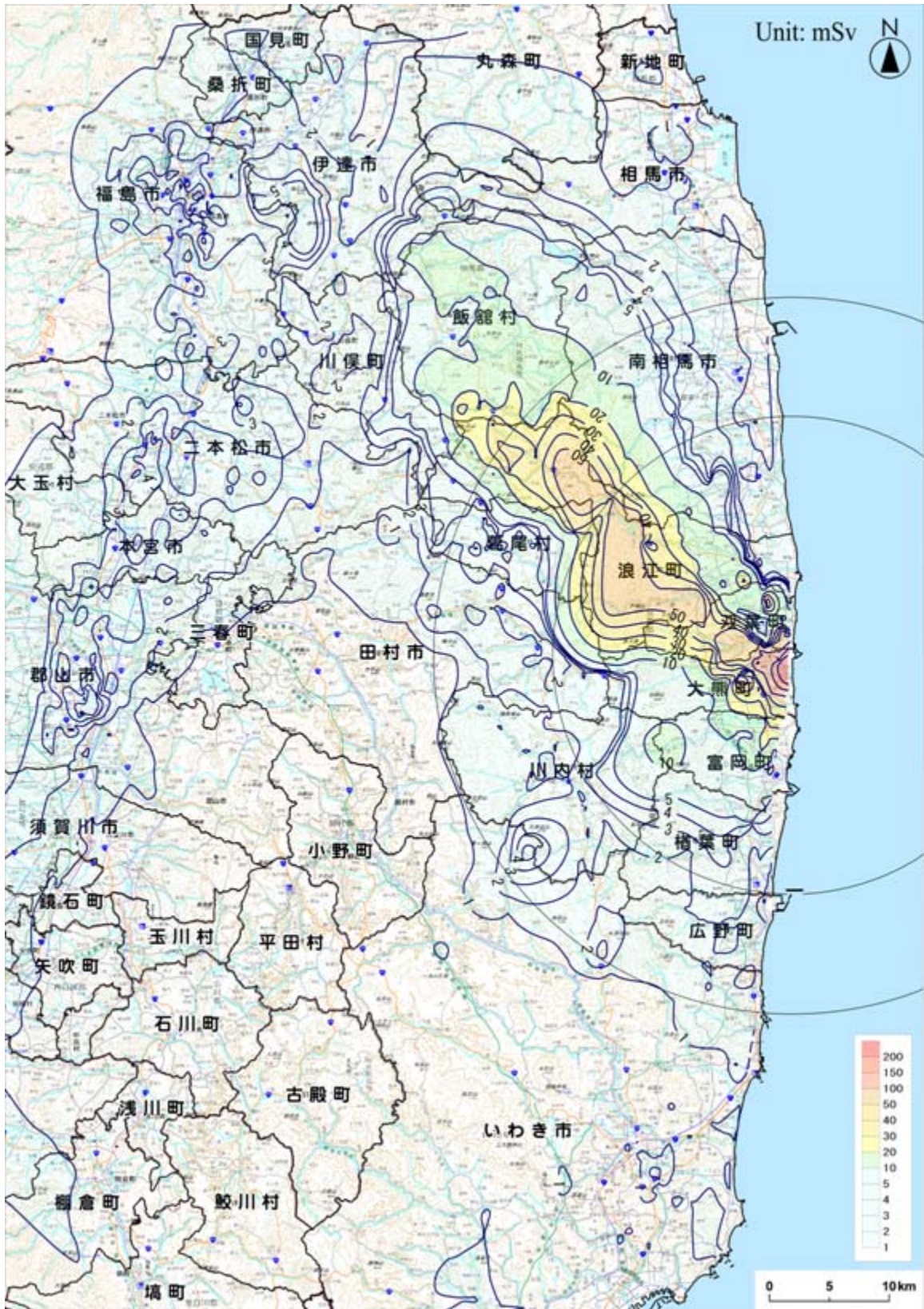
Map: Online map by the Geospatial Information Authority of Japan

Integrated Dose Map (Estimation) (Integrated Dose up to March 11, 2012)



Map: Online map by the Geospatial Information Authority of Japan
Adopting monitored values up to 24:00 on June 11, 2011

Integrated Dose Map (Estimation) (Integrated Dose up to June 11, 2011)



Map: Online map by the Geospatial Information Authority of Japan

Adopting monitored values up to 24:00 on June 11, 2011

Estimated Integrated Dose at Each Monitoring Location based on Measured Values

Location Number	Reading Point【※11】	TEPCO From Fukushima Dai-ichi NPP		Starting Date of Monitoring Air Dose Rate	Estimates of Integrated Dose 【※1】		Latest Readings (Mean value) 【※3】		Estimates of Integrated Dose as of March 11, 2012 (mSv) 【※4】
		Direction	Distance		(mSv)	Note	(mSv/h)	Note	
(1) Planned evacuation zones									
83	Futaba county Namie town Akougi Kunugidaira	North/West	24km	2011/3/24	77.4	【※2】	0.0366		221.9
81	Futaba county Namie town Akougi Ishikoya	North/West	30km	2011/3/24	42.1	【※2】	0.0242		137.4
32	Futaba county Namie town Akougi Teshichiro	North/West	31km	2011/3/16	36.7	【※5】	0.0151		96.2
79	Futaba county Namie town shimotsushima kayabuka	West/North/West	29km	2011/3/16	16.8	【※5】	0.0074		45.8
31	Futaba county Namie town Tsushima Nakaoki	West/North/West	30km	2011/3/17	16.1	【※5】	0.0065		41.9
34	Futaba county Namie town Tsushima Taikougi	West/North/West	30km	2011/3/19	7.8	【※2】【※5】	0.0032		20.6
21	Futaba County Katsurao Village Kaminogawa	West/North/West	32km	2011/3/17	4.8	【※5】	0.0028		15.9
104	Futaba county Katsurao Village Oaza Ochiai aza Ochiai	West/North/West	25km	2011/4/7	3.9	【※2】	0.0019		11.3
33	Soma county Iitate Village Nagadoro	North/West	33km	2011/3/16	20.6	【※5】	0.0081		52.5
62	Soma county Iitate Village Kusano Taishido	North/West	39km	2011/3/17	9.8		0.0052		30.1
61	Soma county Iitate Village Yagisawa	North/West	36km	2011/3/17	7.6		0.0038		22.7
63	Soma county Iitate Village Nimaibashi	North/West	44km	2011/3/17	3.2		0.0014		8.6
46	Date county Kawamata town Yamakiya Mukaideyama	West/North/West	34km	2011/3/17	8.8		0.0034		22.1
36	Date county Kawamata town Yamakiya Oonukari	West/North/West	38km	2011/3/20	6.0	【※2】	0.0028		17.0
(2) Other zones									
108	Minami Soma city Haramachi ward Ohara Daihata	North/North/West	30km	2011/4/7	5.6	【※2】	0.0024		15.3
107	Minami Soma city Haramachi ward Baba shimo nakouchi	North/North/West	23km	2011/4/7	4.6	【※2】	0.0016		11.1
6	Minami Soma city Kashima ward Nishimachi	North	32km	2011/3/17	1.5		0.0009	【※6】	4.9
7	Minami Soma city Kashima ward Terauchi Motoyashiki	North/North/West	32km	2011/3/17	1.2	【※5】	0.0006		3.6
103	Minami Soma city Haramachi ward Taka Mamegarauchi	North	21km	2011/4/7	1.1	【※2】	0.0004		2.8
80	Minami Soma city Haramachi ward Takami town	North	25km	2011/3/20	1.1	【※2】【※5】	0.0003		2.4
4	Date county Kawamata town oaza Tsurusawa aza Kawabata	North/West	47km	2011/3/17	1.9		0.0010		5.8
78	Date county kawamata town Tsurusawa	North/West	48km	2011/3/20	2.0	【※2】	0.0009		5.7
37	Date city Ryozen town Ishida Hojizawa	North/West	48km	2011/3/31	7.0	【※2】	0.0033		19.9
3	Date city Ryozen town Ishida Hikohei	North/West	46km	2011/3/17	4.3		0.0023		13.2
102	Date city Tsukidate town	North/West	51km	2011/4/7	2.3	【※2】	0.0011		6.5
101	Date city Ryozen town Oishi aza Minowa	North/West	55km	2011/4/7	2.1	【※2】	0.0009		5.6
2	Fukushima city Onami Takinoiri	North/West	56km	2011/3/17	4.3		0.0018		11.5
88	Fukushima city Higarigaoka	West/North/West	58km	2011/4/3	3.1	【※2】	0.0007		6.0
1	Fukushima city Sugitsuma town	North/West	62km	2011/3/16	1.9	【※5】	0.0005		3.8
85	Fukushima city Arai Harajiku	West/North/West	66km	2011/3/27	0.8	【※2】	0.0003		1.9
114【※7】	Iwaki City Ogawa town Kamiogawa	South/West	26km	2011/3/20	2.0	【※2】	0.0014		7.5
73	Iwaki City Yotsukura town	South	35km	2011/3/20	0.9	【※2】	0.0005		2.8
44	Iwaki City Ohisa town Ohisa Yanomezawa	South/South/West	28km	2011/3/17	1.3		0.0003		2.5
38	Iwaki City Yotsukura town Shiraiwa Hokita	South/South/West	34km	2011/3/31	0.8	【※2】【※5】	0.0004		2.3
72	Iwaki city Hisanohama town Hisanohama aza Kitaaramaki	South	31km	2011/3/20	1.0	【※2】	0.0002		2.0
106	Iwaki city Kawamae town Ojiroi aza Syokangoya	West/South/West	32km	2011/4/7	0.5	【※2】	0.0004		1.9
74	Iwaki city Ogawa town Takahagi	South/South/West	36km	2011/3/20	0.7	【※2】	0.0002		1.4
75	Iwaki city Uchigoumiyamaya town	South/South/West	43km	2011/3/20	0.4	【※2】	0.0002		1.0
84	Iwaki city Miwa town Saiso	South/West	39km	2011/3/26	0.4	【※2】【※5】	0.0001		0.9
45	Futaba county Naraha town Yamadaoka Utsukushimori	South	20km	2011/3/17	1.7		0.0005		3.6
71	Futaba county Hirono town Shimokitaba Nawashirogae	South	23km	2011/3/20	1.3	【※2】【※5】	0.0003		2.7
11	Nihonmatsu city Ota aza Shimoda	West/North/West	43km	2011/3/17	2.1		0.0012	【※6】	6.7
35	Nihonmatsu city Tazawahagidaira	West/North/West	37km	2011/3/19	1.4	【※2】	0.0008		4.4
10	Nihonmatsu city Harimichi Nakajima	West/North/West	44km	2011/3/17	1.5		0.0007		4.3

Estimated Integrated Dose at Each Monitoring Location based on Measured Values

Location Number	Reading Point【※1】	TEPCO From Fukushima Dai-ichi NPP		Starting Date of Monitoring Air Dose Rate	Estimates of Integrated Dose 【※1】		Latest Readings (Mean value) 【※3】		Estimates of Integrated Dose as of March 11, 2012 (mSv) 【※4】
		Direction	Distance		(mSv)	Note	(mSv/h)	Note	
86	Koriyama city Ootsuki town Choemonbayashi	West	63km	2011/3/27	1.9	【※2】	0.0008		5.1
87	Futaba county Kawauchi Village Kamikawauchi Hananouchi	West/South/West	29km	2011/3/27	1.5	【※2】	0.0008		4.7
43	Futaba county Kawauchi Village Shimokawauchi Miyawata	West/South/West	22km	2011/3/16	0.8		0.0004		2.5
76	Futaba county Kawauchi Village Kamikawauchi Hayawata	West/South/West	22km	2011/3/20	0.9	【※2】【※5】	0.0003		2.2
15	Tamura city Tokiwa town Yamane Kashima	West	32km	2011/3/17	1.5	【※5】	0.0008		4.5
42	Tamura city Tokiwa town Yamane Tomioka	West	33km	2011/3/17	1.3		0.0006		3.7
23	Tamura City Hunehiki town Minamiutsushi Suicyuuchi	West/North/West	37km	2011/3/17	1.1		0.0005		3.3
41	Tamura city Miyakoji town Furumichi	West	21km	2011/3/17	1.2		0.0005		3.1
20	Tamura City Hunehiki town Niitate shimo	West	41km	2011/3/17	0.9		0.0005		2.8
105	Tamura city Miyakoji town Furumichi aza Teranomae	West	21km	2011/4/7	0.6	【※2】	0.0004		2.1
22	Kamiutsushi Kamiutsushi Aza Ushirota	West/North/West	35km	2011/3/17	0.8		0.0003		2.0
13	Tamura city Tokiwa town Nishimuki Yakata	West	37km	2011/3/17	0.6		0.0003		1.8
12	Tamura city Hunehiki town Funehiki aza Ozawakawashiro	West	39km	2011/3/17	0.5		0.0003	【※6】	1.7
14	Tamura city Tokiwa town Tokiwa Uchimachi	West	34km	2011/3/17	0.5		0.0003		1.6
52	Tamura city Hunehiki town funehiki Babakawara	West	41km	2011/3/17	0.4		0.0002		1.2
39	Soma city Yamakami Kaminamiki	North/North/West	41km	2011/4/1	1.2	【※2】【※5】	0.0006		3.4
5	Soma city Nakanoteramae	North/North/West	42km	2011/3/17	1.0		0.0004		2.6
51	Tamura county Ono town Ononiimachi Tatemawari	West/South/West	39km	2011/3/17	0.5		0.0002		1.3

This table was jointly compiled by the Nuclear Safety Commission, MEXT, and the Nuclear and Industrial Safety Agency.

*1 Shown values are integrated values monitored from 6:00, March 12 through 24:00, April 21. The same estimation method as that used by the Nuclear Safety Commission on March 28, 2011 is used, whereby the values are estimated by multiplying the monitored values by 0.6 in consideration of the reduction effect of wooden buildings (0.4) when staying outdoors for eight hours and indoors for 16 hours.

*2 For locations where the monitoring was started on or after March 19, the dose data for the period from March 17 to the day before the start of monitoring has been derived by assuming that the dose has changed in proportion to changes at Location No. 32, where the steepest dose change has been observed.

*3 The average of the estimates from June 9 to June 11. As for locations [*5] where actual values have been obtained by a simple integrating dosimeter, this is the average (from June 9 to June 11) of the integrated values monitored since the time of the previous data sampling divided by the time lapsed.

*4 Shown values have been obtained by the same method as that mentioned in *1, while supposing that the Latest Readings (Mean value) [*3] will stay unchanged on and after June 12.

*5 For the period where actual values monitored by a simple integrating dosimeter are available, such values are indicated.

*6 As there are no monitored values available from June 9 to June 11, shown values have been obtained by the same method as that mentioned in *3, while supposing that the doses are proportionate to those at location 32.

*7 Changed from former location no. 77

Estimated Integrated Dose at Each Monitoring Location based on Measured Values

Location Number	Reading Point【※11】	TEPCO From Fukushima Dai-ichi NPP		Starting Date of Monitoring Air Dose Rate	Estimates of Integrated Dose (mSv) 【※8、9】	Latest Readings (Average) (mSv/h)	Estimates of Integrated Dose as of March 11, 2012 (mSv) 【※4】
		Direction	Distance				
(3)Planned evacuation zones(added point)							
i28	Soma county Iitate Village Hiso	North/West	34km	2011/4/26	36.8	0.0131	88.3
i27	Soma county Iitate Village Nagadoro	North/West	33km	2011/4/26	29.5	0.0148	87.9
i26	Soma county Iitate Village Nagadoro	North/West	31km	2011/4/26	23.6	0.0107	65.6
i4	Soma county Iitate Village Fukaya	North/West	41km	2011/4/25	19.2	0.0104	60.4
i24	Soma county Iitate Village Komiya	North/West	32km	2011/4/26	20.9	0.0097	59.2
i25	Soma county Iitate Village Warabidaira	North/West	29km	2011/4/26	20.0	0.0084	53.0
i22	Soma county Iitate Village Komiya	North/West	35km	2011/4/26	16.1	0.0073	44.9
i20	Soma county Iitate Village Sekisawa	North/West	36km	2011/4/26	13.3	0.0073	42.2
i19	Soma county Iitate Village Sekisawa	North/West	38km	2011/4/26	14.7	0.0067	41.2
i13	Soma county Iitate Village Maeta	North/West	43km	2011/4/25	15.8	0.0058	38.8
i21	Soma county Iitate Village Komiya	North/West	33km	2011/4/26	12.8	0.0061	36.7
i29	Soma county Iitate Village Hiso	North/West	38km	2011/4/26	13.8	0.0056	36.0
i23	Soma county Iitate Village Komiya	North/West	36km	2011/4/26	13.3	0.0057	35.7
i14	Soma county Iitate Village Kusano	North/West	40km	2011/4/25	12.0	0.0051	32.1
i9	Soma county Iitate Village Maeta	North/West	45km	2011/4/25	12.8	0.0049	32.0
i6	Soma county Iitate Village Fukaya	North/West	41km	2011/4/25	14.4	0.0044	31.7
i7	Soma county Iitate Village Usuish	North/West	42km	2011/4/25	10.8	0.0047	29.4
i5	Soma county Iitate Village Fukaya	North/West	40km	2011/4/25	10.4	0.0048	29.3
i2	Soma county Iitate Village Itamizawa	North/West	39km	2011/4/25	10.7	0.0047	29.2
i3	Soma county Iitate Village Kusano	North/West	39km	2011/4/25	10.5	0.0045	28.2
i10	Soma county Iitate Village Sasu	North/West	46km	2011/4/25	11.9	0.0040	27.7
i1	Soma county Iitate Village Itamizawa	North/West	39km	2011/4/25	9.4	0.0045	27.1
i11	Soma county Iitate Village Sasu	North/West	46km	2011/4/25	9.4	0.0041	25.7
i31	Soma county Iitate Village Itoi	North/West	38km	2011/4/26	10.6	0.0036	24.9
i18	Soma county Iitate Village Yagisawa	North/West	36km	2011/4/25	8.4	0.0041	24.5
i17	Soma county Iitate Village Kusano	North/West	38km	2011/4/25	8.8	0.0037	23.3
i32	Soma county Iitate Village Itoi	North/West	37km	2011/4/26	8.8	0.0033	22.0
i30	Soma county Iitate Village Itoi	North/West	40km	2011/4/26	9.6	0.0029	20.9
i15	Soma county Iitate Village Ookura	North/North/West	40km	2011/4/25	6.9	0.0029	18.3
i8	Soma county Iitate Village Nimaibashi	North/West	44km	2011/4/25	5.7	0.0031	18.1
i12	Soma county Iitate Village Sasu	North/West	43km	2011/4/25	6.4	0.0028	17.4
i16	Soma county Iitate Village Ookura	North/North/West	40km	2011/4/25	5.1	0.0025	14.9
K8	Futaba County Katsurao Viillage Katsurao	North/West	21km	2011/4/25	43.1	0.0184	115.6
K6	Futaba County Katsurao Viillage Katsurao	West/North/West	26km	2011/4/25	21.0	0.0096	58.9
K7	Futaba County Katsurao Viillage Katsurao	North/West	23km	2011/4/25	21.6	0.0094	58.7
K9	Futaba County Katsurao Viillage Ochiai	West/North/West	21km	2011/4/25	7.2	0.0026	17.5
K4	Futaba County Katsurao Viillage Nogawa	West/North/West	28km	2011/4/25	5.9	0.0020	13.7
K11	Futaba County Katsurao Viillage Ochiai	West/North/West	21km	2011/4/25	4.6	0.0020	12.4
K2	Futaba County Katsurao Viillage Katsurao	West/North/West	30km	2011/4/25	4.2	0.0018	11.4
K1	Futaba County Katsurao Viillage Katsurao	West/North/West	32km	2011/4/25	4.9	0.0016	11.3
K3	Futaba County Katsurao Viillage Katsurao	West/North/West	28km	2011/4/25	3.8	0.0018	11.0
K10	Futaba County Katsurao Viillage Ochiai	West/North/West	24km	2011/4/25	3.3	0.0014	8.9
K5	Futaba County Katsurao Viillage Nogawa	West/North/West	29km	2011/4/25	3.8	0.0013	8.9
kw6	Date county Kawamata town Yamakiya	West/North/West	33km	2011/4/26	17.7	0.0085	51.1
kw4	Date county Kawamata town Yamakiya	West/North/West	37km	2011/4/26	6.3	0.0027	17.0
kw5	Date county Kawamata town Yamakiya	West/North/West	34km	2011/4/26	4.2	0.0018	11.2
kw3	Date county Kawamata town Yamakiya	West/North/West	40km	2011/4/26	4.2	0.0018	11.2
ms6	Minami Soma city Haramachi ward Baba	North/West	21km	2011/4/26	26.0	0.0125	75.5
ms4	Minami Soma city Haramachi ward Takanokura	North/West	27km	2011/4/26	10.6	0.0061	34.7

Estimated Integrated Dose at Each Monitoring Location based on Measured Values

Location Number	Reading Point【※11】	TEPCO From Fukushima Dai-ichi NPP		Starting Date of Monitoring Air Dose Rate	Estimates of Integrated Dose (mSv) 【※8、9】	Latest Readings (Average) (mSv/h)	Estimates of Integrated Dose as of March 11, 2012 (mSv) 【※4】
		Direction	Distance				
n5	Futaba county Namie town Hirusone	North/West	22km	2011/4/27	82.0	0.0344	217.7
n11	Futaba county Namie town Hirusone	North/West	20km	2011/5/2	61.1	0.0247	158.6
n1	Futaba county Namie town Akougi	North/West	31km	2011/4/27	47.9	0.0242	143.4
n7	Futaba county Namie town Minamitsushima	North/West	23km	2011/4/27	45.9	0.0215	130.8
n4	Futaba county Namie town Akougi	North/West	26km	2011/4/27	40.7	0.0212	124.4
n2	Futaba county Namie town Akougi	North/West	28km	2011/4/27	42.7	0.0203	122.7
n6	Futaba county Namie town Minamitsushima	North/West	25km	2011/4/27	35.7	0.0164	100.5
n8	Futaba county Namie town shimotsushima	North/West	27km	2011/4/27	30.8	0.0146	88.5
n3	Futaba county Namie town Akougi	North/West	28km	2011/4/27	28.5	0.0138	83.1
n9	Futaba county Namie town shimotsushima	West/North/West	29km	2011/4/27	21.0	0.0094	58.1
n10	Futaba county Namie town Hatsuke	West/North/West	33km	2011/4/27	4.5	0.0021	12.7
(4)Other zones (added point)							
kw1	Date county Kawamata town Kotsunagi	North/West	42km	2011/4/26	3.2	0.0014	8.6
kw2	Date county Kawamata town Kotsunagi	North/West	42km	2011/4/26	2.8	0.0013	7.8
ms1	Minami Soma city Haramachi ward Ohara	North/North/West	33km	2011/4/26	7.7	0.0042	24.1
ms5	Minami Soma city Haramachi ward Takanoakura	North/North/West	25km	2011/4/26	6.4	0.0036	20.4
ms11	Minami Soma city Haramachi ward Ohara	North/North/West	29km	2011/4/26	5.1	0.0025	15.0
ms2	Minami Soma city Kashima ward Jisabara	North/North/West	32km	2011/4/26	3.9	0.0019	11.3
ms7	Minami Soma city Haramachi ward Baba	North/North/West	22km	2011/4/26	2.5	0.0016	8.7
ms3	Minami Soma city Kashima ward Kamitochikubo	North/North/West	36km	2011/4/26	2.3	0.0015	8.0
ms9	Minami Soma city Haramachi ward Takami town	North	24km	2011/4/26	0.9	0.0003	2.2
ms8	Minami Soma city Haramachi ward Kanezawa	North	27km	2011/4/26	0.4	0.0004	2.1
ms10	Minami Soma city Haramachi ward taka	North	21km	2011/4/26	0.4	0.0004	2.1
ni1	Nihonmatsu city Kamikawasaki	West/North/West	51km	2011/4/25	2.9	0.0013	8.0
ni2	Nihonmatsu city Tazawa	West/North/West	36km	2011/4/26	2.2	0.0008	5.5
mo1	Motomiya City Wada	West/North/West	52km	2011/4/25	5.2	0.0021	13.5
ko3【※12】	Koriyama city Toyota town	West	59km	2011/4/3	3.5	0.0020	11.4
ko2	Koriyama city Saikon	West	60km	2011/4/25	3.0	0.0014	8.5
ko1	Koriyama city Tsurumidan	West	59km	2011/4/25	3.4	0.0013	8.5
d4	Date city Ryozen town Kamioguni	North/West	55km	2011/4/27	6.8	0.0030	18.6
d2	Date city Ryozen town Shimooguni	North/West	55km	2011/4/27	6.1	0.0029	17.3
d5	Date city Ryozen town Ishida	North/West	48km	2011/4/27	5.8	0.0025	15.4
d3	Date city Ryozen town Kamioguni	North/West	55km	2011/4/27	5.1	0.0023	14.1
d13	Fukushima City Nankodai	North/West	59km	2011/4/27	4.1	0.0022	12.7
d11	Fukushima City Higashihama town	North/West	61km	2011/4/27	3.6	0.0019	11.1
d6	Fukushima City Koganeyama	North/West	62km	2011/4/27	3.4	0.0017	10.2
d1	Fukushima City Minamiyanome	North/West	66km	2011/4/27	3.0	0.0017	9.8
d12	Fukushima City Watari	North/West	61km	2011/4/27	2.9	0.0012	7.8
d8	Fukushima City Miyashita town	North/West	63km	2011/4/27	2.2	0.0014	7.8
d7	Fukushima City Sankyoue	North/West	63km	2011/4/27	2.4	0.0013	7.6
d10	Fukushima City Kamihama town	North/West	61km	2011/4/27	2.3	0.0013	7.6
d9	Fukushima City Shinhama town	North/West	62km	2011/4/27	1.7	0.0010	5.4
115	Iwaki city Kawamae town Shimookeuri	South/West	28km	2011/5/30	5.8	0.0028	16.7
174	Iwaki city Ogawa town Takahagi	South/South/West	36km	2011/5/23	0.2	0.0002	0.9
112	Futaba county Hirono town Kamiazamigawa	South/South/West	24km	2011/5/18	1.2	0.0006	3.5
177	Futaba county Kawauchi Village Shimokawauchi	South/West	25km	2011/5/23	2.2	0.0006	4.7
111	Futaba county Kawauchi Village Kamikawauchi	West/South/West	28km	2011/5/18	1.6	0.0006	4.0
181	Futaba county Kawauchi Village Kamikawauchi	West/South/West	25km	2011/5/20	1.2	0.0006	3.4
113	Tamura city Miyakoji town Iwaisawa	West	25km	2011/5/20	3.1	0.0013	8.4
110	Tamura city Miyakoji town Furumichi	West	25km	2011/5/18	2.8	0.0010	6.6

*8:The integrated dose from 6 o'clock on March 12 to 24 o'clock May 11. Radioactive decay by wooden houses ,assuming people stayed 16 hours in the houses, are taken into account

Readings at Monitoring car on June 13 are adopted for Location Number of d2, d3, d4 and d5 in Date City.

*9: The dose data for the period from March 17 to the day before the start of monitoring has been derived by assuming that the dose has changed in proportion to changes at Location No. 32, where the steepest dose change has been observed.

*10: Shown values have been obtained while supposing that the latest estimates (the average of estimates from June 9 to June 11) will stay unchanged on and after June 12.

*11: Information on the latitude and longitude of each monitoring spot is available on the MEXT website.

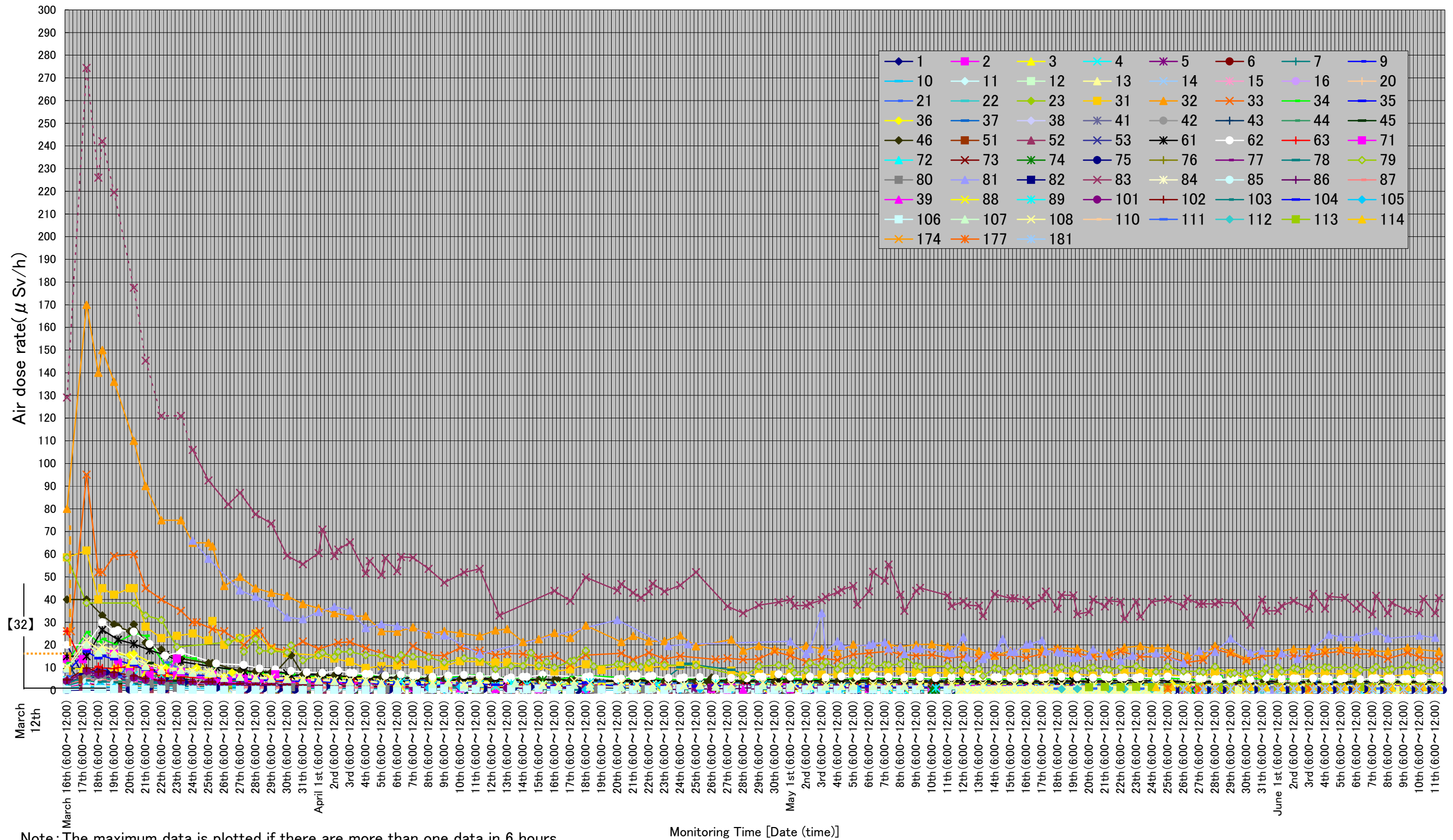
*12: Changed from former location no. 89

Continued on the next page

To prepare the isogram map of estimated integrated doses, the values for a total of 2,734 locations were used (the 160 locations mentioned above plus the air dose monitoring locations mentioned below [2,574 locations]).

- 1) Air dose rates observed in the emergency environmental monitoring conducted by Fukushima Prefecture from March 30 to June 11: 88 locations
- 2) Air dose rates observed in monitoring conducted by MEXT on April 9 in Katsurao Village and Namie Town: 16 locations
- 3) Air dose rates observed in monitoring conducted by MEXT on April 12 and April 14 in Iitate Village, Iwaki City, Katsurao Village, Kawauchi Village, Tamura City, Namie Town, Hirono Town, and Minamisoma City: 387 locations and Air dose rates observed in monitoring conducted by MEXT and other organizations on July 5, 6, 10, 13 and 14 in Date City and Minamisoma City: 387 locations
- 4) Air dose rates observed within the area covered by the isogram map in the grid survey conducted by Fukushima Prefecture from April 12 to April 16: 1,788 locations
- 5) Air dose rates observed within the area covered by the isogram map in the environmental radioactivity monitoring conducted by Fukushima Prefecture (municipalities and 7 regions in Fukushima)
- 6) Air dose rates observed inside the 20 km zone in monitoring conducted by MEXT and TEPCO on March 30 and 31, and April 2, 18 and 19, May 6, 13, 20 and 27 and June 3 and 10 : 228
- 7) Air dose rates continuously monitored from April 12 at monitoring posts 1 to 8 near the border of the site of Fukushima Dai-ichi NPP: 8 locations

Readings at Air dose rate



Note: The maximum data is plotted if there are more than one data in 6 hours.

The dotted part does not show measured values but estimated values presuming that they are proportional to the values at location 32.

《 日常生活と放射線 》



※ Sv【シーベルト】=放射線の種類による生物効果の定数(※) × Gy【グレイ】

※ X線、γ線では 1

Radiation in Daily-life

※Unit : μSv



※ Sv [Sievert] = Constant of organism effect by kind of radiation (※) × Gy [gray]

※ It is 1 in case of X ray and γ ray.