

## Readings of integrated Dose at Monitoring Post out of 20 Km Zone of Fukushima Dai-ichi NPP

As of 10:00 April 17, 2011  
Ministry of Education, Culture, Sports, Science and Technology (MEXT)

\* 1 the readings are measured by pocket dosimeter

Monitoring Post (length from NPP)	Installation Date and Time	Date and Time (last monitoring) (x)	Readings (last monitoring) (a) ( $\mu$ Sv)	Monitoring Date and Time (y)	Reading of Integrated Dose (b) ( $\mu$ Sv)	Accumulated Time (z = y - x)	Reading of integrated Dose (c = b - a) ( $\mu$ Sv)	Weather
Monitoring Area [31] Futaba county Namie town Tsushima Nakaoki (About30kmWest/North/West)	2011/3/23 11:43	2011/4/15 10:44	7498 **	2011/4/16 9:59	7693 **	23hour15minutes	195 (8.4 $\mu$ Sv/h)	No Rain
Monitoring Area [32] Futaba county Namie town Akougi Teshichiro (About30kmNorth/West)	2011/3/23 12:14	2011/4/15 10:24	17010 **	-	-	-	-	-
Monitoring Area [33] Soma county litate village Nagadoro (About30kmNorth/West)	2011/3/23 12:32	2011/4/15 10:06	9850 **	2011/4/16 10:31	10120 **	24hour25minutes	270 (11.1 $\mu$ Sv/h)	No Rain
Monitoring Area [34] Futaba county Namie town Tsushima Taikougi (About30kmNorth/West)	2011/3/23 13:08	2011/4/15 11:20	3568 **	2011/4/16 11:28	3673 **	24hour08minutes	105 (4.4 $\mu$ Sv/h)	No Rain
Monitoring Area [38] Iwaki City Yotsukura town Shiraiwa Hokita (About35kmSouth)	2011/3/31 16:23	2011/4/15 13:38	291 **	2011/4/16 13:10	300 **	23hour32minutes	9 (0.4 $\mu$ Sv/h)	Rain
Monitoring Area [71] Futaba county Hirono town Shimokitaba Nawashirogae (About25kmSouth)	2011/3/23 13:00	2011/4/15 14:24	763 **	2011/4/16 14:00	777 **	23hour36minutes	14 (0.6 $\mu$ Sv/h)	No Rain
Monitoring Area [79] Futaba county Namie town shimotsushima kayabuka (About30kmNorth/West)	2011/3/23 14:09	2011/4/15 11:00	8122 **	2011/4/16 11:00	8368 **	24hour00minutes	246 (10.3 $\mu$ Sv/h)	No Rain
Monitoring Area [7] Minami Soma city Kashima ward Terauchi Motoyashiki (About35kmNorth)	2011/3/23 12:06	2011/4/15 11:49	495 **	2011/4/16 11:28	509 **	23hour39minutes	14 (0.6 $\mu$ Sv/h)	No Rain
Monitoring Area [1] Fukushima city Sugitsuma town (About60kmNorth/West)	2011/3/24 15:20	2011/4/15 15:55	596 **	2011/4/16 15:05	614 **	23hour10minutes	18 (0.8 $\mu$ Sv/h)	No Rain
Monitoring Area [15] Tamura city Tokiwa town Yamane Kashima (About35kmWest)	2011/3/24 10:58	2011/4/15 11:41	822 **	2011/4/16 11:38	848 **	23hour57minutes	26 (1.1 $\mu$ Sv/h)	No Rain
Monitoring Area [84] Iwaki city Miawa-town Saiso (About40kmSouth/West)	2011/3/25 10:40	2011/4/15 10:12	110 **	2011/4/16 10:30	115 **	24hour18minutes	5 (0.2 $\mu$ Sv/h)	No Rain
Monitoring Area [39] Soma city Yamakami Kaminamiki (About45kmNorth)	2011/4/1 10:45	2011/4/15 10:44	238 **	2011/4/16 10:24	253 **	23hour40minutes	15 (0.6 $\mu$ Sv/h)	No Rain
Monitoring Area [76] Futaba county Kawauchi village Kamikawauchi Hayawata (About20kmSouth/West)	2011/4/2 11:35	2011/4/15 10:51	158 **	2011/4/16 10:41	168 **	23hour50minutes	10 (0.4 $\mu$ Sv/h)	No Rain
Monitoring Area [80] Minami Soma city Haramachi ward Takami town (About25kmNorth)	2011/4/3 11:56	2011/4/15 12:41	162 **	2011/4/16 11:55	174 **	23hour14minutes	12 (0.5 $\mu$ Sv/h)	No Rain
Monitoring Area [21] Futaba County Katsurao Village Kaminogawa (About30kmWest/North/West)	2011/4/8 13:18	2011/4/15 12:04	584 **	2011/4/16 12:00	665 **	23hour56minutes	81 (3.4 $\mu$ Sv/h)	No Rain

notes: The parenthesis figures in the column "Integrated Dose" indicates the values of readings of integrated dose divided by accumulated time (c/z).

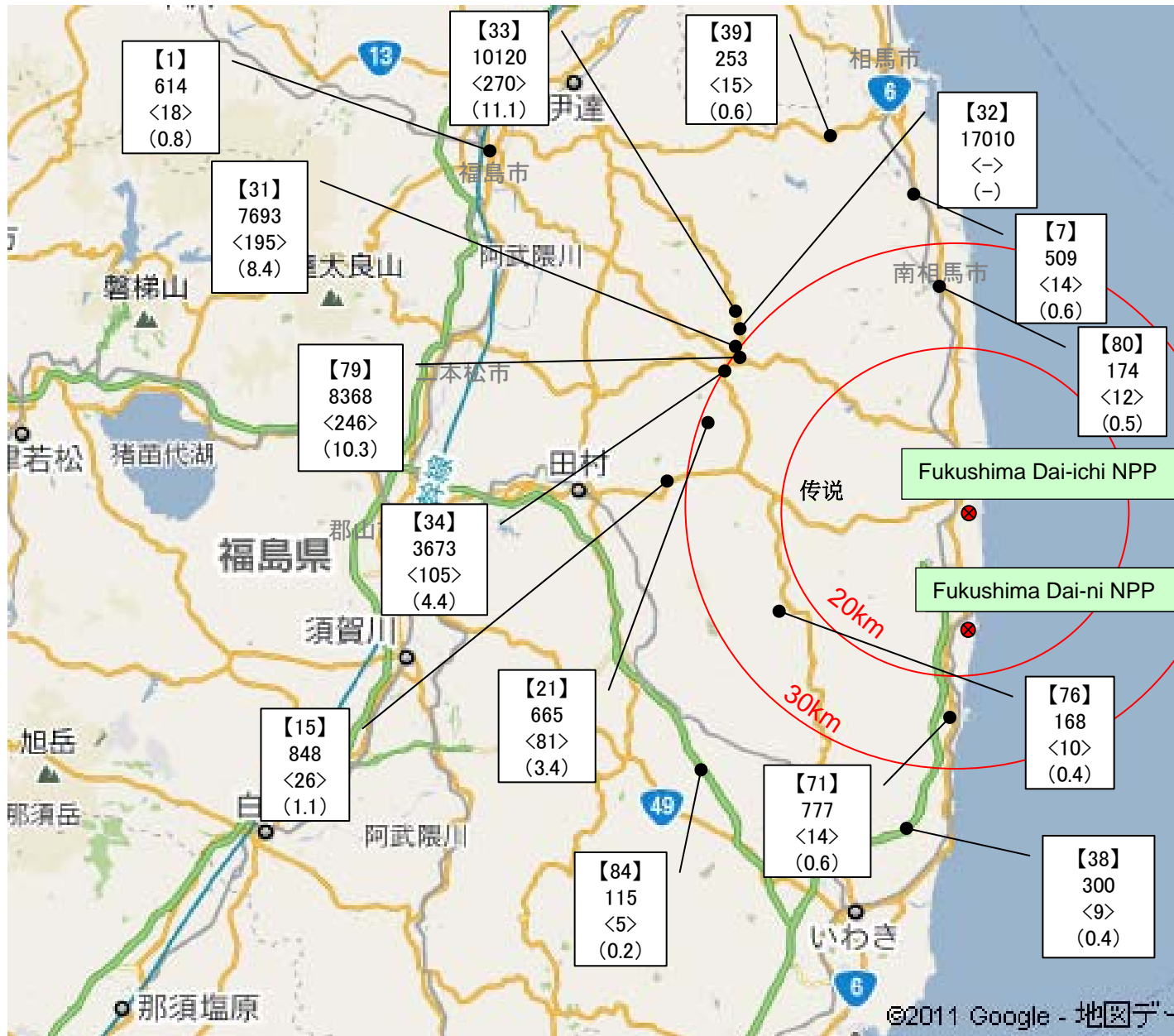
· Reading by MEXT

· The figures of 0.0 in the column "Date and Time (last monitoring)" indicate that there was new installation in the area.

About estimate of integrated Dose at Monitoring Post out of 20 Km Zone of Fukushima Dai-ichi NPP from 6 o'clock March 12 to 24 o'clock April 5, please refer to No.1-2 of material of Nuclear Safety Commission the 22nd Special meeting held on April 10, 2011

· Reading of [32] on April 16th is to be measured on the day after 17th, since the battery run down.

# Readings of Integrated Dose at Monitoring Post out of Fukushima Dai-ichi NPP



- ### Monitoring Time
- March 23th~April 16th (Monitoring Post: 31, 33, 34)
  - March 23th~April 15th (Monitoring Post: 32)
  - March 23th~April 13th, April 15th ~16th (Monitoring Post: 7)
  - March 23th~April 11th, April 14th ~16th (Monitoring Post: 79)
  - March 23th~28th, April 3rd ~16th (Monitoring Post: 71)
  - March 24th~April 16th (Monitoring Post: 1)
  - March 24th~April 11th, April 13th ~16th (Monitoring Post: 15)
  - March 25th~April 1st, April 3rd ~16th (Monitoring Post: 84)
  - March 31th~ April 1st, April 3rd ~16th (Monitoring Post: 38)
  - April 1st~April 13th, April 16th (Monitoring Post: 39)
  - April 2nd~April 11th, April 13th ~16th (Monitoring Post: 76)
  - April 3rd~April 13th, April 15th ~16th (Monitoring Post: 80)
  - April 8th~April 12th, April 3rd ~16th (Monitoring Post: 21)
- Monitoring Post

(explanatory note)

【 Monitoring Post number】  
 Readings of Integrated Dose ※  
 <increment from the last monitoring>  
 (average dose per hour)

※Readings of Integrated Dose indicate that accumulation of dose from each starting date till April 16th, for 9 days to 24 days.

Unit:  $\mu$  Sv per hour

# Radiation in Daily-life

※Unit :  $\mu\text{Sv}$



※  $\text{Sv}$  [Sievert] = Constant of organism effect by kind of radiation (※)  $\times$  Gy [gray]

※ It is 1 in case of X ray and  $\gamma$  ray.