

Readings of integrated Dose at Monitoring Post out of 20 Km Zone of Fukushima Dai-ichi NPP

As of 10:00 April 12, 2011
Ministry of Education, Culture, Sports, Science and Technology (MEXT)

* 1 the readings are measured by pocket dosimeter

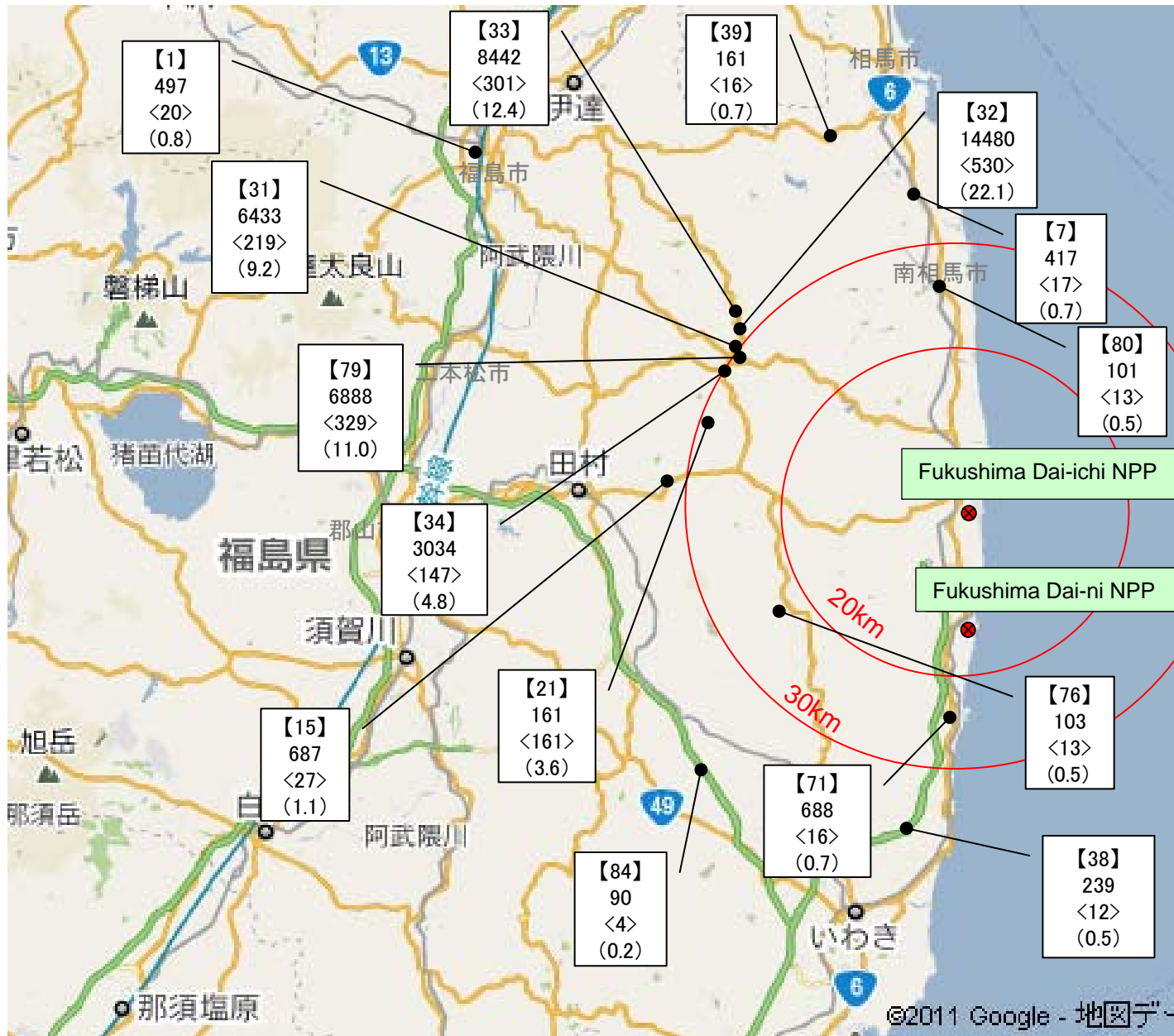
Monitoring Post (length from NPP)	Installation Date and Time	Date and Time (last monitoring) (x)	Readings (last monitoring) (a) (μ Sv)	Monitoring Date and Time (y)	Reading of Integrated Dose (b) (μ Sv)	Accumulated Time ($z = y - x$)	Reading of integrated Dose ($c = b - a$) (μ Sv)	Weather
Monitoring Post [31] Futaba county Namie town Tsushima Nakaaki (About30kmWest/North/West)	2011/3/23 11:43	2011/4/10 10:10	6214 ^{**1}	2011/4/11 13:30	6433 ^{**1}	27hour20minutes	219 (8.0 μ Sv/h)	No Rain
Monitoring Post [32] Futaba county Namie town Akougi Teshichiro (About30kmNorth/West)	2011/3/23 12:14	2011/4/10 10:47	13950 ^{**1}	2011/4/11 13:50	14480 ^{**1}	27hour03minutes	530 (19.6 μ Sv/h)	No Rain
Monitoring Post [33] Soma county litate village Nagadoro (About30kmNorth/West)	2011/3/23 12:32	2011/4/10 11:10	8141 ^{**1}	2011/4/11 14:04	8442 ^{**1}	26hour54minutes	301 (11.2 μ Sv/h)	No Rain
Monitoring Post [34] Futaba county Namie town Tsushima Taikougi (About30kmNorth/West)	2011/3/23 13:08	2011/4/10 16:14	2887 ^{**1}	2011/4/11 15:06	3034 ^{**1}	22hour52minutes	147 (6.4 μ Sv/h)	No Rain
Monitoring Post [38] Iwaki City Yotsukura town Shiraiwa Hokita (About35kmSouth)	2011/3/31 16:23	2011/4/10 11:20	227 ^{**1}	2011/4/11 11:23	239 ^{**1}	24hour03minutes	12 (0.5 μ Sv/h)	No Rain
Monitoring Post [71] Futaba county Hirono town Shimokitaba Nawashirogae (About25kmSouth)	2011/3/23 13:00	2011/4/10 12:23	672 ^{**1}	2011/4/11 12:05	688 ^{**1}	23hour42minutes	16 (0.7 μ Sv/h)	No Rain
Monitoring Post [79] Futaba county Namie town shimotsushima kayabuka (About30kmNorth/West)	2011/3/23 14:09	2011/4/10 16:20	6559 ^{**1}	2011/4/11 14:58	6888 ^{**1}	22hour38minutes	329 (14.5 μ Sv/h)	No Rain
Monitoring Post [7] Minami Soma city Kashima ward Terauchi Motoyashiki (About35kmNorth)	2011/3/23 12:06	2011/4/10 10:58	400 ^{**1}	2011/4/11 10:56	417 ^{**1}	23hour58minutes	17 (0.7 μ Sv/h)	No Rain
Monitoring Post [1] Fukushima city Sugitsuma town (About60kmNorth/West)	2011/3/24 15:20	2011/4/10 14:39	477 ^{**1}	2011/4/11 14:58	497 ^{**1}	24hour19minutes	20 (0.8 μ Sv/h)	No Rain
Monitoring Post [15] Tamura city Tokiwa town Yamane Kashima (About35kmWest)	2011/3/24 10:58	2011/4/10 11:42	660 ^{**1}	2011/4/11 11:19	687 ^{**1}	23hour37minutes	27.0 (1.1 μ Sv/h)	No Rain
Monitoring Post [84] Iwaki city Miawa-town Saiso (About40kmSouth/West)	2011/3/25 10:40	2011/4/10 9:55	86 ^{**1}	2011/4/11 10:10	90 ^{**1}	24hour15minutes	4 (0.2 μ Sv/h)	No Rain
Monitoring Post [39] Soma city Yamakami Kaminamiki (About45kmNorth)	2011/4/1 10:45	2011/4/10 10:07	145 ^{**1}	2011/4/11 10:10	161 ^{**1}	24hour03minutes	16 (0.7 μ Sv/h)	No Rain
Monitoring Post [70] Futaba county Kawauchi village Kamikawauchi Haramachi (About20kmSouth/West)	2011/4/2 11:35	2011/4/10 12:19	90 ^{**1}	2011/4/11 10:38	103 ^{**1}	22hour19minutes	13 (0.6 μ Sv/h)	No Rain
Monitoring Post [100] Minami Soma city Haramachi ward Takami (About25kmNorth)	2011/4/3 11:56	2011/4/10 11:26	88 ^{**1}	2011/4/11 11:27	101 ^{**1}	24hour01minutes	13 (0.5 μ Sv/h)	No Rain
Monitoring Post [121] Futaba County Katsurao Village Kaminogawa (About30kmWest/North/West)	2011/4/8 13:18	2011/4/10 10:24	0 ^{**1}	2011/4/11 12:54	161 ^{**1}	26hour30minutes	161 (6.1 μ Sv/h)	No Rain

notes: The parenthetic figures in the column "Integrated Dose" indicates the values of readings of integrated dose divided by accumulated time (z/c).

· Reading by MEXT

· The figures of 0.0 in the column "Date and Time (last monitoring)" indicate that there was new installation in the area.

Readings of Integrated Dose at Monitoring Post out of Fukushima Dai-ichi NPP



- ### Monitoring Time
- March 23th~April 10th
(Monitoring Post: 7, 31~34, 79)
 - March 23th~28th, April 3rd ~10th
(Monitoring Post: 71)
 - March 24th~April 10th
(Monitoring Post: 1, 15)
 - March 25th~April 1st, April 3rd ~10th
(Monitoring Post: 84)
 - March 31th~ April 1st, April 3rd ~10th
(Monitoring Post: 38)
 - April 1st~April 10th
(Monitoring Post: 39)
 - April 2nd~April 10th
(Monitoring Post: 76)
 - April 3rd~April 10th
(Monitoring Post: 80)
 - April 8th~April 10th
(Monitoring Post: 21)
- Monitoring Post

(explanatory note)

【 Monitoring Post number】
 Readings of Integrated Dose ※
 <increment from the last monitoring>
 (average dose per hour)

Readings of Integrated Dose indicate that accumulation of dose from each starting date till April 10th, for 2 days to 18 days.

Unit: μ Sv per hour

Radiation in Daily-life

※Unit : μSv



※ Sv [Sievert] = Constant of organism effect by kind of radiation (※) \times Gy [gray]

※ It is 1 in case of X ray and γ ray.