

May 7, 2011

Ministry of Education, Culture, Sports, Science and Technology

On May 5, 2011, the Japan Coast Guard collected seawater by using of “Kaiyo” at 5 locations of offshore of Ibaraki Prefecture (refer to the attached map). Radioactive nuclides of this seawater were analyzed by The Tokyo Electric Power Company, Inc. The results are as follows.

Results of analysis of radioactive concentrations in seawater of offshore of Ibaraki Prefecture (sampling date May 5)

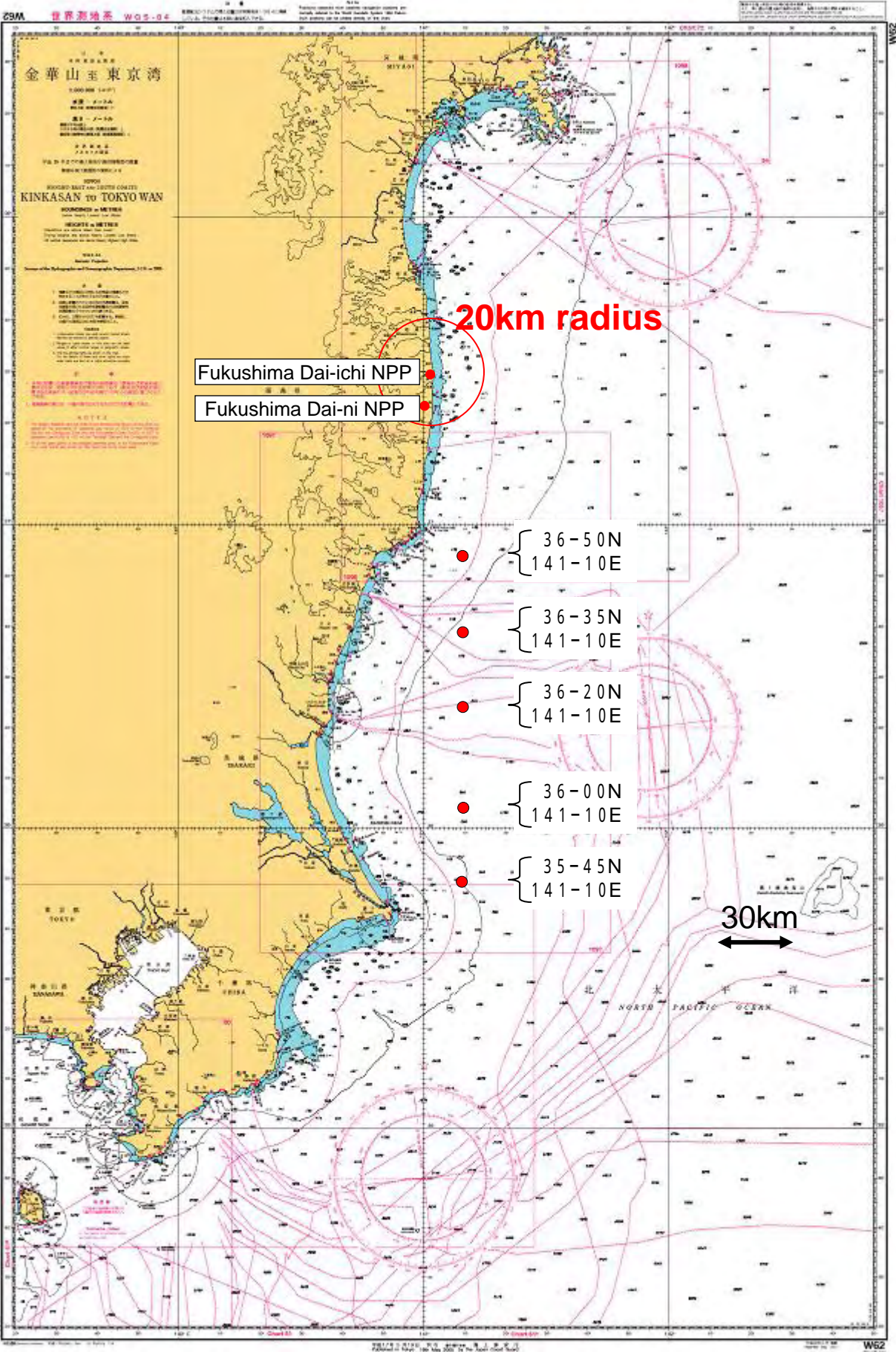
Water collection point	Water collection time	Radioactive Concentration (Bq/ℓ)								
		Outer layer			Middle layer			Lower layer		
		I-131	Cs-134	Cs-137	I-131	Cs-134	Cs-137	I-131	Cs-134	Cs-137
	8:06	Not detected	Not detected	Not detected	Not detected	Not detected	Not detected	Not detected	Not detected	Not detected
	10:29	Not detected	Not detected	Not detected	Not detected	Not detected	Not detected	Not detected	Not detected	Not detected
	13:08	Not detected	Not detected	Not detected	Not detected	Not detected	Not detected	Not detected	Not detected	Not detected
	15:00	Not detected	Not detected	Not detected	Not detected	Not detected	Not detected	Not detected	Not detected	Not detected
	16:51	Not detected	Not detected	Not detected	Not detected	Not detected	Not detected	Not detected	Not detected	Not detected

\*The detection limit values of this analysis are: about 6 Bq/ℓ for I - 131, about 14 Bq/ℓ for Cs - 134, about 14 Bq/ℓ for Cs - 137.

“Not detected” means the analysis value is lower than detection limit.

Water collection depth of each water collection point

Water collection point	Middle layer water collection depth	Lower layer water collection depth
	57m	143m
	268m	561m
	379m	792m
	200m	421m
	53m	130m



金華山至東京湾

KINKASAN TO TOKYO WAN

SOUNDINGS IN METERS

HEIGHTS IN METERS

Scale 1:50,000

Hydrographic Department, Ministry of Defense, Japan

Fukushima Dai-ichi NPP

Fukushima Dai-ni NPP

20km radius

36-50N  
141-10E

36-35N  
141-10E

36-20N  
141-10E

36-00N  
141-10E

35-45N  
141-10E

30km

NORTH PACIFIC OCEAN