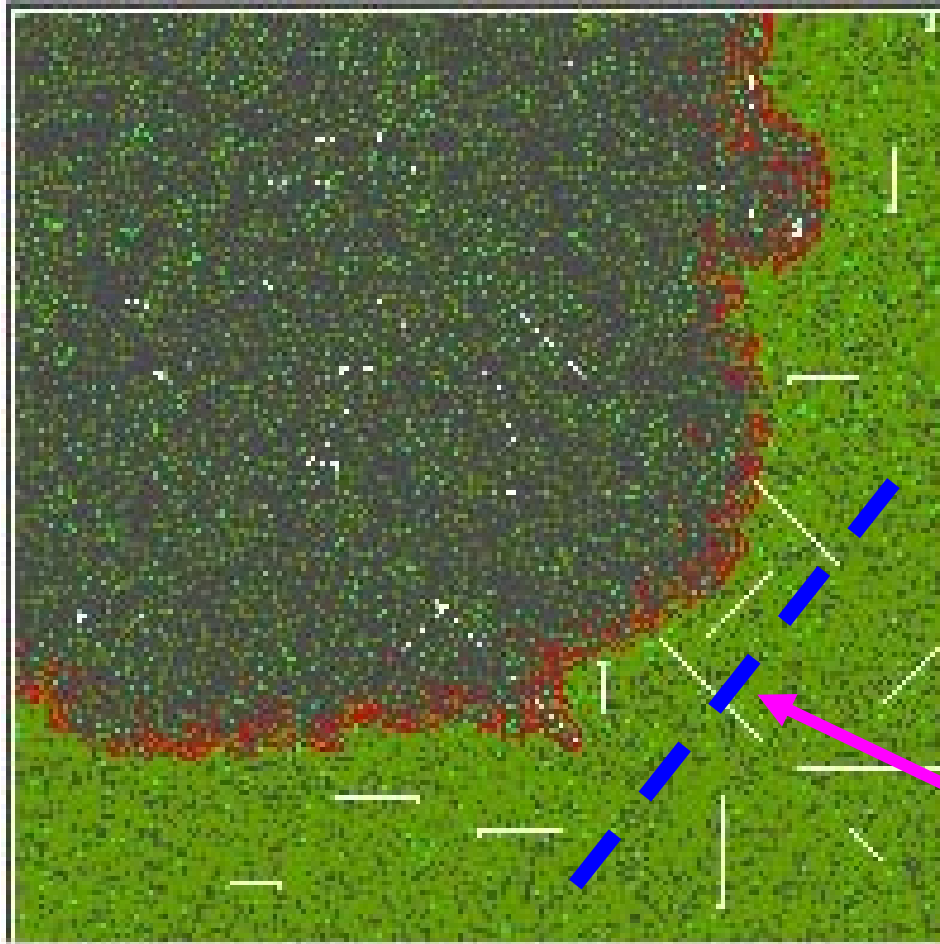


# 火災延焼予測

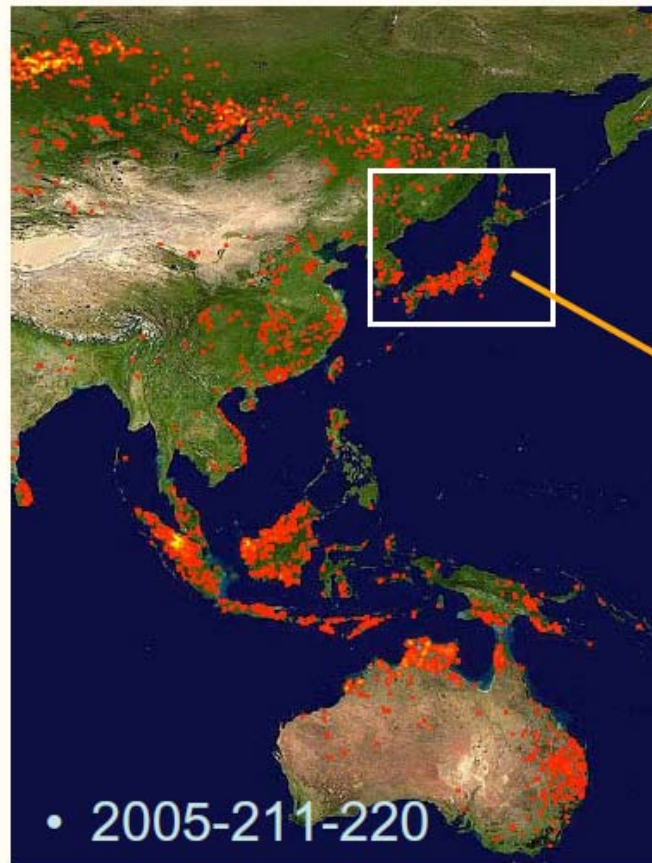


# 効果的な消火活動



# 火災検知アルゴリズム検証の必要性

- ・ 現行のアルゴリズム (MOD 14) は NASA が開発
- ・ 誤動作が発生する



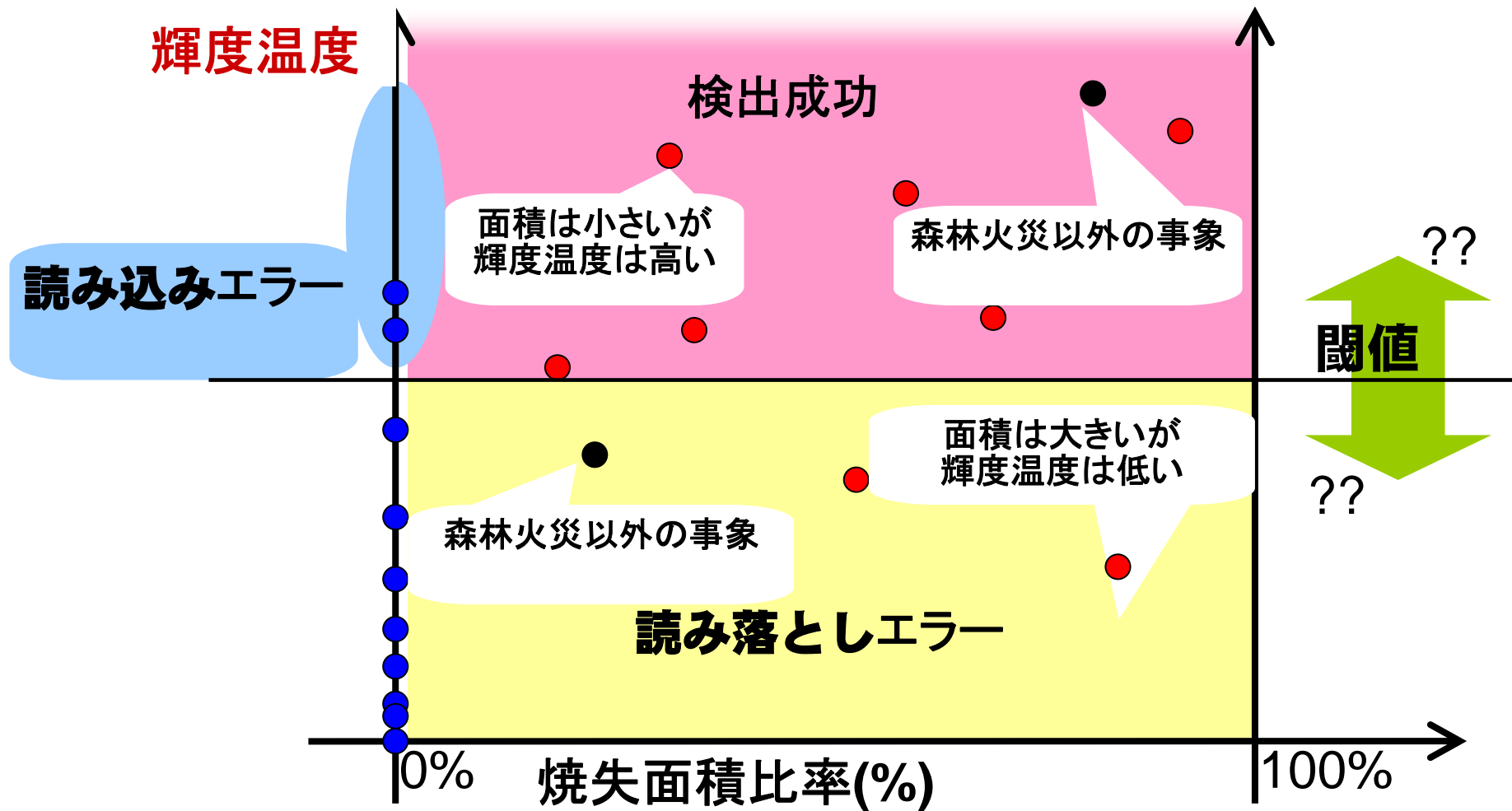
※ Hot Spot  
(Fire) Detection  
Algorithm

Overestimation



Japan  
is not  
a fire country

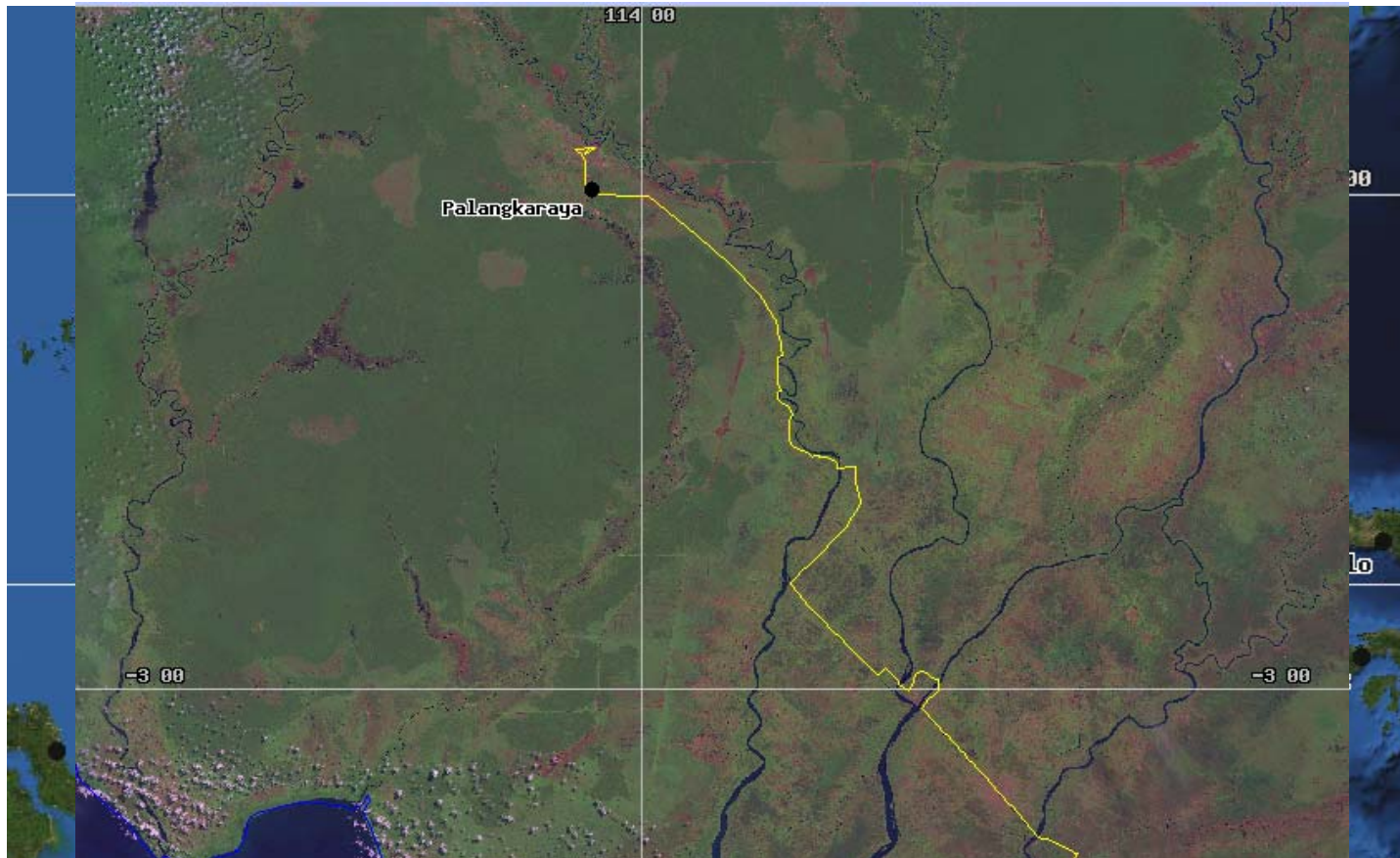
NASA MOD 14



## 森林火災の燃焼面積と輝度温度の関係

- ・アルゴリズム上は、一定の輝度温度以上を検出

# 対象地域

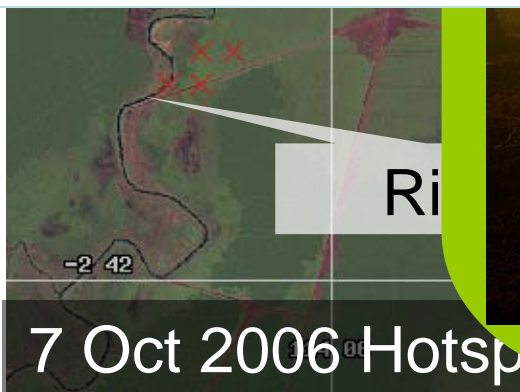


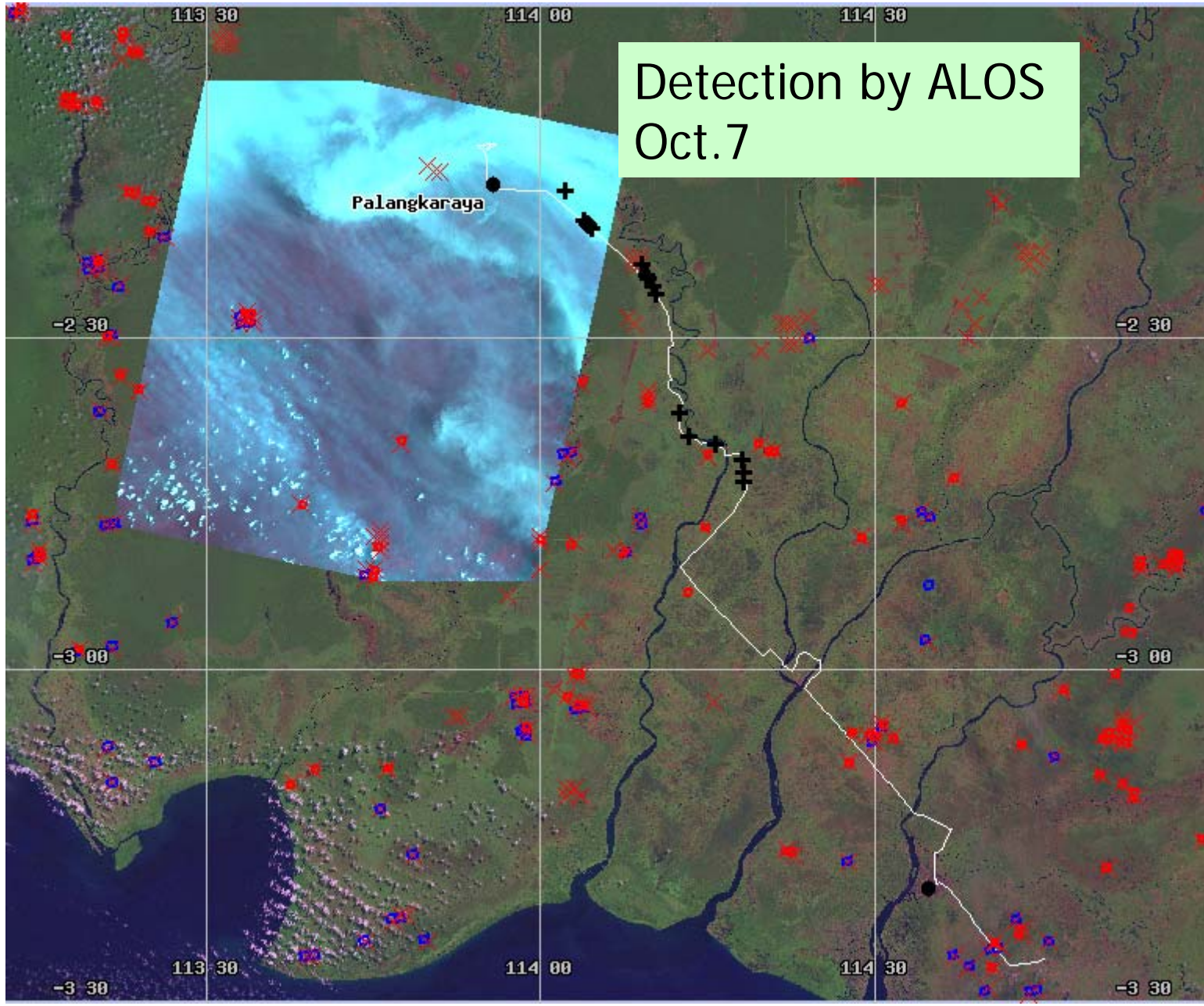
Location: 113.2E – 115.0E, 3.5S – 2.0S

Keyword: Peat land, Mega rice project and Fire to open firm land.



- X Hotspot detected by CRISP
- X Hotspot detected by LAPAN
- X Hotspot detected by AIT
- + Ground Obs. by Univ. Palangka Raya





Detection by ALOS  
Oct.7

Palangkaraya