

アルファベットの文字の認識・音の認識

A a



apple

B b



bear

C c



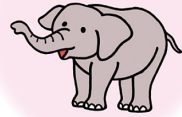
cat

D d



dog

E e



elephant

F f



fan

G g



goat

H h



hat

I i



ink

J j



jam

K k



king

L l



lion

M m



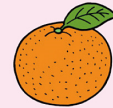
milk

N n



net

O o



orange

P p



pen

Q q



queen

R r



racket

S s



sun

T t



ten

U u



up

V v



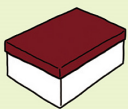
vest

W w



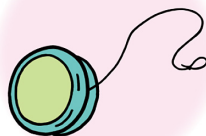
watch

X x



box

Y y



yo-yo

Z z



zebra



アルファベットの文字の認識・音の認識

A a



apple

B b



banana

C c



corn

D d



donut

E e



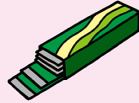
egg

F f



fish

G g



gum

H h



hot dog

I i



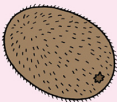
It's nice!

J j



jam

K k



kiwi fruit

L l



lemon

M m



melon

N n



namul

O o



omelet

P p



pizza

Q q



queen's lunch

R r



rice

S s



salad

T t



tea

U u



cup cake

V v



Very good!

W w



watermelon

X x



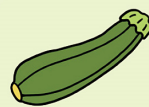
lunch box

Y y



Yummy.

Z z



zucchini

