



Kanazawa University (Ishikawa)



Theoretical and Practical Approaches to Educational Issues at School

◇ University overview

【Characteristics and history】

Kanazawa University is located in Kanazawa, a city with the traditional Japanese culture in people's daily life. It consists of 3 colleges of "Human and Social Sciences", "Science and Engineering" and "Medical, Pharmaceutical and Health Sciences", 5 graduate schools and organizations such as the Cancer Research Institute, the University Libraries, the University Hospital. The School of Teacher Education in the College of Human and Social Sciences consists of 2 courses and the Graduate School of Education consists of 3 courses. The Kakuma Campus, as the main campus of the university, offers the students opportunities to participate in a variety of activities together with students from other schools. It also boasts its surrounding nature which lets the students learn while feeling the transition of the beautiful four seasons.

The school has an attached kindergarten, elementary school, junior high school, high school and school for mentally retarded children.

【Number of Students】(As of May 1, 2010)

Undergraduates: 7,982 Graduates: 2,423
 (Undergraduates in the School of Teacher Education and the Faculty of Education: 566
 (Graduates in the Graduate School of Education: 56)

【International Exchange】(As of May 1, 2010)

Kanazawa University has concluded the General Agreement for academic exchange and cooperation With 133 Universities from 28 countries and a region. 491 students who come from 41 countries and 1 regions are studying at the University. Among them, 11 overseas students are studying in the Faculty of Education and the Graduate School of Education.

•Number of Students Having Completed The Program (In the last three years)
 Academic year 2008: 4 Academic year 2009: 1
 Academic year 2010: 0

◇ Outline of the course in brief:

【Characteristics】Our graduate school of education has an advanced educational research and development course specializing in fostering teachers at a higher level. In principle, applicants are required to obtain teaching certification at the time of graduation from university. This Course consists of the three following divisions: 1. Division of Clinical Education, which focuses on practical approaches to issues pertaining to school education. 2. Division of Curriculum Development, which focuses on specialized knowledge and skills pertaining to curriculum contents. 3. Division of Special Needs Education, which focuses on education for students with special needs. Each division intends to develop teachers who will cope effectively with educational issues at school, both theoretically and pragmatically.

【Number of students to be accepted】 10 students.

【Preparatory Japanese language education】 Oct. 2011–Mar. 2012 Students study Japanese 25h/week for 17 weeks in the basic Japanese training course at International Student Center, Kanazawa University. The course provides the students with intensive training to master basic, proper and correct Japanese usage. Students are able to continue studying Japanese after the basic course. Primary, intermediate and advanced classes will be offered according to the student's ability.

【Academic Training】 Apr. 2012– Mar. 2013

a) Course, type of teaching, etc.:

- Each student will be assigned an academic advisor and a tutor. They will offer him/her appropriate assistance in his/her academic and daily life. Especially, the academic advisor will help the student to plan his/her whole study according to his/her speciality. Students are encouraged to take lectures and seminars offered by the undergraduate and postgraduate courses.
- There are a number of licensed teachers who as part of their further training study in the undergraduate as well as the graduate courses in the School of Teacher Education. Therefore, the students in the Teacher-Training Program can expect to have the opportunity to exchange information with them on various topics of their interest.
- Students can also learn advanced methods in education which utilize computers and various audio visual equipments in the School for Educational Research and Training.

b) Subjects or courses taught in English, if any English is not used except in the Department of English, but professors who have a command of English may use it as a supplementary instructional language

◇ Accommodations

Students live in Kanazawa University International House while the students are Intensive Japanese Language Program Students. Residence Assistants who are Japanese students of Kanazawa University always support your stay.

【Outline of the International House】

• Number of rooms : 67 single rooms (14.03m²)

• Monthly rent : 7,700yen

• Facilities:

Rooms : Refrigerator, Shower & Toilet, Vacuum cleaner, Desk, Chairs, Wardrobe, Bed, etc.
 Coin-operated Laundry Rooms : Every floor
 Shower Rooms (coin-operated) : Men's (2nd floor), Women's (3rd floor)

• Kanazawa University International House on the Kakuma campus is within a few-minute walk to the School of Teacher Education. There are a convenience store and a shopping center nearby.

After completion of the program, if the student prefers, the student can live together with Japanese students in student dormitories (two dormitories for male students, and one for female students). If the student prefers to live in a private apartment or boarding house, the tutor will help the students with the procedure.

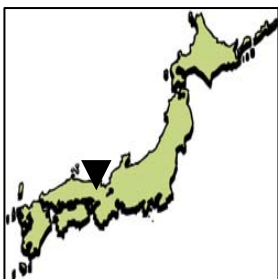
◇ Inquiries

International Student Section, Student Affairs Div.
 Address: Kakuma-machi, Kanazawa 920-1192, Japan
 TEL : +81-76-264-5190
 FAX : +81-76-234-4043
 E-MAIL: ryukou@adm.kanazawa-u.ac.jp
 Web : <http://www.kanazawa-u.ac.jp/index.html>
 syllabus: 【Preparatory Japanese language education】
<http://isc.ge.kanazawa-u.ac.jp/>

Graduate School of Education							
Name of Adviser		Adviser's E-mail Address	Teaching Field(s)	Course of Study	Number & Nationality to the Students Having Completed the Program (in the last five years)	Number of Students to Be Accepted	Qualifications and Requirements
Professor	MATSUSHITA Ryohei	matsuryo@ed.kanazawa-u.ac.jp	Clinical Education	Philosophy and Ethics of Education		10	In order to perform research and educational activities at elementary and junior high schools, applicants are required to have a basic knowledge of school education and the ability to communicate in Japanese or English.
Professor	IKEGAMI Kimiko	ikegamik@ed.kanazawa-u.ac.jp	Clinical Education	Developmental Psychology			
Professor	YAEZAWA Michiko	yaezawa@kenroku.kanazawa-u.ac.jp	Clinical Education	School Psychology			
Professor	KAYAHARA Michiharu	kayahara@ed.kanazawa-u.ac.jp	Clinical Education	Lecture on Counseling			
Professor	TANABE Shunji	tanabe@ed.kanazawa-u.ac.jp	Clinical Education	School Management	1 Chinese		
Professor	MOROOKA Kosai	morooka@ed.kanazawa-u.ac.jp	Clinical Education	Theory of Teaching			
Professor	ASANO Hideshige	asano@ad.kanazawa-u.ac.jp	Clinical Education	Lifelong Learning			
Assoc. Professor	SUGITA Mai	sugitam@staff.kanazawa-u.ac.jp	Clinical Education	Guidance			
Assoc. Professor	TORII Kazuyo	torika@ed.kanazawa-u.ac.jp	Clinical Education	History of Education			
Assoc. Professor	KAWATA Hitomi	kawata.h@staff.kanazawa-u.ac.jp	Clinical Education	Health Education			
Assoc. Professor	KATO Takahiro	kato@ed.kanazawa-u.ac.jp	Clinical Education	Educational Technology and ICT Education			
Assoc. Professor	DOI Taeko	tdoi@ed.kanazawa-u.ac.jp	Clinical Education	Curriculum Studies	1 Mongolian		
Assoc. Professor	MATSUDA Yosuke	ymatsuda@staff.kanazawa-u.ac.jp	Clinical Education	Education Sociology			
Instructor	HARADA Katsumi	katsumi@ed.kanazawa-u.ac.jp	Clinical Education	School Counseling and Guidance			
Professor	KATO Kazuo	kkatoh@ed.kanazawa-u.ac.jp	Curriculum Development	Japanese Linguistics			
Professor	KONDO Akira	akondoh@ed.kanazawa-u.ac.jp	Curriculum Development	Japanese Linguistics			
Professor	MAEDA Hisanori	maeda@ed.kanazawa-u.ac.jp	Curriculum Development	Japanese Literature			
Professor	YAMAMOTO Hajime	hajimeym@ed.kanazawa-u.ac.jp	Curriculum Development	Japanese Literature			
Professor	YABUCHI Takayoshi	yabuchi@sgkit.ge.kanazawa-u.ac.jp	Curriculum Development	Literature written in kanji			
Assoc. Professor	ORIKAWA Tsukasa	orikawa@ed.kanazawa-u.ac.jp	Curriculum Development	Teaching of Japanese			

Name of Adviser		Adviser's E-mail Address	Teaching Field(s)	Course of Study	Number & Nationality to the Students Having Completed the Program (in the last five years)	Number of Students to Be Accepted	Qualifications and Requirements
Professor	MURAI Atsushi	murai@ed.kanazawa-u.ac.jp	Curriculum Development	Method of Teaching on Social Studies			
Assoc. Professor	ISHIGURO Morihisa	ishiguro@ed.kanazawa-u.ac.jp	Curriculum Development	History			
Assoc. Professor	KURODA Satoshi	kurosato@staff.kanazawa-u.ac.jp	Curriculum Development	Japanese History			
Assoc. Professor	MATSUSHITA Shigeo	matsu@staff.kanazawa-u.ac.jp	Curriculum Development	Urban Sociology			
Professor	OHTANI Minoru	mohtani@kenroku.kanazawa-u.ac.jp	Curriculum Development	Mathematics Education	1 Myanmar		
Professor	YAMASHITA Hiroshi	yamashita@ed.kanazawa-u.ac.jp	Curriculum Development	Algebra			
Assoc. Professor	MATSUMOTO Shin-ichiro	matsugen@ed.kanazawa-u.ac.jp	Curriculum Development	Mathematics Education			
Assoc. Professor	MATSUMOTO Toyoji	matumoto@wave.ipc.kanazawa-u.ac.jp	Curriculum Development	Computer Education			
Assoc. Professor	SATO Shuichi	shuichi@kenroku.kanazawa-u.ac.jp	Curriculum Development	Harmonic Analysis			
Assoc. Professor	HASEGAWA Kazuyuki	kazuhasse@staff.kanazawa-u.ac.jp	Curriculum Development	Geometry			
Instructor	ITOH Shinya	itoh@staff.kanazawa-u.ac.jp	Curriculum Development	Mathematics Education			
Professor	MATSUBARA Michio	mmatsu@kenroku.kanazawa-u.ac.jp	Curriculum Development	Science Education	1 Mongolian		
Professor	IHARA Yoshinori	ihara@ed.kanazawa-u.ac.jp	Curriculum Development	Chemistry			
Professor	YAKURA Kimitaka	yakura@ed.kanazawa-u.ac.jp	Curriculum Development	Biology			
Professor	KAWABATA Keiichi	kawabata@ed.kanazawa-u.ac.jp	Curriculum Development	Biology	1 Philippine		
Professor	SAKAYORI Atsushi	sakayori@ed.kanazawa-u.ac.jp	Curriculum Development	Earth Sciences			
Assoc. Professor	TSUJII Hiroyuki	htsujii@kenroku.kanazawa-u.ac.jp	Curriculum Development	Physics			
Professor	SHINOHARA Hideo	hshino@ed.kanazawa-u.ac.jp	Curriculum Development	Music Education			
Professor	ONO Ryuta	dragon@kenroku.kanazawa-u.ac.jp	Curriculum Development	Instrumental Music (Piano)			
Assoc. Professor	ANDO Jyoko	joko-an6@ed.kanazawa-u.ac.jp	Curriculum Development	Vocal Music			
Assoc. Professor	ASAI Akiko	akikoasai@ed.kanazawa-u.ac.jp	Curriculum Development	Composition and Conducting			
Professor	WASHIYAMA Yasushi	washi@ed.kanazawa-u.ac.jp	Curriculum Development	Art Education			
Professor	OMURA Masaaki	moomura@ed.kanazawa-u.ac.jp	Curriculum Development	Painting			
Professor	MATSUURA Noboru	matsuura@ed.kanazawa-u.ac.jp	Curriculum Development	Construction(Design・Craft)			
Professor	MIYASHITA Takaharu	miyasita@ed.kanazawa-u.ac.jp	Curriculum Development	Plastic Arts			
Assoc. Professor	ETO Nozomu	etoh@ed.kanazawa-u.ac.jp	Curriculum Development	Sculpture			

Name of Adviser		Adviser's E-mail Address	Teaching Field(s)	Course of Study	Number & Nationality to the Students Having Completed the Program (in the last five years)	Number of Students to Be Accepted	Qualifications and Requirements
Professor	OKUBO Hideaki	okubo@ed.kanazawa-u.ac.jp	Curriculum Development	History of Sport and Physical Education			
Professor	YAMAMOTO Hiroo	hiroh@kedws.ed.kanazawa-u.ac.jp	Curriculum Development	Biomechanics in Health, Physical Education, R&D	1 Ugandan		
Professor	YOSHIKAWA Kyoko	yosikawa@ed.kanazawa-u.ac.jp	Curriculum Development	Expressive Movement Theory			
Professor	HATA Shuji	hata@ed.kanazawa-u.ac.jp	Curriculum Development	Sports Coaching			
Assoc. Professor	Hougaku Atsuroh	hougaku@staff.kanazawa-u.ac.jp	Curriculum Development	Sports Culture			
Assoc. Professor	SAITOH Kazuhiko	saitou@staff.kanazawa-u.ac.jp	Curriculum Development	Sport Pedagogy			
Instructor	MURAYAMA Takayuki	tmura@staff.kanazawa-u.ac.jp	Curriculum Development	Sport Psychology			
Professor	MATSUDAIRA Mitsuo	matsudai@ed.kanazawa-u.ac.jp	Curriculum Development	Clothing Science			
Professor	WATAHIKI Tomoko	watahiki@ed.kanazawa-u.ac.jp	Curriculum Development	Home Economics Education			
Assoc. Professor	OJIMA Kyoko	ojima@ed.kanazawa-u.ac.jp	Curriculum Development	Home Management Studies			
Professor	KANO Mikio	mkano@ed.kanazawa-u.ac.jp	Curriculum Development	Teaching of English	1 Myanmar		
Professor	MORIYA Tetsuharu	moriya33@kenroku.kanazawa-u.ac.jp	Curriculum Development	English Linguistics			
Professor	SAWADA Shigeyasu	sysawada@kenroku.kanazawa-u.ac.jp	Curriculum Development	English Linguistics			
Assoc. Professor	YAMAMOTO Taku	yamatea@ed.kanazawa-u.ac.jp	Curriculum Development	British and American Literature			
Assoc. Professor	KUBO Takuya	takuya@ed.kanazawa-u.ac.jp	Curriculum Development	British and American Literature			
Professor	YOSHIKAWA Kazuyoshi	kazuyosi@ed.kanazawa-u.ac.jp	Special Needs Education	Assessment and Support for the Mental Disability			
Professor	OHI Manabu	ooi@kenroku.kanazawa-u.ac.jp	Special Needs Education	Services to ASD Spectrum	1 Indian		
Assoc. Professor	KAWAI Ryuhei	rykawai@ed.kanazawa-u.ac.jp	Special Needs Education	Theory and System of Special Education			
Assoc. Professor	TAKEI Wataru	wtakei@ed.kanazawa-u.ac.jp	Special Needs Education	Education and Psychology of the Hearing Impaired			
Assoc. Professor	KOBAYASHI Hiroaki	kobah@ed.kanazawa-u.ac.jp	Special Needs Education	Guidance and Clinical Method			



KOBE University (Hyogo Prefecture)



Students have many chances of visiting and teaching fieldwork at our attached schools.

◇ University overview

○ Characteristics and history

Reflecting the cosmopolitan atmosphere of Kobe City, Kobe University has always placed a great emphasis on academic exchanges with foreign universities in various fields and has received a high academic reputation. The university has concluded agreements on academic exchange with 199 prestigious universities and institutions from 46 countries of the world.

○ International Exchanges

· Number of International students

International students (As of May,2010)

Undergraduate students 111

Graduate students 737

Research students 298

Total 1,146 (74 countries)

· Number of Teacher Training students

About 2 students are accepted every year

2009 year 2 students

2008 year 1 students

2006 year 3 students

2005 year 2 students

◇ Outline of the course for Teacher Training students

○ Characteristics of the program

Foreign teachers/employees of the Ministry of Education, Sports, Science and Technology are accepted as teacher trainees under the Graduate School program.

○ Number of students to be accepted: 3 students

○ Outline of the course

· Japanese language education

(1)Period of program : October ,2011 – March ,2012

(2)Basic course : First 6 months: Study of Japanese Life, Education and Culture; Fundamental Japanese Language Study at International Student Center, Kobe University. The next year: Continuation of Japanese Language Study and Study of Japanese Life, Education and Culture; Concentration on research of one's major field of study with a guidance of an academic professor.

· Specialized training

(1)Period of program : April ,2012 – March ,2013

(2)Course, type of teaching, etc.

Attend lectures related to one's study; regular discussion with an academic professor. And some teacher-trainees may conduct research by attending a public school in Kobe city with an assistance and guidance of an academic professor.

April to July Spring Semester (Social gathering in June)

August,September Vacation

October to March Fall Semester (October or November One daytrip)

December Submit reports

February Presentation of your research

March Completion ceremony

· Others

Visiting schools, public facilities such as public halls and museums, and companies.

◇Accommodations:

Teacher's trainees may live in a single room at Hyogo International House, but because of a small number of rooms, it may not be able to accommodate all applicants. In this case, alternative accommodation will be arranged. Residents may reside up to six months.

○ Number of rooms: Single room

159 rooms at Hyogo International House

○ Monthly rent

Admission fee 37,300yen (nonrefundable)

Rent fee 37,300yen + utility (every month)

○ Facilities

air-conditioner, sink, unit bath-room, toilet, refrigerator, telephone, bed, desk, chair, bookshelf etc.

○ Information for Daily Life

5 minutes to walk to the nearest station, JR Nada station.

Commuting time to school: 30-40 minutes by train

◇Contact

Address: 3-11, Tsurukabuto Nada-ku KOBE, 657-8501, Japan

Department: Academic and Student Affairs section, Graduate school of Human Development and Environment

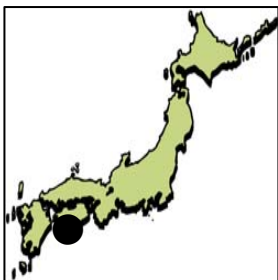
TEL: +81-78-803-7924 / FAX: +81-78-803-7929

E-mail :hudev-kyomu@office.kobe-u.ac.jp

Home-Page: <http://www.kobe-u.ac.jp>

◇ Course Description, Number of students to be accepted, Qualifications and, etc.

Graduate School of Human Development and Environment					
Name of Adviser	E-mail	Teaching Field(s)	Course Description	Number of students to be accepted	Qualification and Requirement for students. Number of students in past 5 years.
ODA TOSHIKATSU (Professor)	oda@kobe-u.ac.jp	Social welfare,Sociology	Social security system in Japan	1	Japanese(Basic) Conversation or Intemediate English
TERAKADO YASUTAKA (Professor)	terakado@kobe-u.ac.jp	Geology	Age determination of rocks	1	Japanese(Basic) Conversation
NAGASAKA KOSAKU (Associate Professor)	nagasaka@main.h.kobe-u.ac.jp	Applied geometry	Topology and its applications	1	Japanese(Basic) Conversation



Kochi University (Kochi Prefecture)



Each student will have an academic adviser, who will help him/her organize a curriculum, taking his/her field of studies and interests

◇ University overview

○ Characteristics and history

Kochi University was founded in 1949 as a new authorized national institution on the amalgamated revision of KSchool ochi Teacher Training School, Kochi High and Kochi Young Men's Teacher Training School, merged with Kochi Medical College in October 2003, and started anew as National University Corporation Kochi University in April 2004. Kochi University aims at providing higher education with Kochi's free and generous spirit as its background.

Kochi Prefecture faces the Pacific Ocean to the south against a backdrop of the Shikoku Mountain Range to the north, and is characterized by a climate of four distinct seasons. The Kagami River runs through the city. Kochi City is blessed with a variety of historical sites, and Kochi University has three campuses, Asakura Campus in Kochi City and Monobe and Oko Campuses in Nankoku City.

○ International Exchange (As of May 1, 2010)

At present Kochi University has an enrolment of 143 international students from 23 different countries. Student exchanges started in 1974 between Kochi University and the University of Queensland, Australia, and the two institutions signed the "Agreement on the Student Exchange Program" in 1980. In 1989, Kochi University and California State University, Fresno and in 2006, Kochi University and Göteborg University signed. So far Kochi University has concluded exchange agreements with 63 international universities.

◇ Outline of the course for Teacher Training students

○ Characteristics of the program

Each student will have an academic adviser, who will help him/her organize a curriculum, taking his/her field of studies and interests.

○ Number of students to be accepted:

A few students

○ Outline of the course

- Japanese language education

Students are initially required to take Japanese language lessons for the first 6 months at the General Education Center (Japanese and International Student Support Section) at Kochi University. In addition, they are allowed to take Japanese Language classes offered by the Faculty of Humanities and Economics and Common Education.

- Specialized training

a) Courses, Types of Teaching, etc.

A special curriculum, which consists of lectures, seminars, experiments, and individual tutoring will be provided to meet the requirements of each student.

b) Courses Taught in English

Basically, most classes are given in Japanese, except for some classes related to English.

○ Accommodation information

85%: Bicycle (within 10m: 55%, 10-15m: 30%)

80% accommodation: within 2 km

※In case of this program, he/ she will live in Asakura Campus

◇ Accommodations

(As of May 1, 2010)

Asakura Campus:

Tokiwa/ Katsura/ Nanmei Dormitory ¥7,500-20,000

Monobe Campus

Nissho Dormitory about ¥9,000

Foreign Student Dormitory ¥9,500

International House(Single¥5,900/ Double¥11,900/
Family¥14,200)

Oko Campus

International House(Single¥5,900/ Double¥11,900/
Family¥14,200)

*Dormitory: Table/ chair/ bed/ locker/ bookshelf/
common bathroom& kitchen

*International House: Table/ chair/ bed/ locker/
bookshelf/ wardrobe/ washing machine/ refrigerator/
air-conditioner/ stove/ individual bathroom& kitchen.

◇ Contact

Address: 2-5-1 Akebono-cho, Kochi-shi

Kochi 780-8520 JAPAN

International Student Exchange Office

TEL: +81-88-844-8145 FAX: +81-88-844-8718

E-MAIL: gs05@kochi-u.ac.jp

URL: <http://www.kochi-u.ac.jp/>

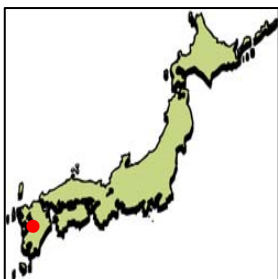
Name: Kochi University

◇ Course Description, Number of students to be accepted, Qualifications and, etc.

Faculty of Education/ Graduate School of Integrated Arts and Sciences(Studies in Education)					
Name of adviser	E-mail	Teaching Field(s)	Course Description	Number of students to be accepted	Qualification and Requirement for students. Number of students in past 5 years.
Prof. Ken Kawasaki	kensced@kochi-u.ac.jp	Science Education	Science Education	1	Daily Japanese conversation skills
Prof. Shunichiro Koh	koh@kochi-u.ac.jp	Science Education (Faculty) Solid State Physics (Graduate)	Physics		
Prof.Michio Fuki	fuki@kochi-u.ac.jp	Cosmic Ray Physics	Physics		
Prof. Keiji Gamoh	kgamoh@kochi-u.ac.jp	Organic Analytical Chemistry	Analytical Chemistry		
A. Prof. Tetsuo Harada	haratets@kochi-u.ac.jp	Insect Ecophysiology, Chronobiology	Biology		
A.Prof.Gyo Itani	itani@kochi-u.ac.jp	Benthology	Marine Biology		
Prof. Hidefumi Tanaka		Solid Earth Sciences	Paleointensity experiments from volcanic rocks		
A Prof. Tadashi Akamatsu		Geoscience	Mineralogical Science		
Prof. Shinji Miyata		Instrumental music	Piano		
Prof. Joji Obara		Vocal Music	Vocal solo		
Prof. Tsuneo Nasu	nasu@kochi-u.ac.jp	English Language Education	English Language Education	1	Applicants are required to have an elementary level of Japanese/ Daily Japanese conversation skills
A. Prof. Shizuya Tara	tara@kochi-u.ac.jp	English Language Education	English Language Education		
Prof. Kanae Obika	obika@cc.kochi-u.ac.jp	English Literature	English Literature		
A. Prof. Fuminori Matsubara	fuminori@kochi-u.ac.jp	English Linguistics	Syntax		
Prof. Masaki Taniguchi	tamasaki@kochi-u.ac.jp	English Linguistics	English Phonetics, Speech Communication	1	Applicants are required to have proficiency in English but not in Japanese

Name of adviser	E-mail	Teaching Field(s)	Course Description	Number of students to be accepted	Qualification and Requirement for students. Number of students in past 5 years.
A.Prof. Hideaki Okatani	okatani@kochi-u.ac.jp	Pedagogy	Educational Phylosophy	2	Daily Japanese conversation skill/ Japanese conversation skills for discussion/ Understanding lectures where Japanese is used.
A.Prof. Masayuki Kato	kato-masayuki@kochi-u.ac.jp	Pedagogy	Youth Support		
A.Prof.Nobuhiko Yanagibayashi	nyanagi@kochi-u.ac.jp	Pedagogy	Educational Administration		
Prof. Junichi Uchida	uchida@kochi-u.ac.jp	Pedagogy	Community Education		
A.Prof.rMotoharu Kanayama	kanayama@kochi-u.ac.jp	Psychology	Developmental Psychology		
Prof. Naofumi Fujita	fujita@kochi-u.ac.jp	Psychology	Educational Psychology		
Prof. Youichi Babazono	babazono@kochi-u.ac.jp	Psychology	Educational Psychology		
Prof. Saburo Kariya	skariya@cc.kochi-u.ac.jp	Physical Education Pedagogy	Teachers Behaviors, Class Evaluation, Track & Field	1	Daily Japanese conversation skills
Prof. Toshiharu Inada	inada@kochi-u.ac.jp	Sociology of Sports	Lifelong Sports		
Prof. Teruki Noji	noji@kochi-u.ac.jp	Coaching Method	Sports(Soccer) Coaching		
Prof. Kazushige Kamiya	kamiya@cc.kochi-u.ac.jp	Movement Theory in Sports (Faculty) Pedagogy of Physical Education (Graduate)	Morphological Study on Movement in Sports, Apparatus exercise (Faculty) Movement Instruction in Physical Education Class (Graduate)		
Prof. Setsuo Komai	komai@cc.kochi-u.ac.jp	Exercise physiology of Sports	The study of the aerobic exercise		
Prof. Kiyoyasu Honma		Health Science	Lifestyle and Health		
Prof. Toshiyuki Nakano	tnakano@kochi-u.ac.jp	Mathematics Education	Mathematics Education		
Prof. Keiyu Kunimoto	coonie@kochi-u.ac.jp	Mathematics Education	Mathematics Education		
Prof. Tomikazu Fujimoto	tomikazu@kochi-u.ac.jp	Constitution	Japanese Constitution	1	Ability to read books about law written in Japanese
Prof. Eiji Fujita	efujita@kochi-u.ac.jp	Teaching Social Studies	Teaching Social Studies	1	Japanese conversation skill for discussion
A. Prof. shihiroFujitsuka	fujituka@kochi-u.ac.jp	Geography	Urban Geography	1	Japanese conversation skill for discussion
Prof. Makoto Kuno		Japanese Linguistics	Fundamental study in linguistic system of Japanese (Faculty) Contrastive research between Japanese and other language (Graduate)	1	The fundamental ability to read and write Japanese

Name of adviser	E-mail	Teaching Field(s)	Course Description	Number of students to be accepted	Qualification and Requirement for students. Number of students in past 5 years.
Prof. Takatoshi Endo	endo@cc.kochi-u.ac.jp	Oriental History	Chinese History	1	Daily Japanese conversation skills
Prof. Michihiko Harasaki	harasaki@kochi-u.ac.jp	Philosophy	History of Western Philosophy	1	The fundamental ability to read and write Japanese
A Prof. Satoshi Yamazaki	yamazaki@kochi-u.ac.jp	Economics	Economic Thought	1	Japanese conversation skill for discussion
Prof. Takahiro Doihara	doihara@kochi-u.ac.jp	European Art	European Art	1	Daily Japanese conversation skills
Prof. Seiji Yoshimitsu	yosimitu@kochi-u.ac.jp	Woodworking	Japanese traditional woodcraft		
Lecturer. Kazuhiro Yoshioka	gs05@kochi-u.ac.jp	Graphic Design	Graphic Design		
Lecturer. Tetsutaro Abe	gs05@kochi-u.ac.jp	Sculpture	Sculpture		
Prof. Yoshimasa aneko	gs05@kochi-u.ac.jp	Arts and Crafts Education	Lecture on Method and Theory of Arts and Crafts Education (Faculty) Lecture and Seminar on Arts and Crafts Education (Graduate)	1	The fundamental ability to read and write Japanese/ Daily Japanese conversation skills
Prof. Kyoko Kojima	kkojima@kochi-u.ac.jp	Home Economics Education	Home Economist Education・Consumer Sciences		
Prof. Kazuko Tamura	gs05@kochi-u.ac.jp	Clothing	Clothing	1	Daily Japanese conversation skills/ Japanese conversation skills for discussion ability to read and write in Japanese
Prof. Rumiko Kikuchi	rumiko@kochi-u.ac.jp	Home Economics Education	Home Economics Education	1	The fundamental ability to read and write Japanese
Prof. Shin-ichi Terada	stera@kochi-u.ac.jp	Psychology For Children with Developmental Disabilities	Psychology For Children with Developmental Disabilities	1	Japanese conversation skill for discussion ability to read in Japanese
Prof. Yoshihiro Masuo	masuo@kochi-u.ac.jp	Technology Education	Technology Education	1	Daily Japanese conversation skills
A Prof. Kanako Korenaga	sverige@kochi-u.ac.jp	Special Needs Education	Special Needs Education	1~2	Daily Japanese conversation skills
Prof. Aya Yamanaka	stanuma@cc.kochi-u.ac.jp	Music Education	Music Education	1	The fundamental ability to read and write Japanese
A Prof. Takashi Koguchi	kogutaka@kochi-u.ac.jp	Clinical Psychology, Behavioral Medicine	Stress-related Disease, Cognitive Behavior Therapy	1	Daily Japanese conversation skills
Lecturer. Nozomi Shimada	nshimada@kochi-u.ac.jp	Pedagogy	Teaching and Curriculum Design	1	Daily Japanese conversation skills. The fundamental ability to read and write Japanese



Kumamoto University (Kumamoto)



Kumamoto University

The goal of Kumamoto University's pre-service and in-service teacher development program is to give basic and professional knowledge and skills in various areas of Japanese education.

University Overview

Kumamoto University was established in May 1949 incorporating several institutions, including The Fifth High School and Kumamoto Medical College. Now, it has seven undergraduate faculties and seven graduate schools. There are about 10,000 undergraduate and graduate students, and about 2,100 teaching staff.

Faculties

Letters, Education, Law, Science, Medicine, Pharmaceutical Sciences, and Engineering.

Graduate Schools

There are seven faculties offering graduate level study: Education, Social and Cultural Sciences, Science and Technology, Medicine, Pharmaceutical Sciences, and Health Science. There is also a separate School of Law established in 2004.

Graduate School of Education

In the Graduate School of Education, there are currently two majors: Educational Practices and School Subjects Methods and Practices ,

In addition to college graduates, the Graduate School of Education also accepts in-service school teachers. Its goal is to improve the quality of teachers through general research related to achieving practical educational results.

As of October 1, 2010 there were 371 foreign students from 41 countries studying at Kumamoto University. The number of in-service teachers from other countries accepted to the Graduate School program in the last three years is (1) 2010:2(Myanmar, Philippines); (2)2009:4(Brazil, Indonesia, Myanmar, Mongolia); (3) 2008:3(Myanmar, Honduras, Indonesia);

In 1995, the International Student Center was established to provide education and guidance for students from abroad. As of October 1, 2009, Kumamoto University has established international exchange agreements with 110 colleges, universities, and institutions in 27 countries.

Program Outline

The goal of Kumamoto University's teacher education program is to give basic and professional knowledge and skills in various areas of Japanese education. The Faculty of Education conducts specialized courses for students who wish to be kindergarten, elementary, junior, or senior high school teachers in the following subjects: Japanese, social studies, mathematics, natural science, music, art, health and physical education, industrial technology, living sciences, English, special support education (pedagogy, psychology), and school health nursing education. Total number of students accepted:32

Courses

- ① Japanese language (October 2011 to March 2012)
Japanese for everyday living and for conducting research after entering Kumamoto University.
Beginning and intermediate courses are available.
- ② Specialized Course (April 2012 to March 2013):
Mainly individual instruction from the student's academic advisor. Students also take regular classes with other undergraduates or graduate students to deepen knowledge of their research subject. At the end of the academic year, students are expected to present their research results.
- ③ Others:
Individual field trips with academic advisors.
On-site observations at schools.
School-sponsored field trips.
Field trips to cultural facilities and historic sites. These are offered once a year as part of the University's educational guidance.

Accommodations

International House, the dormitory for International students, is located about 1.5 km east of the Main Campus. More than 100 international students and guest scholars reside there.

Rent Cost (excluding water and electricity)

Single room: ¥9,000
Double room: ¥14,000
Family room A: ¥20,000
Family room B: ¥18,000

Room Deposit

Single room: ¥18,000
Double room: ¥28,000
Family room A: ¥40,000
Family room B: ¥36,000

Furnishings

Sink, shower and toilet, air conditioner, bed, refrigerator, electric, cooker, desk, telephone (for receiving calls only).

For further information, please contact:

Center for Globalization, Kumamoto University
2-40-1 Kurokami
Kumamoto 860-8555 Japan
TEL: +81-96-342-2103
FAX: +81-96-342-2130
E-mail: gji-ryugaku@jimu.kumamoto-u.ac.jp
HP: <http://www.kumamoto-u.ac.jp/>

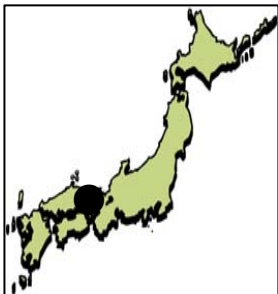
Syllabus: <http://info.kumamoto-u.ac.jp/kumamoto-u/campus>

Kumamoto University

Master's Course in Education							
Name of adviser	Mail Address	Teaching field(s)	Course description	Number of students to be accepted	Others	Number of previous students	
Masaomi Horihata	professor	horihata@educ.kumamoto-u.ac.jp	Japanese Linguistics	Problems of Japanese Classical Linguistics	1		
Naoki Haruta	associate professor	haruta@educ.kumamoto-u.ac.jp	Japanese History	Regional History	1		
Mamoru Yamanaka	professor	yamanaka@educ.kumamoto-u.ac.jp	Economics	Econometric Analysis			
Kozo Yamamoto	associate professor	kya@educ.kumamoto-u.ac.jp	Geography	Human Geography			
Hideyuki Yahata	professor	yahata@gpo.kumamoto-u.ac.jp	Ethics	Problems of Ethics			
Rieko Ueda	associate professor	ueda@educ.kumamoto-u.ac.jp	Law	Legal History			
Jin-ichi Itoh	professor	j-itoh@gpo.kumamoto-u.ac.jp	Mathematics	Geometry	1		
Kazumori Masamoto	professor	masamoto@gpo.kumamoto-u.ac.jp	Biology	Botany, Education in Biological Sciences	1	1 (Myanmar)	
Tsutomu Tanabe	associate professor	tanabe@gpo.kumamoto-u.ac.jp	Biology	Ecology, Zoology			
Hideaki Shimada	professor	shimada@educ.kumamoto-u.ac.jp	Chemistry	Organic Chemistry, Environmental Chemistry, Education in Chemistry			1 (Jordan)
Hitoshi Tanaka	professor	hitoshi@educ.kumamoto-u.ac.jp	Geology	Biostratigraphy, Education in geology			
Yasuo Miyabuchi	associate professor	yasuo@educ.kumamoto-u.ac.jp	Earth Science	Volcanology, Geomorphology			
Kazuhiro Fukushima	professor	fksm@educ.kumamoto-u.ac.jp	Physics	Physics Education, Nonlinear Physics			1 (Egypt)
Keita Kishigi	associate professor	kishigi@educ.kumamoto-u.ac.jp	Physics	Physics Education, Condensed Matter Physics			1 (Egypt)
Shigeyoshi Watanabe	associate professor	shige@educ.kumamoto-u.ac.jp	Science Education	Science Education, Biology Education			1 (Malaysia)
Kyoko Mori	associate professor	mori@educ.kumamoto-u.ac.jp	Music Education	Music Education	1		
Takatsugu Hirawa	professor	hirawa@educ.kumamoto-u.ac.jp	Music Education	Voical Music			
Seigo Yoshinaga	professor	yoshinag@gpo.kumamoto-u.ac.jp	Music Education	Music Education			
Harue Kunieda	associate professor	harue@educ.kumamoto-u.ac.jp	Music Education	Composition			
Izumi Hakamada	professor	izumy@educ.kumamoto-u.ac.jp	Music Education	Instrumental Music			
Takashi Nakayama	professor	nakayama@educ.kumamoto-u.ac.jp	Musicology	Music Theory, History of Music			

Master's Course in Education						
Name of adviser	Mail Address	Teaching field(s)	Course description	Number of students to be accepted	Others	Number of previous students
Motohiro Umeda	professor	umeda@educ.kumamoto-u.ac.jp	Art Education	Construction, design	1	
Masaki Yokode	professor	myokode@educ.kumamoto-u.ac.jp	Art Education	Art Education	1	
Noboru Yoshikawa	professor	nobo@educ.kumamoto-u.ac.jp	Art Education	On the Study of Art Theory and Art History	1	
Hitoshi Sugou	professor	sugou@educ.kumamoto-u.ac.jp	Art Education	Wood Craft, Art Education	1	
Takumi Matsunaga	associate professor	matsu@educ.kumamoto-u.ac.jp	Art Education	Painting(Western Style Painting)	1	
Nobuyuki Ogata	associate professor	nobuyuki@educ.kumamoto-u.ac.jp	Art Education	Sculpture	1	
Reiko Sakashita	professor	reiko@educ.kumamoto-u.ac.jp	Health and Physical Education	Teaching Theory of Physical Education, Dance, Gymnastics	1	1 (Indonesia)
Yuji Ozawa	associate professor	phyj@educ.kumamoto-u.ac.jp	Sports Kinematics	Sports Kinematics, JUDO		
Shiroh Norimoto	professor	norimoto@gpo.kumamoto-u.ac.jp	Health and Physical Education	Teaching Theory of Physical Education		
Takahiro Goto	associate professor	goto5555@educ.kumamoto-u.ac.jp	Physical Education	Sport Sociology		
Yasutaka Nakagawa	professor	nakagawa@educ.kumamoto-u.ac.jp	Management of Physical Education	Management of Physical Education And Sport		
Takashi Karasugi	associate professor	karasugi@gpo.kumamoto-u.ac.jp	Sports Kinematics	Principles of Physical Education	1	
Hirotohi Ifuku	professor	ifuku@kumamoto-u.ac.jp	Sports Kinematics	Exercise Physiology		
Yasuharu Ohishi	associate professor	oishi@gpo.kumamoto-u.ac.jp	Sports Kinematics	Exercise Physiology		
Mitsuo Tsukamoto	professor	tsuka@educ.kumamoto-u.ac.jp	Technology Education	Metal Work	1	
Kimiko Numata	professor	kimiko@educ.kumamoto-u.ac.jp	Home Economics	Cooking Science, Dietary Habits	1	
Kayoko Torikai	professor	torikai@educ.kumamoto-u.ac.jp	Home Economics	Housing Design, Housing Plan, Urban Design	1	
Ayako Yahata	associate professor	ayako@educ.kumamoto-u.ac.jp	Home Economics	Home Management, Principles of Home Economics	1	
Mitsuko Miyase	associate professor	miyase@educ.kumamoto-u.ac.jp	Home Economics	Homemaking Education, Environmental Education	1	
Tamami Soda	associate professor	soda@educ.kumamoto-u.ac.jp	Home Economics	Clothing, Clothing Construction	1	

Master's Course in Education							
Name of adviser	Mail Address	Teaching field(s)	Course description	Number of students to be accepted	Others	Number of previous students	
Tatsuhiko Toda	professor	toda@educ.kumamoto-u.ac.jp	English Language Teaching	English Linguistics / Linguistics	1		
Kenji Matsuse	associate professor	matsusek@educ.kumamoto-u.ac.jp	English Language Teaching	History of English	1		
Shiro Ikeda	associate professor	ikedash@educ.kumamoto-u.ac.jp	English Language Teaching	American Literature	1		
Ren-ichi Suzuki	professor	rsuzu@educ.kumamoto-u.ac.jp	English Language Teaching	English Literature	1		
Nobuyuki Takaki	professor	pigate@educ.kumamoto-u.ac.jp	English Language Teaching	English Education(Teacher Training)	1	1 (Brasil)	
Hiroshi Shimatani	associate professor	shima@educ.kumamoto-u.ac.jp	English Language Teaching	English Education(Teaching Method)	1	1 (Indonesia)	
Teppey Kikuchi	associate professor	kikuchi@educ.kumamoto-u.ac.jp	Special Support Education	Psychology for Children with Disability	1		
Shoji Higo	associate professor	higosh@gpo.kumamoto-u.ac.jp	Special Support Education	Education for Children with Disability	1		
Hiroko Furuta	associate professor	fh91@educ.kumamoto-u.ac.jp	Special Support Education	Education for Children with Disability	1		
Takashi Hoshikawa	professor	hosikawa@educ.kumamoto-u.ac.jp	Special Support Education	Intervention for Student with Disability	1	1(Philippines)	
Yoichi Nakata	professor		Pedagogy	School Management	2	Basic knowledge of Japanese	1 (China)
Haruo Manba	associate professor	manba@educ.kumamoto-u.ac.jp	Pedagogy	Moral Education			1 (China)
Kotarou Hori	professor	horiko@educ.kumamoto-u.ac.jp	Pedagogy	History of Education			
Yoichi Shiraishi	associate professor	shiro@educ.kumamoto-u.ac.jp	Pedagogy	Educational Method			1 (Paraguay)
Miho Fuii	associate professor	fujii@educ.kumamoto-u.ac.jp	Pedagogy	Sociology of Education			
Chiaki Yamashiro	associate professor	qiangiu@educ.kumamoto-u.ac.jp	Pedagogy	Youth-Adult Education			
Daisuke Kobayashi	associate professor	dk2@educ.kumamoto-u.ac.jp	Pedagogy	Philosophy of Education			
Noriyuki Nagata	professor	naga@educ.kumamoto-u.ac.jp	Pediatrics	Pediatrics, School Health			
Yosiko Matsuda	professor	matsuda@educ.kumamoto-u.ac.jp	School Health	Yogo Teacher's Education, School Health, Health Education	1		
Yuuko Honda	associate professor	honda@educ.kumamoto-u.ac.jp	Science of nursing	Health Education, Mental Health			
Fumihiro Omasu	associate professor	fomasu@educ.kumamoto-u.ac.jp	Public Health	Epidemiology , Physiology			
Number of students to be accepted (total)					32		



Kyoto University of Education

(Kyoto Prefecture)



Kyoto University of Education offers a training based on practical teaching at schools. A dedicated academic adviser supports your research.

◇ The University

1. The University

(a) Regional Features

Kyoto has more than 1200 years of history and was once the capital of Japan.

It still remains very active and progressive in arts and academic activities, attracting both native and overseas students and tourists.

(b) Feature and Outline

The campus is very conveniently located in the southern part of historic city of Kyoto. Over 130-year-old university offers a Teacher Training program.

The postgraduate research program includes 13 departments: Education, Social Sciences, Japanese Culture, Western Culture, Mathematics, Science, Physical Education, Music, Fine Arts, Home Economics, Industrial Arts, Developmental and Handicapped-Education and Child-care Education. The natural, green and spacious campus (140,000 sq. meters) also holds Organization of Educational Research and Practice Centers, Information Processing Center, and Health Center.

(c) International Students

Fiscal Year (Foreign Students)《 Teacher Training Students》

2006 (64)《8》, 2007 (53)《8》, 2008 (36)《6》
2009 (52)《10》, 2010 (55)《12》

(d) Others (Organization)

Research Division of Education

The United Graduate school of Professional Teacher Education

Instructors: 136

Undergraduates: 1,381 Postgraduates: 180

Postgraduates (The United Graduate School): 122

Postgraduate Special Education: 21

◇ Course Outline of Teacher Training

1. Program Features

Kyoto University of Education offers a training based on practical teaching at schools. Two primary schools, two junior high schools, a high school, a School for Children with Special Needs and a kindergarten are affiliated with the university. Adding to this, the research takes place in the Kyoto environment, where international and traditional culture thrives.

2. Number of students to be accepted 8 students.

3. Outline

(a) Japanese Language Education

Term: 6 months – October 1st, 2011 thru March 31st, 2012.

There is no course solely for the purpose of teaching Japanese Language for Teacher Training Students at this university.

* In the case of applicants having an already advanced level of Japanese language ability, the Japanese Language Course will be shortened and they may proceed to directly to their specialized research studies.

(b) Special Education

Term: 1 year – April 1st, 2012 thru March 31st, 2013.

Advisers specific to one's desired area of study and individual research is possible.

There are no tuition fees for Teacher Training Students and depending on level of interest, Japanese language ability and understanding of the area of study, with the permission of the department, postgraduate courses may be attended.

Under the guidance of one's advising instructor, a final research paper is to be submitted.

(c) Practical Training, Activities, etc.

There are possible participatory visitations to school classes and activities of affiliated or regional schools. Twice a year, foreign research students may also participate in excursions, foreign student focused events and other sponsored cultural activities.

◇ Accommodations

(a) Accommodations are available through the university.

Average Monthly Rent ¥ 30,000

Average Monthly Transportation ¥ 10,000

(b) 10 single rooms

1 family room

(c) Equipment

Each room has an air-conditioner, a water heater, a unit bathroom, curtains and basic furnishings.

(d) Living information around the accommodations and time to the university

A shopping mall, a hospital, a park and a library are in walking distance.

It takes about 30 minutes total on a train and walking to Kyoto University of Education, one hour to the Japanese Language Training facility.

◇ For Further Inquiries:

Address :

612-8522 1, Fujinomori-cho, Fukakusa,
Fushimi-ku, Kyoto-shi, Japan

Administration :

Office :

International Student Exchange Section

Contact (TEL•FAX•E-mail) :

TEL : +81-75-644-8159

FAX : +81-75-644-8169

E-mail : intel@kyokyo-u.ac.jp

Home Page Address :

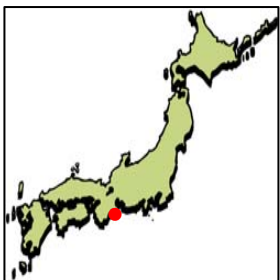
<http://www.kyokyo-u.ac.jp/>

◇Research Contents, Possible Applicants, Field Specialties, Conditions, Requirements and etc.

Research Division of Education					
Name of Adviser	E-mail Address	Teaching Field(s)	Content(s)	Possible Applicants	Conditions, Requirements(From past 5 years Acceptance Records)
MORIYAMA Takuro Professor	moriyama@kyokyo-u.ac.jp	Japanese Linguistics	1. Studies of Japanese Grammar (Syntax & Semantics)	1 Student	Contrastive studies are also available.
HAMADA Mari Associate Prof.	hamadam@kyokyo-u.ac.jp	Teaching Japanese as a Second Language Intercultural Education	1. Studying approaches and contents of TJSL 2. Studying intercultural contact situation	1 Student	Must have one year or longer prior experience of teaching Japanese or directing foreign language program. Sufficient language ability to be able to receive guidance from research advisers in Japanese. OR must have TOEFL score of 61 or more on the Internet-Based Testing , or approximate level of English proficiency.(From past 5 years Acceptance Records 5)
TANIGUCHI Tadashi Professor	tadashi@kyokyo-u.ac.jp	Chinese Studies in Japan	1. Studies of Chinese Prose and Poetry Written by Japanese Writers	1 Student	Sufficient language ability to be able to receive guidance from research advisers in Japanese.
OKUNO Kumiko Associate Prof.	okunokm@kyokyo-u.ac.jp	Modern Japanese Literature	1. Study of Modern Japanese Literature	1 Student	Sufficient language ability to be able to receive guidance from research advisers in Japanese.(From past 5 years Acceptance Records 1)
HIRAISHI Takatoshi Professor	hiraishi@kyokyo-u.ac.jp	Social Philosophy Applied Ethics	1. Deepen the basic understanding of present day Philosophy and Ethics and subsequent issues. 2. Specialized readings related to research topic	1 Student	Sufficient language ability to be able to receive guidance from research advisers in Japanese.
YAMASHITA Hirobumi Professor	mountain@kyokyo-u.ac.jp	Social Science Education Environmental Education	1. Studies on the Social Sciences contemporary Japanese Citizenship Education and Environmental Education 2. Practical training in Elementary & Junior High Schools	1 Student	Chosen Field of study and field of specialty must be the same. Must be at least an elementary level teacher. Sufficient language ability to be able to receive guidance from research advisers in Japanese.
MIZUYAMA Mitsuharu Professor	mizuyama@kyokyo-u.ac.jp	Social Studies Citizenship Education Environmental Education	1. Basic understanding of Social Studies, Citizenship and Environmental Education 2. Practical research in Primary and Secondary Schools	1 Student	Sufficient language ability to be able to receive guidance from research advisers in Japanese.(From past 5 years Acceptance Records 2)
KAGAWA Takashi Professor	kagawa@kyokyo-u.ac.jp	Urban Geography	1. Deepen the understanding about Japanese cities	1 Student	Research theme must relate to chosen field of Study. Sufficient language ability to be able to receive guidance from research advisers in Japanese.
TAOKA Fumio Professor	taoka@kyokyo-u.ac.jp	Japanese Economy	1. Contemporary Japanese Economy 2. Modern History of Japanese Economy	1 Student	Sufficient language ability to be able to receive guidance from research advisers in Japanese.
ISHIKAWA Makoto Associate Prof.	ishikawa@kyokyo-u.ac.jp	Environmental economics	1. Studies of Environmental Economics and Policy	1 Student	Chosen Field of study must be the same. Sufficient language ability to be able to receive guidance from research advisers in Japanese.
KIRIKI Shin Professor	skiriki@kyokyo-u.ac.jp	Dynamical systems	1. Non hyperbolic dynamical systems and chaotic behavior	1 Student	
SHIBAHARA Hiroyasu Professor	shiba@kyokyo-u.ac.jp	Science Education (Chemistry)	1. Developments in Teaching Material for Science Education.(Microscale Chemistry Experiments) 2. Study and Observation of Science Class in Japan	1 Student	Sufficient language ability to be able to receive guidance from research advisers in Japanese or a score of more than 61 in TOEFL(Internet-Based Testing).
KAJIWARA Yuuji Professor	kajiwara@kyokyo-u.ac.jp	Biology	1. Research works of animal development, especially of mammalian development 2. Reading of the textbooks related to developmental biology	1 Student	Sufficient language ability to be able to receive guidance from research advisers in Japanese.

Name of Adviser	E-mail Address	Teaching Field(s)	Content(s)	Possible Applicants	Conditions, Requirements (From past 5 years Acceptance Records)
TANAKA Satoshi Associate Prof.	stanaka@kyokyo-u.ac.jp	Earth Science (Geology)	1. Study and observation of Geology in Japan	1 Student	Sufficient language ability to be able to receive guidance from research advisers in Japanese.
TANAKA Takako Professor	taka@kyokyo-u.ac.jp	Music	1. Decent the understanding of Japanese Music Culture and its History	1 Student	Sufficient language ability to be able to receive guidance from research advisers in Japanese, or Must have score of more than 79~80 in TOEFL(Internet-Based Testing).
MURATA Toshihiro Professor	tomurata@kyokyo-u.ac.jp	Arts Education	1. Deepen the understanding of Arts Education in Japan 2. Teaching Methods 3. Evaluation	1 Student	Research topic must relate to chosen field of study. (From past 5 years Acceptance Records 2)
ISHIKAWA Makoto Professor	mishik@kyokyo-u.ac.jp	Art Education	1. Research on Art Appreciation and Museum Education 2. Understanding art education in Japan	1 Student	Research theme must be related to chosen Field of Study. Sufficient language ability to be able to receive guidance from research advisers in Japanese or a score of more than 61 in TOEFL(Internet-Based Testing).(From past 5 years Acceptance Records 1)
NAKA Hiroshi Professor	gori@kyokyo-u.ac.jp	Sport Management Developmental Education	1. Comparison of sports environments of child in Japan and home country 2. Comparison of policies to promote sports in Japan and home country 3. Comparison development of children and young people in Japan and home country 4. Comparison of school physical education curriculums in Japan and home country	1 Student	Chosen Field of study and research topic must be related. Sufficient language ability to be able to receive guidance from research advisers in Japanese.
ITANI Keiko Professor	itani@kyokyo-u.ac.jp	Health and Physical Education	1. Deepen the understanding of Physical Education in Japan 2. Research related to research topic 3. Practical research in Elementary and Secondary Schools	1 Student	Chosen Field of study and field of specialty must be the same. Sufficient language ability to be able to receive guidance from research advisers in Japanese or a score of more than 61 in TOEFL(Internet-Based Testing).
INOUE Fumio Professor	finoue@kyokyo-u.ac.jp	School Health	1. Deepen the understanding of Health Education in Japan 2. Readings of thesis related to research topic	1 Student	Chosen Field of study and field of specialty must be the same. Sufficient language ability to be able to receive guidance from research advisers in Japanese or a score of more than 61 in TOEFL(Internet-Based Testing). (From past 5 years Acceptance Records 1)
ITO Shinichi Associate Prof.	itoh@kyokyo-u.ac.jp	Information Science	1. Computational Physics	1 Student	Must have corresponding research topic.. Sufficient language ability to be able to receive guidance from research advisers in Japanese or a score of more than 61 in TOEFL(Internet-Based Testing).
NISHIMOTO Yuichi Professor	yuitsu@kyokyo-u.ac.jp	English Language Education Vygotsky studies	1. Teaching English as a Foreign or Second Language 2. Vygotsky's Cultural - Historical Theory	2 Students	Chosen Field of study and field of specialty must be the same. Sufficient language ability to be able to receive guidance from research advisers in Japanese or a score of more than 79~80 in TOEFL(Internet-Based Testing). (From past 5 years Acceptance Records 3)
IZUMI Emiko Professor	emiko@kyokyo-u.ac.jp	English Language Education Applied Linguistics	1. Teaching English as a Foreign or Second Language 2. Teaching and Evaluating for the Communicative Competence	1 Student	Chosen Field of study and field of specialty must be the same. Sufficient language ability to be able to receive guidance from research advisers in Japanese or a score of more than 79~80 in TOEFL(Internet-Based Testing). (From past 5 years Acceptance Records 3)
OKABE Mika Associate Prof.	okabe@kyokyo-u.ac.jp	Educational history Educational Anthropology	1. History of Japanese Education and Educational Thoughts 2. Historical and Anthropological Study on Childhood	1 Student	Chosen field of study and field of specialty must be the same. Sufficient language ability to be able to receive guidance from research advisers in Japanese.(From past 5 years Acceptance Records 1)
HOMMA Tomomi Professor	honna@kyokyo-u.ac.jp	Clinical Psychology	1. Study of Clinical Psychology in Japan 2. Study and observation of counseling	1 Student	Chosen field of study and field of specialty must be the same. Sufficient language ability to be able to receive guidance from research advisers in Japanese.
YANAGAWA Tadashi Professor	yanagawa@kyokyo-u.ac.jp	Horticultural Science, Plant tissue culture	1. Studies of Horticultural Science, and Environmental Education 2. Study of Plant Tissue Culture	1 Student	Chosen field of study and field of specialty must be the same. Sufficient language ability to be able to receive guidance from research advisers in Japanese or a score of more than 61 in TOEFL(Internet-Based Testing).

The United Graduate school of Professional Teacher Education					
Name of Adviser	E-mail Address	Teaching Field(s)	Content(s)	Possible Applicants	Conditions, Requirements(From past 5 years Acceptance Records)
SASAKI Naomasa Associate Prof.	nsasaki@kyokyo-u.ac.jp	Course of Teaching Improvement	1. Study of teaching improvement and teaching method	2 Students	Sufficient language ability to be able to receive guidance from research advisers in Japanese.
KATAYAMA Noriko Professor	nkata@kyokyo-u.ac.jp	Course of Guiddance Improvement	1. Deepen the understanding about Japanese student guidance	2 Students	Sufficient language ability to be able to receive guidance from research advisers in Japanese.(From past 5 years Acceptance Records 1)



Mie University (Mie)



In the Faculty/Graduate School of Education, excellent academic advisors carefully guide and train Teacher-Training Students for their goals.

◇University Overview

○University Overview

Mie University consists of five undergraduate faculties and five graduate schools (Humanities, Education, Medicine, Engineering and Bioresources). The campus is located in Tsu city, blessed with an excellent natural environment facing the beach on the east and the Suzuka Mountains on the north-west.

The Center for International Education and Research plays a central role in the internationalization of Mie University. The center offers Japanese language classes for international students, special courses in English, and a summer school for students invited from partner universities.

○International Exchange

•Number of international students
220 (as of May 1, 2010)

•Number of students accepted to the course
2005 1 (Myanmar)
2006 1 (Venezuela)
2007 1 (Mexico)

◇Outline of the Course

○Program Characteristic

In the Faculty/Graduate School of Education, excellent academic advisors carefully guide and train Teacher-Training Students for their goals.

○Number of Accepted Students

1 per field (for some fields, 2 to 3)

○Outline of the Course

•Preparatory Japanese Language Education

The Center for International Education and Research offers an intensive Japanese language education during the first six months.

Supplementary course at the Center for International Education and Research is available.

Furthermore, an appointed advisor of the Faculty gives supplementary lessons at any time.

•Academic training

Each student pursues his major field of study under the guidance of an academic advisor.

•Others

Students can join events organized by the Center for International Education and Research.

◇Accommodation

Mie University has the well-equipped Foreign Students' House(a) and Foreign Students' Dormitory(b).

They accommodate students joining in this program.

○Number of Rooms

- For singles 30(a), 52(b)
- Quad room 8(only b and only for women)
- For couples 5(a)

○Monthly Dormitory Fee

- For singles 5,900 yen(a),13,000 yen(b)
- For Quad room 6,500 yen(person)
- For couples 11,900 yen

○Equipment

Unit Bath,(only a) toilet, air-conditioner, bed, refrigerator, desk, chair, closet

○Around the Dormitories

There are many convenience stores around the dormitories.

◇Further Information

Address: 1577 Kurimamachiya, Tsu, Mie,
514-8507, JAPAN

Contact: International Relations Office
Academic Affairs and Information
Department
TEL +81-(0)59-231-9688
Fax +81-(0)59-231-5692

E-mail kokusai-t@ab.mie-u.ac.jp

Mie University Home page : <http://www.mie-u.ac.jp>

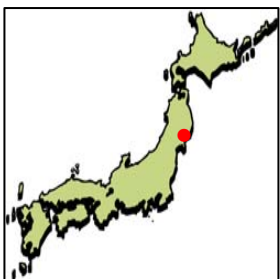
Center for International Education and Research

<http://www.cie.mie-u.ac.jp>

Mie University

◇The contents of training, the number of acceptance, qualification, conditions, etc.

Faculty of Education					
Name of the academic staff (Occupation)	e-mail address	Teaching Field(s)	Researches	Number of students acceptable	The conditions in accepting, an acceptance track record (for the past five years)
Tsutomu Shimomura (Professor)	simomura@edu.mie-u.ac.jp	Educational Technology, Computer Science Education	Application of Information and Communication Tecnology in Education, Development of Educational Material for Computer Science Education	one or two	Aquiring enough Japanese ability for understanding contents of lectures. One (Tailand)
Hitoshi Susono (Professor)	susono@edu.mie-u.ac.jp	Learning Sciences, Educational Media	Digital Storytelling as an e- portfollio, Devepment of Computer Assisted Language Learning ,Distance Learning for International Exchanges	one or two	Aquiring enough Japanese ability for understanding contents of lectures.(none)



Miyagi University of Education

(Miyagi Prefecture)

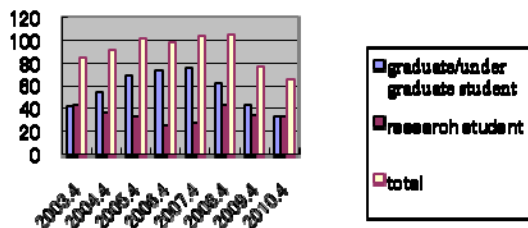


For the future of School Education /As the main Teacher Training Education Facility in Tohoku

◇Introduction to the university

As the only university of education in the Tohoku region, Miyagi University of Education has now been in operation for more than forty five years. MUE consists of the Faculty of Education (Elementary Education Teacher Training Track, Secondary Education Teacher Training Track and Special Needs Education Teacher Training Track), Graduate School (Research Division of Education, Graduate School for Teacher Training) Since its foundation, MUE has had more than 14,000 students who are currently working as teachers, for educational institutions, the public service, the media, companies etc.

Total number of foreign students



Teacher training course students

2007 fiscal year	2008 fiscal year	2009 fiscal year	2010 fiscal year
Three persons	Three persons	Two persons	Six persons

◇Outline of the course

○Features of this program

①Since our university has a close relationship with real school education, students can acquire realistic experience out of university. ②Furthermore, students can receive high quality education in small classes, ③and can attend a number of exchange activities with Japanese students and foreign students.

○Number of students to be accepted : Seven students each year

○Period of the course : From October 1, 2011 to March 31, 20123

○Overview of classes

•Japanese education

According to the student's level, there are 11 classes from beginners' to advanced level. The course runs for one year, and students can learn with a small number of foreign students.

•Special subjects

The basic knowledge about Japanese culture, education and the special research for the students own subject

Japanese circumstance	: Japanese culture, society and nature. (only for program students)
Japanese education	: Education in the school and long life. (only for program students)
Field research and practice	: Guidance of school and experience of the field research. (only for program students)
Special research	: Research of your own field with instruction of the supervisor.

•Final report

Students should write the report on the book of "Teacher training student program annual report".

•In addition

Teacher training course students can take lectures of almost all lessons according to their Japanese capability.

Students can pursue their individual study under the supervising professor, and tutor of the Japanese students will help with their research activities.

◇Housing

Students should live in the international student house of Tohoku University. See(<http://www.bureau.tohoku.ac.jp/kokusai/exchangej/hallj/index.html>)(<http://www.bureau.tohoku.ac.jp/manabi/manabi12/mm12-8.htm>).

In the case of No Room Available , Students should live in the Tohoku University dormitory run by a private company.

Be informed that stay duration of the international student house of Tohoku University is limited by 1 year and students should find a place to live by themselves. for a final half year.

◇Inquiry

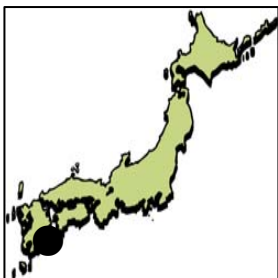
Address: Aramaki aza Aoba, Aobaku Sendai City, Japan 9800845
International Student Section, Miyagi University of Education
Phone: +81-22-214-3654
FAX: +81-22-214-3621
E-mail: ryugaku@adm.miyakyou.ac.jp
Home page: <http://www.miyakyo-u.ac.jp/>
<http://www1.miyakyou.ac.jp/archive/eng.html>

Fields of Studies and number of students admitted

Course	Name	E-MAIL Address (@staff.miyakyo-u.ac.jp)	Teaching Field(s)	Number of Students Admitted	Acceptance record ('06 - '10)	
					Number of Acceptance	Country
Japanese Education	Prof. Hitoshi Endo	h-endo2@staff.miyakyo-u.ac.jp	Science of the Japanese Language	Seven in the whole university	2	China
	Prof. Hideo Aizawa	aizawa@staff.miyakyo-u.ac.jp	Japanese Education		3	China, Korea
	Prof. Yukiko Kojima	y-koji@staff.miyakyo-u.ac.jp	Japanese Literature		1	China
	Prof. Tetsuo Shimamori	t-shima@staff.miyakyo-u.ac.jp	Chinese Literature and Asian Culture		0	
	Prof. Aya Nakachi	nakachi@staff.miyakyo-u.ac.jp	Juvenile Literature		1	China
	Prof. Yoshio Watanabe	y-wata@staff.miyakyo-u.ac.jp	Japanese Modern Literature		0	
	Assoc. Prof. Miwako Oda	moda@staff.miyakyo-u.ac.jp	Chinese Literature and Chinese Culture		12	China, Korea, Vietnam, Mongolia, USA
Social Studies Education	Prof. Kayoko Kondo	k-kondo@staff.miyakyo-u.ac.jp	History of Japanese Laws		0	
	Prof. Hitoshi Kanno	kanno@staff.miyakyo-u.ac.jp	Sociology		2	China
	Prof. Takaaki Koganezawa	t-koga@staff.miyakyo-u.ac.jp	Human Geography		2	Korea, Mongolia
	Prof. Kiyoshi Saijo	saijo@staff.miyakyo-u.ac.jp	Physical Geography		7	China, Myanmar
	Prof. Hiroshi Takeuchi	h-take2@staff.miyakyo-u.ac.jp	History of Economics		0	
	Prof. Hisatoshi Matsuoka	matsuoka@staff.miyakyo-u.ac.jp	Social Studies Education		1	China
	Assoc. Prof. Miki Iyanagi	iyanagi@staff.miyakyo-u.ac.jp	Political Science, History of Political Thought		3	China, Mongolia
	Assoc. Prof. Keiko Hakota	keihako@staff.miyakyo-u.ac.jp	Modern Chinese History		0	
	Assoc. Prof. Yuki Yoshi Hotta	y-hotta@staff.miyakyo-u.ac.jp	Japanese Modern History		2	China, Mongolia
	Assoc. Prof. Tsuyoshi Yoshida	yoshida@staff.miyakyo-u.ac.jp	Social Studies Class Management theory		2	China
Mathematics Education	Prof. Haruki Yamada	h-yama1@staff.miyakyo-u.ac.jp	Analysis		0	
	Prof. Hitoshi Uryu	h-uri@staff.miyakyo-u.ac.jp	Analysis		0	
	Prof. Koichi Takase	k-taka2@staff.miyakyo-u.ac.jp	Automorphic Forms and Representation Theory of Lie Groups		0	
	Prof. Teruhiko Tabata	teruhiko@staff.miyakyo-u.ac.jp	Mathematics Education		0	
	Prof. Masaomi Morioka	m-mori1@staff.miyakyo-u.ac.jp	Educational Engineering, Mathematical Logics		0	
	Assoc. Prof. Hiroyuki Kamata	hkamada@staff.miyakyo-u.ac.jp	Differential Geometry		0	
	Assoc. Prof. Hisao Taya	taya@staff.miyakyo-u.ac.jp	Algebraic Number Theory		0	
Science Education	Prof. Eiji Nagata	e-naga@staff.miyakyo-u.ac.jp	Science Education		0	
	Prof. Takeshi Ikeyama	t-ike@staff.miyakyo-u.ac.jp	Physical Chemistry, Molecule Part Optics		0	
	Prof. Kimiharu Ishizawa	kimiharu@staff.miyakyo-u.ac.jp	Biology		0	
	Prof. Toshiro Kawamura	t-kawa@staff.miyakyo-u.ac.jp	Stratigraphy, Deposition Geology.		0	
	Prof. Hideyuki Sawatari	sawatari@staff.miyakyo-u.ac.jp	Analytical chemistry, geochemistry		0	
	Prof. Yoshiko Takada	toshiko@staff.miyakyo-u.ac.jp	Planet science		0	
	Prof. Ken'ichi Tabata	k-tabata@staff.miyakyo-u.ac.jp	Science Pedagogy		0	
	Prof. Yoichi Tamaki	y-tama@staff.miyakyo-u.ac.jp	Radiochemistry, Inorganic Analytical Chemistry		0	
	Prof. Yoshiaki Chiba	y-chiba@staff.miyakyo-u.ac.jp	Condensed Matter Physics Study, Physical Education		0	
	Prof. Yoshiyuki Fukuda	fukuda@staff.miyakyo-u.ac.jp	Elementary particle physics (neutrino physics)		0	Mongolia
	Assoc. Prof. Tetsuji Uchiyama	tetsu-u@staff.miyakyo-u.ac.jp	Superconductivity, Thin Films, Educational Simulation Softwares		0	

Course	Name	E-MAIL Address (@staff.miyakyo-u.ac.jp)	Teaching Field(s)	Number of Students Admitted	Acceptance record ('06 - '10)	
					Number of Acceptance	Country
Science Education	Assc. Prof. Kayoko Kasai	kasai@staff.miyakyo-u.ac.jp	Organic metal complex chemistry	Seven in the whole university	0	
	Assc. Prof. Satoshi Sugawara	sugawara@staff.miyakyo-u.ac.jp	Aerology		0	
	Assc. Prof. Ryusaku Deguchi	deguchi@staff.miyakyo-u.ac.jp	Animal embryology, cell physiology		0	
	Assc. Prof. Arimune Munakata	munakata@staff.miyakyo-u.ac.jp	Animal action physiology		0	
Music Education	Prof. Kazuo Kikkawa	k-kikka@staff.miyakyo-u.ac.jp	Composition		0	
	Prof. Keiko Owa	owa@staff.miyakyo-u.ac.jp	Singing		1	China
	Assc. Prof. Satomi Oshio	oshio@staff.miyakyo-u.ac.jp	Musicology		1	Mongolia
	Assc. Prof. Teru Kurato	teru@staff.miyakyo-u.ac.jp	Keyboard		2	China,Poland
	Assc. Prof. Hiroyuki Harada	harada@staff.miyakyo-u.ac.jp	Vocal Music, Chorus		6	China,Momgolia,Poland
Art Education	Prof. Haruyuki Asano	h-asa@staff.miyakyo-u.ac.jp	Craft (ceramic art)		2	China
	Prof. Masahiko Katsura	m-katsu@staff.miyakyo-u.ac.jp	Design (product, graphics, and space)	2	China, Korea	
	Prof. Keiichi Tachihara	tatihara@staff.miyakyo-u.ac.jp	Fine arts, Art Education	2	China, Korea	
	Prof. Hideki Nitta	h-nitta@staff.miyakyo-u.ac.jp	Fine Arts Theory, History of Fine Arts	1	China	
	Assc. Prof. Fumihira Abiko	fumihira@staff.miyakyo-u.ac.jp	Painting, Picture	1	China	
	Assc. Prof. Yutaka Torao	tora@staff.miyakyo-u.ac.jp	Sculpture	9	Italy	
	Assc. Prof. Kiyoshi Hirakakiuchi	k-hira@staff.miyakyo-u.ac.jp	Paintings, Woodprints, Media Art	3	China	
	Assc. Prof. Takashi Murakami	murataka@staff.miyakyo-u.ac.jp	Art Education, Project-type Art Activities	5	China	
Health and Physical Education	Prof. Mariko Satomi	m-sato@staff.miyakyo-u.ac.jp	Body Expression, Gymnastics	0		
	Prof. Jun'ichi Maeda	i-mae@staff.miyakyo-u.ac.jp	Movement Physiology (Minute Circulation)	0		
	Assc. Prof. Koichi Ikeda	k-ikeda@staff.miyakyo-u.ac.jp	Movement Method Study, Biomechanics	0		
	Assc. Prof. Hidetoshi Kinoshita	h-kino@staff.miyakyo-u.ac.jp	Theory of Sport Movement and Behavior, Theory and Practice of Artistic Gymnastics	0		
	Assc. Prof. Tetsuya Kurokawa	kurokawa@staff.miyakyo-u.ac.jp	Pedagogy of Physical Education, Curriculum Assessment in Physical Education, Sports Literacy	0		
Domestic Science	Prof. Yoshiro Kamata	y-kama@staff.miyakyo-u.ac.jp	Food Science	0		
	Prof. Shigekazu Nishikawa	nishika@staff.miyakyo-u.ac.jp	Clothing	0		
	Assc. Prof. Yasuko Onodera	t-dera@staff.miyakyo-u.ac.jp	Study and Development of Teaching Materials	0		
	Assc.Prof. Aya Kamei	kamei@staff.miyakyo-u.ac.jp	Dietary Fiber	0		
	Assc. Prof. Masanori Sugawara	msugawa@staff.miyakyo-u.ac.jp	Housing Study (Construction Environmental Engineering)	0		
	Assc. Prof. Michiko Horiguchi	horiguchi@staff.miyakyo-u.ac.jp	Family Relationship Studies,Childcare Studies	0		
Technology Education	Prof. Masaaki Oka	maoka@staff.miyakyo-u.ac.jp	Crop study, vegetable breeding study	0		
	Prof. Hiraku Abiko	abiko@staff.miyakyo-u.ac.jp	Technical Education	0		
	Prof. Motohisa Ono	m-ono@staff.miyakyo-u.ac.jp	Machining	0		
	Prof. Kiyonobu Kusano	k-kusa@staff.miyakyo-u.ac.jp	Communication Engineering (Fiber Optic Communications)	0		
	Prof. Yoshinari Mizutani	mizu@staff.miyakyo-u.ac.jp	Electricity and electronics (living body information measurement engineering)	0		
	Assc. Prof. Akinobu Ando	andy@staff.miyakyo-u.ac.jp	Department education of technology	0		

Course	Name	E-MAIL Address (@staff.miyakyo-u.ac.jp)	Teaching Field(s)	Number of Students Admitted	Acceptance record ('06 - '10)	
					Number of Acceptance	Country
English Education	Prof. Nobuya Itagaki	n-ita@staff.miyakyo-u.ac.jp	Psycholinguistics, English Education	Seven in the whole university	8	China, Mongolia, Thailand, Laos, Vietnam,Bangladesh,Hondulas
	Prof. Kazutake Sugawara	k-suga@staff.miyakyo-u.ac.jp	Germanic Linguistics		0	
	Prof. Kiyoshi Takahashi	k-taka3@staff.miyakyo-u.ac.jp	English Semantics, Progmatics, Syntax, Linguistics		1	Vietnam
	Prof. Hiroshi Fujita	h-fuji@staff.miyakyo-u.ac.jp	English Literature		2	China, Korea
	Assc. Prof. Tetsuo Nishihara	nishihara@staff.miyakyo-u.ac.jp	English Phonetics, English Phonology, Morphology		1	China
Infant Education	Prof. Junko Ito	junko@staff.miyakyo-u.ac.jp	Infant Psychology		2	China
Special Needs Education	Prof. Yoshinori Murakami	murakami@staff.miyakyo-u.ac.jp	Movement Obstacle Study (Chronic-disease Child Psychology, Health Psychology)		0	
	Prof. Shigemi Aoki	s-aoki@staff.miyakyo-u.ac.jp	Visual-impairment Education		0	
	Prof. Mari Inohira	m-ino@staff.miyakyo-u.ac.jp	Visual-impairment Child Education		1	China
	Prof. Hiroyuki Sugai	sugai@staff.miyakyo-u.ac.jp	Communication Obstacle Study		0	
	Prof. Hirohisa Sekiguchi	hiroseki@staff.miyakyo-u.ac.jp	Juvenile Psychiatry		0	
	Prof. Shigeru Nakai	s-naka@staff.miyakyo-u.ac.jp	Movement Obstacle Study		0	
	Prof. Shota Fujishima	s-fuji@staff.miyakyo-u.ac.jp	Hearing handicapped-child Psychology		1	China
	Prof. Toru Watanabe	t-wata2@staff.miyakyo-u.ac.jp	Education of Physically and Mentally-handicapped Children Study		1	China
	Assc. Prof. Nobuyuki Nagai	nagai@staff.miyakyo-u.ac.jp	Visual Impairment		0	
	Assc. Prof. Jo Matsuzaki	joemk@staff.miyakyo-u.ac.jp	Education for Auditory Impairment		0	
School Education	Prof. Kenji Kasama	k-kasa@staff.miyakyo-u.ac.jp	History of Japanese Education		1	Philippines
	Prof. Osamu Miyamae	miyamae@staff.miyakyo-u.ac.jp	Clinical psychology , Psychotherapy		0	
	Assc. Prof. Makio Taira	m-taira@staff.miyakyo-u.ac.jp	Educational Psychology		0	
	Assc. Prof. Taketo Tabata	tabata-t@staff.miyakyo-u.ac.jp	Educational Method Study		2	USA,China
	Assc. Prof. Yutaro Nashimoto	y-nashi@staff.miyakyo-u.ac.jp	Social Education, Lifelong Learning Theory		2	China
	Assc. Prof. Manami Honzu	mhonzu@staff.miyakyo-u.ac.jp	Educational Administration Study		2	China
	Assc. Prof. Junya Kubo	kuboi@staff.miyakyo-u.ac.jp	Educational Psychology		0	
Environmental Education Center	Prof. Yoshihiro Ugawa	ugawa@staff.miyakyo-u.ac.jp	Living Thing Information Science		3	China
	Prof. Chiemi Saito	csaito@staff.miyakyo-u.ac.jp	Preservation Biology		0	
	Prof. Takashi Muramatsu	t-mura@staff.miyakyo-u.ac.jp	Organic Physical Chemistry		2	China
	Assc. Prof. Tomoyuki Shimano	satoshis@staff.miyakyo-u.ac.jp	Environmental Education Practice		0	
	Assc.Prof. Koji Mizota	mizota@staff.miyakyo-u.ac.jp	Entomolpgy,Enviromental Education		0	
Center for Clinic in Education	Prof. Akinobu Honma	a-hon@staff.miyakyo-u.ac.jp	Study of Instruction		1	Korea
	Assc. Prof. Toshiyuki Yoshimura	t-yo@staff.miyakyo-u.ac.jp	Educational Method Study		2	China, Korea
Special Needs Education Research Center	Prof. Shizuka Sato	shizuka@staff.miyakyo-u.ac.jp	Clinical Psychology		0	
	Prof. Kazuto Noguchi	noguchi@staff.miyakyo-u.ac.jp	Handicapped-child Psychology		3	China, Philippines
Research Center for Education in International Understanding	Prof. Tomonori Ichinose	ichinose@staff.miyakyo-u.ac.jp	Japanese Language and a Japanese Situation		31	China, Korea, Vietnam, Mongolia, Thailand, Indonesia, Australia, Italy, Russia,Uzbekistan
	Assc. Prof. Akiko Takahashi	akiko12@staff.miyakyo-u.ac.jp	Japanese Language Education		26	China, Korea, Thailand, Indonesia, Italy, USA, Latvia, Estonia,Uzbekistan,Chili



University of Miyazaki (Miyazaki Prefecture)



The trainees mainly take classes of their major, while doing a teaching practice at University kindergarten, elementary school, or junior high school. In this way they can have an opportunity to experience directly how the Japanese education system works.

◇ University overview

University of Miyazaki is a national university which consists of four faculties (Education & Culture, Medicine, Engineering and Agriculture) and six graduate schools attached to each faculty.

○ Divisions and Departments

- ◇ Education & Culture (Divisions): Teacher Training, Humanities and Social Sciences
- ◇ Medicine (Schools): Medicine, Nursing.
- ◇ Engineering (Departments): Applied Physics, Applied Chemistry, Electrical and Electronic Engineering, Civil and Environmental Engineering, Mechanical Systems Engineering, Computer Science and Systems Engineering.
- ◇ Agriculture (Departments): Agricultural and Environmental Sciences, Forest and Environmental Sciences, Biochemistry and Applied Biosciences, Marine Biological and Environmental Science, Animal and Grassland Sciences, Veterinary Sciences

○ University Facilities: Cooperative Research Center, Center for Educational Research and University – Community Relations, Frontier Science Research Center, Center for International Relations, etc.

○ Number of teachers and students

- ◇ undergrads: 4,842 ◇ graduates: 703
- ◇ teachers: 671 ◇ officials: 745

○ International students: 118 (18 countries)

○ Number of Teacher Training students: We have so far accepted 3 students by this program.

◇ Outline of the courses for Teacher Training students

○ Characteristics of the program

Taking a student's Japanese language ability into consideration, the University offers two kinds of subject:

- (a) Classes in major subjects are chosen by the students under the guidance of their advisors. Students will have opportunities to visit elementary and secondary schools and to take part in some cultural exchange activities with pupils at these schools.
- (b) Japanese language classes appropriate to the ability of the student will be taken.
- (c) The trainees mainly take classes of their major, while doing a teaching practice at University kindergarten, elementary school, or junior high school. In this way they can have an opportunity to experience directly how the Japanese education system works.

○ Number of students accepted: no more than 3

○ Outline of the course

After arriving in Japan, students receive Japanese language education for six months at another institution before the in-service teacher training program, as explained below, starts at University of Miyazaki.

- (a) Japanese Language education
 - * Intermediate Japanese I~VI
 - * Advanced Japanese I~IV
 - * Japanese Culture I~VI
 - * Tutoring will be provided if necessary
- (b) Specialized training
 - * Major subject classes are chosen under the guidance of an advisor. A research plan will also be made with the help of an advisor.
- (c) Class hours: 15 classes per semester (30 hours)
- (d) Field Trips and Events: Observation tour, etc.

◇ Accommodations

<Dormitory>

Men's dorm 100 rooms, Women's dorm 100 rooms

<International House>

Singles = 167 rooms

Couple & Families = 8 rooms

<Boarding fee>

Single = 4700yen,

Couple = 9500yen, Families = 14200yen

<Equipment>

Each room has a bed, a desk, a chair and a closet.
A kitchen, shower room and washing room are provided for the common use.

<Vicinity of the dorm>

Supermarket, Convenience store, Restaurant, etc.
The dorms are on *Kibana Campus*.

◇ For further information, contact:

Global Support Office, University of Miyazaki

1-1 Nishi Gakuen Kibana-dai

Miyazaki 889-2192 JAPAN

TEL: +81-985-58-7134

FAX: +81-985-58-7782

E-mail: ryugaku@of.miyazaki-u.ac.jp

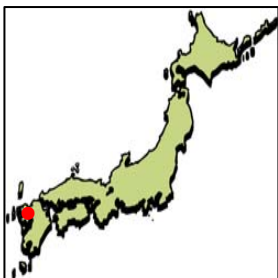
HP: <http://www.miyazaki-u.ac.jp/>

Syllabus:

<http://www.of.miyazaki-u.ac.jp/gakumu/>

◇ Course Description, Number of students to be accepted, Qualifications and, etc.

Graduate School of Education					
Name of Adviser	E-mail	Teaching Field(s)	Course Description	Number of students to be accepted	Qualification and Requirement for students. Number of students in past 5 years.
Rumiko Takahashi Associate Professor	e07142u@cc.miyazaki-u.ac.jp	Physical Education	Dancing as a basic means of Education	1	A conversation ability in Japanese / An interest in Dancing
Kazumi Shraishi Associate Professor	e0a105u@cc.miyazaki-u.ac.jp	Japanese Literature	Mainly modrn Japanese novels	1	Advamced level of japanese/ An interest in Japanese culture
Toshi hiro Yamada Professor	t-yamada@cc.miyazaki-u.ac.jp	Japanese Literature	Mainly Classical Japanese literature	1	Japanese language ability good enough to understand traditional Japanese literature/ An interst in Japanese traditional culture
Shigemi Takei Professor	e05102u@cc.miyazaki-u.ac.jp	Music Education	Music Education: theory and practice	1	A conversation ability in Japanese/ Basic music skills
Suehiro Ando Professor	ando-s@cc.miyazaki-u.ac.jp	Handicapped Children Psychology	Views on handicap and treatment education	1	A conversation ability in Japanese or English/ Engaged in education of physically and mentally handicapped infants and children
Shin Tatsumoto Associate Professor	s-tatsu@cc.miyazaki-u.ac.jp	Psychology	Mental development of infants	1	A conversation ability in Japanese/ Fundamentals of psychology and childcare
Ryukichi Shinada Professor	shinada@cc.miyazaki-u.ac.jp	Physical Education	Physical Education	1	A conversation ability in Japanese
Toshitaka Iwamoto Professor	iwamot.t@cc.miyazaki-u.ac.jp	Biology	System of animal world	1	A conversation ability in Japanese or English/ Majoring in Biology
Hayashi Nakayama Professor	e04502u@cc.miyazaki-u.ac.jp	Science Education	Basic philosophy of science education	1	A conversation ability in Japanese or English/ Majoring in Science Education
Yoshie Fukuhara Professor	e09107u@cc.miyazaki-u.ac.jp	Home Economics Education	Some problems and research model of home tr	1	A conversation ability in Japanese/ Ambitious to become a teacher
Hisae Shinohara Associate Professor	e09102u@cc.miyazaki-u.ac.jp	Study of Food	Sociological, cultural, historical and physiological viewpoint of human birth	1	A conversation ability in Japanese



Nagasaki University



The faculty of education offers on-the-job training and practical assistance, for students to acquire a range of educational knowledge and skills necessary in classrooms or teaching realities.

◇Introduction to the University

○Outline of the University

Nagasaki University consists of the Faculties of Education, Economics, Medicine, Dentistry, Pharmaceutical Sciences, Engineering, Environmental Studies, and Fisheries. There are about 90 teachers in the Faculty of Education specialized in Japanese, Social Studies, Mathematics, Natural Sciences, Music, Art, Health and Physical Education, Technology, Home Economics, English, Educational Science, Educational Psychology, Education for Handicapped Children, and Early Childhood Care and Education. An elementary school, a lower secondary school, a school for children with special education needs, and a kindergarten are also affiliated. The international students can visit those facilities to observe how children are educated at Japanese schools.

○International Exchange

•Number of International students:

7654 undergraduate students and 1430 graduate students are currently enrolled in the University. In the Faculty of Education there are 1017 undergraduate students and 72 graduate students. The international students are 365 of which 24 students are enrolled in the Faculty of Education.

•Accomplishment

Nagasaki University has academic exchange programs with many overseas universities and is very active in research and student activities. There are 104 exchange programs which include such universities as National University of Singapore, Pukyong National University, Chiang Mai University, China Pharmaceutical University, Leiden University, Cheju National University, and Kyungpook National University. The total of 16 students has been enrolled in this program in the past 10 years, and their origins include various countries such as South Korea, the Philippines, Myanmar, Thailand, Indonesia, Mexico, Paraguay and Saudi Arabia.

◇Outline of the program

○Characteristics of the program

The Committee for International Students was established with the cooperation of all members of the Faculty of Education. It aims to help international students' study or research progress successfully. It provides students with activities such as parties and fieldwork and makes efforts to meet students' everyday needs so that they can have a comfortable environment to pursue their interests.

○Number of students

Number of students: 8

○Outline of the program

① Japanese Language (2011.10~2012.3)

a) Course

Students are to study the Japanese language for six months at the International Student Center.

b) Supplementary course

It is given as 20 hours per week at the International Student Center according to each student's Japanese comprehension ability.

② Academic training (2012.4~2013.3)

a) According to each student's

Specialized subject, one or more faculty members will supervise him/her. The student will take seminars and lectures for a year under the supervision of the professor(s). The student must submit a thesis (written in Japanese or English) at the end of the course.

b) Guidance in English

The student may be supervised in English if he/she wishes.

◇Accommodation

International House Nishimachi Main Building, Building A and Building B and Sakamoto International House are four dormitories for international students in Nagasaki University. When there is no vacancy, students need to rent private apartment rooms.

Here is the number of rooms for international students.

○ The Number of Rooms

-Single room 77rooms

-Couple room 4 rooms

-Family room 4 rooms

-Four Bed Rooms 21rooms

○ Rent

-Room for single 8,177yen~17,600yen

-Room for couple 23,000yen~35,000yen

-Room for family 39,000yen~44,000yen

-Four Bed Rooms 19,275yen (per person)

○ Equipments /Furnishings

Air conditioner, bed, desk, chair, wardrobe, reading lamp, refrigerator, shower, toilet, laundry room (common use), dining room (common use)

○ Information for Daily Life and Commute Time

It takes 20 minutes to walk from university campus to International House. It locates in the quiet neighborhood and housing for government workers is also located in same property. Sakamoto International House locates in university hospital. It takes a few minutes on foot from Sakamoto International House to Medical department and department of Dentistry. There is a shopping center around Sakamoto area but it takes 30 minutes to main campus by a streetcar.

◇For further information, please contact:

International Exchange Division

Research Promotion and International

Affairs Department Nagasaki University

1-14 Bunkyo-machi, Nagasaki 852-8521, Japan

TEL: 095-819-2237 FAX: 095-819-2125

e-mail: ryugaku@ml.nagasaki-u.ac.jp

Web: <http://www.nagasaki-u.ac.jp/>

Nagasaki University

CourseDescription and Terms of Admission

Graduate School of Education					
Name of Adviser (Official Position)	e-mail address	Teaching Field(s)	Course Description	Number of students to be accepted	Terms of admission and Number of students accepted in the past 5 years
Takashi KATSUMATA (Professor)	katumata@nagasaki-u.ac.jp	Japanese Education	Japanese Literature (Classic Literature)	1	
Tateo YAMAMOTO (Professor)	yamamoto@nagasaki-u.ac.jp	Japanese Education	Japanese Education	1	
Keiko SUZUKI (Professor)	keiko-s@nagasaki-u.ac.jp	Japanese Education	Syodo Education	1	
Takana NAKAJIMA (Associate Professor)	takanan@nagasaki-u.ac.jp	Japanese Education	Japanese Literature (Literature Written by Chinese Classics)	1	
Masatake HIRASE (Associate Professor)	masa-i@nagasaki-u.ac.jp	Japanese Education	Japanese Education	1	
Ken-ichi HORII (Professor)	horii@nagasaki-u.ac.jp	History of Ancient Europe	History of Classical Athens	1	Conducted in English
Shinji NAGAOKA (Professor)	shin@nagasaki-u.ac.jp	Geography	Geomorphology and Quaternary Geology	1	Conducted in English
Seiji NAGATA (Professor)	seiji@nagasaki-u.ac.jp	Economics	Economic Theory or Mathematical Economics	1	
Tomoyoshi IIZUKA (Professor)	iizuka@nagasaki-u.ac.jp	Western Philosophy , Ethics	Problems of Philosophy and Ethics	1	
Masahiro FUKUDA (Professor)	fukuda@nagasaki-u.ac.jp	Social Studies Education	Development of Social Understanding	1	
Masayuki TANIGAWA (Professor)	tanigawa@nagasaki-u.ac.jp	Political Science	History of Political Thought	1	Conducted in English
Maki FUKUTOME (Associate Professor)	fukutome@nagasaki-u.ac.jp	History of Japan	Political history at Japanese the early modern age	1	
Shunji ABE (Assistant Professor)	abe-s@nagasaki-u.ac.jp	Politics	Japanese Life History	1	
Yuichi KITAMURA (Professor)	yu-kita@nagasaki-u.ac.jp	Mathematics	Analysis	1	Conducted in English
Hiroshi KAJIMOTO (Professor)	kajimoto@nagasaki-u.ac.jp	Mathematics	Geometry		
Kenji HIRAOKA (Professor)	khiraoka@nagasaki-u.ac.jp	Mathematics Education	Mathematics Education		
Kaori MIYAUCHI (Associate Professor)	mkaori@nagasaki-u.ac.jp	Mathematics Education	Mathematics Education	1	Conducted in English
Byungdug JUN (Professor)	bdjun@nagasaki-u.ac.jp	Web Information System	GIS by WebGIS	1	Conducted in English
Chiaki NAKAMURA (Associate Professor)	sonny@i.edu.nagasaki-u.ac.jp	Computer and Network System	Construction of Computer System for Education		
Masao KOGA (Professor)	m-koga@nagasaki-u.ac.jp	Physics, Physics Education	Physics Education, Solid State Physics	1	Conducted in English, Peru 1
Hirofumi MORISHITA (Professor)	morisita@nagasaki-u.ac.jp	Chemistry	Organic Chemistry	1	

Name of Adviser (Official Position)	e-mail address	Teaching Field(s)	Course Description	Number of students to be accepted	Terms of admission and Number of students accepted in the past 5 years
Yoshimasa HOSHINO (Professor)	koshino@nagasaki-u.ac.jp	Chemistry	Inorganic Chemistry Analytical Chemistry	1	Conducted in English
Hiroki NAKANISHI (Professor)	hiro-nak@nagasaki-u.ac.jp	Biology	Botany	1	Conducted in English
Hiroshi KONDO (Professor)	kondo-h@nagasaki-u.ac.jp	Geology	Organic Geochemistry	1	Conducted in English
Masahiro NAGASHIMA (Associate Professor)	masahiro@nagasaki-u.ac.jp	Astronomy	Astronomy, Astrophysics	1	Conducted in English
Tateo HASHIMOTO (Professor)	hasimoto@nagasaki-u.ac.jp	Science Education, Environmental Education	Science Education, Environmental Education	1	Conducted in English, Philippines 1
Hiroaki YAMAJI (Professor)	yamaji@nagasaki-u.ac.jp	Science Education	Science Education	1	
Noriyuki TOMIYAMA (Professor)	smilax@nagasaki-u.ac.jp	Science Education	Science Education	1	
Akifumi FUKUI (Professor)	a-fukui@nagasaki-u.ac.jp	Music Education	Study of music education	1	
Ibuki HORIUCHI (Professor)	horiuchi@nagasaki-u.ac.jp	Pianoforte playing	Basic principles in pianoforte playing	1	
Jiro MIKAMI (Professor)	mikami@nagasaki-u.ac.jp	Composition	Study of harmonistic theory	1	
Shigeru MIYASHITA (Associate Professor)	miyamo@nagasaki-u.ac.jp	Vocal Music	Vocal Music	1	
Akiko KANO (Associate Professor)	k-akiko@nagasaki-u.ac.jp	Violin Playing	Expression of violin playing	1	
Keisuke SATO (Professor)	keisuke@nagasaki-u.ac.jp	Sculpture	Sculpture (Art Education)	1	
Michito ODA (Professor)	m-oda@nagasaki-u.ac.jp	Design	3-D Constructive Art (Art Education)	1	
Tohru NAKAGAWA (Associate Professor)	nakagawa@nagasaki-u.ac.jp	Art Education	Art Education	1	
Hiroyuki KANNO (Associate Professor)	kankan@nagasaki-u.ac.jp	Ceramic	Researching nature of art by ceramic	1	
Aya HARIKAI (Associate Professor)	aharikai@nagasaki-u.ac.jp	Art Education	History of Art	1	
Masashi SUGAWARA (Professor)	augahara@nagasaki-u.ac.jp	Health Science	Exercise Physiology & Public Health	1	Conducted in English
Sho NISHIZAWA (Professor)	nishisho@nagasaki-u.ac.jp	Health related Fitness	Research in Health and Physical Education	2	Conducted in English
Masaki YAMAUCHI (Professor)	yamauchi@nagasaki-u.ac.jp	Psychology of Physical Education	Sports Psychology & Motor learning	1	Conducted in English
Takayuki HATA (Professor)	hata@nagasaki-u.ac.jp	Sport and Physical Education	Philosophy of Sport and Physical Education	1	Conducted in English or German
Yoshio FURUYA (Professor)	yhuruya@nagasaki-u.ac.jp	Material Science	Material Research and its Application	1	Conducted in English
Takashi FUJIKI (Professor)	t-fujiki@nagasaki-u.ac.jp	Distance Education, Technology Education	Distance Education and Technology Education	1	Conducted in English
Noboru FUJIMOTO (Associate Professor)	n-fuji@nagasaki-u.ac.jp	Environmental and Mechanical Technology Education	Environmental and Mechanical Technology and teaching method	1	

Name of Adviser (Official Position)	e-mail address	Teaching Field(s)	Course Description	Number of students to be accepted	Terms of admission and Number of students accepted in the past 5 years
Mayumi AKASAKI (Professor)	akasaki@nagasaki-u.ac.jp	Home economics	Home economics Education	1	Conducted in English
Yoshitugu SASANO (Associate Professor)	y-sasano@nagasaki-u.ac.jp	Home economics	Housing		
Nobuko NGANGA (Professor)	tnobuko@nagasaki-u.ac.jp	Household Economics	Food Consumption	1	Conducted in English
Mika IJIMA (Associate Professor)	m-ijima@nagasaki-u.ac.jp	Textile Materials	Polymer Physics	1	Conducted in English
Daichi OIKAWA (Associate Professor)	daichioi@nagasaki-u.ac.jp	Food Function	Lipid Nutrition	1	Conducted in English
Ichiro INOUE (Professor)	inoue@nagasaki-u.ac.jp	American Literature	Modern American Literature	1	
Koh-ichi MATSUMOTO (Professor)	kmats@nagasaki-u.ac.jp	English Linguistics	Syntax		
Toshiya IKEDA (Associate Professor)	t-ikeda@nagasaki-u.ac.jp	British Literature	Modern British literature		
Itsuro INAGE (Professor)	inage@nagasaki-u.ac.jp	English Language Teaching	English Language Teaching		
Kohtaro KAMIZONO (Professor)	kamizono@nagasaki-u.ac.jp	Moral Education	Moral Education	1	Philippines 1 (KAMIZONO) Mexico 1 (INOKUCHI) Myanmar 2 (GOYA)
Yasunori YANAGIDA (Professor)	yasunori@nagasaki-u.ac.jp	Educational Sociology	Educational Sociology		
Hitoshi INOKUCHI (Professor)	hitoshi@nagasaki-u.ac.jp	Preschool Education	Preschool Education		
Katsumasa HIRATA (Professor)	hirata@nagasaki-u.ac.jp	Education for Children with Disabilities	Education for Children with Disabilities		
Yasumi SUZUKI (Associate Professor)	ys11@nagasaki-u.ac.jp	Psychophysiology of Children with Disabilities	Psychophysiology of Children with Disabilities		
Hiroshi GOYA (Associate Professor)	goya@nagasaki-u.ac.jp	Pedagogy, Science Education	Pedagogy, Science Education		
Ryuutarō SASAYAMA (Associate Professor)	sasayama@nagasaki-u.ac.jp	Education for Children with Disabilities	Special Needs Education		
Ken KUSUYAMA (Assistant Professor)	kusuyama@nagasaki-u.ac.jp	Educational System	Educational System, Schooling System		
Junji HARADA (Professor)	harada@nagasaki-u.ac.jp	Educational Social Psychology	Educational Psychology, Social Psychology	1	
Tatsuro OBARA (Professor)	labo@nagasaki-u.ac.jp	Physical Education	Child Science	1	
Kousuke TERASHIMA (Associate Professor)	k-tera@nagasaki-u.ac.jp	Educational Technology	Media Education	1	Conducted in English, Philippines 1, El Salvador 1