

KUMAMOTO UNIVERSITY (KUMAMOTO)

In order to facilitate the transfer of your credits to your home university, Kumamoto University gives credits for all Japanese courses. You have many opportunities to learn more about the Japanese language and culture through various activities inside and outside of the university.

Introduction to Kumamoto University

University Overview

State-run Kumamoto University was established in May 1949 incorporating several institutions, including The Fifth High School and Kumamoto Medical College. Now, it has 7 undergraduate and 8 graduate schools. There are about 10,000 undergraduate students, as well as approximately 2,100 teaching staff and officials.

Faculty and Graduate Schools

Faculties: Letters (Literature), Education, Law, Sciences, Medicine, Pharmaceutical Sciences and Engineering

Graduate Schools: Education, Social and Cultural Science, Science and Technology, Medicine, Pharmaceutical Sciences, and Health Science. There is also a separate School of Law established in 2004.

International Exchanges

Number of International Students

As for October 1, 2008, there are 322 students from 40 countries studying at Kumamoto University.

The number of students recently admitted to the program 2008: 1 (USA), 2007: 1 (Korea), 2006: 1 (USA)

As of October 1, 2008, Kumamoto University has established international exchange agreements with 76 colleges, universities, and institutions in 23 countries.

Kumamoto Overview

Kumamoto University is located in the central area of Kyushu Island in southern Japan. Mt. Aso, which is located in the eastern part of Kumamoto Prefecture, is famous for having the largest caldera volcano in the world.



Main Campus

Characteristics of the Program

Number of students to be accepted

Literature: 2-3, Japanese Language, Teaching of Japanese: 2-3, Japanese Culture, Geography, History, Folklore, Sociology etc.: 3-4, Law, Politics, Economics: 1-2

Duration of the program: October 1, 2009 – September 30, 2010 (includes period for preparing an academic paper)

Course Outline: Students in the Japanese Studies Program are placed into Japanese classes according to the following system:

Level 3: Lower-Intermediate (for those who have studied Japanese for around 300 hours)

Level 4: Upper-Intermediate (for those who have studied Japanese for around 450 hours)

Level 5: Lower-Advanced (for those who have studied Japanese for around 600 hours)

Level 6: Upper-Advanced (for those who have studied Japanese for around 900 hours)

Students will be placed into the appropriate classes based on an interview and the result of their placement test. For more information on each class, please look at "Course Descriptions".

Under the guidance of their academic advisor, students study the specific topics they have an interest in. At the end of the course, each student is asked to submit an academic paper to be published in the "Nihongo Nihonbunka Kenshu Report" put out by Kumamoto University.

Subject and Content: Please refer to the attached sheet (all the courses you take will be open to Japanese students)

Support: Faculty members will give students some advice in person regarding academic affairs and life.

Prerequisite for Course Completion: Students who have completed at least 10 credits during each of the fall and spring terms and have submitted a study report will receive a "Certificate of Completion."

Approval of Class Credits: Credits for classes completed by students will be approved by the faculty of the representative academic department each student belongs to. Academic transcripts will then be issued to students.

Qualifications and Requirements: The student must be a Japanese Language and Culture major and should have completed at least two years of Japanese language study at their home university.

Accommodations

Kumamoto University's International House, which is the dormitory for international students, is located about 1.5 km east of the Main Campus.

More than 100 international student and guest scholars reside there.

<Cost> Single room: 5,900 yen per month + water and electricity expenses

<Moving-in expenses> Single room: 24,000 yen for cleaning fee and room deposit

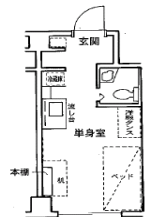
<Furnishings (in case of a single room)>

Sink, Shower and toilet, air conditioner, single bed, wardrobe, refrigerator, electric cooking device, desk, shoe storage space, telephone (for receiving calls only). Also, a set of futon, and sheets are available for lease. The cost is 9,000 yen per month.

Living in this dormitory has enabled students on the program to be able to concentrate on their studies.



International House (dorm)



For further information, please access the Kumamoto University website. Foreign students can view important information for them on the website by accessing the versions written in either English or Japanese.

Department in charge:

International Student Office, Kumamoto University

TEL: +81-96-342-2133, FAX: +81-96-342-2130

E-MAIL: gji-ryugaku@jim.kumamoto-u.ac.jp

HP <http://www.kumamoto-u.ac.jp/>

Course Descriptions

<Japanese Language & Japanese Studies>

Term	Class	Grade	Level	Description	
Fall and Spring	Lower-Intermediate General Japanese	1×2	3	Designed to develop the four language skills (i.e. listening, speaking, reading and writing) of lower-intermediate level students.	
	Lower-Intermediate Conversation	1	3	Designed to practice speaking Japanese using expressions appropriate for specific situations.	
	Lower-Intermediate Grammar	1	3	Designed to review basic grammar and develop the grammar skills of lower-intermediate level students.	
	Lower-Intermediate Reading	1	3	Designed to practice reading sentences written in simple Japanese.	
	Lower-Intermediate <i>Kanji</i>	1	3	Designed to practice reading and writing about 500 basic <i>Kanji</i> and learn vocabulary.	
	Intermediate General Japanese	1×3	3-4	Designed to develop the four language skills (i.e. listening, speaking, reading and writing) of intermediate-level students.	
	Presentation	1	3-6	Designed to practice making presentations, speaking and answering questions through the internet.	
	Pronunciation	1	3-6	Designed to study systematically the sounds of the Japanese language and improve Japanese pronunciation, rhythm, accent, and intonation.	
	Intermediate Grammar & Vocabulary	1	4	Designed to develop the vocabulary and grammatical skills of intermediate level students.	
	Intermediate Reading	1	4	Designed to practice reading sentences about science and technology, social issues and Japanese culture, etc.	
	Intermediate Composition	1	4	Designed to practice writing essays and summaries on general topics.	
	Intermediate <i>Kanji</i>	1	4	Designed to practice reading and writing about 1,000 <i>Kanji</i> and learn vocabulary.	
	Intermediate Conversation	1	4	Designed to improve one's speaking ability to an advanced level by practicing giving detailed explanations and descriptions of various situations.	
	Upper-Intermediate General Japanese	1×3	4-5	Designed to develop the four language skills (i.e. listening, speaking, reading and writing) of upper-intermediate level students.	
	Fall and Spring	Advanced Grammar & Vocabulary	1	4-5	Designed to develop the vocabulary and grammatical skills of advanced-level students.
		Advanced <i>Kanji</i>	1	5	Designed to practice reading and writing <i>Kanji</i> and learn vocabulary used in newspapers and the news.
Advanced Composition		1	5	Designed to practice writing practical sentences for use in everyday life, as well as reports and theses.	
Advanced Grammar		1	5	Designed to develop the vocabulary and grammatical skills of advanced-level students with an emphasis on <i>keigo</i> (honorific expressions) and complex sentences.	
Advanced Listening Comprehension & Vocabulary		1	5	Designed to improve the communicative skills of advanced-level students with special attention given to listening comprehension by using materials such as news programs.	
Advanced General Japanese		1	5	Designed to develop the four language skills (i.e. listening, speaking, reading and writing) of advanced-level students.	
Advanced Reading		1	6	Designed to practice reading various types of writing such as newspapers, (short) stories, critical essays, etc.	
Advanced Conversation		1	6	Designed to improve the speaking ability required for academic activities in Japanese universities.	
Science and Technology in Japan		2	5-6	This course is taught by several professors of the Faculty of Engineering. Field trips to factories are offered. Topics of lectures will include: leading-edge technology in Japan, architecture in Japan, machine technology, and environmental issues in Japan, etc.	
Culture and Society in Japan		2	5-6	This course is taught by several professors of the Faculty of Letters, Law and Education. Field trips to cultural facilities are offered. Topics of lectures will include: education in Japan, the way to modernization in Japan, law in Japan, Kumamoto folklore, Japanese dialects, politics in Japan, etc.	
Fall	Key Words and Expressions in Japanese Culture	2	1-6	This class introduce key words and expressions in Japanese culture. Students will learn how to use the words and expressions and gain insight into the cultural contexts in which they are used.	

〈Faculty of Letters〉

Term	Class	Grade	Description
Fall	Japanese Composition	2	Students will learn how to pick a topic, how to look for reference materials, several patterns of developing a thesis, and the basic rules for writing a report. Useful expressions when composing a paper will also be taught.
	Introduction to Japanese Folklore I	2	Various aspects of Japanese folklore will be explained, with a focus on Kunio Yanagida's historical research works, Japanese annual events, ethnic religion, lifetime employment, and transportation issues.
	Introduction to History of Thoughts I	2	Japanese modern historical thought from the Meiji Restoration up until Japan's loss in WWII will be outlined and students will acquire basic knowledge of it.
	Introduction to the Japanese Language II	2	Through each of the fields of phonemes, grammar, and vocabulary, the changes undergone in the history of the Japanese language will be outlined. Students will also acquire basic knowledge of the history of the Japanese language.
	Introduction to Japanese Literature II	2	Students will acquire a basic knowledge of classical literature.
	Seminar in Japanese Language Studies	2	Students will learn the basics of the linguistic analysis of historical literature texts through the use of classical Japanese literature.
	Seminar in Japanese Literature	2	Students will master the basics of how to examine and analyze Japanese literary texts through the use of "Sumiyoshi Monogatari."
	Introduction to Regional Sociology I	2	Students will discuss the structural nature of a modern Japanese society that has undergone a lot of changes after its period of rapid economic growth. The issues of depopulation of present-day rural areas and agriculture will also be touched on.
	Introduction to Japanese History I	2	The historical significance of major issues in Japan from ancient times up until the war period will be taught.
	Spring	Japanese Culture and Society	2

Spring	Reading in Japanese	2	Several Japanese novels, stories, and articles will be chosen and then read while focusing on writing style and vocabulary. Students will then use what they have learned to express their thoughts in Japanese.	
	Introduction to Regional Sociology II	2	Students will examine the background, causes of, and society's reaction to societal problems in Japan, a country which has undergone a lot of changes since WWII and after its era of rapid economic growth.	
	Introduction to Japanese History II	2	In the class, students will deepen their understanding of the foundation of Japanese society by tracing historical developments of Japanese society from contemporary history to modern times.	
	Introduction to the Japanese Language I	2	Students will acquire the basic skills needed when doing research on the Japanese language.	
	Introduction to Japanese Literature I	2	After selecting modern Japanese literature and organizing it by subject, the necessary methods and viewpoints when doing research regarding literature and culture will be examined.	
	Seminar in Regional Sciences IB	2	Folk magazines written as part of the results of field work will be read while considering the period they were written in and the methodology used.	
	Seminar in the Japanese Language	2	Students will learn the basics of the linguistic analysis of historical documents through the use of a book of old stories.	
	Seminar in Japanese Literature	2	Students will master the basics of how to examine and analyze Japanese literary works through the use of Japanese classic literature.	
	Full-year	Japanese History and Archaeology	4	Students will acquire basic skills on how to handle archaeological research material and also experience first-hand the work of making an excavation survey report.

〈Faculty of Education〉

Term	Class	Grade	Description
Fall	Introduction to the Japanese Language II	2	Grammar / Writing / Style
	Introduction to Japanese History	2	New viewpoints on Japanese historical research
	Introduction to Sociology	2	Basic theories of sociology
	Cross-cultural Understanding II	2	Understanding foreign cultures
	Introduction to the Teaching Profession	2	A teacher is someone who encompasses children and development course instruction, as well as guidance outside of class.
	Educational Sociology	2	Child development and the educational function of social groups such as families, peer groups and schools.
Spring	Introduction to the Japanese Language I	2	Phonetics/Phonemes/Vocabulary/Dialects
	Speech and Writing in Japanese I	2	Sentence comprehension, and sentence composition, and Speech.
	Selected Topics in Human Geography	2	Mapping practices in human geography
	Selected Topics in Sociology	2	Fundamental structure of Ye and Merat
	Cross-cultural Understanding I	2	Understanding foreign cultures
	Introduction to Education	2	What is education?/Hereditry and environment/What is progress?/The educational process/Textbooks
	History of Education I	2	The goal of the course is to shed light on the course modern Japanese education has taken and to touch on the various origins of current educational problems.
	School Administration	2	What is school administration?/The reality of child education and school administration/Rapid economic growth and school/local areas/The promotion of schools.

〈Faculty of Law〉

Term	Class	Grade	Description
Fall	Present-day Politics	2	Students will acquire a basic knowledge of Modern Politics.
	Analysis of Administrative Behavior	2	Students will acquire a basic knowledge of local administration in Japan.
	Mass Media Theory	2	Students will learn about decentralized journalism
Spring	Introduction to Law	2	What is law? The workings of Japan's legal system will be taught.
	Constitutional Law I	2	Students will learn about human rights in Japan.
	Constitutional Law II	2	Students will learn about the Japanese system of government.
	Political History	2	Students will learn about the history of democracy in Japan.



Kirishima Shrine (Kagoshima)

Field trip for international students



Kikuchi Valley (Kumamoto)